



[Manuals.plus](#) /

> [3T6B](#) /

> 3T6B Passive Keyless Entry & Engine Start System User Manual (Model: 8542115714)

3T6B 8542115714

3T6B Passive Keyless Entry & Engine Start System User Manual

Model: 8542115714

1. INTRODUCTION

This manual provides comprehensive instructions for the installation, operation, and maintenance of your 3T6B Passive Keyless Entry (PKE) and Engine Start System. Please read this manual thoroughly before installation and use to ensure proper functionality and safety. This system is designed for universal compatibility with 12V manual or automatic transmission vehicles.



Image 1.1: Overview of the 3T6B Passive Keyless Entry and Engine Start System components, including the main control unit, push start button, wiring harnesses, PKE antennas, and two smart key fobs.

2. PRODUCT FEATURES

- **Passive Keyless Entry (PKE):** Automatically locks the vehicle when the key fob is 3-5 meters away and unlocks when the key fob is within 1.5-3 meters.
- **Engine Start/Stop Button:** Allows for push-button engine ignition and shutdown.
- **Remote Engine Start:** Enables remote starting of the engine to pre-warm or pre-cool the vehicle.
- **Remote Trunk Release:** Opens the rear trunk remotely (if supported by vehicle).
- **Remote Car Search:** Assists in locating the vehicle in parking areas.
- **RFID Technology & Touch Password Entry:** Enhanced security features.
- **Compatibility:** Designed for 12V gasoline vehicles with manual or automatic transmissions.

3. SYSTEM COMPONENTS

The 3T6B PKE Engine Start System includes the following main components:

- Main Control Unit
- Push Start/Stop Button
- Two Smart Key Fobs (Transmitters)
- PKE Antennas (Front and Rear)
- Wiring Harnesses (Main, Ignition, Brake, etc.)
- Reset Switch
- Relay
- RFID Card (for some models/features)



Image 3.1: Detailed view of a smart key fob, highlighting the LED indicator, arm/lock/start button, trunk release, disarm button, and the location for a spare key blade.

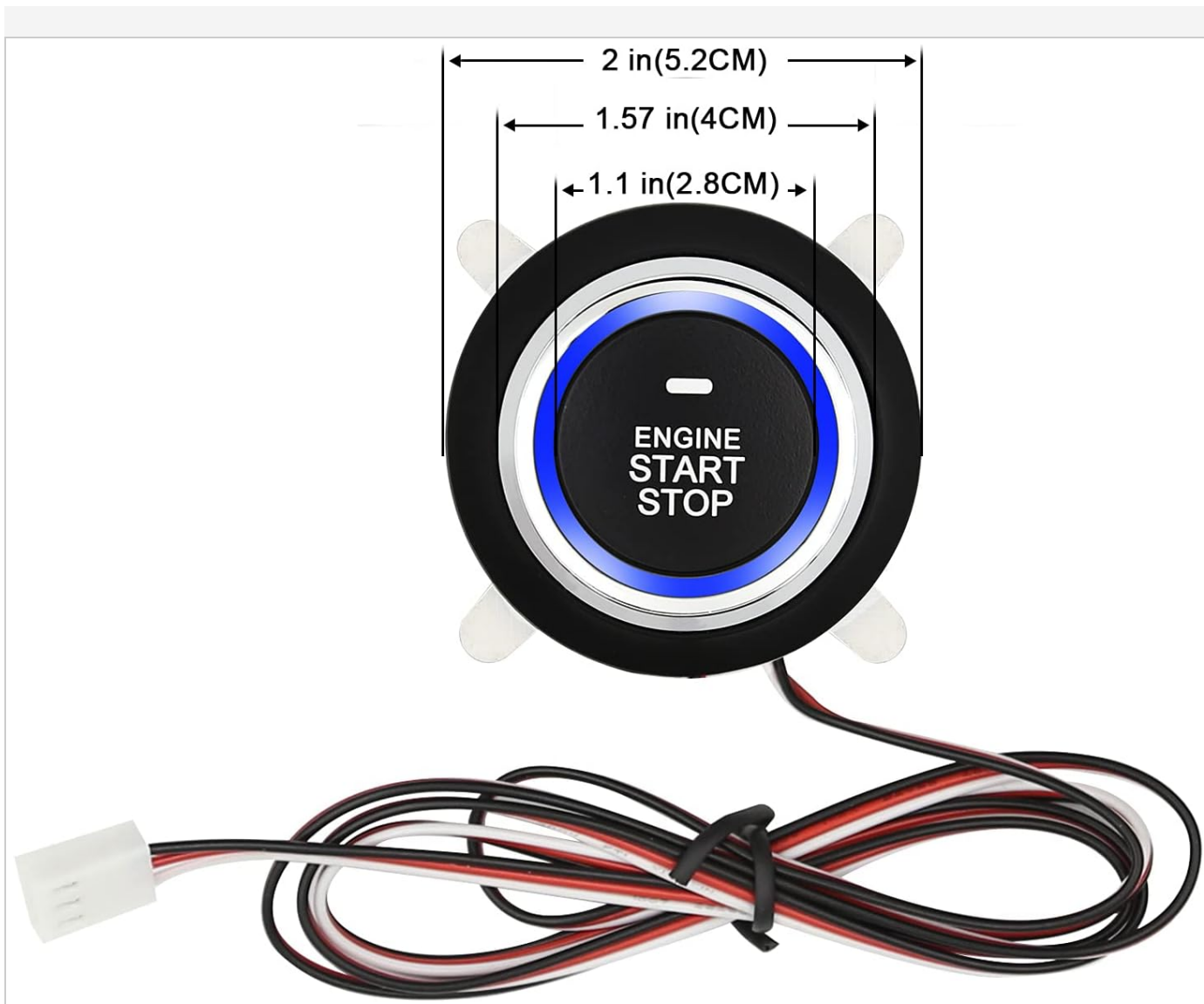


Image 3.2: Close-up of the engine start/stop button, showing its design with blue LED illumination and approximate dimensions (2 inches diameter, 1.57 inches inner diameter, 1.1 inches button diameter).

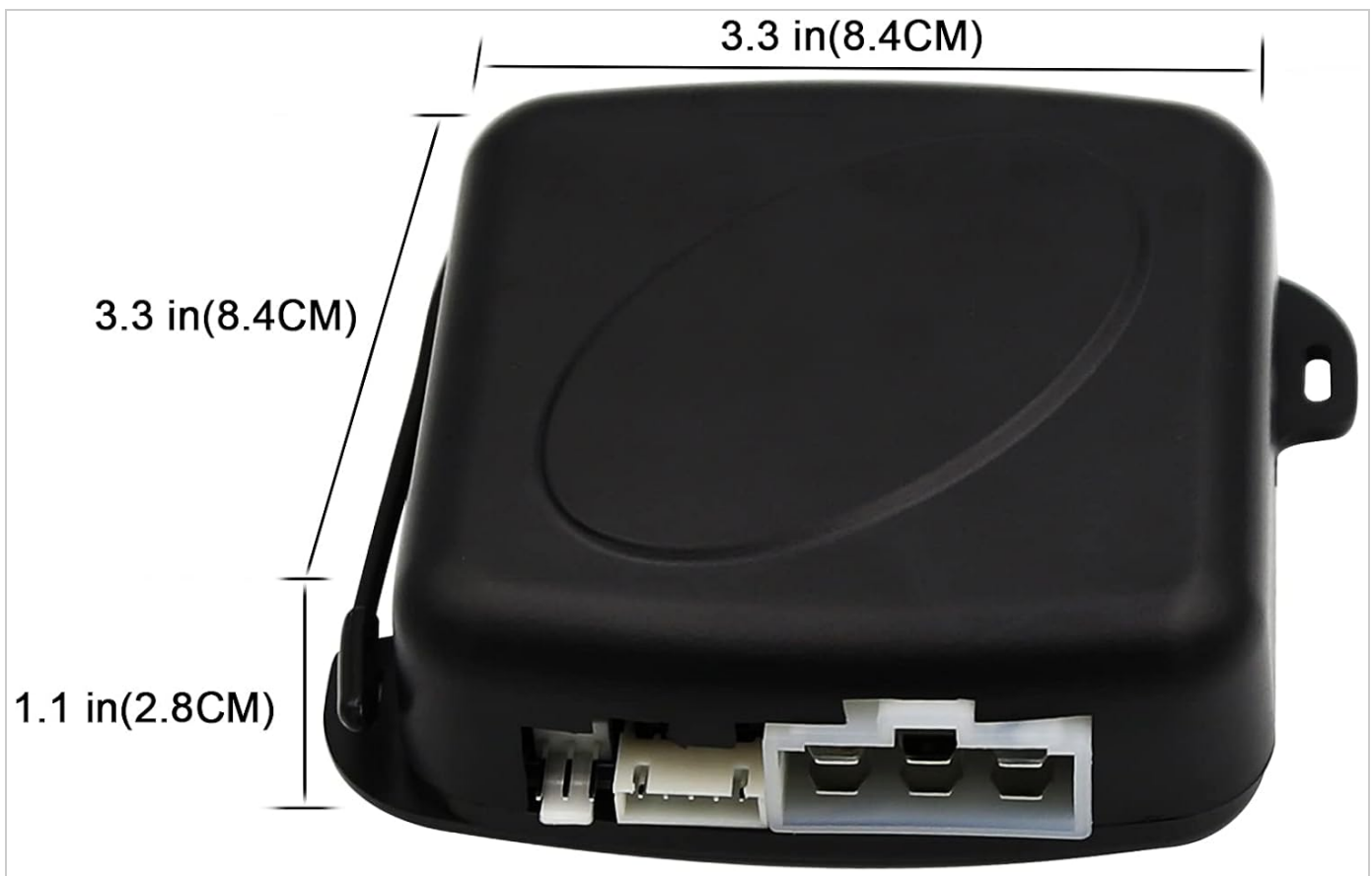


Image 3.3: Dimensions of the main control unit, measuring approximately 3.3 inches (8.4 cm) in length and width, and 1.1 inches (2.8 cm) in height.

4. SETUP AND INSTALLATION

Installation of this system requires a certain level of technical expertise. It is highly recommended to seek professional assistance for installation to ensure correct wiring and prevent damage to the vehicle or the system.

4.1 Wiring Connection Diagram

Refer to the detailed wiring diagram provided with your product for specific connections. General steps include:

1. Identify and connect the main power wires (B+ constant 12V, ACC, ON1, ON2, START).
2. Connect the central locking system wires (positive or negative trigger, may require relays).
3. Install the PKE antennas in designated front and rear locations for optimal range.
4. Connect the foot brake detection wire.
5. Connect the oil pump start detection wire (if applicable).
6. Install the push start button in a convenient location, typically replacing the ignition cylinder.
7. Integrate the immobilizer bypass module if your vehicle has a factory immobilizer.

KEYLESS ENTRY & PUSH START SYSTEM

WIRE CONNECTION DIAGRAM

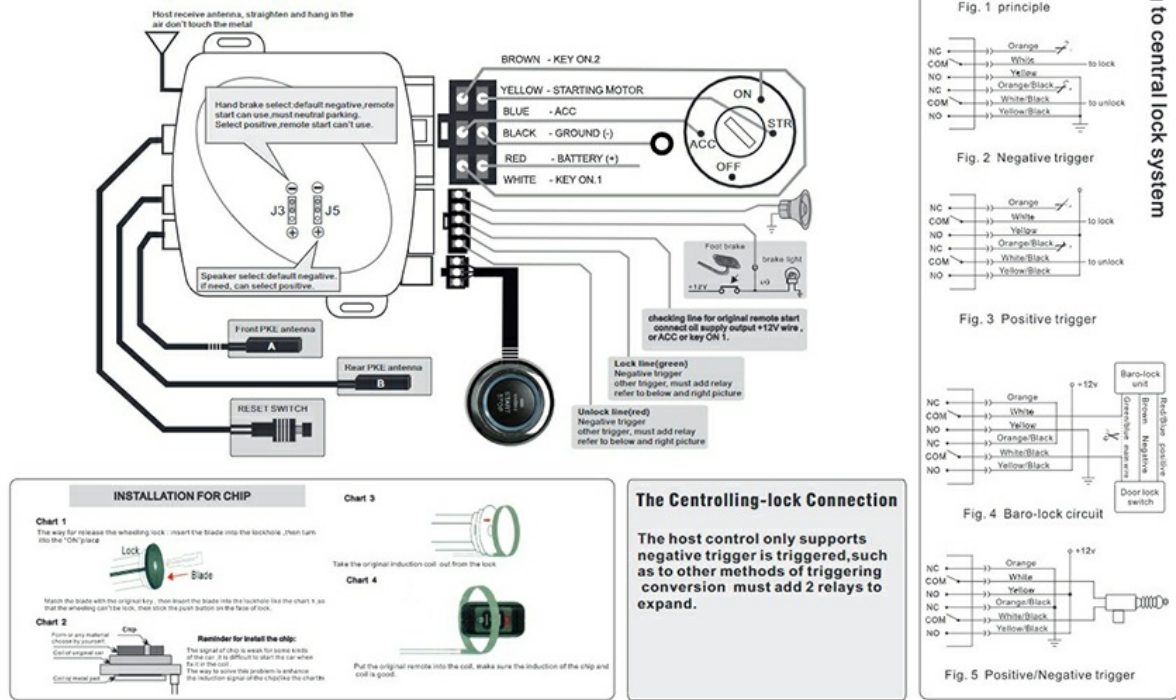


Image 4.1: Comprehensive wiring diagram illustrating the connections for the main control unit, push start button, PKE antennas, and integration with the vehicle's electrical system, including central locking and ignition circuits.

4.2 PKE Antenna Placement

Proper placement of the PKE antennas is crucial for reliable passive keyless entry functionality. Ensure they are not obstructed by metal components.

Your browser does not support the video tag.

Video 4.2: This video demonstrates the recommended installation locations for the PKE antennas within a vehicle, showing placement in the front and rear sections for optimal signal reception.

5. OPERATING INSTRUCTIONS

5.1 Passive Keyless Entry (PKE)

- **Automatic Unlock:** With the smart key fob in your hand or pocket, approach the vehicle. The doors will automatically unlock when you are within 1.5-3 meters.
- **Automatic Lock:** Walk away from the vehicle with the smart key fob. The doors will automatically lock when you are 3-5 meters away.

Your browser does not support the video tag.

Video 5.1: This video illustrates the Passive Keyless Entry (PKE) functionality, showing how the vehicle automatically locks and unlocks as the user approaches and walks away with the key fob.

5.2 Engine Start/Stop with Push Button

1. **To Power On Accessories (ACC):** Press the engine start/stop button once without pressing the foot brake.
2. **To Power On Ignition (ON):** Press the engine start/stop button a second time without pressing the foot brake.
3. **To Start Engine:** Press the foot brake and then press the engine start/stop button once.
4. **To Shut Down Engine:** Press the foot brake and then press the engine start/stop button once while the engine is

running.



Image 5.2: A hand demonstrating the use of the engine start/stop button located on the vehicle's dashboard.

Your browser does not support the video tag.

Video 5.3: This video demonstrates the push-button engine start and stop sequence, including accessory and ignition modes, and how to start the engine by pressing the brake and the button.

5.3 Remote Engine Start/Stop

- **To Remote Start:** Press and hold the remote start button (often the trunk release or a dedicated button) on the key fob for approximately 3 seconds. The vehicle's lights may flash, and the engine will start.
- **To Remote Stop:** Press and hold the same remote start button on the key fob for approximately 3 seconds while the engine is running remotely.

Your browser does not support the video tag.

Video 5.4: This video demonstrates the remote engine start and stop functions using the key fob, showing the sequence of button presses and the vehicle's response.

5.4 Touch Password Entry

In case the key fob is unavailable, the system supports touch password entry to unlock the vehicle. Refer to the installation guide for setting up your personal password.

Your browser does not support the video tag.

Video 5.5: This video demonstrates the touch password entry feature, allowing the user to unlock the vehicle by entering a code on a discreet keypad without the physical key fob.

6. MAINTENANCE

- **Key Fob Battery:** Replace the key fob battery when the signal range decreases or the LED indicator on the fob does not light up.
- **System Check:** Periodically check all connections and wiring for any signs of wear or damage.
- **Cleaning:** Keep the push start button and PKE antenna areas clean from dirt and debris.

7. TROUBLESHOOTING

Problem	Possible Cause	Solution
PKE not working / Reduced range	Low key fob battery, antenna obstruction, interference.	Replace key fob battery. Check antenna placement and ensure no metal obstructions. Avoid strong electromagnetic interference.

Problem	Possible Cause	Solution
Engine not starting with push button	Foot brake not pressed, incorrect wiring, immobilizer issue.	Ensure foot brake is firmly pressed. Verify all wiring connections. Check immobilizer bypass module.
Remote start not functioning	Out of range, low key fob battery, vehicle safety interlocks.	Ensure you are within range. Replace key fob battery. Check vehicle's parking brake status and door closure.
Battery drain	Incorrect installation, faulty component.	Consult a professional installer to check for parasitic draw and correct wiring.

8. SPECIFICATIONS

- **Brand:** 3T6B
- **Model Number:** 8542115714
- **Compatible Devices:** 12V manual cars or auto trans vehicle
- **Maximum PKE Range:** 3-5 meters (locking), 1.5-3 meters (unlocking)
- **Item Weight:** 1.08 pounds
- **Package Dimensions:** 6.85 x 5.98 x 2.52 inches

9. WARRANTY AND SUPPORT

For warranty information and technical support, please refer to the documentation included with your product or contact 3T6B customer service. Professional installation is recommended to ensure warranty validity and proper operation.

- **Protection Plans:** Optional 2-Year and 3-Year protection plans are available for purchase.