

PHILIPS BHH880

Philips BHH880 StyleCare Essential Heated Brush User Manual

Model: BHH880

1. INTRODUCTION

This manual provides essential instructions for the safe and effective use of your Philips BHH880 StyleCare Essential Heated Brush. Please read this manual thoroughly before first use and retain it for future reference.

2. IMPORTANT SAFETY INFORMATION

WARNING: Electrical appliances can pose hazards. Always follow basic safety precautions.

- Always unplug the heated brush after use.
- Keep the appliance away from heated surfaces to prevent overheating.
- Do not use this appliance near water, such as in bathtubs, showers, or basins.
- Ensure your hands are dry when plugging in or unplugging the appliance.
- This appliance operates at 230 volts. Verify compatibility with your local power supply before use. An appropriate voltage converter may be required in regions with different voltage standards (e.g., 110-120V in the US).
- Do not use the appliance if the cord or plug is damaged.
- Keep out of reach of children.

3. PRODUCT OVERVIEW

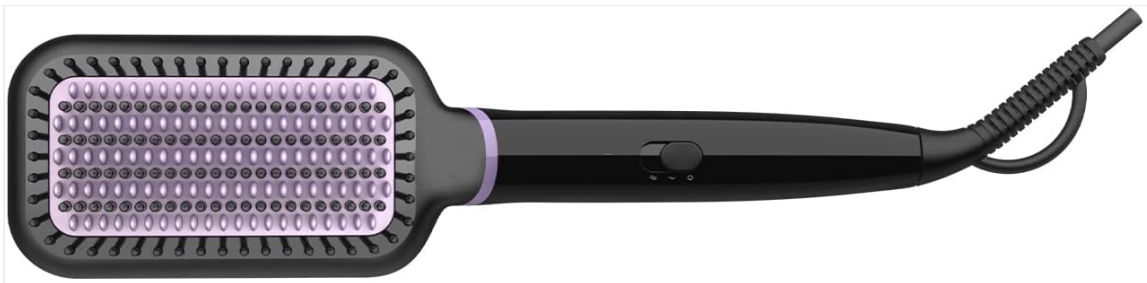
The Philips BHH880 StyleCare Essential Heated Brush is designed to help you achieve naturally straight, shiny hair. It features a tourmaline ceramic coating for smooth results and ThermoProtect technology for consistent temperature control.



The Philips BHH880 StyleCare Essential Heated Brush, shown alongside its retail packaging, highlighting its design and key features.

Key Features:

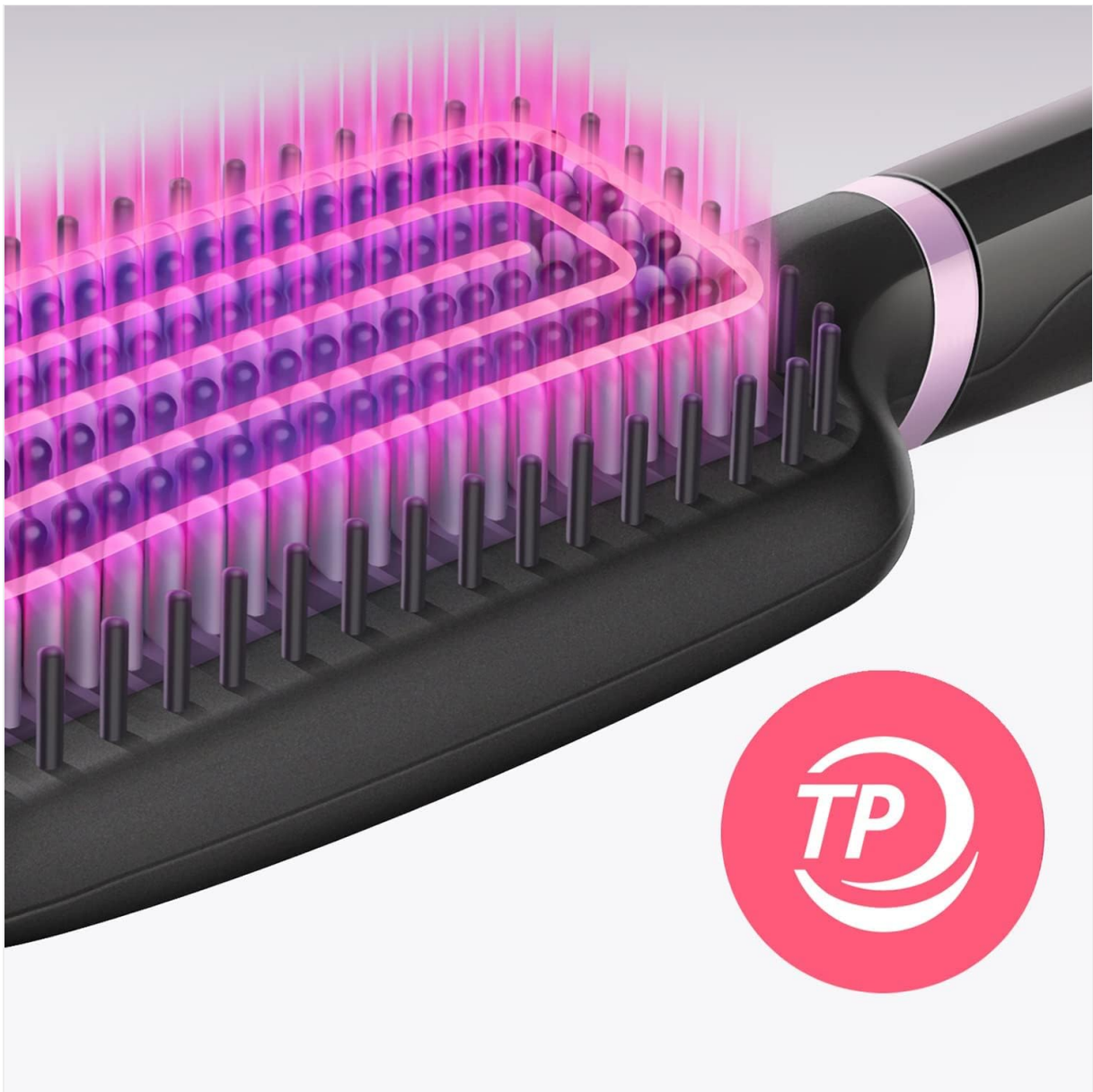
- **Tourmaline Ceramic Coating:** Ensures smooth gliding and shiny hair.
- **ThermoProtect Technology:** Maintains a constant temperature to prevent overheating and protect hair.
- **Wide Paddle-Shaped Brush Design:** Allows for straightening more hair in one pass.
- **Triple Bristle Design:** Gently detangles and smooths hair while protecting the scalp from heat.
- **Fast Heat-up:** Ready to use within 50 seconds.
- **Two Temperature Settings:** 170°C and 200°C to suit different hair types.
- **1.8m Cord:** Provides maximum flexibility and comfort during use.



A top-down view of the Philips BHH880 heated brush, showcasing the bristle arrangement and paddle design.



Detail of the brush head, illustrating the 60mm wide paddle design for efficient styling.



The brush head with an overlay indicating ThermoProtect technology, which maintains a constant temperature to prevent overheating.

4. SETUP

1. Unpack the Philips BHH880 StyleCare Essential Heated Brush and all its components.
2. Inspect the appliance for any visible damage. Do not use if damaged.
3. Ensure your hands are dry before handling the plug.
4. Plug the appliance into a suitable 230V power outlet.

5. OPERATING INSTRUCTIONS

Follow these steps for optimal use of your heated brush:

1. Ensure your hair is dry and detangled before use.
2. Plug in the heated brush.
3. Select one of the two temperature settings (170°C or 200°C) based on your hair type. The appliance will heat up in approximately 50 seconds.
4. Brush your hair slowly and evenly, ensuring the heated bristles pass through each section. For best results, work in small sections.

5. After use, unplug the heated brush from the power outlet.
6. Allow the appliance to cool down completely before storing.



The heated brush ready for use, with an icon indicating its rapid 50-second heat-up time.



The power cord of the heated brush, with an icon indicating its 1.8-meter length for flexible use.



A user demonstrating the application of the Philips BHH880 heated brush for hair straightening.



Detail of the swivel cord connection, designed to prevent tangling during use.

6. MAINTENANCE AND CLEANING

Regular cleaning ensures optimal performance and extends the life of your heated brush.

- Always ensure the appliance is unplugged and completely cool before cleaning.
- Wipe the exterior of the brush with a soft, damp cloth.
- Gently remove any hair or debris from the bristles using a small brush or your fingers.
- Do not use abrasive cleaners, solvents, or harsh chemicals.
- Do not immerse the appliance in water or any other liquid.

7. TROUBLESHOOTING

If you encounter issues with your Philips BHH880 heated brush, refer to the table below for common problems and solutions.

Problem	Possible Cause	Solution
Appliance does not turn on.	Not plugged in correctly, power outlet issue, or incorrect voltage.	Ensure the plug is fully inserted. Test the outlet with another appliance. Verify your power supply is 230V or use an appropriate voltage converter.

Problem	Possible Cause	Solution
Appliance is not heating up.	Temperature setting not selected, or internal fault.	Ensure a temperature setting (170°C or 200°C) is selected. If the problem persists, contact customer support.
Hair is not straightening effectively.	Hair is too wet, sections are too large, or brush is moved too quickly.	Ensure hair is completely dry. Work with smaller sections of hair. Move the brush slowly and evenly through the hair.

8. SPECIFICATIONS

Feature	Detail
Brand	PHILIPS
Model Number	BHH880/00
Product Dimensions	2.95 x 1.89 x 13.78 inches; 1.1 Pounds
Material	Ceramic
Power Source	Corded Electric
Voltage	230 Volts
Temperature Settings	2 (170°C, 200°C)
Heat-up Time	50 seconds
Cord Length	1.8 meters (6 feet)
Product Benefits	Straightening

9. WARRANTY AND SUPPORT

For warranty information, product registration, or technical support, please visit the official Philips website or contact Philips customer service in your region. Keep your proof of purchase for warranty claims.

You can find more information and support at: www.philips.com/beauty