

Manuals+

[Q & A](#) | [Deep Search](#) | [Upload](#)

manuals.plus /

› [MaxAuto](#) /

› [MaxAuto ATV Tires 19x7-8 Instruction Manual](#)

MaxAuto 19X7-8

MaxAuto ATV Tires 19x7-8 Instruction Manual

Model: 19X7-8

INTRODUCTION

Welcome to the MaxAuto ATV Tires 19x7-8 instruction manual. These tires are engineered for optimal performance on All-Terrain Vehicles (ATVs), Utility Terrain Vehicles (UTVs), and mini bikes, offering durability and traction across various terrains. This manual provides essential information for proper installation, usage, and maintenance to ensure safety and extend tire life.

PRODUCT FEATURES

- Pack of 2, 19x7-8 All-Terrain Tires.
- Set of 2 MaxAuto ATV Tires 19x7-8 (also known as 19x7x8) Mini Bike Tires with 4PR (4-Ply Rating).
- Features a 4-ply construction, load range B, 8 mm pattern depth, 5.5-inch rim width, and a load/speed rating of 235 lbs at 10 PSI (30J).
- Heavy 4-ply rated nylon construction provides resistance against punctures and abrasions.
- Designed to fit most ATV and Mini Bike models requiring a 19x7-8 tire size.

Tire Size: 19x7-8

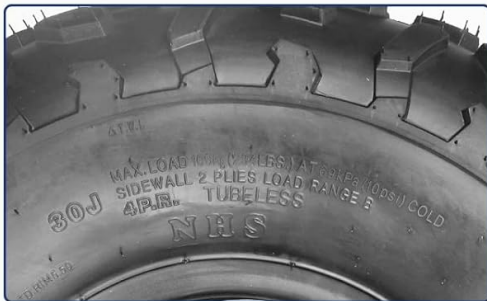


Image showing the MaxAuto ATV Tire 19x7-8, highlighting its robust tread pattern and sidewall markings.

TECHNICAL SPECIFICATIONS

Specification	Value
Brand	MaxAuto
Size	19x7-8
Section Width	7 Inches
Load Capacity	220 Pounds
Tread Depth	8 Millimeters
Tread Type	Non-Directional
Maximum Pressure	10 Pound per Square Inch
Rim Width	5.5 Inches

Specification	Value
Tire Diameter	19 Inches
Construction Type	Multi-Ply (4-Ply Rated)
Load Index	28
Speed Rating	J



Tire Specifications:

Size:	AT19x7-8
Rim Diameter(in):	8
Tire Load Range:	B
Load Index(lbs):	220
Speed Index:	J
Section Width(mm):	166
Rim Width(in):	5.5
Tread Depth(mm):	8
Max PSI:	10
TT/TL:	TL



Detailed specifications for the MaxAuto ATV Tire 19x7-8, including rim diameter, load index, speed index, and tread depth.

Suitable for desert, mud, dirt and rock

Maxauto ALL TERRAIN tires, On the Sand, On the Trail, On the Mud or on the Racetrack...



Diagram illustrating the dimensions of the 19x7-8 tire, showing height and width measurements.

UNIQUE TREAD PATTERN DESIGN

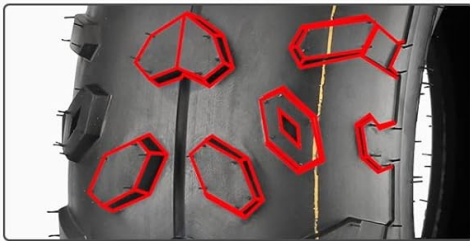
The MaxAuto ATV Tires feature a unique tread pattern designed for superior performance and traction across diverse terrains.

- **4-Ply Rated Construction:** Built with a heavy 4-ply nylon construction, these tires are highly resistant to punctures and abrasions, ensuring rugged durability in demanding environments.
- **Directional Tread Pattern:** The 8mm deep directional tread pattern is engineered to provide excellent grip, enhance handling, and maintain stable straight-line performance on various surfaces.



Unique Pattern Design

- 4 ply rated construction resists punctures and abrasions, rugged durability.
- Directional tread pattern with 8mm tread depth, ensure great grip, handling and the stability of stable straight.



Close-up view of the tire's unique directional tread pattern, emphasizing its design for grip and durability.

SETUP AND INSTALLATION

Proper tire installation is critical for both performance and safety. It is highly recommended that tire mounting and inflation be performed by a qualified professional using appropriate tools and safety procedures.

Pre-Installation Checks

- **Size Verification:** Confirm that the tire size (19x7-8) precisely matches the specifications required by your ATV, UTV, or mini bike.
- **Tire Inspection:** Thoroughly inspect each new tire for any signs of manufacturing defects, damage, or irregularities before attempting to mount it.
- **Rim Condition:** Ensure the wheel rim is clean, free from rust, corrosion, dents, or any other damage that could compromise tire seating or integrity.

Mounting Instructions (General Guidelines)

- **Lubrication:** Apply an approved tire mounting lubricant to both tire beads and the rim flanges.
- **Mounting:** Carefully mount the tire onto the rim. If the tire has a directional arrow on its sidewall, ensure

it points in the intended direction of forward rotation for your vehicle.

- **Inflation:** Inflate the tire slowly and carefully to the recommended operating pressure (10 PSI for this model), ensuring that both tire beads seat properly against the rim. Listen for two distinct pops as the beads seat.
- **Pressure Limit:** Never exceed the maximum inflation pressure indicated on the tire sidewall or your vehicle's manual. Over-inflation can lead to tire failure.

Your browser does not support the video tag.

An overview of MaxAuto's specialty tire manufacturing process and product range, highlighting quality and variety.

OPERATING GUIDELINES

These MaxAuto 19x7-8 ATV tires are specifically designed for off-road, all-terrain use. Adhering to these guidelines will help ensure safe operation and optimal tire performance.

- **Tire Pressure:** Always maintain the recommended tire pressure for your specific vehicle and load conditions. Refer to your vehicle's owner's manual for precise pressure recommendations. For these tires, the maximum recommended pressure is 10 PSI.
- **Load Capacity:** Do not exceed the tire's maximum load capacity of 235 lbs per tire. Overloading can lead to tire failure and unsafe operating conditions.
- **Driving Conditions:** Exercise caution when driving on uneven, rocky, muddy, or challenging terrain to prevent tire damage, punctures, or loss of control.
- **Post-Ride Inspection:** After each off-road excursion, conduct a thorough inspection of your tires for any cuts, punctures, foreign objects embedded in the tread, or excessive wear.

19x7-8

Tire and Wheel



Compilation of images showing ATVs and UTVs equipped with MaxAuto tires operating in various challenging environments like desert, mud, dirt, and rock.

MAINTENANCE

Regular maintenance is essential to maximize the lifespan and performance of your MaxAuto ATV Tires.

- **Tire Pressure:** Check tire pressure before every ride using an accurate gauge. Adjust to the recommended 10 PSI as needed. Incorrect pressure can lead to premature wear and reduced performance.
- **Cleaning:** Clean tires regularly to remove mud, dirt, and debris. This prevents buildup that can conceal damage and helps maintain the tire's appearance.
- **Inspection:** Periodically inspect the entire tire surface, including sidewalls and tread, for signs of damage such as cuts, cracks, bulges, or embedded foreign objects. Remove any sharp objects carefully.
- **Storage:** When storing your vehicle or tires for extended periods, keep them in a cool, dry place away from direct sunlight, extreme temperatures, and harsh chemicals (e.g., solvents, oils) that can degrade rubber.
- **Rotation:** Consider rotating your tires periodically to promote even wear across all four tires, especially if you observe uneven wear patterns. Consult your vehicle's manual for rotation recommendations.

TROUBLESHOOTING COMMON ISSUES

Here are some common issues you might encounter with your ATV tires and suggested troubleshooting steps.

Loss of Air Pressure

- **Cause:** Puncture from a sharp object, leaky valve stem, or improper bead seating.
- **Solution:** Inspect the tire tread and sidewalls for punctures. If a small puncture is found, it may be repairable. Check the valve stem for damage or looseness. If the tire bead is not properly seated, professional assistance is recommended for re-seating.

Uneven Tire Wear

- **Cause:** Incorrect tire pressure (under- or over-inflation), vehicle misalignment, or worn suspension components.
- **Solution:** Ensure tires are consistently inflated to the recommended pressure. Have your vehicle's alignment checked and adjusted by a professional. Inspect suspension components for wear and replace if necessary.

Vibration or Wobble

- **Cause:** Unbalanced tires, a bent or damaged rim, or loose lug nuts.
- **Solution:** Have your tires professionally balanced. Inspect rims for any visible damage and replace if bent. Ensure all lug nuts are tightened to the vehicle manufacturer's specified torque.

WARRANTY AND SUPPORT

MaxAuto tires are manufactured under strict quality control standards to ensure reliability and performance. For specific warranty details, to initiate a warranty claim, or for any technical support inquiries, please refer to the official MaxAuto website or contact their customer service directly.

Manufacturer: PartsSquare

Product ASIN: B07FR44CG8

Date First Available: July 20, 2018

Your browser does not support the video tag.

A dynamic video showcasing MaxAuto ATV and UTV tires in action across various challenging terrains, demonstrating their durability and performance.

Your browser does not support the video tag.

A short video explaining how to interpret product listings for tire quantities, using examples of single, 2-pack, and 4-pack options.