

**GENBOLT GB213V**

# GENBOLT 4K WiFi Security Camera Outdoor User Manual

Model: GB213V

## 1. INTRODUCTION

---

Thank you for choosing the GENBOLT 4K WiFi Security Camera Outdoor. This manual provides detailed instructions for the installation, operation, and maintenance of your new security camera. Designed for outdoor use, this camera offers advanced features such as 4K UHD resolution, color night vision, intelligent human and vehicle detection, auto-tracking, and dual-band Wi-Fi connectivity to ensure comprehensive surveillance of your property.

## 2. PACKAGE CONTENTS

---

Please verify that all items listed below are included in your package:

- GENBOLT 4K WiFi Security Camera
- User Manual
- Network Cable
- Power Adapter
- Waterproof Kit
- Mounting Screws



Image: Contents of the GENBOLT 4K WiFi Security Camera package, including the camera, user manual, network cable, power adapter, waterproof kit, and mounting screws.

### 3. SETUP AND INSTALLATION

#### 3.1 Mounting the Camera

The GENBOLT camera is designed for wall mounting. Choose a location that provides optimal viewing coverage and is within range of your Wi-Fi network or Ethernet connection. Ensure the mounting surface is sturdy enough to support the camera.



Image: The GENBOLT 4K WiFi Security Camera shown mounted on an exterior wall, illustrating its typical installation position.

### 3.2 Power and Network Connection

The camera supports both DC power and Power over Ethernet (PoE) for flexible installation. PoE allows the camera to receive both power and data over a single Ethernet cable, simplifying wiring.

- **DC Power:** Connect the included power adapter to the camera's power input and plug it into a suitable power outlet.
- **PoE:** If using PoE, connect an Ethernet cable from a PoE-enabled switch or injector to the camera's PoE

port.



Image: An illustration demonstrating the dual power options for the camera: direct DC power connection and Power over Ethernet (PoE) via a network switch.

### 3.3 Wi-Fi Connectivity

The camera supports both 2.4GHz and 5GHz Wi-Fi bands, providing a stable and high-speed wireless connection. For initial setup, it is recommended to connect the camera to a wired connection to ensure stable recognition by the app before configuring Wi-Fi.

# 2.4/5GHz Dual-Band Wi-Fi



Image: A visual representation of the camera's dual-band Wi-Fi capability, showing both 2.4GHz for farther transmission and 5GHz for speedy, powerful network connection.

## 3.4 App Installation and Setup

Download the official GENBOLT Cam app from your smartphone's app store (available for iOS and Android). Follow the in-app instructions to add your camera. Once the camera is recognized, you can configure Wi-Fi settings and access live view and recordings.



Image: A smartphone displaying a QR code for sharing camera access, indicating multi-user sharing capabilities within the GENBOLT app.

## 4. OPERATING INSTRUCTIONS

### 4.1 Video Resolution and Night Vision

The camera provides 8MP UHD resolution, allowing for clear and detailed 4K images. It features 12 floodlights for enhanced visibility and offers up to 40 meters (150 feet) of color night vision, ensuring clear footage even in low-light conditions.

# 8MP Day&Color Night

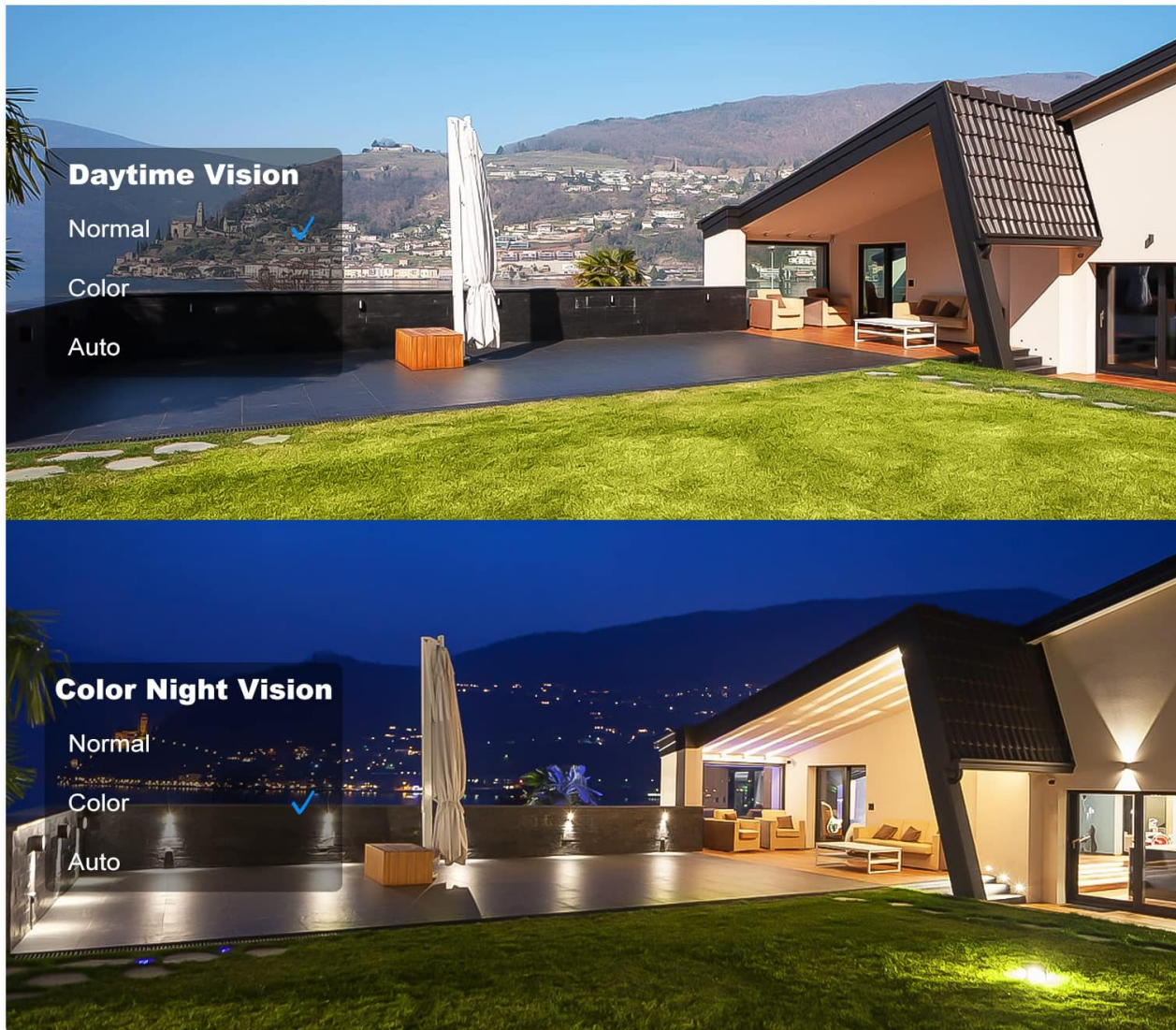


Image: A split image demonstrating the camera's 8MP resolution in both daytime vision and color night vision modes, highlighting the clarity in different lighting conditions.

## 4.2 Pan, Tilt, and Digital Zoom (PTZ)

Control the camera's viewing angle remotely through the app. It offers 355° horizontal pan and 90° vertical tilt, covering a wide area without blind spots. The 4x digital zoom allows you to magnify details in the live feed or recordings.

# 355° Pan 90° Tilt

4K cover every corner, no blind spots

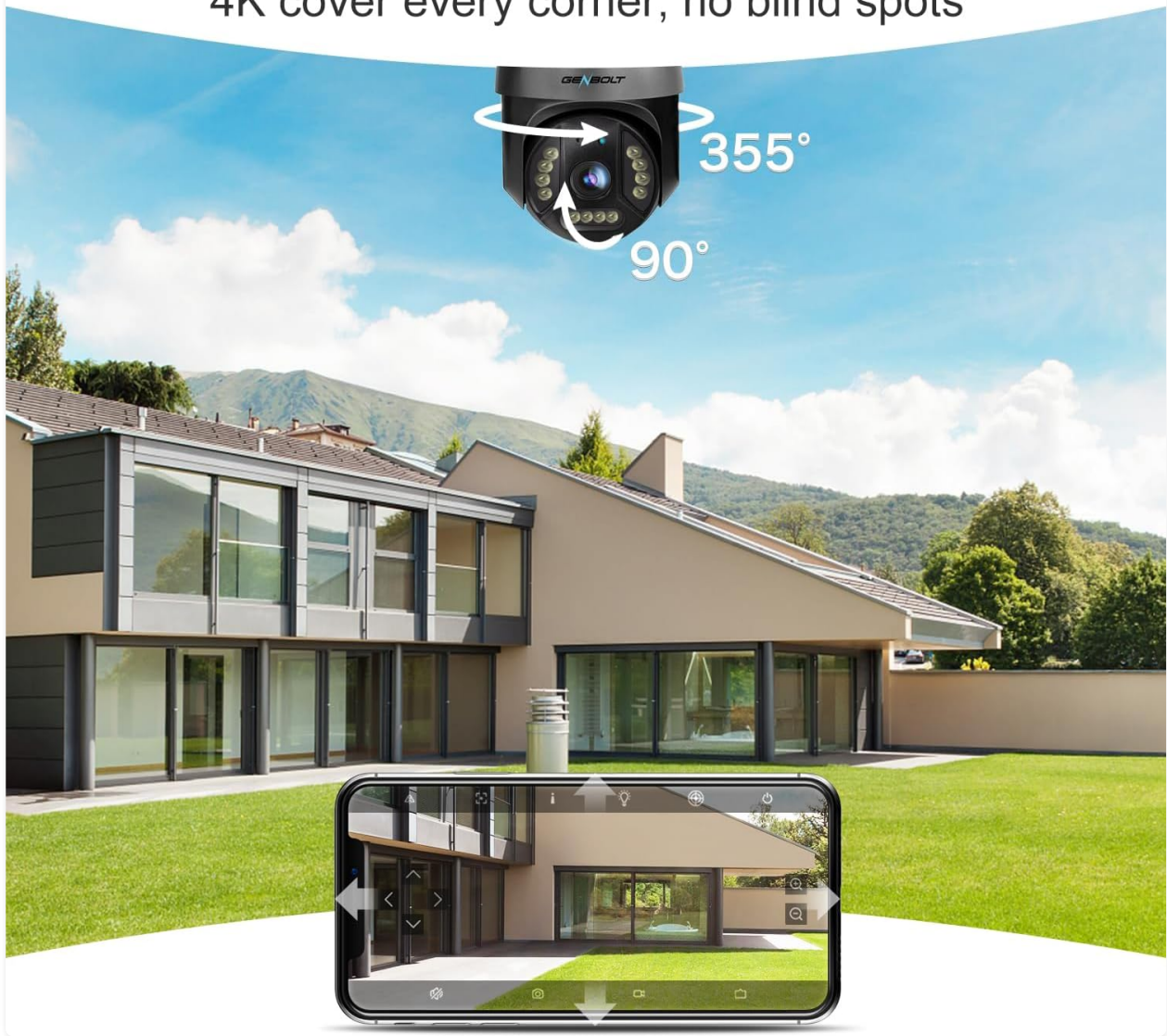


Image: An illustration depicting the camera's 355-degree pan and 90-degree tilt functionality, showcasing its ability to cover a wide area.

## 4.3 Humanoid and Vehicle Detection

The camera features intelligent detection capabilities that distinguish between human and vehicle motion, reducing false alarms. You can set specific detection zones (1-4) to focus on critical areas and receive accurate real-time alerts.



# Human/Vehicle Detection

Only important motion events will trigger alerts



Image: A scene showing a human and a vehicle with highlighted detection boxes, indicating the camera's ability to identify and differentiate between them.

## 4.4 Auto Tracking and Auto Cruise

When motion is detected, the camera can automatically track the moving person, ensuring they remain in view. You can also set up an auto-cruise mode with pre-defined points, allowing the camera to automatically patrol specific locations.

# Auto Tracking

The camera will follow the moving person  
never miss anything important



Image: A person and a dog walking, with the camera's auto-tracking feature indicated by a moving frame around the subjects.

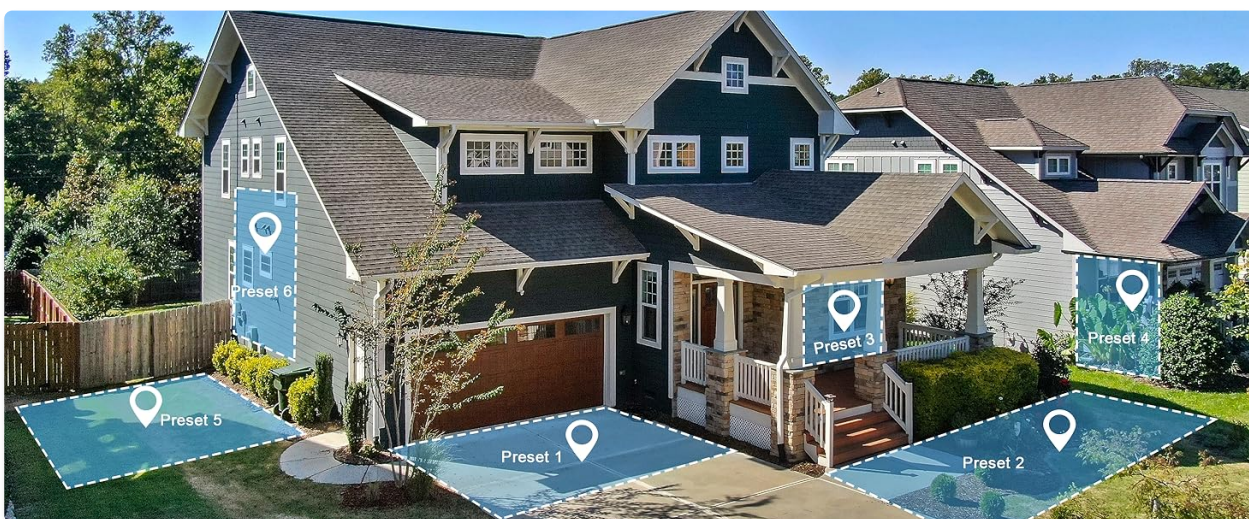


Image: An aerial view of a house with multiple numbered

