

Manuals+

[Q & A](#) | [Deep Search](#) | [Upload](#)

[manuals.plus](#) /

› [AC Infinity](#) /

› [AC Infinity CLOUDLINE PRO S6 Inline Duct Fan User Manual](#)

AC Infinity CLOUDLINE S6

AC Infinity CLOUDLINE PRO S6 Inline Duct Fan User Manual

Model: CLOUDLINE S6

Brand: AC Infinity

PRODUCT OVERVIEW

The AC Infinity CLOUDLINE PRO S6 is a quiet 6-inch inline duct fan designed for efficient ventilation in various environments. It features an EC motor for quiet and energy-efficient performance and comes with a wired 10-speed fan controller. This fan is ideal for ventilating grow tents, transferring heating/cooling, circulating air, exhausting odors, and cooling AV racks.



Image: The AC Infinity CLOUDLINE PRO S6 inline duct fan shown with its wired speed controller.

- Designed to ventilate grow tents, transfer heating/cooling to rooms, circulate air, exhaust odors, and cool AV racks.
- Features a wired 10-speed fan controller; also compatible with all UIS controllers with intelligent programming.
- PWM-controlled EC motor provides quiet and energy-efficient performance with minimal heat and noise.
- Mixed flow design with stator blade and hydrodynamic wind circles enables airflow delivery in high resistance areas.
- Duct Size: 6" | Dimensions: 7.9 x 12.6 x 8.4 in. | Airflow: 402 CFM | Noise: 32 dBA | Bearings: Dual Ball.

SETUP

Proper setup ensures optimal performance and longevity of your CLOUDLINE PRO S6 fan. Follow these general guidelines for installation.

Unboxing and Inspection

Carefully remove all components from the packaging. Inspect the fan, controller, and accessories for any signs of damage during transit. Retain packaging for future storage or transport.

Mounting the Fan

The fan can be mounted in various orientations depending on your ventilation needs. Use the included mounting bracket to secure the fan to a stable surface, such as a ceiling joist or wall. Ensure the mounting location can support the weight of the fan and any connected ducting.



Image: An example of the CLOUDLINE PRO S6 fan installed within a grow tent setup, showing ducting connections.

Ducting Connection

Connect appropriate 6-inch ducting to both ends of the fan. Use duct clamps to ensure a secure and airtight connection. For optimal performance, minimize bends and kinks in the ducting.



Image: Diagram illustrating the components of a duct fan system, including the fan and a carbon filter (filter not included).

Controller Placement

The wired speed controller comes with a long cable (8 feet for power, 10 feet for fan to controller) allowing flexible placement. Mount the controller in an easily accessible location using the provided mounting screws.

OPERATING INSTRUCTIONS

The CLOUDLINE PRO S6 fan is operated using its wired 10-speed controller. This controller allows precise adjustment of fan speed to meet your ventilation requirements.

Using the Speed Controller

Plug the fan into the controller, and then plug the controller into a standard power outlet. The controller features a single button to cycle through 10 fan speeds. Press the button to increase the speed. To turn the fan off, hold the button for four seconds. The controller has a backup memory that remembers the last speed setting even after power cycles.

SPEED CONTROLLER



Ten fan speeds with power switch, controlled by PWM (Pulse Width Modulation).

Backup memory remembers speed settings even with power off and on cycles.

Includes machine and wood mounting screws to secure controller onto a wall.

Image: Detailed view of the wired speed controller, highlighting its single button operation and LED indicators for speed settings.

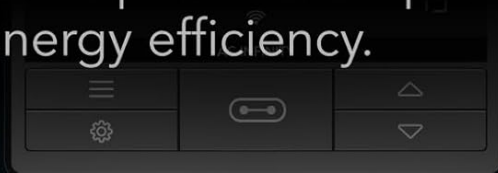
UIS Controller Compatibility (Optional)

The CLOUDLINE PRO S6 is compatible with AC Infinity's Universal Intelligent System (UIS) controllers. These smart controllers offer advanced programming features, including temperature and humidity triggers, timers, and app control for precise environmental management. Refer to your UIS controller's manual for detailed setup and operation instructions.

LARGEST GROW ECOSYSTEM



Connect this device to a UIS™ controller, mixing and matching up to 32 smart grow devices that can control their output in exact percentages for precision and energy efficiency.



TERRAFORM Series
Air Conditioning Units



CLOUDFORGE Series
Plant Humidifiers



THERMOFORGE Series
Plant Heaters



IONFRAME Series
Commercial Grow Lights



IONBEAM Series
Supplement Grow Lights



IONBOARD Series
LED Light Boards



CLOUDLINE Series
Inline Exhaust Fans



CLOUDLIFT Series
Floor Wall Fans



CLOUDRAY Series
Clip-on Fans



AIRBLAZE Series
Circulation Blower



AIRLIFT Series
Shutter Exhaust Fans



AIRTITAN Series
Room Exhaust Fans



with



UIS Lighting Adapters
Control Other Brands' Lights



with



UIS Control Plug
Control Outlet Devices

*Devices shown sold separately

Image: Diagram illustrating how the CLOUDLINE PRO S6 integrates into the larger AC Infinity UIS ecosystem with various smart grow devices.

MAINTENANCE

Regular maintenance helps ensure the efficient and long-lasting operation of your AC Infinity CLOUDLINE PRO S6 fan.

Cleaning the Fan

Periodically inspect the fan blades and housing for dust and debris buildup. Disconnect the fan from power before cleaning. Use a soft, dry cloth or a vacuum cleaner with a brush attachment to gently remove any accumulated dust. Do not use liquid cleaners directly on the fan motor or electrical components.

Checking Connections

Ensure all ducting connections are secure and free of leaks. Check the power cable and controller cable for any signs of wear or damage. Replace any damaged components immediately.

TROUBLESHOOTING

If you encounter issues with your CLOUDLINE PRO S6 fan, refer to the following common troubleshooting steps:

- **Fan Not Turning On:**
 - Ensure the power cord is securely plugged into a working electrical outlet.
 - Verify that the controller cable is properly connected to the fan.
 - Check if the power button on the controller has been pressed to activate the fan.
- **Low Airflow:**
 - Check for obstructions in the ducting or fan blades.
 - Ensure ducting is properly sealed and free of leaks.
 - Increase the fan speed using the controller.
 - Verify that the fan is installed in the correct direction for airflow.
- **Unusual Noise:**
 - Inspect the fan for any loose components or debris.
 - Ensure the fan is securely mounted and not vibrating against surfaces.
 - Check ducting for any loose connections or tears that could cause whistling.

If problems persist after attempting these steps, please contact AC Infinity customer support for further assistance.

SPECIFICATIONS

| Attribute | Value |
|------------------------|--|
| Brand | AC Infinity |
| Model Name | CLOUDLINE S6 |
| Duct Size | 6-Inch |
| Product Dimensions | 7.9"D x 8.4"W x 12.6"H |
| Airflow Capacity | 402 Cubic Feet Per Minute (CFM) |
| Noise Level | 32 dB |
| Wattage | 38 watts |
| Voltage | 240 Volts |
| Control Method | Wired Speed Controller (App compatible with UIS controllers) |
| Number of Power Levels | 10 |
| Included Components | Cord, Remote |
| Item Weight | 0.01 Ounces |
| Certification | CE, ETL, RoHS |

SPECIFICATIONS

UIS™

MODEL | CLOUDLINE S6
DUCT SIZE | Ø 6"
POWER USAGE | 38 Watt
CONTROLLER | Speed Controller

ENGINE | EC-Motor PWM
AIRFLOW | 402 CFM
NOISE | 32 dBA
SPEED | 10 + Power Switch



8.35"
(21.2 cm)

12.60" (32.0 cm)

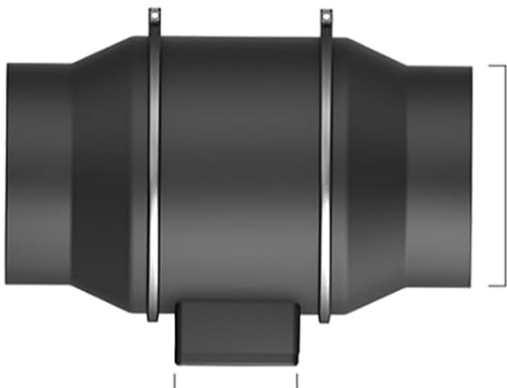


2.70"
(6.9 cm)

1.37" (3.5 cm)



0.55"
(1.4 cm)



5.79"
(14.7 cm)

3.31" (8.4 cm)

Power Cord
Length:



8 FT
(96")
(244 cm)

Fan to Controller
Cord Length:



10 FT
(120")
(305 cm)

Image: Visual representation of the CLOUDLINE S6 fan and controller dimensions, along with key specifications.

WARRANTY AND SUPPORT

AC Infinity products are designed for reliability and performance. For specific warranty information, please refer to the documentation included with your product or visit the official AC Infinity website.

For additional support, troubleshooting, or to download the full user manual in PDF format, please visit the AC Infinity support page or refer to the provided link:

[Download User Manual \(PDF\)](#)



| | |
|---|--|
|  | <p>AC INFINITY CLOUDLINE A/B Mixed Flow Inline Fan Systems User Manual</p> <p>Comprehensive user manual for AC INFINITY CLOUDLINE A/B Mixed Flow Inline Fan Systems. Covers key features, installation, programming, and FAQs for optimal ventilation in grow tents and similar environments.</p> |
|  | <p>AC Infinity CLOUDLINE Mixed Flow Inline Fan Systems User Manual</p> <p>User manual for AC Infinity CLOUDLINE mixed flow inline fan systems, detailing installation, setup, programming, app control, and maintenance for models like CLOUDLINE S4, S6, S8, S10, S12, T4, T6, T8, T10, T12.</p> |
|  | <p>AC Infinity CLOUDLINE Air Filtration System User Manual Installation, Features, and FAQ</p> <p>Comprehensive user manual for the AC Infinity CLOUDLINE Air Filtration System. Learn about key features, installation guides (hanging, mounting, filter & ducting), powering, controller upgrades, cleaning, programming, troubleshooting (FAQ), warranty, and other AC Infinity products.</p> |
|  | <p>AC Infinity CLOUDLINE Mixed Flow Inline Fan Systems User Manual</p> <p>Comprehensive user manual for AC Infinity CLOUDLINE mixed flow inline fan systems, detailing installation, setup, operation, and features for S-Series and T-Series models. Learn about smart controls, quiet motors, and IP-44 protection.</p> |
|  | <p>AC Infinity CLOUDLINE Mixed Flow Inline Fan Systems User Manual</p> <p>Comprehensive user manual for AC Infinity CLOUDLINE mixed flow inline fan systems, covering installation, setup, programming, maintenance, and troubleshooting for models like S4, S6, S8, S10, S12, T4, T6, T8, T10, T12.</p> |
|  | <p>AC Infinity RAXIAL Inline Booster Fan User Manual - Installation, Features, and Warranty</p> <p>Comprehensive user manual for the AC Infinity RAXIAL Inline Booster Fan (Models S4, S6, S8). Learn about key features, installation steps, programming, product contents, and warranty information.</p> |