

Manuals+

[Q & A](#) | [Deep Search](#) | [Upload](#)

manuals.plus /

- > [Epson](#) /
- > [Epson Expression Premium XP-7100 Wireless Color Photo Printer User Manual](#)

Epson XP-7100 (C11CH03201)

Epson Expression Premium XP-7100 Wireless Color Photo Printer User Manual

Model: XP-7100 (C11CH03201) | Brand: Epson

[Box](#) [Setup](#) [Features](#) [Operation](#) [Introduction](#) [What's in the](#)
[Maintenance](#) [Troubleshooting](#) [Specifications](#) [Warranty](#)
[& Support](#)

1. INTRODUCTION

The Epson Expression Premium XP-7100 is a wireless Small-in-One printer designed for superior photo quality and versatile functionality. It integrates printing, copying, and scanning capabilities, making it suitable for various home and office tasks. This manual provides essential information for setting up, operating, maintaining, and troubleshooting your device.



Image: The Epson Expression Premium XP-7100 printer, showcasing its compact design and a vibrant photo being printed from the front tray.

2. WHAT'S IN THE BOX

Upon unpacking your Epson Expression Premium XP-7100, verify that all the following items are included:

- Expression Premium XP-7100 color inkjet printer
- Setup and instruction manuals
- CD-ROM containing software and drivers (for Windows and Mac operating systems)
- Power cord
- 5 Claria Premium ink cartridges: 1x 410 Black ink cartridge, 3x 410 color ink cartridges (Cyan, Magenta, Yellow), 1x 410 Photo Black ink cartridge

In the box



Expression® Premium XP-7100 Small-in-One® Printer

SD card sold separately.

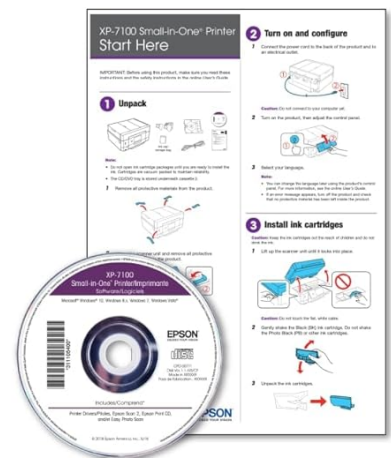


410 Series Genuine Epson® ink cartridges

*Printer designed for use exclusively with
Epson® ink cartridges*.*



Power cord USB cable not included



CD and documentation

***SCROLL DOWN TO "FROM THE MANUFACTURER" TO LEARN MORE.**

Image: A visual representation of the items typically found inside the product packaging, including the printer, ink, power cord, and setup guides.

3. INITIAL SETUP

Follow these steps to set up your printer for the first time:

- 1. Unpack the Printer:** Carefully remove the printer from its packaging. Remove all protective tapes and materials from the exterior and interior of the printer.
- 2. Connect Power:** Plug the power cord into the printer and then into a wall outlet. Turn on the printer using the power button.
- 3. Install Ink Cartridges:** Open the ink cartridge cover and install the 5 Claria Premium ink cartridges into their corresponding slots. Ensure they click into place. The printer will then begin an initial charging cycle.
- 4. Load Paper:** Load plain paper into the main paper tray. For photo printing, use the specialty paper feed or photo paper tray.
- 5. Install Software:** Insert the provided CD-ROM into your computer's drive and follow the on-screen instructions

to install the printer software and drivers. Alternatively, download the latest software from the official Epson support website.

6. **Connect to Network:** Follow the on-screen prompts on the printer's 4.3-inch touchscreen to connect the printer to your wireless network. You may need your Wi-Fi network name (SSID) and password.



Image: The printer with paper loaded in both the rear specialty media feed and the front paper tray, ready for printing.

4. KEY FEATURES

The Epson Expression Premium XP-7100 offers a range of features designed for efficiency and high-quality output:

- **Superior Photo Quality:** Utilizes 5-color Claria Premium Inks for vivid, borderless photos up to 8" x 10" and sharp text documents.
- **Wireless Connectivity:** Supports Wi-Fi and Wi-Fi Direct for printing from various devices without a router.
- **Automatic Document Feeder (ADF):** A 30-page ADF for efficient multi-page copying, scanning, and faxing.
- **Auto 2-sided Printing, Copying, and Scanning:** Reduces paper consumption and saves time.
- **Intuitive Touchscreen:** A 4.3-inch color touchscreen for easy navigation, viewing, editing, and printing photos directly from USB or SD card slots.
- **Multiple Media Feeds:** Includes a dedicated specialty paper feed for printing on various paper types and DVDs.
- **Creative Print App:** Enables printing of custom projects from compatible smartphones or tablets.

At a glance

Main features



Wireless



Print



Copy



Scan



Photo



Ethernet

Additional features

- ✓ Superior photo quality
- ✓ 30-pg. ADF; specialty media feed*
- ✓ Auto 2-sided print/copy/scan
- ✓ Print borderless up to 8" x 10"
- ✓ 4.3" touchscreen; USB/card slots*
- ✓ Wireless and Wi-Fi Direct®*
- ✓ Smartphone/tablet printing*
- ✓ 4" x 6" photo as fast as 12 sec*
- ✓ 5-color Claria® inks
- ✓ Creative Print App



XP-7100

Ink cartridges



410 Series Genuine Epson® Ink cartridges

Printer designed for use exclusively with Epson ink cartridges.*

SD card sold separately.

***SCROLL DOWN TO "FROM THE MANUFACTURER" TO LEARN MORE.**

Image: An overview of the printer's main and additional features, including its wireless capabilities, photo quality, and automatic functions.

5. OPERATING INSTRUCTIONS

5.1 Printing

To print documents or photos:

- Ensure the printer is powered on and connected to your device (via Wi-Fi or USB).
- Load the appropriate paper type and size into the paper tray or specialty feed.
- From your computer or mobile device, open the document or photo you wish to print.
- Select 'Print' from the application's menu. Adjust print settings such as paper size, type, quality, and duplex options as needed.
- Click 'Print'. The motorized output tray will extend automatically.



Image: A user examining printed photos, with the Epson XP-7100 printer visible in the background, demonstrating its use in a home setting.

5.2 Copying

To make copies:

- Place your original document face-down on the scanner glass or face-up in the Automatic Document Feeder (ADF).
- On the printer's touchscreen, select 'Copy'.
- Adjust settings such as number of copies, color/black & white, paper size, and 2-sided options.
- Press the 'Start' button on the touchscreen.

5.3 Scanning

To scan documents or photos:

- Place your original document face-down on the scanner glass or face-up in the ADF.
- On the printer's touchscreen, select 'Scan'.

- Choose your scan destination (e.g., computer, cloud service, USB drive) and adjust scan settings (e.g., resolution, file type).
- Press the 'Start' button on the touchscreen.



Image: The Epson XP-7100 printer with its automatic output tray extended, ready to receive printed documents.

6. MAINTENANCE

6.1 Replacing Ink Cartridges

When an ink cartridge is low or empty, a message will appear on the printer's touchscreen. To replace a cartridge:

1. Ensure the printer is on. Lift the scanner unit.
2. Press the tab on the empty cartridge and lift it straight out.
3. Unpack a new Epson 410 series Claria Premium ink cartridge. Shake it gently before opening.
4. Insert the new cartridge into the correct slot until it clicks into place.
5. Close the scanner unit. The printer will begin charging the ink.

Note: Use only genuine Epson brand cartridges. Other brands of ink cartridges and ink supplies are not compatible and may not function properly or at all.

6.2 Cleaning the Printer

Regular cleaning helps maintain print quality and prolong the life of your printer:

- **Exterior:** Wipe the exterior of the printer with a soft, damp cloth. Avoid using harsh chemicals.
- **Scanner Glass:** Clean the scanner glass with a soft, lint-free cloth moistened with a small amount of glass cleaner.
- **Print Head Cleaning:** If print quality declines (e.g., missing lines, incorrect colors), perform a print head cleaning cycle through the printer's maintenance menu on the touchscreen or via the printer software on your computer.

7. TROUBLESHOOTING

This section addresses common issues you might encounter. For more detailed troubleshooting, refer to the comprehensive user guide available on the Epson support website.

- **Printer Not Responding:**

- Check power connections and ensure the printer is turned on.
- Verify network connectivity (Wi-Fi signal strength, correct network selected).
- Restart the printer and your computer/router.

- **Poor Print Quality:**

- Perform a nozzle check and print head cleaning.
- Ensure genuine Epson ink cartridges are installed and not expired.
- Check paper type and quality settings in your print driver.

- **Paper Jams:**

- Follow the on-screen instructions on the printer's touchscreen to clear paper jams.
- Remove all jammed paper carefully to avoid tearing.
- Ensure paper is loaded correctly and not creased or curled.

- **Wireless Connection Issues:**

- Confirm your Wi-Fi password is correct.
- Move the printer closer to your wireless router.
- Temporarily disable any firewall software on your computer that might be blocking communication.

8. SPECIFICATIONS

Feature	Detail
Product Dimensions	17.2"D x 23.5"W x 8.1"H
Item Weight	21.5 pounds
Connectivity Technology	Wireless (Wi-Fi, Wi-Fi Direct), Ethernet, USB, Secure Digital Card
Printing Technology	Inkjet
Printer Output	Color
Ink Color	Black, Cyan, Magenta, Yellow, Photo Black (5-color Claria Premium Ink)
Maximum Print Speed (Monochrome)	15.8 ppm
Maximum Color Print Resolution	4800 dpi
Scanner Type	Photo
Max Input Sheet Capacity	30 (ADF)

Feature	Detail
Duplex	Automatic (Print, Copy, Scan)
Control Method	Touchscreen, Voice (Amazon Alexa, Vera)
Power Consumption	13 Watts (On-mode)
Special Features	Auto Document Feeder, Borderless Printing, Memory Card Slot, Touch Screen, CD Printing, Two Sided Printing

9. WARRANTY AND SUPPORT

9.1 Warranty Information

The Epson Expression Premium XP-7100 comes with a Limited Warranty. For specific terms, conditions, and duration of your warranty, please refer to the warranty documentation included with your product or visit the official Epson support website.

9.2 Customer Support

For further assistance, technical support, or to download the latest drivers and software, please visit the official Epson support website or contact Epson customer service. You can also find the full User Manual (PDF) and User Guide (PDF) online:

- [User Manual \(PDF\)](#)
- [User Guide \(PDF\)](#)

