

Manuals+

[Q & A](#) | [Deep Search](#) | [Upload](#)

Manuals.plus /

› [TP-Link](#) /

› TP-Link CPE610 Outdoor CPE/Access Point Instruction Manual

TP-Link CPE610

TP-Link CPE610 Outdoor CPE/Access Point Instruction Manual

1. INTRODUCTION

This manual provides detailed instructions for the installation, configuration, operation, and maintenance of the TP-Link CPE610 5GHz 300Mbps 23dBi Outdoor CPE/Access Point. The CPE610 is designed for outdoor wireless networking applications, offering excellent beam directivity, improved latency, and noise immunity with its high-gain directional 2x2 MIMO cassegrain antenna and dedicated metal reflector.

Proper setup, grounding, and cable shielding are essential for protection against lightning and electrostatic discharge. Consult an IT professional for assistance if needed.

2. PACKAGE CONTENTS

Verify that all items listed below are included in your package. If any item is missing or damaged, contact your vendor.

- TP-Link CPE610 Outdoor CPE Unit
- 24V 0.5A Passive PoE Adapter
- AC Power Cord
- Pole Mounting Straps
- Installation Guide



Figure 2.1: Exploded view of the CPE610 components.

This image displays the individual components of the TP-Link CPE610, including the main antenna unit, the reflector panels, and the mounting bracket with its associated hardware.

3. SETUP AND INSTALLATION

Follow these steps for proper installation and initial setup of your CPE610.

3.1 Hardware Installation

1. **Assemble the CPE Unit:** Attach the reflector panels to the main CPE unit. Ensure all parts are securely fastened.
2. **Mounting:** Use the provided pole mounting straps to secure the CPE610 to a pole or mast. Ensure the device is positioned for clear line-of-sight to the target area.
3. **Connect PoE Adapter:** Connect an Ethernet cable from the CPE610's Ethernet port to the "PoE" port on the 24V 0.5A Passive PoE Adapter.
4. **Connect to Network:** Connect another Ethernet cable from the "LAN" port on the PoE Adapter to your computer or network switch/router.
5. **Power On:** Connect the AC power cord to the PoE Adapter and then to a power outlet. The device will power on.

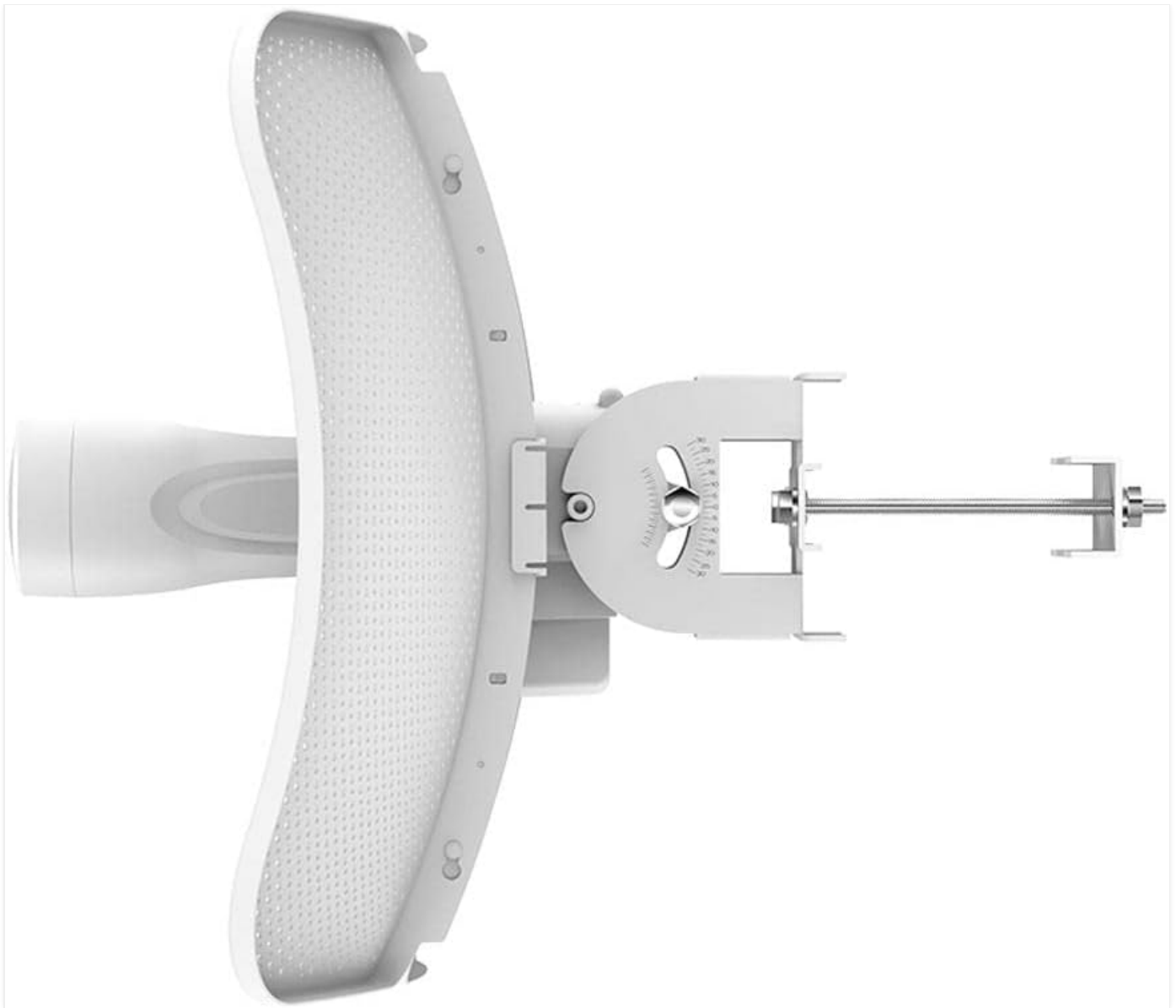


Figure 3.1: CPE610 with mounting bracket attached, ready for pole installation.

This image shows the TP-Link CPE610 with its adjustable mounting bracket, illustrating how it attaches to a pole for outdoor deployment.

3.2 Initial Configuration (PharOS Web Interface)

The CPE610 is managed via the PharOS web interface.

1. **Prepare your Computer:** Before connecting, set your computer's IP address manually to 192.168.0.10 with a subnet mask of 255.255.255.0.
2. **Access PharOS:** Open a web browser and navigate to <http://192.168.0.254>.
3. **Login:** The default username and password are admin. You will be prompted to change the password upon first login.
4. **Quick Setup:** Use the Quick Setup wizard to configure the device.
 - Select the desired operating mode (e.g., Access Point, Client, Repeater, Bridge).
 - Configure wireless settings such as SSID, security type (WPA2-PSK recommended), and password.
 - Adjust network settings, including IP address, subnet mask, and gateway, to match your network infrastructure.
5. **Save Settings:** Apply and save all configurations.
6. **Restore Computer IP:** Change your computer's IP address back to DHCP (automatic) or its original static IP.

Note: For client mode setup, especially with mesh networks like Google Wifi, it may be necessary to disable WDS (Wireless Distribution System) in the CPE610's settings for proper connectivity.

4. OPERATING THE CPE610

Once configured, the CPE610 operates autonomously. You can monitor its status and adjust settings via the PharOS web interface.

4.1 Monitoring Status

- **Status Page:** The PharOS Status page provides real-time information on wireless connection, network traffic, and system logs.
- **Signal Strength:** Regularly check the signal strength indicators to ensure optimal performance, especially after initial installation or environmental changes.

4.2 Advanced Settings

The PharOS interface offers advanced options for fine-tuning performance:

- **Transmission Power:** Adjust the transmission power (0 to 27dBm/500mW) to comply with local regulations and optimize range.
- **Pharos MAXtream TDMA:** Enable this technology for improved throughput, capacity, and reduced latency in Point-to-MultiPoint (PtMP) applications.
- **Channel Selection:** Select appropriate 5GHz channels to avoid interference.
- **Firmware Upgrade:** Periodically check for and install firmware updates from the TP-Link website to enhance features and security.

5. MAINTENANCE

Regular maintenance ensures the longevity and optimal performance of your CPE610.

- **Physical Inspection:** Periodically inspect the device and cabling for any signs of wear, damage, or corrosion, especially in harsh outdoor environments.
- **Cleaning:** Gently clean the exterior of the unit with a soft, dry cloth. Do not use liquid cleaners or aerosols.
- **Firmware Updates:** Keep the device firmware updated to the latest version available from the official TP-Link website. This can improve stability, performance, and security.
- **Grounding:** Ensure proper grounding and cable shielding are maintained to protect against lightning and electrostatic discharge.
- **Remote Reset:** The Passive PoE adapter allows for remote resetting of the device. Refer to the installation guide for specific instructions.

6. TROUBLESHOOTING

This section addresses common issues you might encounter with the CPE610.

6.1 No Power/Device Not Responding

- **Check Power Connections:** Ensure the AC power cord is securely connected to the PoE adapter and a working power outlet.
- **Verify Ethernet Cable:** Confirm the Ethernet cable from the CPE to the PoE adapter's "PoE" port is properly connected and undamaged.

- **PoE Adapter Functionality:** Test the PoE adapter with another compatible device if possible, or try a different PoE adapter.

6.2 Cannot Access PharOS Web Interface

- **IP Address Configuration:** Ensure your computer's IP address is set manually to 192.168.0.10 (or within the same subnet as the CPE's default 192.168.0.254) before attempting to access the interface.
- **Cable Connection:** Verify the Ethernet cable from the PoE adapter's "LAN" port to your computer is secure.
- **Browser Issues:** Try a different web browser or clear your browser's cache.
- **Firewall/Antivirus:** Temporarily disable any firewall or antivirus software that might be blocking access.

6.3 Poor Wireless Performance/Connection Drops

- **Line of Sight:** Ensure there is a clear line of sight between the CPE610 and the target device/access point. Obstructions can severely degrade performance.
- **Antenna Alignment:** Precisely align the directional antenna for optimal signal strength. Use the signal strength indicators in the PharOS interface.
- **Interference:** Check for potential sources of interference (e.g., other 5GHz devices, physical obstacles). Try changing the wireless channel.
- **Firmware:** Ensure the latest firmware is installed.
- **WDS Setting:** If operating in client mode, ensure WDS is disabled if experiencing connectivity issues, especially with mesh networks.

7. SPECIFICATIONS

Feature	Detail
Brand	TP-Link
Model	CPE610
Antenna	High-gain directional 2x2 MIMO antenna with 23dBi gain
Frequency	5GHz
Wireless Standard	802.11n/a
Maximum Wireless Rate	300Mbps
Transmission Power	Adjustable from 0 to 27dBm/500mW
PoE Support	Passive PoE (24V 0.5A adapter included)
PoE Range	Up to 60 meters (200 feet)
Management	Centralized management system - Pharos Control
Color	White
Item Weight	0.46 Kilograms
UPC	845973081027

8. WARRANTY INFORMATION

The TP-Link CPE610 comes with a **2-year warranty** from the date of purchase. This warranty covers defects in materials and workmanship under normal use. It does not cover damage caused by accidents, misuse, unauthorized modifications, or external factors such as lightning strikes or power surges not mitigated by proper grounding.

For warranty claims, please retain your proof of purchase and contact TP-Link customer support.

9. TECHNICAL SUPPORT

For further assistance, technical support, or to download the latest firmware and documentation, please visit the official TP-Link website.

- **TP-Link Official Website:** www.tp-link.com
- **Support Page:** Locate the support section for your specific model (CPE610) for FAQs, troubleshooting guides, and contact information.

It is recommended to consult the online resources before contacting technical support, as many common issues can be resolved through available documentation.

