

Manuals+

[Q & A](#) | [Deep Search](#) | [Upload](#)

manuals.plus /

› [TOMAX](#) /

› [TOMAX Folding Sawhorse Instruction Manual - Model: Folding Sawhorse](#)

TOMAX Folding Sawhorse

TOMAX Folding Sawhorse Instruction Manual

Model: Folding Sawhorse

INTRODUCTION

Thank you for choosing the TOMAX Folding Sawhorse. This manual provides essential information for the safe and efficient assembly, operation, and maintenance of your sawhorse. Please read all instructions carefully before use and retain this manual for future reference.

Safety Information

- Always ensure the sawhorse is placed on a stable, level surface before use.
- Do not exceed the maximum weight capacity of 440 lbs (200 kg).
- Ensure all locking mechanisms are fully engaged before placing any load on the sawhorse.
- Keep hands and fingers clear of moving parts during setup and adjustment.
- Inspect the sawhorse for any damage or loose parts before each use. Do not use if damaged.

SETUP AND ASSEMBLY

The TOMAX Folding Sawhorse is designed for quick and easy setup. No complex assembly is required.

1. Unfolding the Sawhorse

1. Place the folded sawhorse on a flat surface.
2. Grasp the handle and carefully unfold the legs outwards until they are fully extended.
3. Ensure the legs snap into their fully open position. The internal locking tabs should engage to secure the legs.

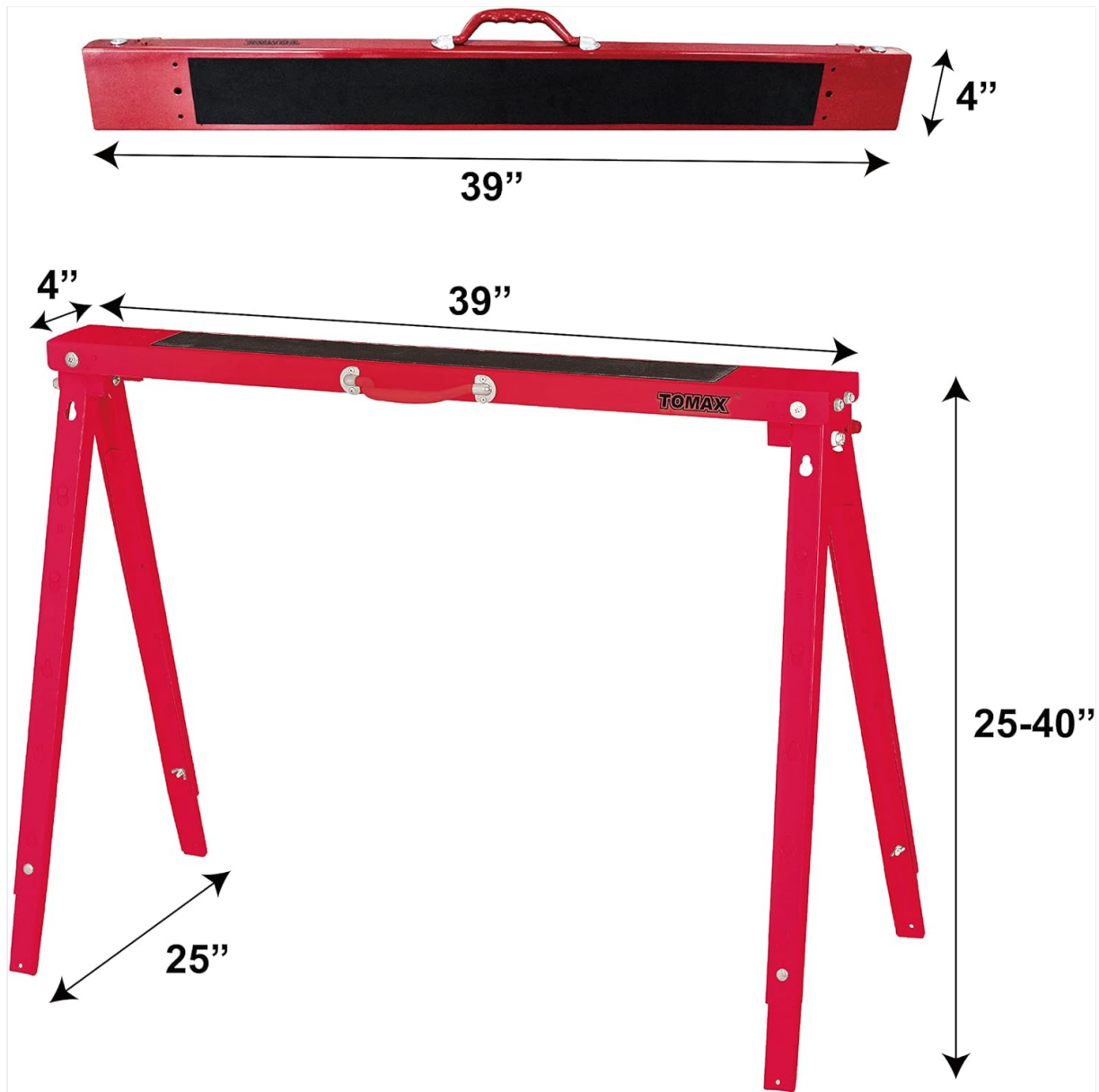


Image: The TOMAX Folding Sawhorse shown in both its folded and unfolded states, with key dimensions indicating a length of 39 inches and an adjustable height range of 25-40 inches.

2. Removing Lock Tabs (Initial Setup)

For initial use, ensure any protective 'Lock Tabs' are removed from the leg mechanisms. These are typically clear plastic pieces designed to prevent movement during shipping.

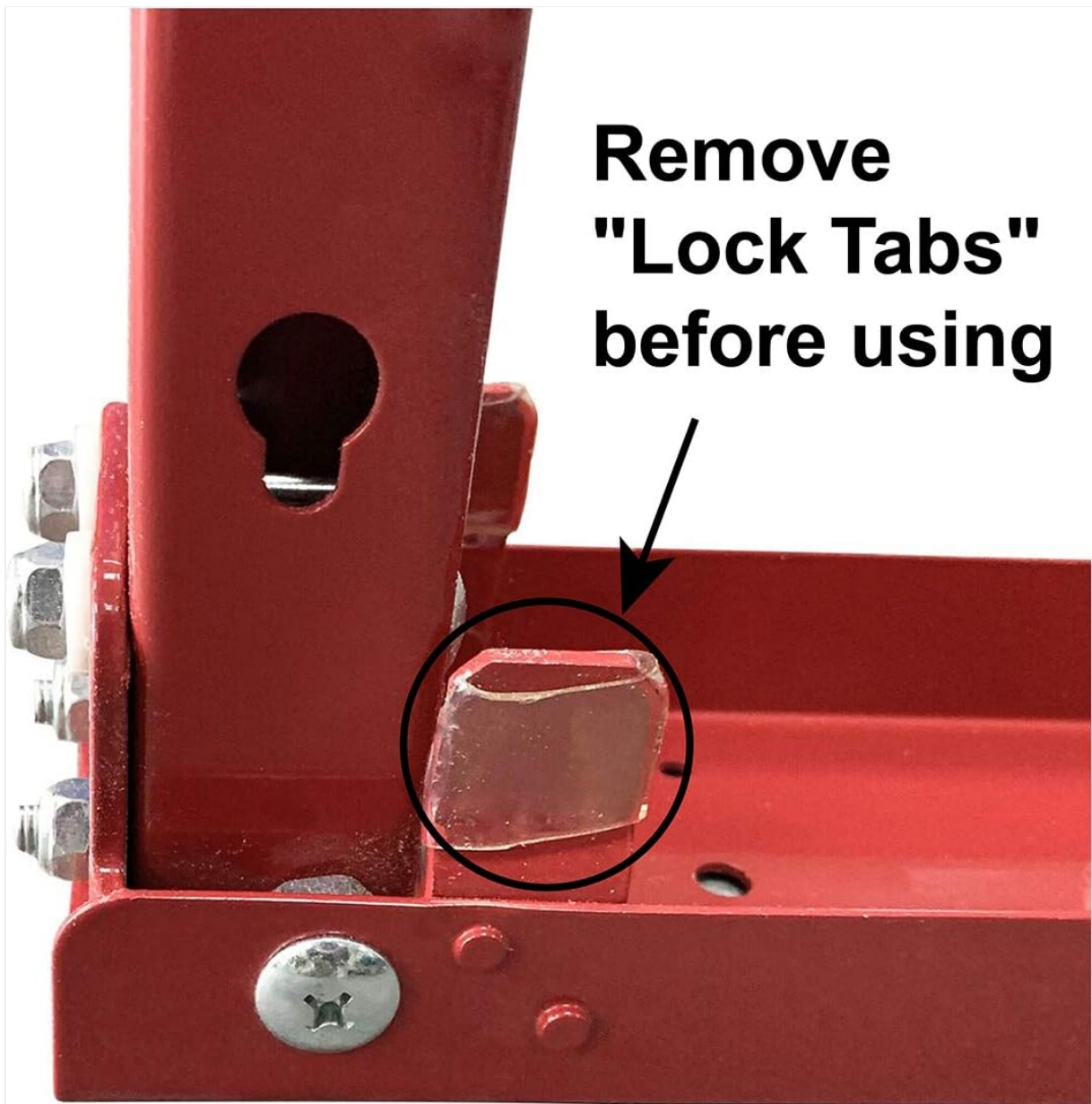


Image: A close-up view of the sawhorse leg mechanism, highlighting a 'Lock Tab' with an arrow and text instructing to remove it before use.

3. Adjusting Height

1. Locate the solid bolts and locking pins on each leg.
2. To adjust, pull out the locking pins and slide the inner leg section to the desired height.
3. Ensure the locking pins fully re-engage through the corresponding holes at the chosen height. Verify that all four legs are adjusted to the same height for stability.

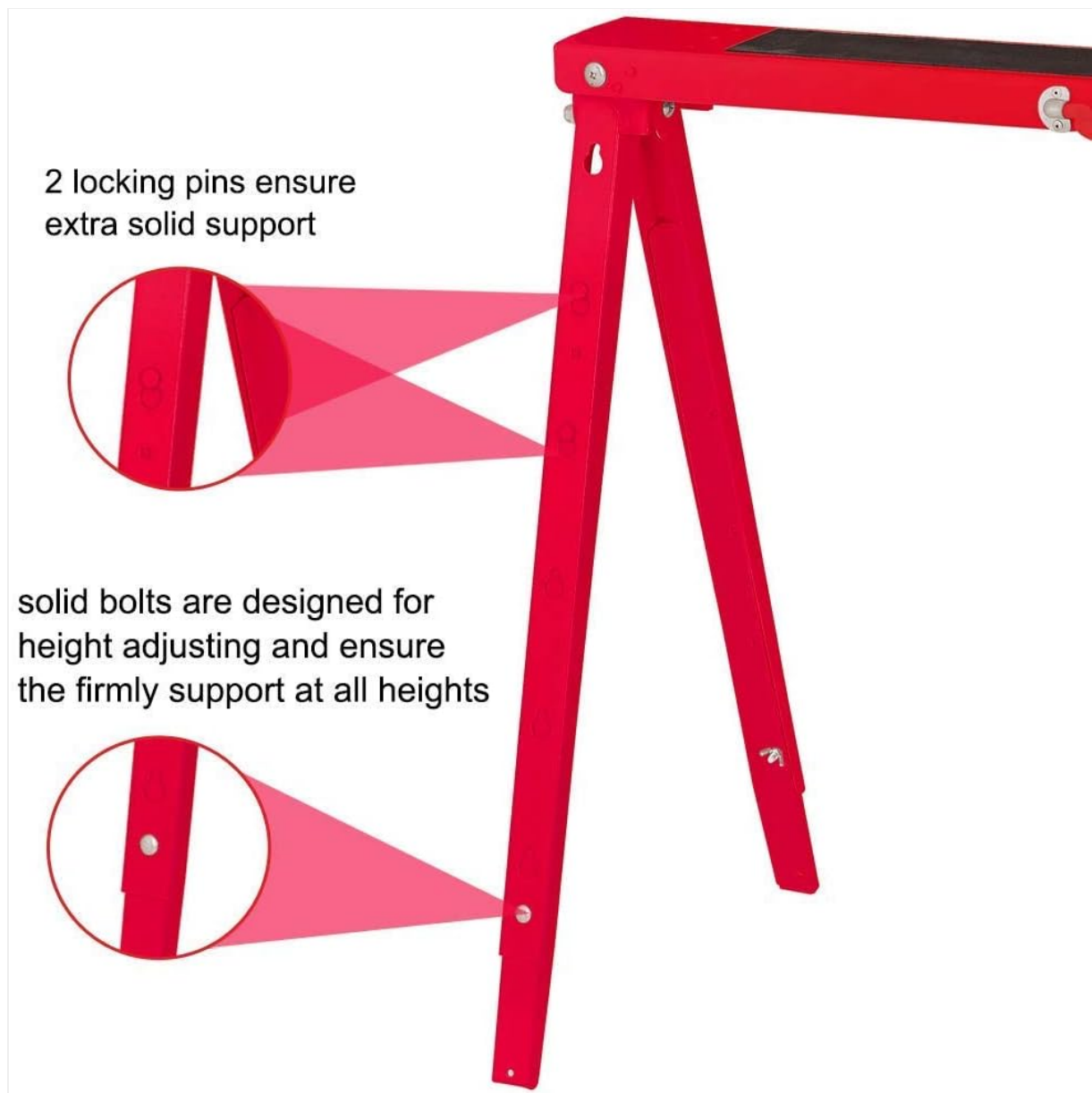


Image: A detailed view of the sawhorse leg, illustrating the two locking pins and solid bolts designed for secure height adjustment.

OPERATING INSTRUCTIONS

Once set up, the TOMAX Folding Sawhorse provides a stable and versatile work surface.

Using the Sawhorse

- **Load Placement:** Distribute weight evenly across the anti-slip work surface. Do not concentrate heavy loads on one small area.
- **Weight Capacity:** Adhere strictly to the 440 lb (200 kg) maximum weight capacity. Overloading can cause structural failure and injury.
- **Work Surface:** The sawhorse features an anti-slip rubber mat on its top surface to help secure materials during work.
- **Creating a Work Table:** Utilize the built-in mounting holes to secure a plywood sheet or other suitable material, transforming the sawhorse into a temporary work table.

built-in mounting holes
help transfer the sawhorse
into a work table with a
polywood sheet

unique ergonomic
design grip handle

anti-slip work surface



Image: An illustration highlighting key features of the sawhorse, including built-in mounting holes for creating a work table, a unique ergonomic grip handle, and the anti-slip work surface.

MAINTENANCE AND STORAGE

Proper maintenance and storage will extend the life of your sawhorse.

Cleaning

- Wipe down the steel frame with a damp cloth to remove dust and debris.
- For stubborn dirt, use a mild soap solution and dry thoroughly.
- Avoid abrasive cleaners or solvents that could damage the powder-coated finish.

Storage

The sawhorse features a foldable design for convenient storage and transportation.

1. Ensure no load is on the sawhorse.
2. If legs are extended, retract them to their lowest position by pulling the locking pins and sliding the inner leg

sections upwards.

- Carefully fold the legs inwards until they are flush with the main beam. The snap pins are designed for easy folding.
- Store in a dry location to prevent rust.



Image: The TOMAX Sawhorse shown in its fully folded position, illustrating how the legs tuck neatly into the main beam for compact storage.



Image: A top-down view of the TOMAX Sawhorse in its folded state, clearly showing the integrated carry handle for easy transportation.

TROUBLESHOOTING

This section addresses common issues you might encounter.

Legs Not Locking Properly

- Issue:** Legs do not fully extend or lock into place when unfolding.
- Solution:** Ensure that the internal locking tabs are not obstructed. Sometimes, minor adjustments to these tabs may be needed to allow full extension and engagement. Gently tap the tab with a rubber mallet if it appears misaligned.
- Issue:** Legs collapse or feel unstable during use.
- Solution:** Verify that all locking pins for height adjustment are fully engaged in their respective holes. Ensure the sawhorse is on a firm, level surface. Do not exceed the weight capacity.

Difficulty Adjusting Height

- Issue:** Locking pins are stiff or difficult to pull out.
- Solution:** Apply a small amount of lubricant (e.g., silicone spray) to the pins and the sliding mechanism. Ensure there is no dirt or debris obstructing the movement.
- Issue:** Inner leg section is hard to slide.
- Solution:** Check for any bending or damage to the leg sections. Clean any accumulated dirt or rust. Lubricate if necessary.

SPECIFICATIONS

Feature	Detail
Model	Folding Sawhorse

Brand	TOMAX
Material	Alloy Steel
Finish Type	Powder Coated
Load Capacity	440 lbs (200 kg)
Adjustable Height	25 inches to 40 inches
Product Dimensions (L x W x H)	38.58 x 3.07 x 4.92 inches (folded)
Item Weight	18.86 pounds (8.55 kg)
Assembly Required	No



WIDTH: 39"

Width: 39"



HEIGHT EXTENDED
FROM: 25" - 40"

Height: 25"-40"



DEPTH: 25"

Depth: 25"



ITEM WEIGHT:
18.3 lbs

Weight: 18.3 lbs

WARRANTY INFORMATION

TOMAX products are manufactured to high-quality standards. For specific warranty details, including coverage and duration, please refer to the warranty card included with your purchase or contact TOMAX customer support. Keep your proof of purchase for warranty claims.

CUSTOMER SUPPORT

If you have any questions, require assistance, or need to report an issue with your TOMAX Folding Sawhorse, please contact TOMAX customer support. Contact information can typically be found on the product packaging or the official TOMAX website.

