

## Padmate 5647447827

# Padmate Wireless Earbuds User Manual

Model: 5647447827

## INTRODUCTION

Thank you for choosing Padmate Wireless Earbuds. This manual provides detailed instructions on how to set up, operate, and maintain your earbuds to ensure optimal performance and longevity. Please read this manual carefully before using the product.

## PRODUCT OVERVIEW

The Padmate Wireless Earbuds are designed for a superior audio experience with features such as Bluetooth 5.0 connectivity, noise cancellation, and a built-in microphone. The portable charging case provides extended playtime, making them ideal for daily use and sports activities.



Image: Padmate Wireless Earbuds and their portable charging case.

## Components

Ergonomic design keeps earbuds secure in your ears without hurting. No falling out.

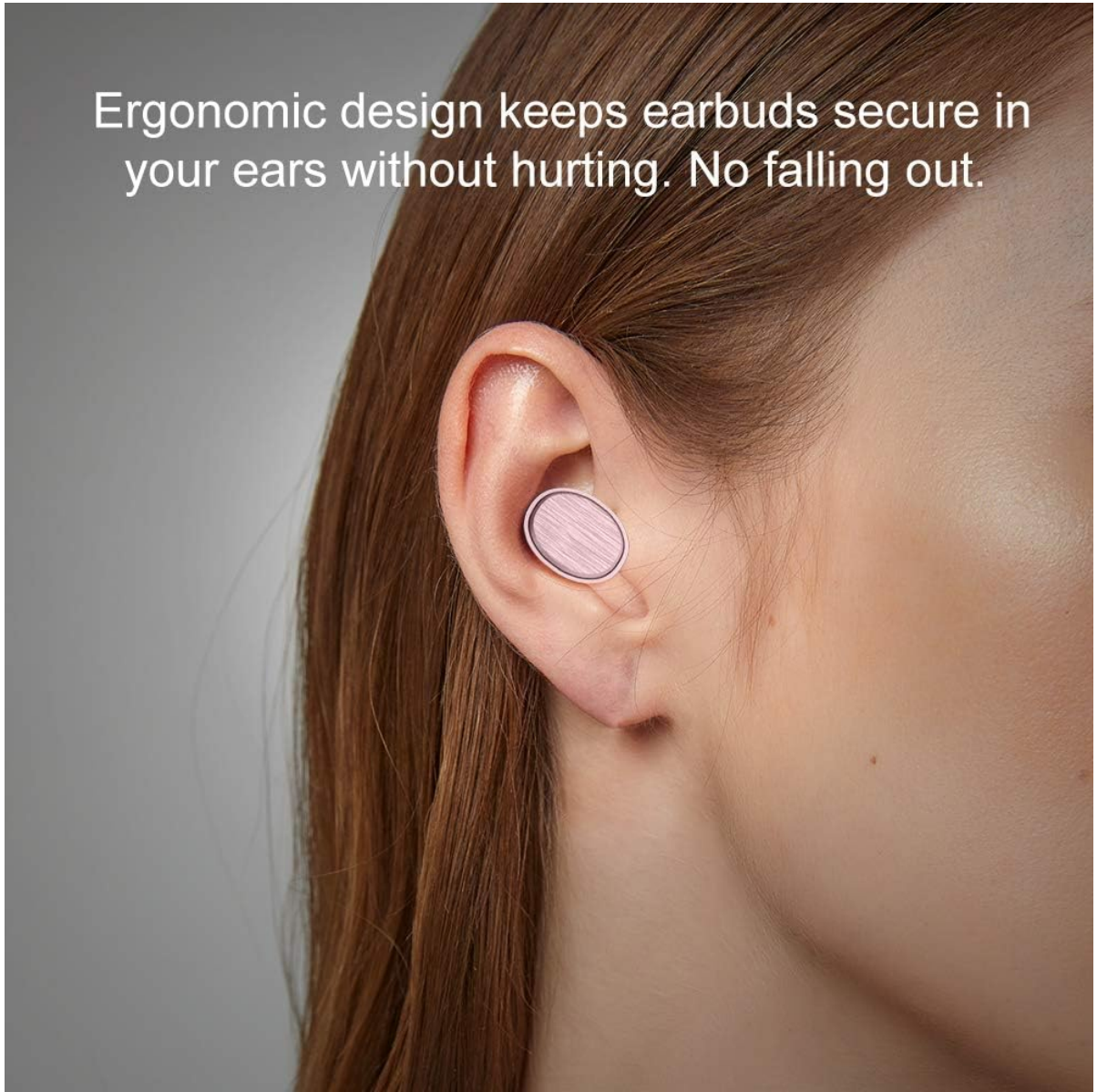


Image: Detailed view of the charging case and an earbud, highlighting the metal contacts for charging, power indicator lights on the case, and the LED indicator on the earbud.

- **Earbuds:** Left and Right earbuds with integrated controls and microphones.
- **Charging Case:** Portable case for charging and storing the earbuds. Features power indicator lights.
- **Metal Contacts:** Located on both earbuds and inside the charging case for power transfer.
- **LED Indicator:** On each earbud, indicates status (pairing, charging, connected).
- **Power Indicator:** On the charging case, shows battery level.

## SETUP

### 1. Initial Charging

Before first use, ensure both the earbuds and the charging case are fully charged.

1. Place the earbuds into the charging case. Ensure the metal contacts align.
2. Connect the charging case to a power source using a compatible USB cable.
3. The power indicator lights on the case will illuminate to show charging status. The indicative light on the earbuds will turn blue when fully charged.

Enjoy superior wireless calls and music experience without distortion.



Super  
Deep Bass



Noise  
Isolation



Stable  
Connection



HD  
Microphone

Image: The Padmate earbuds securely placed within their charging case, indicating they are ready for charging or storage.

## 2. Pairing with a Device

Follow these steps to pair your earbuds with your Bluetooth-enabled device:

# Easy to Setup & Pair



**1** First Time USE:  
Put the Earbuds into  
the Charging Box until the  
Indicative Light Turns Blue.



**2** Take out the Two Buds  
from the Cradle.



**3** Press the MFB of the Two  
Earbuds until Blue Lights Glitter,  
Saying "Connected, "Left Channel"  
and "Connected, Right Channel".



**4** Activate Bluetooth on Your  
Devices. Select "X12" with Pairing  
Successful, Second Device  
Connected".

Image: Visual guide demonstrating the four steps for initial setup and Bluetooth pairing of the earbuds with a smartphone.

1. **First Time Use:** Put the earbuds into the charging box until the indicative light turns blue.
2. Take out both earbuds from the cradle. They will automatically enter pairing mode.
3. Press the Multi-Function Button (MFB) on both earbuds until blue lights glitter. You will hear voice prompts like "Connected", "Left Channel", and "Connected", "Right Channel".
4. Activate Bluetooth on your device (e.g., smartphone, tablet).
5. Search for "X12" in the list of available Bluetooth devices and select it to connect.
6. Once successfully paired, you will hear a confirmation sound.

The earbuds support connecting to two different devices simultaneously, provided they are within the 10-meter range.

## OPERATING INSTRUCTIONS

### Wearing the Earbuds

The earbuds are ergonomically designed for a secure and comfortable fit. Choose the appropriate ear tip size for optimal sound and comfort.



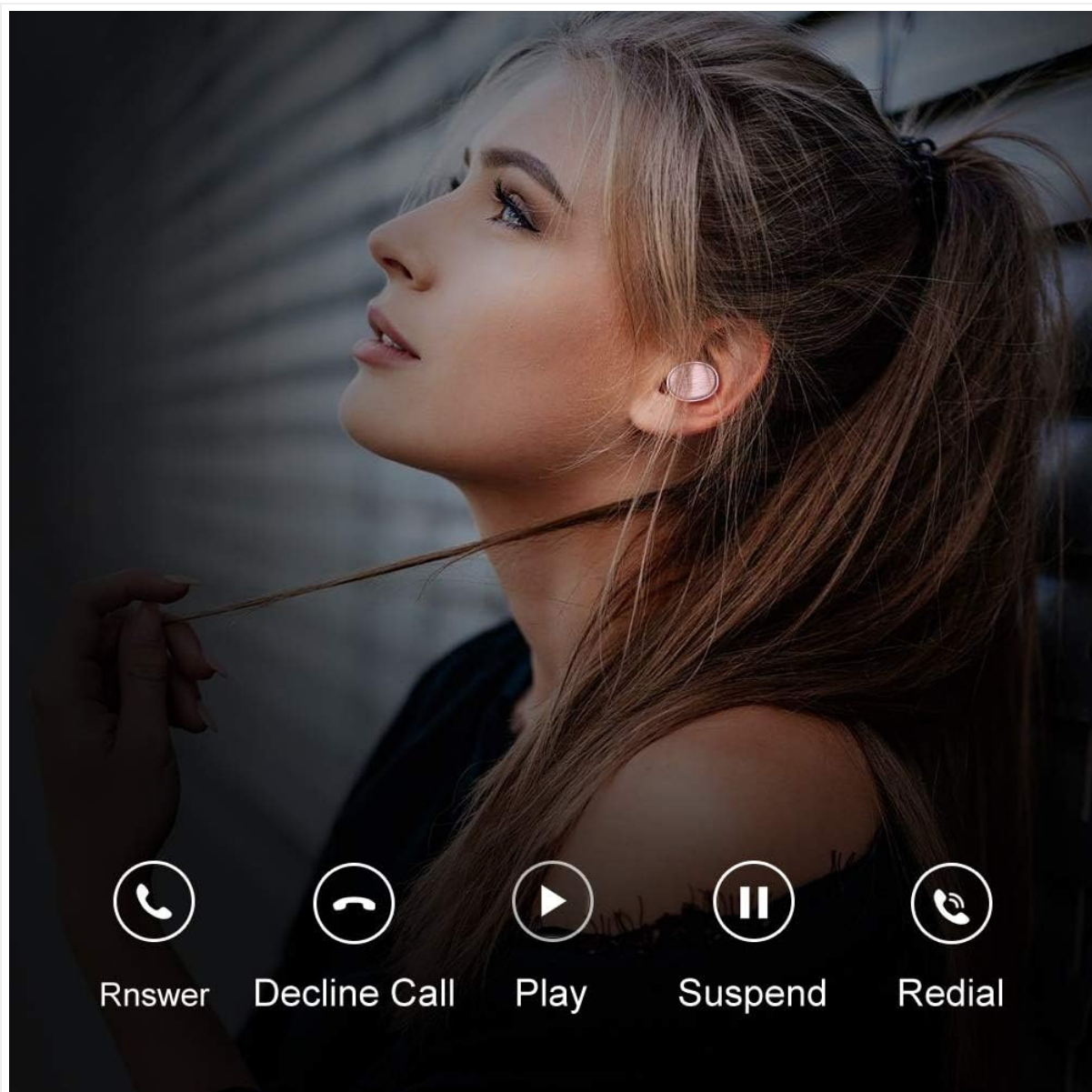


Image: A close-up of an earbud correctly placed in a person's ear, demonstrating the ergonomic design for a secure fit.

### **Earbud Controls (One Touch Button)**

Each earbud features a multi-function touch button for controlling various functions:



Image: An illustration showing the location of the one-touch button on the earbud and its various functions, including power on/off, answer call, redial, hang up, play, and pause.

- **Power On/Off:** Press and hold the button for a few seconds.
- **Play/Pause Music:** Single press the button during music playback.
- **Answer Call:** Single press the button when an incoming call rings.
- **Decline Call:** Press and hold the button for 2 seconds during an incoming call.
- **Hang Up Call:** Single press the button during a call.
- **Redial Last Number:** Double press the button.

The earbuds provide a superior wireless call and music experience without distortion.

## BATTERY AND CHARGING

---

The earbuds offer extended playtime with the portable charging case.



**1.5 hr**

charging time

**3 hr**

continuously  
music play time

**4 hr**

continuously  
call time

**60 hr**

standby time

Image: An infographic detailing the battery performance of the Padmate earbuds, including charging time, continuous music playtime, continuous call time, and standby time.

- **Earbud Playtime:** Up to 3 hours of continuous music playtime on a single charge.
- **Call Time:** Up to 4 hours of continuous call time.
- **Charging Case:** Provides an additional 9 hours of playtime (3 full charges for earbuds).
- **Charging Time:** Approximately 1.5 hours for a full charge of the earbuds.
- **Standby Time:** Up to 60 hours.

Always place the earbuds back into the charging case when not in use to keep them charged and protected.

## MAINTENANCE

### Cleaning

- Regularly clean the earbuds and charging case with a soft, dry, lint-free cloth.
- Do not use harsh chemicals, cleaning solvents, or strong detergents.
- Ensure charging contacts on both earbuds and case are clean and free of debris for proper charging.

### Storage

- Store the earbuds in their charging case when not in use to protect them from damage and keep



them charged.

- Avoid storing in extreme temperatures (hot or cold) or in highly humid environments.

## Water and Sweat Resistance

The earbuds are IPX4 water and sweat resistant, making them suitable for sports and exercise. However, they are not waterproof and should not be submerged in water.

## TROUBLESHOOTING

Problem	Solution
Earbuds not pairing	<ul style="list-style-type: none"><li>• Ensure both earbuds are fully charged.</li><li>• Make sure Bluetooth is enabled on your device.</li><li>• Place earbuds back in the case, then take them out again to re-enter pairing mode.</li><li>• Forget "X12" from your device's Bluetooth list and try pairing again.</li><li>• Ensure earbuds are within 10 meters of your device.</li></ul>
No sound from one earbud	<ul style="list-style-type: none"><li>• Check if the earbud is charged.</li><li>• Try resetting the earbuds (refer to pairing instructions).</li><li>• Ensure both earbuds are properly connected to your device.</li></ul>
Charging case not charging	<ul style="list-style-type: none"><li>• Ensure the charging cable is securely connected to both the case and the power source.</li><li>• Try a different USB cable or power adapter.</li><li>• Clean the charging port on the case.</li></ul>
Poor sound quality	<ul style="list-style-type: none"><li>• Ensure earbuds are properly seated in your ears.</li><li>• Try different sized ear tips for a better seal.</li><li>• Clean any debris from the earbud speakers.</li><li>• Ensure your device is within the Bluetooth range (10 meters) and there are no significant obstructions.</li></ul>

## SPECIFICATIONS

- **Model Number:** 5647447827
- **Connectivity Technology:** Wireless (Bluetooth 5.0)
- **Wireless Communication Technology:** Bluetooth
- **Ear Placement:** In Ear
- **Form Factor:** In Ear
- **Noise Control:** Active Noise Cancellation
- **Material:** Acrylonitrile Butadiene Styrene (ABS)
- **Water Resistance Level:** IPX4 (Water Resistant)
- **Item Weight:** 4.6 ounces
- **Product Dimensions:** 4.3 x 2.5 x 4.5 inches
- **Batteries:** 3 Lithium Ion batteries required (included)

- **Manufacturer:** Padmate
- **Date First Available:** June 19, 2018

## WARRANTY AND SUPPORT

---

Padmate products are designed and manufactured to the highest quality standards. For warranty information or technical support, please refer to the warranty card included with your purchase or visit the official Padmate website.

For further assistance, please contact Padmate customer support.