

Manuals.plus /

- › DOKIO /
- › DOKIO 200W Portable Foldable Monocrystalline Solar Panel Kit User Manual

DOKIO dokio-002

DOKIO 200W Portable Foldable Monocrystalline Solar Panel Kit

User Manual

Brand: DOKIO | Model: dokio-002

1. PRODUCT OVERVIEW

The DOKIO 200W Portable Foldable Monocrystalline Solar Panel Kit is designed to provide mobile solar energy for various outdoor applications. Its lightweight and compact design ensures easy storage and transport, making it ideal for caravans, RVs, trucks, boats, hiking, and general outdoor use.



Image 1.1: The DOKIO 200W Portable Foldable Monocrystalline Solar Panel Kit in its unfolded state, ready for use.

Key Features:

- **Pliable and Portable:** Ultra-lightweight (4.4kg) with a compact folded size (67x49x2.8cm) and an open size of 195x67x0.7cm, allowing for easy storage and transport.

- **IP65 Waterproof:** Protects the solar panels against water splashes, occasional rain, and humid fog.
- **High-Performance Monocrystalline Solar Panels:** Utilizes high-efficiency monocrystalline cells for superior energy conversion.
- **Versatile Application:** Ideal for mobile energy needs in caravans, RVs, trucks, boats, hiking, skiing, and general outdoor activities.
- **Integrated 20A Charge Controller:** Features an integrated 20A charge controller with an LED display and two USB ports for outdoor charging.

2. PRODUCT COMPONENTS

The DOKIO 200W Solar Panel Kit comes with all necessary components for immediate use.

- Solar Panels (200W foldable unit)
- Integrated 20A Charge Controller
- Connection Cables
- Various DC Adapters

UNIQUE, FULL-SET ACCESSORIES



Detachable non-integrated LCD controller: **Safer**

Product Instructions*1



3m cable*1



1m cable*1



JY60 short connector*1



3.5x1.35mm



5.5x2.1mm



5.5x2.5mm



6.4x4mm



8mm

Image 2.1: Overview of the unique, full-set accessories included with the DOKIO solar panel kit.

3. SETUP INSTRUCTIONS

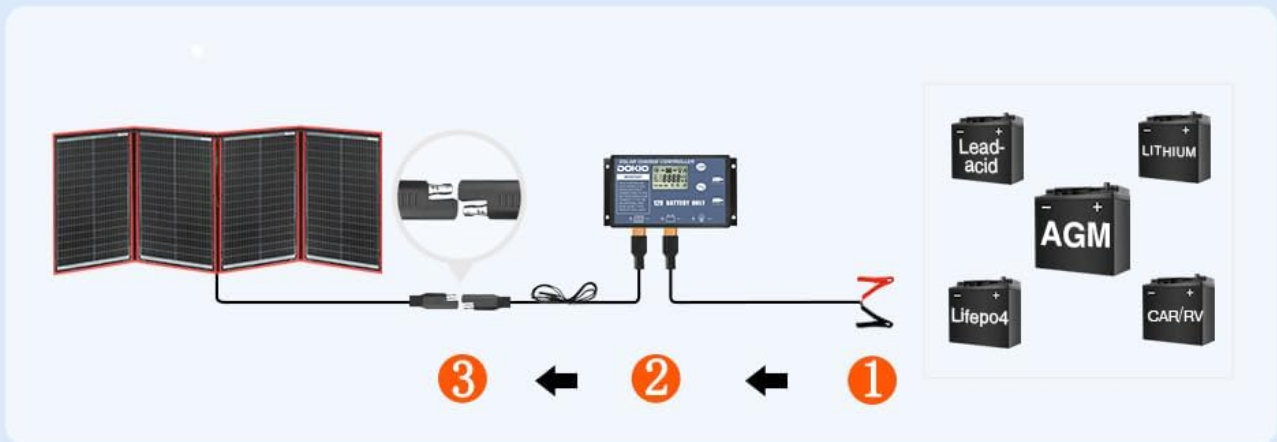
Follow these steps to set up your DOKIO 200W Solar Panel Kit.

3.1. Connecting to a 12V Battery

1. Connect the solar panel to the charge controller.
2. Connect the charge controller to your 12V battery (compatible with Lead-acid, Lithium, LiFePO₄, AGM, CAR/RV batteries).
3. Ensure all connections are secure.

JUST 3 STEPS, EASY TO USE

FOR 12V BATTERY



FOR POWER STATION

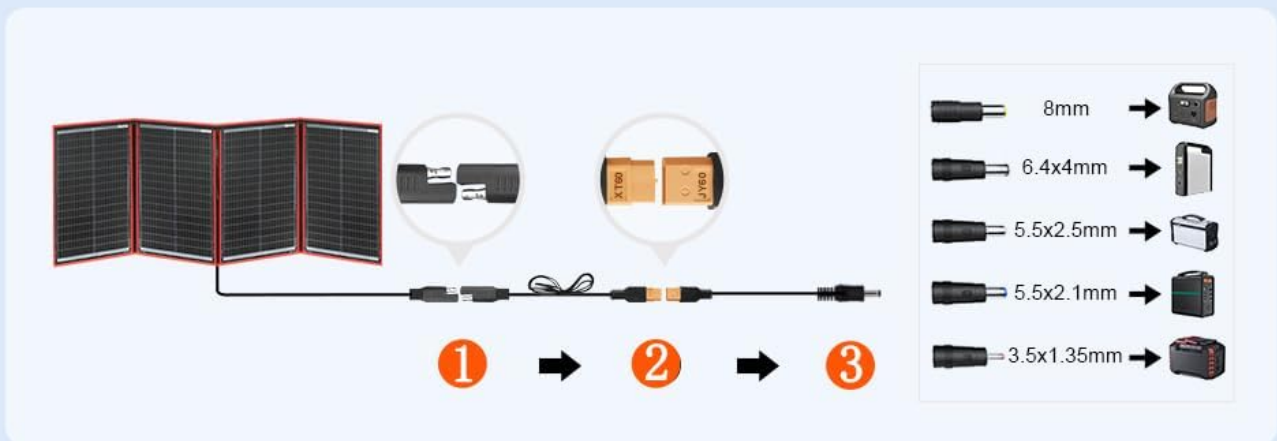


Image 3.1: Step-by-step diagram for connecting the solar panel to a 12V battery.

3.2. Connecting to a Power Station

1. Connect the solar panel to the appropriate DC adapter for your power station.
2. Connect the DC adapter to the power station's input port.
3. Ensure all connections are secure.

LIGHTWEIGHT AND PORTABLE



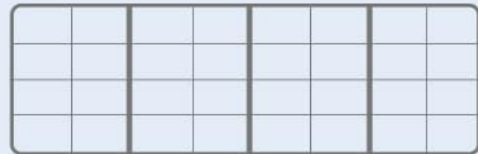
Nettogewicht

4.4kg



Dimensions Folded

67 x 49 x 2.8cm



Unfolded Size

195 X 67 x 0.6cm

Image 3.2: Step-by-step diagram for connecting the solar panel to a power station using various DC adapters.

4. OPERATING INSTRUCTIONS

4.1. Maximizing Power Output

To ensure optimal performance and maximize power output from your solar panel, consider the following:

- **Angle Towards the Sun:** Solar panels perform best when angled directly (ideally 90°) toward the sun, especially during peak sunlight hours (around noon).
- **Keep Panel Uncovered and Shadow-Free:** Ensure no objects or shadows obstruct the solar panel surface. Even partial shading can significantly reduce efficiency.
- **Check Power Station Input:** Be aware of your power station's maximum input wattage. Some power stations may cap the input regardless of the charger's output.

LONG CABLE, LAZY DAYS



Image 4.1: Guidelines for maximizing power output and a summary of technical details.

4.2. General Usage Scenarios

The DOKIO 200W Solar Panel Kit is versatile and suitable for various outdoor charging needs:

- **Camping:** Power your devices and small appliances while enjoying the outdoors.
- **RVs/Caravans:** Keep your RV batteries charged for extended trips.
- **Hiking:** A portable power source for remote adventures.
- **Emergency Power:** A reliable backup power source during outages.

STAY CHARGED ANYWHERE, ANYTIME!




Camping




RVs




Hiking




Emergency
Power

Image 4.2: The DOKIO solar panel provides power for camping, RVs, hiking, and emergency situations.

HOW TO **MAXIMIZE** POWER OUTPUT?

- 1 Peak sunlight (noon) hits hardest. Solar panels perform best when angled 90° toward the sun.
- 2 Keep the panel uncovered and shadow-free. Wipe the solar panel surface with a damp cloth to remove dust and dirt.
- 3 Do your power stations have a maximum input wattage? For example, the Jackery Explorer 500 caps its input at 100W regardless of the charger's output



TECHNICAL DETAILS

Maximum power	Pmax	220 Wp ± 3%
Open circuit voltage	Voc	22.50 V
Short-circuit current	Isc	12.36 A
Maximum power voltage	Vmp	18.00 V
Maximum power current	Imp	12.22 A

Image 4.3: The long cable (9.84ft) allows for flexible placement of the solar panel.

5. MAINTENANCE

Proper maintenance ensures the longevity and efficiency of your DOKIO solar panel.

5.1. Cleaning the Solar Panel

Regularly wipe the solar panel surface with a damp cloth to remove dust, dirt, and debris. This helps maintain optimal sunlight absorption and power generation.

5.2. Water Resistance

The solar panel is rated IP65 waterproof, protecting it from water splashes, light rain, and humid conditions. However, it is not designed for submersion. Ensure the controller and connections are kept as dry as possible.

QUALITY IN EVERY DETAIL



Image 5.1: Details highlighting the water-resistant design and high-efficiency cells.

6. TROUBLESHOOTING

The integrated 20A charge controller is equipped with multiple protection features to ensure safe and reliable operation.

6.1. Controller Protection Features

The controller provides the following safeguards:

- **Overcharge Protection:** Prevents battery damage from excessive charging.
- **Overload Protection:** Protects against drawing too much current from the system.
- **Over-discharge Protection:** Prevents batteries from being drained too low, extending their lifespan.
- **Reverse Polarity Protection:** Safeguards the system from damage if connections are made incorrectly.
- **Temperature Compensation:** Adjusts charging parameters based on ambient temperature for optimal battery health.

- **Short-circuit Protection:** Automatically shuts down in case of a short circuit to prevent damage.



Image 6.1: The protective features of the LCD controller ensure safe operation and battery health.

6.2. Common Issues and Solutions

- **Low Power Output:** Ensure the panel is angled directly towards the sun and is free from shadows or dirt. Check all connections for looseness.
- **Controller Display Not Working:** Verify that the solar panel is receiving sufficient sunlight and that the battery is connected correctly. Check for any loose wires.
- **Devices Not Charging:** Confirm that the output ports (USB, DC) are correctly connected to your devices. Ensure the battery connected to the controller has sufficient charge.

7. SPECIFICATIONS

Detailed technical specifications for the DOKIO 200W Portable Foldable Monocrystalline Solar Panel Kit.

Specification	Value
Manufacturer	DOKIO
Model Number	dokio-002
Product Dimensions (Folded)	67 x 49 x 2.8 cm
Product Dimensions (Unfolded)	195 x 67 x 0.7 cm
Weight	4.1 Kilograms
Material	Monocrystalline Silicon
Maximum Power (Pmax)	200 Watt (220 Wp \pm 3%)
Open Circuit Voltage (Voc)	22.50 V
Short-circuit Current (Isc)	12.36 A
Maximum Power Voltage (Vmp)	18.00 V
Maximum Power Current (Imp)	12.22 A
Amperage	20 A (Controller)
Maximum Voltage	24 Volts
Efficiency	High Efficiency
Included Components	Solar Panels, Controller, Cable
Batteries Included/Required	No
UPC	682559949056, 663577565732

8. WARRANTY AND SUPPORT

DOKIO is committed to providing quality products and customer satisfaction.

8.1. Product Support

For any questions, technical assistance, or support regarding your DOKIO solar panel kit, please visit the official DOKIO brand store on Amazon or contact DOKIO customer service through the platform where you purchased the product. The brand store can be accessed via this link: [DOKIO Brand Store](#).

8.2. Spare Parts Availability

Information regarding the availability of spare parts for this product is currently not provided by the manufacturer.