



Manuals.plus /

› SAMSUNG /

› SAMSUNG ET-WV525KWE GUS Mesh Router User Manual

SAMSUNG ET-WV525KWE GUS

SAMSUNG ET-WV525KWE GUS Mesh Router User Manual

Model: ET-WV525KWE GUS

1. PRODUCT OVERVIEW

The Samsung ET-WV525KWE GUS Mesh Router system provides comprehensive whole-home Wi-Fi coverage and integrates SmartThings Hub functionality. This system utilizes multiple access points to establish a secure and stable Wi-Fi network throughout your home. It incorporates Plume's Adaptive Home Wi-Fi technology, which intelligently optimizes network performance based on usage patterns.

As a SmartThings Hub, it enables connectivity and control for a wide range of smart devices, including lights, cameras, locks, thermostats, and sensors. Management and automation are accessible through the SmartThings app, Google Assistant, or Amazon Alexa voice commands.

This package includes three mesh routers, designed to cover areas up to 4,500 square feet. Additional units can be added for expanded coverage, supporting up to 32 hubs. The mesh network dynamically selects optimal channels and bands to minimize interference and buffering, ensuring a consistent connection.

Key Features:

- **Integrated Smart Home Solution:** Functions as both a mesh router and a SmartThings Hub, connecting over 100 compatible devices.
- **Extensive Coverage:** A 3-pack system provides up to 4,500 sq. ft. of Wi-Fi coverage, expandable with additional units.
- **Adaptive Wi-Fi Technology:** Powered by Plume, the system learns and optimizes network performance in real-time.
- **Unified App Control:** Manage devices, prioritize network access, set parental controls, and create schedules via the SmartThings app.
- **Content Filtering and Security:** Features for managing internet access and enhancing network security.
- **Simplified Setup:** Guided installation through the SmartThings app for quick network deployment.



Figure 1.1: Three Samsung SmartThings Mesh Routers, showing their compact, white, square design with rounded corners.



Figure 1.2: Rear view of three Samsung SmartThings Mesh Routers, highlighting the DC power input, IN (WAN) Ethernet port, OUT (LAN) Ethernet port, and a Reset button on each unit.

2. SETUP INSTRUCTIONS

Follow these steps to set up your Samsung ET-WV525KWEGUS Mesh Wi-Fi system.

2.1. Before You Begin

- Ensure you have a working internet connection from your Internet Service Provider (ISP).
- Download the latest SmartThings app on your smartphone (Android 5.0+ or iOS 10+).
- Unpack all components: three mesh routers, DC adapters, and LAN cables.

2.2. Initial Router Connection

1. **Connect the Main Router:**

- Connect one end of the provided LAN cable to the WAN (IN) port on one of the mesh routers.
- Connect the other end of the LAN cable to an available Ethernet port on your modem or existing router (if operating in bridge mode).
- Connect the DC adapter to the power port of this router and plug it into a power outlet.
- Wait for the router's LED indicator to show a blinking green and red light, indicating it's ready for setup.

2. **Open SmartThings App:**

- Launch the SmartThings app on your smartphone.
- The app should automatically detect the new SmartThings Wi-Fi device. Tap the "Add" button on the pop-up notification.
- Follow the on-screen instructions to configure your new Wi-Fi network name (SSID) and password.

2.3. **Adding Additional Mesh Routers**

3. **Position Additional Units:**

- Place the remaining mesh routers in locations that provide optimal coverage throughout your home, ensuring they are within range of another mesh unit.
- Connect each additional router to a power outlet using its DC adapter.

4. **Connect via SmartThings App:**

- In the SmartThings app, navigate to the "Add device" section.
- The app will detect the new mesh units. Follow the prompts to add them to your existing SmartThings Wi-Fi network.
- The system will automatically configure and optimize the network.

Whole home Wi-Fi coverage

SmartThings Wifi uses multiple access points, creating a fast, secure, and stable Wi-Fi network in whole home.



Actual coverage will vary based on home construction and layout

Figure 2.1: Diagram showing a multi-story house with three SmartThings Wi-Fi units strategically placed to provide seamless whole-home Wi-Fi coverage. Actual coverage may vary based on home construction.

Adaptive home Wi-Fi

Eliminate dead spots and buffering with mesh Wi-Fi coverage up to 4,500 square feet. Adaptive WiFi™ technology from Plume learns and improves in real-time, sending signal where it's needed most.



Figure 2.2: A family enjoying entertainment in a living room, with a Samsung SmartThings mesh router visible on a side table, symbolizing the elimination of dead spots and buffering through adaptive Wi-Fi technology.

3. OPERATING YOUR SMARTTHINGS WI-FI SYSTEM

The SmartThings Wi-Fi system offers comprehensive control over your network and smart home devices through the SmartThings app.

3.1. SmartThings App Functions

The SmartThings app is your central control panel for the mesh Wi-Fi and integrated SmartThings Hub. Key functionalities include:

- **Device Management:** View all connected devices, both Wi-Fi and SmartThings compatible.
- **Network Prioritization:** Assign priority to specific devices or applications for optimized performance.
- **Guest Network:** Create a separate Wi-Fi network for guests, providing secure access without compromising your main network.
- **Parental Controls:** Implement content filtering, set internet access schedules, and pause internet for specific devices or users.
- **Smart Home Automation:** Connect and control SmartThings compatible devices (lights, locks, sensors, cameras, etc.) and create automated routines.

- **Network Speed Test:** Monitor your internet speed directly from the app.

The brain of your smart home

SmartThings Wifi works as a SmartThings Hub to turn your home into a smart home. Connect and control a wide range of smart devices.

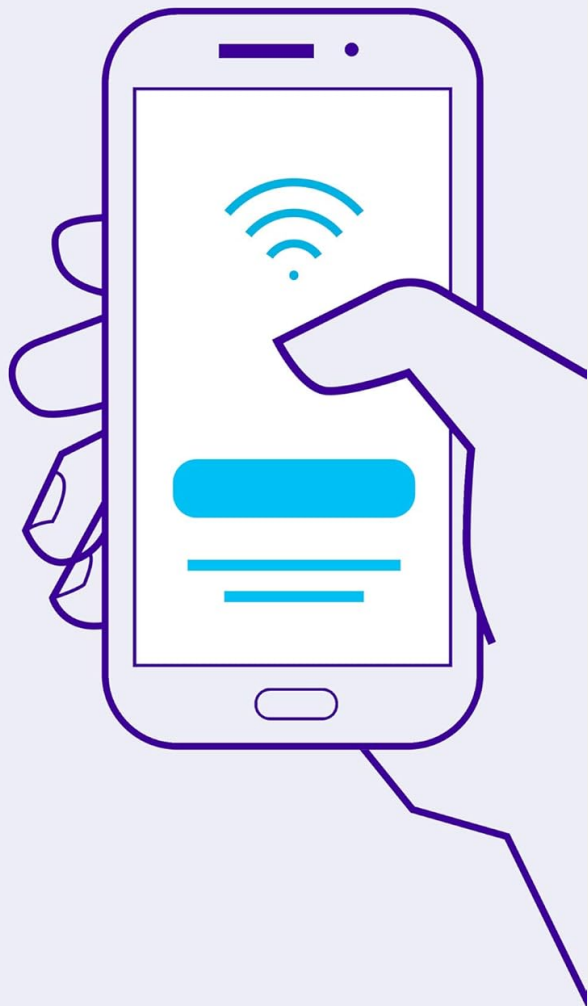


Figure 3.1: An illustration depicting a Samsung SmartThings mesh router at the center of various smart home devices, symbolizing its role as the central hub for controlling a wide range of connected devices.

One app to control it all.

SmartThings Wifi is simple to install and easy to use with the SmartThings App.

See what's connected, prioritize devices, create network access for guests, set up parental controls, set schedules, and more all from your smartphone.



Some features require additional Plume app download.

Figure 3.2: A hand holding a smartphone displaying the SmartThings app interface, illustrating how a single application provides comprehensive control over the Wi-Fi network and smart home devices.

3.2. Adaptive Wi-Fi by Plume

The system utilizes Plume's Adaptive Home Wi-Fi technology. This artificial intelligence-driven system continuously learns your network usage patterns and optimizes the Wi-Fi signal in real-time. It dynamically adjusts channels and bands to ensure the strongest possible connection, reducing interference and buffering.

3.3. Compatibility

The SmartThings Wi-Fi system is compatible with a wide range of smart home devices and platforms, including:

- Samsung SmartThings sensors and outlets (sold separately).
- Voice assistants like Google Assistant and Amazon Alexa.
- Various brands such as Bose, Schlage, Honeywell, Kwikset, Leviton, Ecobee, LIFX, Ring, Arlo, Yale, Philips Hue, and Lutron.

Note: This product is not compatible with Samsung Connect Home models ET-WV520KWEUGUS, ET-WV520BWEUGUS, and ET-WV530BWEUGUS. It is also not supported outside the U.S.

SmartThings works with a wide range of connected devices.

SAMSUNG

BOSE

SCHLAGE

Honeywell

Kwikset

LEVITON

ecobee

Google Home

amazon alexa

LIFX

ring

arlo

Yale

hue
PHILIPS

LUTRON

Figure 3.3: A collage of logos from various smart home brands, including Samsung, Bose, Schlage, Honeywell, Kwikset, Leviton, Ecobee, Google Home, Amazon Alexa, LIFX, Ring, Arlo, Yale, Philips Hue, and Lutron, indicating their compatibility with the SmartThings ecosystem.

4. MAINTENANCE

To ensure optimal performance and longevity of your Samsung SmartThings Wi-Fi system, consider the following maintenance guidelines:

- **Firmware Updates:** The SmartThings Wi-Fi system updates automatically. Ensure your devices are connected to the internet to receive the latest firmware, which includes performance enhancements and security patches.
- **Physical Placement:** Avoid placing units in enclosed spaces, near large metal objects, or other devices that emit strong electromagnetic interference (e.g., microwaves, cordless phones). Optimal placement ensures better signal propagation.
- **Cleaning:** Gently wipe the exterior of the units with a soft, dry cloth. Do not use liquid cleaners or abrasive materials.
- **Power Cycle:** If you experience network issues, a simple power cycle (unplugging the unit for 30 seconds and plugging it back in) can often resolve minor glitches.
- **App Updates:** Keep your SmartThings app updated to the latest version for access to new features and improved stability.

5. TROUBLESHOOTING

This section addresses common issues you might encounter with your SmartThings Wi-Fi system.

5.1. General Network Issues

- **No Internet Connection:**
 - Verify your modem is working correctly and has an active internet connection.
 - Ensure the Ethernet cable is securely connected from your modem to the WAN (IN) port of the main mesh router.
 - Power cycle your modem and the main mesh router.
- **Weak Wi-Fi Signal / Dead Spots:**
 - Relocate mesh units to more central positions, ensuring they are not too far from each other or obstructed by dense materials.
 - Check the SmartThings app for signal strength indicators for each unit.
- **Slow Internet Speed:**
 - Run a speed test from the SmartThings app.
 - Ensure no bandwidth-intensive activities are running on multiple devices simultaneously.
 - Check for any active parental controls or device prioritization settings that might be limiting speed for certain devices.

5.2. Device Connectivity Issues

- **Legacy Devices Not Connecting:**
 - The SmartThings Wi-Fi system uses a single SSID for both 2.4 GHz and 5 GHz bands. Some older devices may struggle to connect to a combined network.
 - Ensure the device's firmware is updated.
 - If possible, try connecting the device closer to a mesh unit to see if it prefers the 2.4 GHz band.
- **SmartThings Device Pairing Failure:**
 - Ensure the SmartThings device is within range of a mesh unit.
 - Check the device's battery level.
 - Follow the specific pairing instructions for the SmartThings device carefully.

5.3. App-Related Issues

- **SmartThings App Not Responding:**
 - Close and restart the app.
 - Ensure your smartphone's operating system and the SmartThings app are updated.
 - Clear the app cache (Android) or reinstall the app.

5.4. Factory Reset

If issues persist, you may need to perform a factory reset on your mesh units. This will erase all settings and return the device to its default state. Refer to the specific instructions for your model, usually involving pressing and holding the reset button for a specified duration.

6. SPECIFICATIONS

Brand	SAMSUNG
Model Name	ET-WV525KWEGUS
Part Number	ET-WV525KWEGUS
Connectivity Technology	Wi-Fi
Wireless Communication Standard	802.11ac
Frequency Band Class	Dual-Band
Coverage	Up to 4500 square feet (3-pack)
Item Weight	7.4 ounces (per unit)
Product Dimensions	4.72 x 4.72 x 1.16 inches (per unit)
Color	White
Power Source	AC
Voltage	100 Volts
Included Components	3 Routers, 3 DC Adapters, 3 LAN cables, Quick Start Guide
Special Features	WPS, SmartThings Hub Integration, Adaptive Wi-Fi (Plume)
Compatible Devices	Smartphone, SmartThings compatible devices, Google Assistant, Amazon Alexa

7. WARRANTY AND SUPPORT

7.1. Warranty Information

The Samsung ET-WV525KWEGUS Mesh Router comes with a **1-year manufacturer's warranty**. Please retain your proof of purchase for warranty claims. For detailed terms and conditions, refer to the warranty documentation included with your product or visit the official Samsung support website.

7.2. Customer Support

For further assistance, technical support, or to access the full user manual, please visit the official Samsung support website or contact Samsung customer service. You can also refer to the [User Manual \(PDF\)](#) for detailed information.