

AMOCAM M4-70N

AMOCAM M4-70N 7-inch Wired Video Intercom Door Phone System User Manual

Model: M4-70N | Brand: AMOCAM

1. PRODUCT OVERVIEW

The AMOCAM M4-70N Video Intercom Door Phone System provides enhanced security and convenience for homes, villas, offices, and apartments. This system includes a 7-inch indoor color monitor and an outdoor camera unit, enabling two-way communication, real-time monitoring, and remote unlocking of electric doors or gates.

The outdoor unit features a durable aluminum alloy panel, an integrated HD camera with IR LEDs for night vision, and waterproofing for reliable performance in various weather conditions. The indoor monitor offers a clear display, adjustable settings for brightness, volume, and contrast, and 16 selectable ringtones.



This image displays the complete AMOCAM video door phone system, featuring the indoor 7-inch monitor on the left and the outdoor camera unit with rain cover on the right.

2. PACKAGE CONTENTS

Please verify that all items listed below are included in your package:

- 1 x Indoor 7-Inch Color Monitor (with mounting bracket)
- 1 x Outdoor Camera Unit with Rain Cover
- 1 x Power Adapter
- 1 x Test Cable
- 1 x 4-Core Connection Cable
- 1 x 2-Core Connection Cable
- 1 x Bag of Screws
- 1 x User Manual (this document)

3. SPECIFICATIONS

Component	Specification
Indoor Monitor Screen	7 inch 16:9 LCD display, Touch key
Indoor Monitor Resolution	800 x 480
Indoor Monitor Ringtones	16-chord melody rings
Indoor Monitor Material	ABS

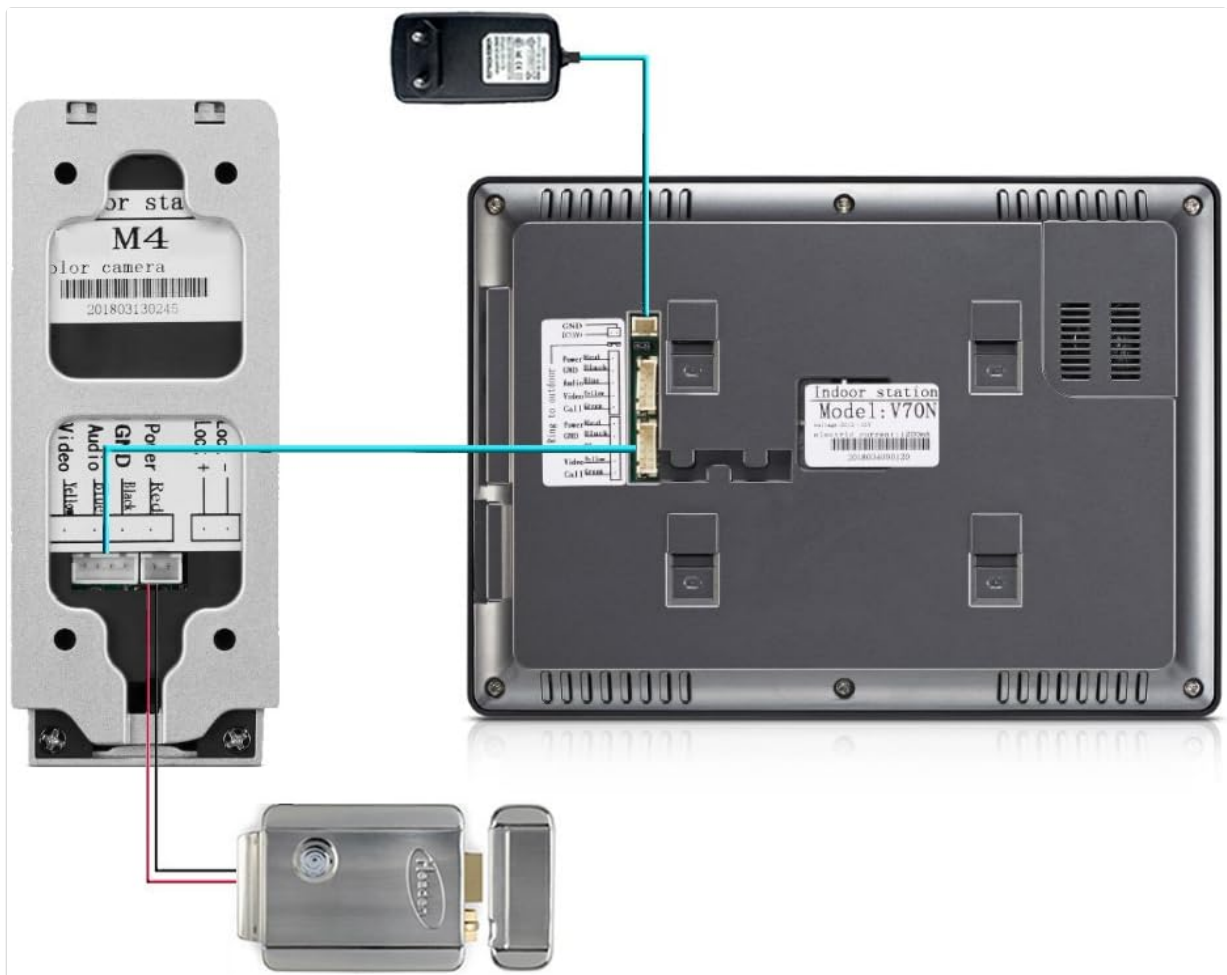
Component	Specification
Indoor Monitor Installation	Surface mounting
Input Voltage	AC 100-240V 50/60Hz
Working Voltage	DC 15V, 1.5A
Indoor Monitor Dimensions	240 x 150 x 20mm (9.4 x 5.9 x 0.7 inches)
Outdoor Camera Horizontal Resolution	700 TV-Lines
Outdoor Camera Image Sensor	Colorful CMOS sensor, 1/3 inch
Outdoor Camera Visual Angle	92 degrees
Outdoor Camera IR LEDs	4pcs, auto on/off
Outdoor Camera Material	Aluminum alloy / Acrylic
Outdoor Camera Installation	Surface mounting
Connection Type	Simple 4-wire connection
Outdoor Camera Dimensions	125 x 50 x 27 mm (4.9 x 1.9 x 1 inch)
Connectivity Protocol	Wired
Special Feature	Night Vision

4. SETUP AND INSTALLATION

This system is designed for surface mounting. Ensure all power is disconnected before beginning installation.

4.1 Outdoor Unit Installation

1. Choose a suitable location for the outdoor unit, typically near your main entrance, at a height that allows visitors to be clearly seen.
2. Detach the outdoor unit from its mounting bracket.
3. Secure the mounting bracket to the wall using the provided screws.
4. Connect the 4-core cable from the indoor monitor and any 2-core cables for electric locks to the outdoor unit's terminals as per the wiring diagram.
5. Attach the outdoor unit to the secured mounting bracket.



This image shows the outdoor camera unit separated from its mounting bracket, illustrating how it attaches for surface mounting.

4.2 Indoor Monitor Installation

1. Select a convenient indoor location for the monitor, such as a living room or kitchen wall.
2. Secure the indoor monitor's mounting bracket to the wall.
3. Connect the 4-core cable from the outdoor unit and the power adapter to the indoor monitor's terminals.
4. Mount the indoor monitor onto its bracket.

4.3 Wiring Diagram

Follow the wiring diagram carefully to ensure correct connections. Incorrect wiring can damage the system.



This comprehensive wiring diagram illustrates the connections required for the AMOCAM video intercom system, showing how the indoor monitor, outdoor unit, power adapter, and an optional electric lock are interconnected using 4-core and 2-core cables.

Note: For connecting electric bolt locks, electric strikes, or electric magnetic locks, an additional 'Power Supply Control' unit may be required (not included).

5. OPERATING INSTRUCTIONS

The indoor monitor provides intuitive controls for various functions.



This detailed view of the indoor monitor shows the various control buttons: Power Light, Ring Cancel, Ring Tone & Adjust, Monitor, Unlock, and Intercom, along with the Microphone.

5.1 Receiving a Call

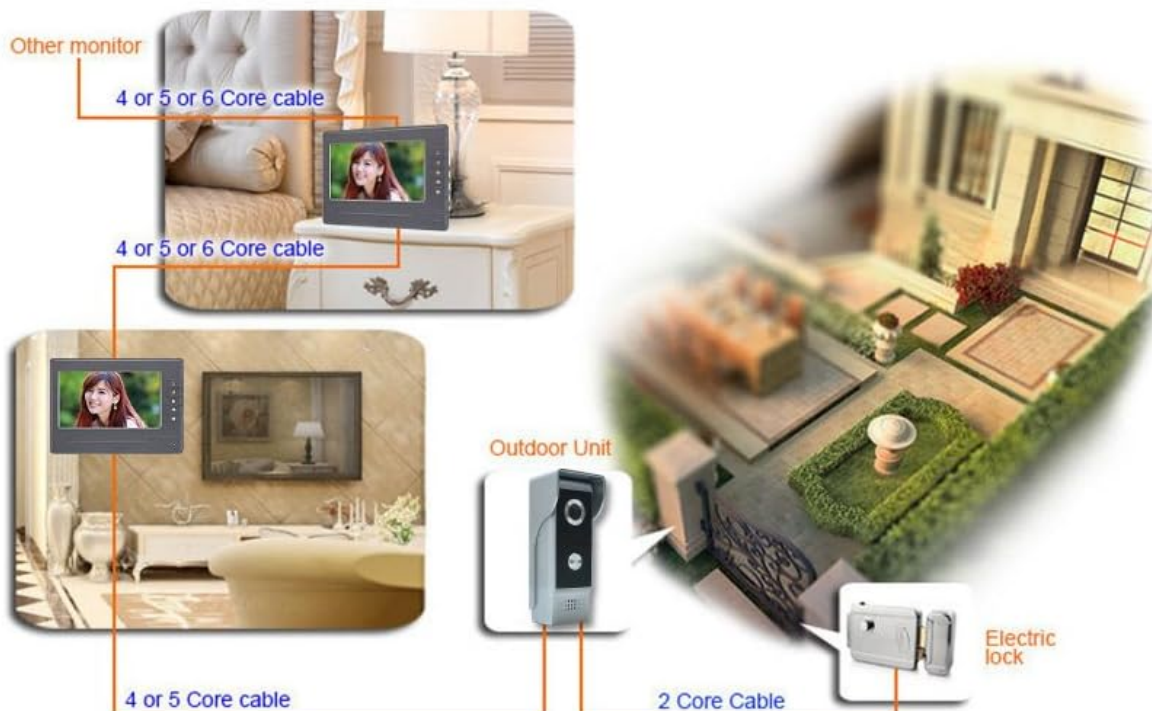
- When a visitor presses the call button on the outdoor unit, the indoor monitor will ring and display the visitor's image.
- Press the **Intercom** button to establish two-way audio communication with the visitor.
- To end the call, press the **Intercom** button again or wait for the call to automatically disconnect.

5.2 Monitoring Outdoor View

- To view the outdoor area at any time without a visitor call, press the **Monitor** button on the indoor unit.
- The screen will display the live feed from the outdoor camera.
- Press the **Monitor** button again to turn off the display.

See, Hear

It can function as a monitor.
Press the button of Response Monitoring, the screen will show you the picture outside doors, which makes you know the outside world staying in the house.



This diagram illustrates how the AMOCAM system allows users to monitor the outdoor environment from the indoor unit. It also shows the basic wiring connections between the indoor monitor, outdoor unit, and an optional electric lock.

5.3 Unlocking an Electric Lock

- If an electric lock is connected to the system, you can unlock it remotely.
- During a call or while monitoring the outdoor view, press the **Unlock** button on the indoor monitor.
- The connected electric lock will momentarily open.



One key to Monitor

Feeling the abnormal circumstance,
Hearing the unknown little sounds,
Worried about that, press the monitor
button, then you can check the situation
out of the door, Help you to protect your family



One Key to unlocking

See who is outside ,say why come here,then you
can press the unlocking button ,never worry about
the safety.



HI~



One key to Communication

Press the doorbell, the indoor monitor
will show the people outside of the
door, then you can know who is
outside at a glance: strangers or
guests. You can communicate with
hands-free, Clear timbre, High quality
sound system, High quality speaker.

This image highlights three primary functions of the system: monitoring the outdoor view, unlocking an electric door lock, and engaging in two-way communication with visitors.

5.4 Adjusting Settings

- Use the **Ring Tone & Adjust** button to cycle through the 16 available melody rings.
- Further adjustments for brightness, contrast, and volume can typically be found within the monitor's menu settings (refer to on-screen prompts if available).
- Press the **Ring Cancel** button to silence the current ringtone.

6. MAINTENANCE

Regular maintenance ensures optimal performance and longevity of your video intercom system.

- **Cleaning:** Use a soft, dry cloth to clean the indoor monitor screen and buttons. For the outdoor unit, gently wipe the camera lens and call button with a damp cloth. Avoid abrasive cleaners or solvents.
- **Outdoor Unit Protection:** Ensure the rain cover on the outdoor unit is free from obstructions and properly positioned to protect against weather elements.
- **Cable Inspection:** Periodically check all connection cables for any signs of wear, damage, or loose connections.
- **Power Supply:** Ensure the power adapter is securely connected and not exposed to moisture.

7. TROUBLESHOOTING

If you encounter issues with your AMOCAM M4-70N system, refer to the following common problems and solutions:

- **No Image on Indoor Monitor:**

- Check if the power adapter is properly connected and the monitor is receiving power.
- Verify that the 4-core connection cable between the indoor and outdoor units is securely connected at both ends.
- Ensure the outdoor camera lens is clean and unobstructed.

- **No Sound or Poor Audio Quality:**

- Check the volume settings on the indoor monitor.
- Inspect the 4-core cable for damage or loose connections, as it carries audio signals.
- Ensure the microphones and speakers on both units are not blocked.

- **Outdoor Unit Not Calling Indoor Monitor:**

- Confirm the call button on the outdoor unit is functioning correctly (e.g., it clicks when pressed).
- Recheck the 4-core wiring for proper connection.

- **Electric Lock Not Unlocking:**

- Ensure the electric lock is compatible and correctly wired to the system using the 2-core cable.
- Verify that an external 'Power Supply Control' unit is used if required by your specific electric lock type.
- Check the 2-core cable for damage or loose connections.

If these steps do not resolve the issue, please contact AMOCAM customer support for further assistance.

8. WARRANTY AND SUPPORT

AMOCAM products are manufactured to high-quality standards. For warranty information and customer support, please refer to the documentation provided at the time of purchase or visit the official AMOCAM website. Keep your purchase receipt as proof of purchase for warranty claims.