

Wiltec 60706

Wiltec Galvanized Steel Wire Mesh Roll Instruction Manual

Model: 60706 | Dimensions: 100cm x 10m | Mesh Size: 12x12mm | Wire Thickness: 0.7mm

1. INTRODUCTION

Thank you for choosing the Wiltec Galvanized Steel Wire Mesh. This manual provides essential information for the safe and effective use of your product. Please read these instructions carefully before installation and retain them for future reference.

2. SAFETY INFORMATION

- Always wear appropriate personal protective equipment (PPE), including gloves and eye protection, when handling the wire mesh to prevent cuts or abrasions.
- Use suitable cutting tools, such as wire cutters or tin snips, for cutting the mesh. Ensure tools are sharp and in good condition.
- Be aware of sharp edges after cutting. File or bend sharp ends to prevent injury.
- Keep children and pets away from the work area during installation.
- Ensure the mesh is securely fastened to prevent collapse or injury, especially when used for enclosures.

3. PRODUCT OVERVIEW

The Wiltec Galvanized Steel Wire Mesh is a versatile and durable product designed for various applications. It features a weather-resistant galvanized steel construction, ensuring longevity and resistance to corrosion.

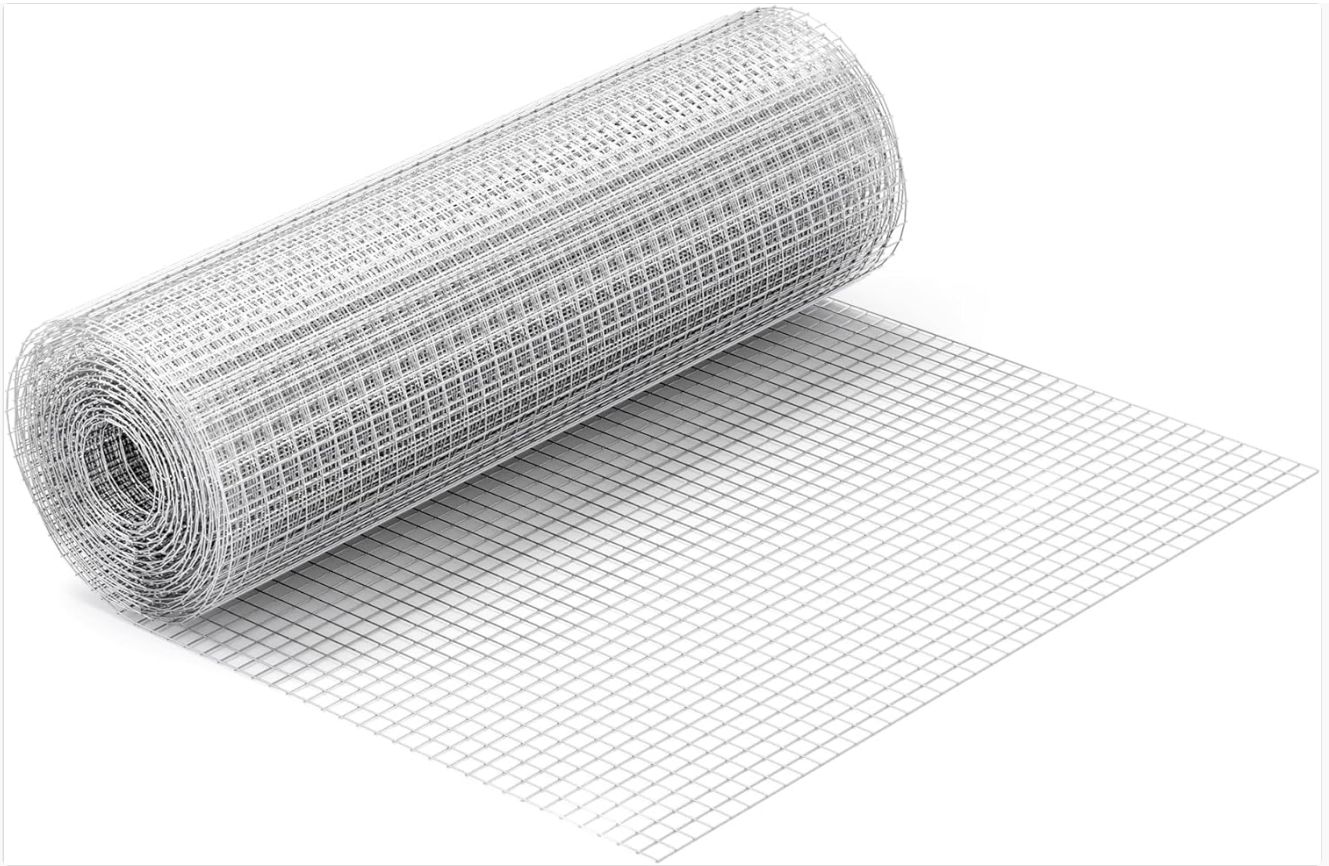


Image 3.1: A roll of Wiltec galvanized steel wire mesh, partially unrolled to show the square mesh pattern.

Key Features:

- **Material:** Galvanized Steel Alloy
- **Dimensions:** 1 meter (height) x 10 meters (length)
- **Wire Thickness:** 0.7 mm
- **Mesh Size:** 12 x 12 mm
- **Durability:** Weather-resistant, anti-rust, and anti-corrosion properties.
- **Workability:** Easy to cut and shape for various applications.

Vantaggi

Wiltec



Robusto acciaio galvanizzato



Antiruggine e anticorrosione

Gli altri



Materiale meno robusto



Meno durevole e resistente

Image 3.2: Visual comparison highlighting the advantages of Wiltec's robust galvanized steel mesh against less durable alternatives.

4. SPECIFICATIONS

Specification	Detail
Manufacturer	Wiltec
Item Code	60706
Product Dimensions (L x W x H)	1000 x 0.14 x 100 cm
Model Number	60706
Overall Dimensions	100cm x 10m / 12x12mm
Color	Galvanized (Silver)

Specification	Detail
Material	Steel Alloy
Number of Items	1
Item Weight	4.86 Kilograms
Batteries Included/Required	No
ASIN	B07F5XZX47
First Available Date	July 9, 2018

Dimensioni del prodotto

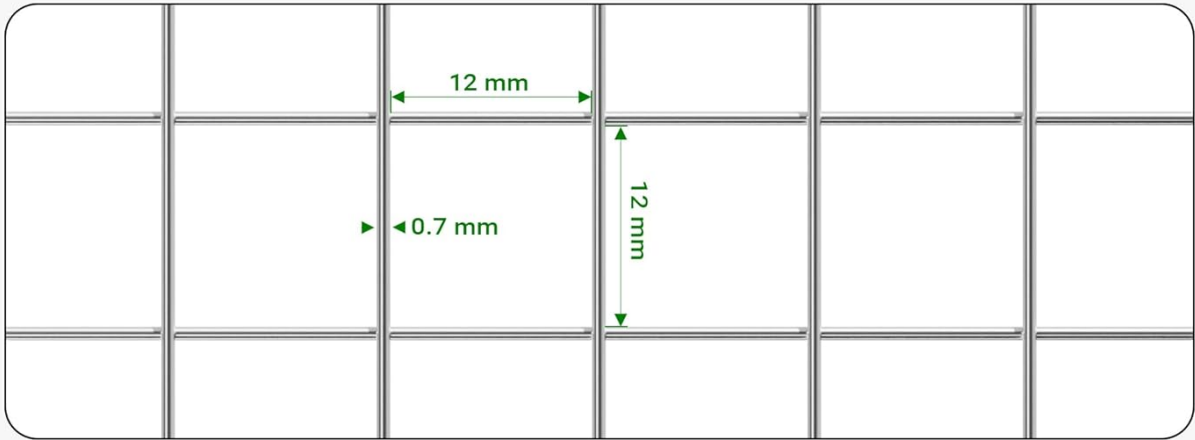
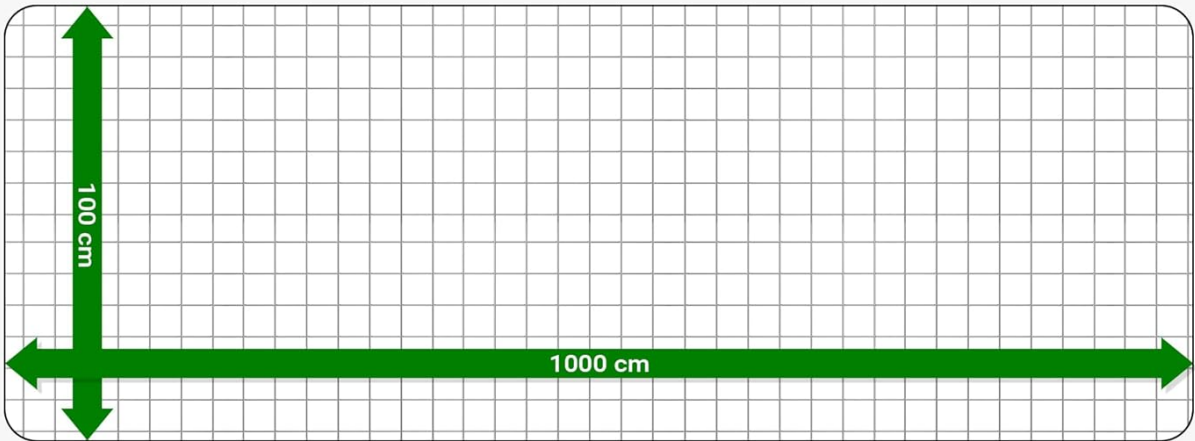


Image 4.1: Detailed diagram illustrating the overall dimensions (100cm x 1000cm) and individual mesh size (12mm x 12mm) with a wire thickness of 0.7mm.

Disponibile in diverse misure


SKU	Forma delle maglie	Dimensioni della rete (mm)	Spessore del filo (mm)	Dimensioni (m)
62468	 Quadrato	12 x 12	0.7	1 x 5
62469				0.5 x 10
62470				0.5 x 25
62471				0.5 x 5
60709				1 x 25
60706				1 x 10
60710		16 x 16	0.75	1 x 25
60711		19 x 19		1 x 25
62473				0.5 x 10
62474				0.5 x 25
62475				0.5 x 5
62472				1 x 5
60707			1 x 10	
62476		25 x 25	1.2	1 x 5
62477				0.5 x 10
62478				0.5 x 25
62479				0.5 x 5
60708				1 x 10
60712	1 x 25			
Disponibile in nero, verde e argentato				

Image 4.2: A table displaying various available mesh sizes, wire thicknesses, and roll dimensions for different Wiltec wire mesh products.

5. SETUP AND INSTALLATION

5.1 Unrolling the Mesh

1. Place the rolled mesh on a flat, clean surface.
2. Carefully unroll the desired length, ensuring it lays flat to avoid kinks.

5.2 Cutting the Mesh

1. Measure the required length and width for your application.
2. Using appropriate wire cutters or tin snips, carefully cut along the desired lines. Ensure cuts are clean to minimize sharp protrusions.
3. After cutting, inspect the edges for any sharp points and use a file or pliers to smooth them down or bend them away from potential contact areas.

Facile da tagliare in varie forme

Ideale per ogni esigenza

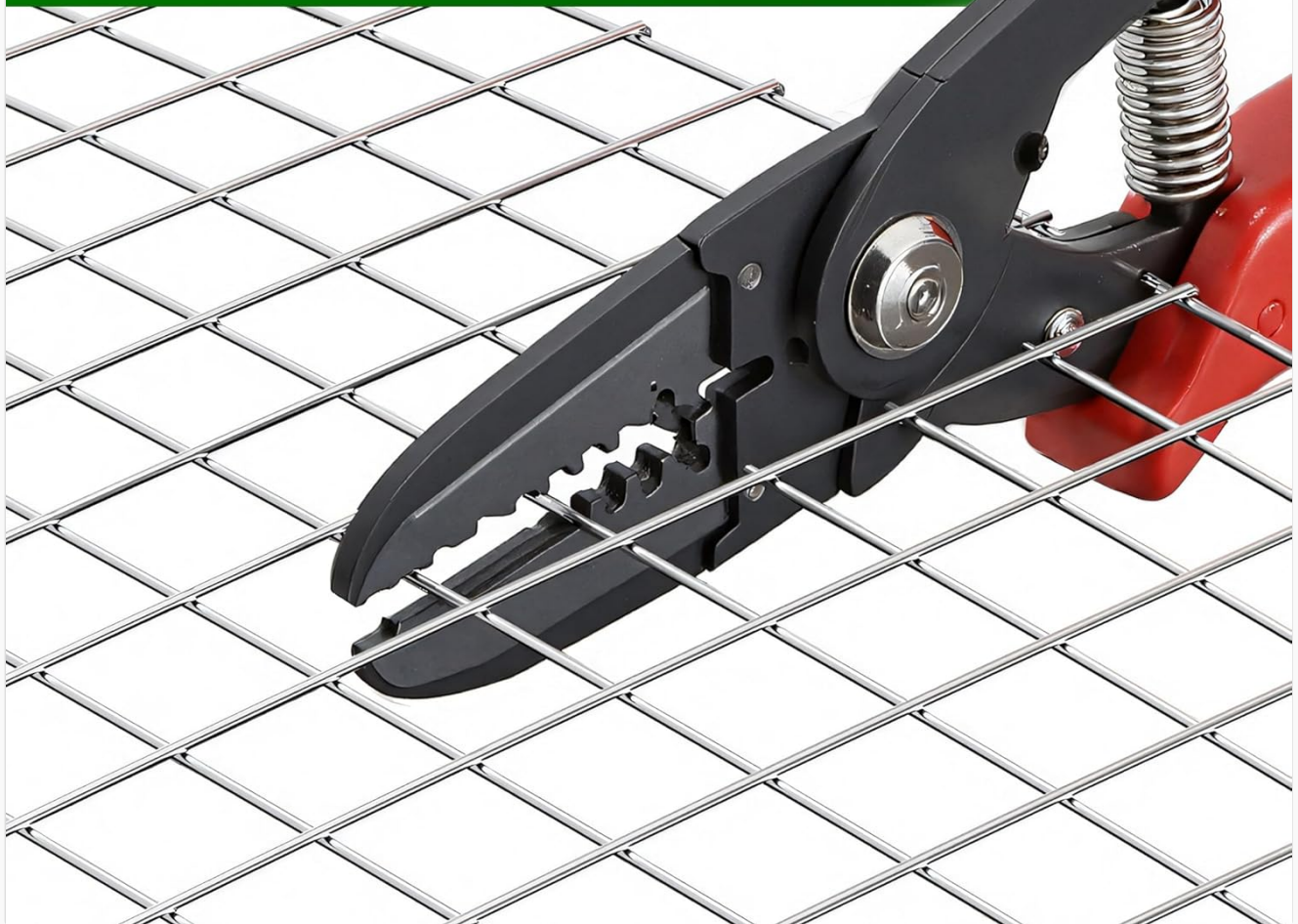


Image 5.1: Close-up of wire mesh being cut with a pair of pliers, demonstrating the ease of shaping the material.

5.3 Securing the Mesh

1. Depending on the application, secure the mesh using appropriate fasteners such as zip ties, wire, staples, or U-nails.
2. For fencing or enclosures, ensure posts are firmly set and the mesh is tautly attached to prevent sagging.

6. OPERATING AND USAGE

The Wiltec Galvanized Steel Wire Mesh is suitable for a wide range of applications:

- **Aviaries and Pet Enclosures:** Create secure and safe spaces for birds, rabbits, chickens, and other small animals. The small mesh size helps prevent escape and protects against predators.
- **Garden Fencing:** Protect garden beds, plants, and crops from pests and small animals.
- **Tree Protection:** Wrap around young trees to shield them from rodents and other wildlife.
- **General Fencing:** Use for property boundaries or temporary barriers.

- **DIY Projects:** Adaptable for various craft and construction projects requiring a durable mesh material.

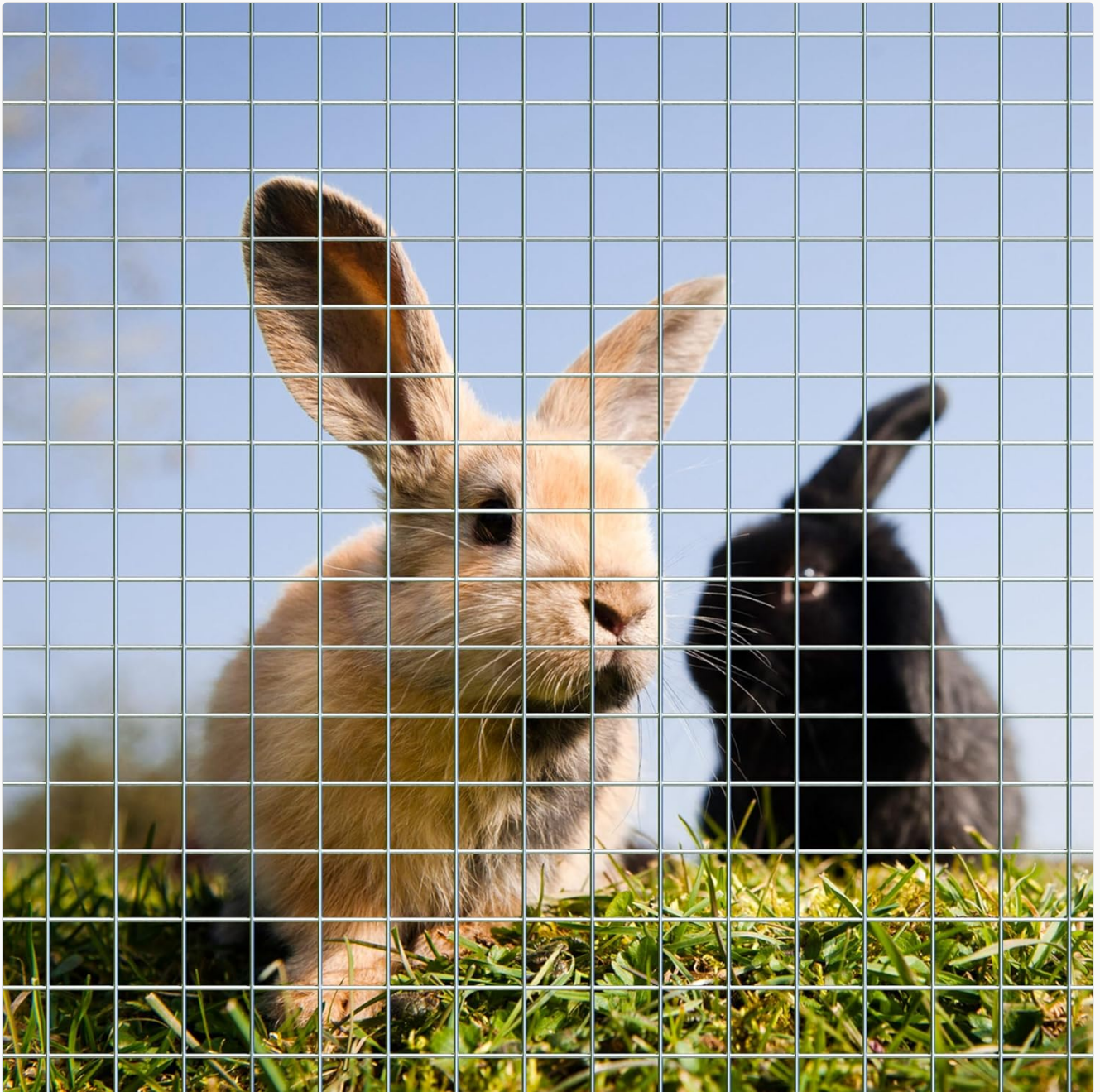


Image 6.1: Two rabbits safely enclosed behind a wire mesh fence, demonstrating its use for pet containment.

Protegete gli animali domestici da altri animali



Image 6.2: A group of chicks in an outdoor enclosure made from wire mesh, illustrating protection from common predators like raccoons, foxes, badgers, and weasels.

Ideale per un'ampia gamma di applicazioni



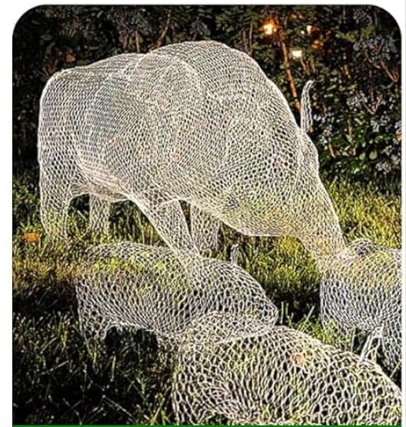
Recinzione per animali domestici



Protezione degli alberi



Orto



Fai da te

Image 6.3: Collage showing diverse applications including pet enclosures, tree protection, garden beds, and decorative DIY projects.

7. MAINTENANCE

The galvanized steel construction of this mesh provides excellent resistance to rust and corrosion, requiring minimal maintenance.

- **Regular Inspection:** Periodically check the mesh for any damage, loose fastenings, or sharp edges, especially after severe weather conditions.
- **Cleaning:** If necessary, clean the mesh with water and a mild detergent. Avoid abrasive cleaners or harsh chemicals that could damage the galvanization.
- **Repair:** Small areas of damage can often be repaired by weaving in new wire or using wire ties. For larger damages, consider replacing the section.

8. TROUBLESHOOTING

8.1 Mesh Sagging

- **Cause:** Insufficient tension during installation or inadequate support.
- **Solution:** Ensure the mesh is pulled taut when fastening. Add more support posts or tensioning wires if needed.

8.2 Difficulty Cutting

- **Cause:** Using dull or incorrect tools.
- **Solution:** Use sharp, heavy-duty wire cutters or tin snips. For thicker wires, bolt cutters may be required (though not typically for this product's 0.7mm wire).

8.3 Rust Spots Appearing

- **Cause:** Damage to the galvanized coating, prolonged exposure to corrosive substances, or severe environmental conditions.
- **Solution:** Clean the affected area and apply a cold galvanizing spray or rust-inhibiting paint to protect the exposed steel.

9. WARRANTY AND SUPPORT



For warranty information or technical support, please refer to the official Wiltec website or contact your retailer. Keep your purchase receipt as proof of purchase.

Manufacturer: Wiltec Wildanger Technik GmbH

Website: www.wiltec.de (General Wiltec website, specific support contact may vary by region)

© 2023 Wiltec. All rights reserved.

Related Documents - 60706

<p>Operating Instructions Petrol Brushcutter with Wheels</p> <p>wiltec</p>  <p><small>Please read carefully the operating instructions and safety instructions to avoid accidents. Before using, always read the operating instructions and safety instructions. The Wiltec Group is not responsible for any damage caused by the use of the product.</small></p>	<p><u>Wiltec Petrol Brushcutter with Wheels Operating Instructions and Safety Guide</u></p> <p>Comprehensive operating instructions and safety guide for the Wiltec Petrol Brushcutter with Wheels (Model 64746). Covers proper use, maintenance, troubleshooting, and safety precautions for safe and effective operation.</p>
<p>Mode d'emploi Pompe submersible</p> <p>wiltec</p>  <p><small>Il est très important de lire attentivement les instructions d'utilisation avant d'utiliser le produit. Avant d'utiliser le produit, lisez attentivement les instructions d'utilisation et les consignes de sécurité. Le Groupe Wiltec ne sera pas responsable des dommages causés par l'utilisation du produit.</small></p>	<p><u>Wiltec Submersible Pump 65336-65343 User Manual</u></p> <p>Comprehensive user manual for the Wiltec submersible pump (models 65336-65343), covering operation, safety instructions, technical specifications, maintenance, and troubleshooting.</p>



Detailed operation and safety guide for the WilTec 65044 submersible pump (400W, 6000 l/h). Covers installation, maintenance, troubleshooting, and disposal for this cellar/basement water pump.



Detailed assembly instructions for the WilTec 60120-60123 balcony railing, including a comprehensive parts list, dimensions for various configurations, and step-by-step guidance.



Scopri come utilizzare al meglio la tua mini-incubatrice Wiltec per 12 uova (modello 52016) con questo manuale d'uso completo. Include istruzioni dettagliate, consigli per l'incubazione e risoluzione problemi.

Este manual proporciona instrucciones detalladas para el uso seguro y eficiente del compresor de aerógrafo WilTec AF189 (Artículo 34205), incluyendo pautas de seguridad, especificaciones técnicas, manejo de la estación reductora, lista de piezas y normativas de conformidad.