

Amazon Echo Sub

Amazon Echo Sub Instruction Manual

Model: Echo Sub

[Overview](#) [Setup](#) [Operating](#) [Maintenance](#) [Troubleshooting](#) [Specifications](#)

1. PRODUCT OVERVIEW

The Amazon Echo Sub is a powerful subwoofer designed to enhance the audio experience of your compatible Echo devices. It delivers deep, rich bass, adding a new dimension to your music and entertainment.

- **Deep Bass Sound:** Features a down-firing, 100W deep bass sound through a 6-inch woofer.
- **Enhanced Audio:** Pair with one Echo or Echo Plus (sold separately) for dynamic, room-filling music.
- **Stereo Sound:** Combine with two identical Echo devices for a rich left/right stereo sound experience.
- **Seamless Integration:** Designed for simple setup and wireless connection via the Alexa app.

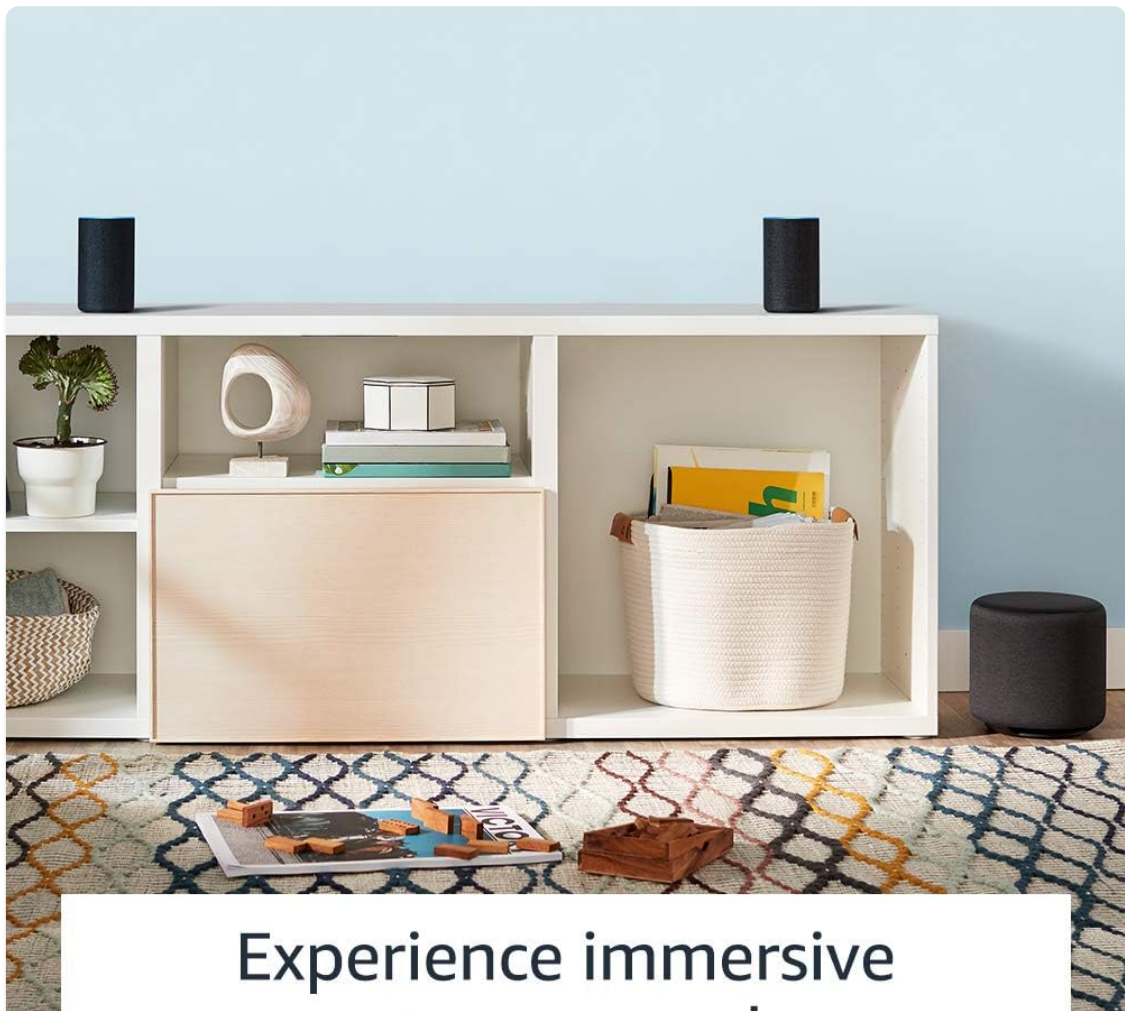


Figure 1: The Amazon Echo Sub, a cylindrical charcoal-colored subwoofer designed to provide deep bass.

2. SETUP INSTRUCTIONS

Setting up your Echo Sub is a straightforward process. Ensure you have a compatible Echo device and the Alexa app installed on your smartphone or tablet.

1. **Placement:** Place your Echo Sub on the floor in a suitable location, ideally near your primary listening area and compatible Echo device(s). Ensure it has access to a power outlet.
2. **Power On:** Plug the power cable into the Echo Sub and then into a wall outlet. The indicator light will illuminate.
3. **Open Alexa App:** Launch the Alexa app on your mobile device.
4. **Add Device:** In the Alexa app, navigate to the "Devices" section. Tap the "+" icon in the top right corner and select "Add Device."
5. **Select Amazon Echo:** Choose "Amazon Echo" from the list of device types, then select "Echo Sub."
6. **Follow On-Screen Prompts:** The app will guide you through connecting the Echo Sub to your Wi-Fi network and pairing it with your existing Echo device(s).
7. **Network Compatibility:** Ensure all your Echo devices, including the Echo Sub, are connected to the **exact same Wi-Fi network and frequency band (e.g., 2.4 GHz or 5 GHz)** for optimal performance and pairing. Inconsistent network connections can prevent successful pairing.



Experience immersive stereo sound

Figure 2: Example setup showing the Echo Sub paired with two Echo devices for an immersive stereo sound experience.

3. OPERATING YOUR ECHO SUB

Once set up, the Echo Sub operates in conjunction with your paired Echo device(s). All controls are managed through the Alexa app or voice commands to your Echo device.

3.1 Adjusting Bass Levels

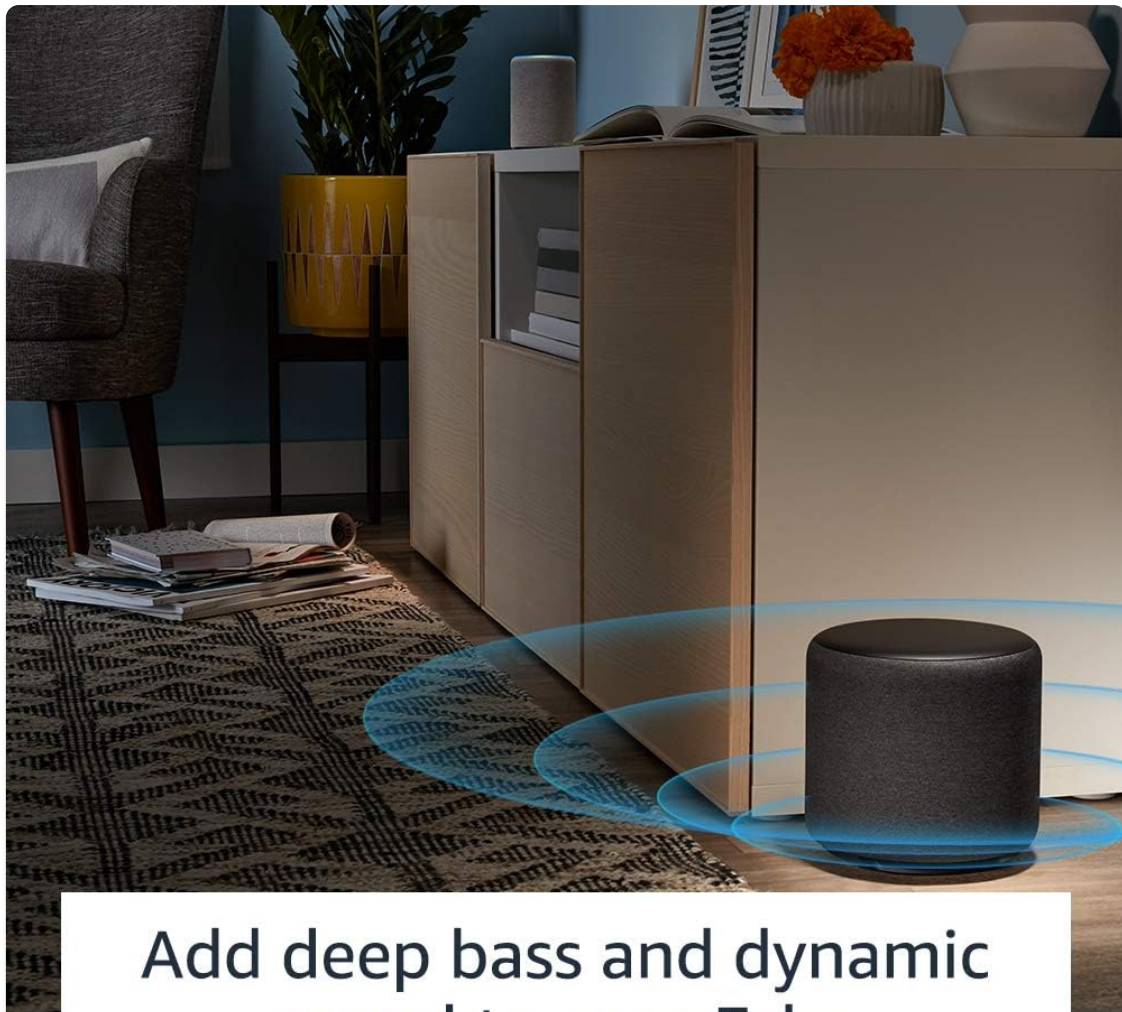
You can fine-tune the bass output of your Echo Sub through the Alexa app:

1. Open the Alexa app.
2. Go to "Devices."
3. Select your paired Echo device or speaker group.
4. Tap on "Audio Settings" or "Equalizer."
5. Adjust the bass slider to your preferred level.

3.2 Voice Control

Control music playback, volume, and other functions using voice commands directed at your paired Echo device. The Echo Sub will automatically adjust its output based on the audio played through the Echo device.

Note: Alexa Voice Service is currently available only in English.



Add deep bass and dynamic sound to your Echo

Figure 3: The Echo Sub enhancing audio with deep bass, represented by blue sound waves.

4. MAINTENANCE

The Echo Sub requires minimal maintenance to ensure optimal performance and longevity.

- **Cleaning:** Use a soft, dry, lint-free cloth to gently wipe the exterior of the Echo Sub. Avoid using abrasive cleaners, solvents, or spray cleaners directly on the device.
- **Ventilation:** Ensure the subwoofer's vents are not obstructed to prevent overheating. Maintain adequate space around the device for proper airflow.
- **Environment:** Keep the Echo Sub away from direct sunlight, heat sources, and moisture. Do not expose it to liquids.

5. TROUBLESHOOTING

If you encounter issues with your Echo Sub, try the following troubleshooting steps:

5.1 No Sound or Intermittent Audio

- **Power Check:** Ensure the Echo Sub is properly plugged into a working power outlet.
- **Alexa App:** Verify that the Echo Sub is correctly paired with your Echo device(s) in the Alexa

app.

- **Network Connection:** Confirm that both the Echo Sub and its paired Echo device(s) are connected to the same Wi-Fi network and frequency band (2.4 GHz or 5 GHz). Inconsistent network settings are a common cause of pairing issues.
- **Restart Devices:** Unplug the Echo Sub and your paired Echo device(s) from power for 30 seconds, then plug them back in.
- **Volume Levels:** Check the volume settings in the Alexa app and on your paired Echo device.

5.2 Pairing Issues

- **Reset Pairing:** In the Alexa app, try unpairing and then re-pairing the Echo Sub with your Echo device(s).
- **Factory Reset (Sub):** To factory reset the Echo Sub, press and hold the Action button (the small circle button) on the back of the device for 20 seconds. The light ring will pulse orange, then turn blue. Release the button. The light ring will then turn orange, indicating it's ready for setup.
- **App Update:** Ensure your Alexa app is updated to the latest version.

5.3 Distorted Sound

- **Bass Level:** Reduce the bass level in the Alexa app's audio settings.
- **Placement:** Ensure the Echo Sub is not vibrating against other objects.
- **Source Quality:** Check if the audio source (music service, podcast) is of high quality.

6. SPECIFICATIONS

Feature	Detail
Model Name	Echo Sub
Woofer Size	6 inches
Power Output	100W
Audio Type	Down-firing subwoofer
Connectivity	Wireless (Wi-Fi)
Compatibility	Compatible with select Echo devices (Echo, Echo Plus)
Color	Charcoal

7. WARRANTY INFORMATION

For detailed warranty information regarding your Amazon Echo Sub, please refer to the warranty documentation included with your product packaging or visit the official Amazon Device Support website. Warranty terms typically cover defects in materials and workmanship under normal use.

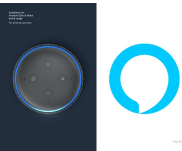




8. CUSTOMER SUPPORT

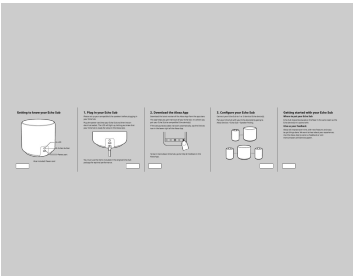
If you require further assistance or have questions not covered in this manual, please contact Amazon Customer Service:

- **Online Support:** Visit the [Amazon Device Support](#) page.
- **Contact Options:** The support page provides options for chat, email, or phone support.

© 2025 Amazon. All rights reserved. Amazon, Echo, Alexa, and all related logos are trademarks of Amazon.com, Inc. or its affiliates.

Related Documents - Echo Sub

	<p>Amazon Echo & Alexa Brand Usage Guidelines for External Partners</p> <p>Official guidelines for external partners on the proper usage of Amazon Echo and Alexa brand assets, including logos, typography, colors, and representation in marketing materials. Ensure brand consistency and integrity.</p>
	<p>Amazon Echo & Alexa Brand Usage Guidelines for Third-Party Marketers</p> <p>Comprehensive guidelines for third-party marketers on the correct usage of Amazon Echo and Alexa brand assets, including logos, voice, messaging, and product representation, to ensure brand consistency and integrity.</p>
	<p>Amazon Alexa for Business Administration Guide: Setup, Management, and Features</p> <p>This administration guide provides comprehensive instructions for setting up, managing, and utilizing Amazon Alexa for Business. It covers device management, user enrollment, skill integration, security, and troubleshooting for enterprise environments.</p>
	<p>Amazon Echo User Guide: Mastering Basic Uses</p> <p>Learn to use your Amazon Echo device with this comprehensive user guide. Covers basic functions, voice commands with Alexa, device settings, and common tasks for Echo Show and other Amazon Echo models.</p>
	<p>Amazon Echo Show 8 (2nd Gen) User Guide</p> <p>A comprehensive user guide for the Amazon Echo Show 8 (2nd Gen), detailing setup, privacy features, voice commands, and tips for using Alexa.</p>

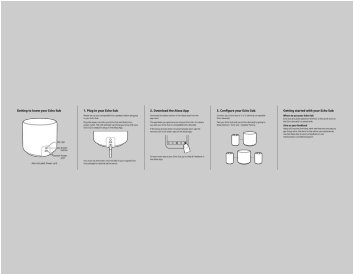


[pdf] Quick Start Guide Guide

22 001480 03 PABL QSG INTL S4 EN Online Echo Sub Quick Start Guide Guides for Alexa Enabled Devices Amazon Customer Service d1ergij2b6wmg5 cloudfront net |||

...

lang:en score:26 filesize: 257.79 K page_count: 1 document date: 2018-10-17



[pdf] Quick Start Guide Documentation Guide

22 001438 05 PABL QSG WSL US S3 Online Echo Sub Quick Start Guide Guides for Alexa Enabled Devices Amazon Customer Service s3 us west 2 amazonaws customerdocumentation |||

...

lang:en score:25 filesize: 204.73 K page_count: 1 document date: 2018-09-27



Amazon Fire TV User Manual: Setup, Features, and Troubleshooting Guide

Comprehensive user manual for Amazon Fire TV 4-Series, Omni Series, and Omni QLED Series smart TVs. Provides detailed instructions on setup, connecting devices, navigating features, and troubleshooting common issues.

lang:en score:24 filesize: 3.57 M page_count: 107 document date: 2022-10-31



[pdf] Instructions Warranty

Jessica Maguire One Year Limited Warranty for Amazon Devices Device and you follow the instructions returning we will at our option to extent permitted by law either i repair using 000000000000000000 gpb1

112 editorial content s3 amazonaws

One-Year Limited Warranty for Amazon Devices Amazon Devices Covered by this One-Year Limited Warrant ... d Generation , Echo Show 5, Echo Show 8, Echo Spot, Echo Loop, Echo Connect, Amazon Tap, Echo Auto, **Echo Sub**, Echo Link, Echo Link Amp, Echo Loop, Echo Studio, Echo Buds, Echo Frames, AmazonBasics Mic...

lang:en score:23 filesize: 110.26 K page_count: 2 document date: 2019-10-29



[Amazon Fire TV User Manual: 4-Series, Omni, and Omni QLED Series](#)

Comprehensive user manual for Amazon Fire TV smart televisions, covering setup, features, settings, and troubleshooting for 4-Series, Omni Series, and Omni QLED Series models.

lang:en score:22 filesize: 3.76 M page_count: 108 document date: 2023-03-09

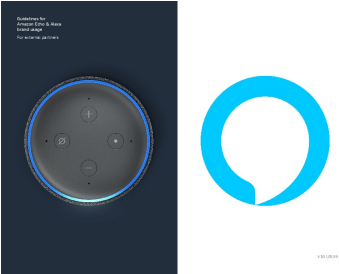


[\[pdf\] User Manual Installation Guide](#)

Provided by ManualsAndMore Download User Manual Qaio The Smarter Mirror Installation manualsandmore |||

TM INSTALLATION MANUAL Table of Contents Installation Mirror Light Controls How to adjust settings o ... them, otherwise, click SKIP . Setup Choose a device to set up Echo Echo Dot Echo Plus Amazon Tap **Echo Sub** Accessories SKIP STEP 4 In order for Alexa to assist you better, it will ask for permissi...

lang:en score:19 filesize: 2.6 M page_count: 15 document date: 2019-07-24



[Amazon Echo & Alexa Brand Usage Guidelines for External Partners](#)

Official guidelines for external partners on the proper usage of Amazon Echo and Alexa brand assets, including logos, typography, colors, and representation in marketing materials. Ensure brand consistency and integrity.

lang:en score:17 filesize: 4.82 M page_count: 48 document date: 2019-01-31



[pdf]

AIG JAPAN TsCs Echo Japanese 20180918 CB1537329978 m media amazon images G 09 ||| Amazon <http://www.amazon.co.jp> amazon.co.jp Amazon 2012 10 24 amazon.co.jp Amazon 30 ... 1 5. Amazon Echo Dot, Amazon Echo, Amazon Echo Plus, Amazon Echo Spot, Echo Show, **Echo Sub**, Echo Input amazon.co.jp Amazon 61 TEL0120-899-090 24 Amazon, Echo Ama...

lang:i-klinton **score:13** filesize: 231.04 K page_count: 2 document date: 2019-03-27



[pdf]

AIG JAPAN TsCs Echo Japanese 20190910 CB1198675309 m media amazon images G 09 ||| Amazon <http://www.amazon.co.jp> amazon.co.jp Amazon 2012 10 24 amazon.co.jp Amazon 30 ... 1 5. Amazon Echo Dot, Amazon Echo, Amazon Echo Plus, Amazon Echo Spot, Echo Show, Echo Show 5, **Echo Sub**, Echo Input, Echo Link, Echo Link Amp, Echo Dot with clock, Echo Flex, Echo Studio amazon.c...

lang:i-klinton **score:13** filesize: 231.67 K page_count: 2 document date: 2019-09-11



[pdf] Accessories

AIG JAPAN TsCs EchoAmazon Legal m media amazon images G 09 Scarlet Accessories Japan Echo ||| Amazon <http://www.amazon.co.jp> amazon.co.jp Amazon 2012 10 24 amazon.co.jp Amazon 30 ... on Echo, Amazon Echo Plus, Amazon Echo Spot, Echo, Echo Dot, Echo Show 5,Echo Show 8, Echo Show 10, **Echo Sub**, Echo Input, Echo Link, Echo Link Amp, Echo Dot with clock, Echo Flex, Echo Studio, Echo Au...

lang:i-klinton **score:13** filesize: 231.77 K page_count: 2 document date: 2020-09-10



[pdf]

AIG JAPAN TsCs EchoAmazon Legal m media amazon images G 09 kindle merch 2022 AUCC 4830683 5 |||

Amazon <http://www.amazon.co.jp> amazon.co.jp Amazon 2012 10 24 amazon.co.jp

Amazon 30 ... on Echo, Amazon Echo Plus, Amazon Echo Spot, Echo Dot, Echo,

Echo Show 5,Echo Show 8, Echo Show 10, **Echo Sub**, Echo Input, Echo Link, Echo

Link Amp, Echo Dot with clock, Echo Flex, Echo Studio, Echo Au...

lang:i-klinton **score:13** filesize: 226.52 K page_count: 2 document date: 2021-03-31



[pdf]

AIG JAPAN TsCs EchoAmazon Legal 20230821 m media amazon images G 09 kindle dp 2023 AUCC 3958575 |||

Amazon <http://www.amazon.co.jp> amazon.co.jp Amazon 2012 10 24 amazon.co.jp

Amazon 30 ... on Echo, Amazon Echo Plus, Amazon Echo Spot, Echo Dot, Echo,

Echo Show 5,Echo Show 8, Echo Show 10, **Echo Sub**, Echo Input, Echo Link, Echo

Link Amp, Echo Dot with clock, Echo Flex, Echo Studio, Echo Au...

lang:i-klinton **score:13** filesize: 244.47 K page_count: 2 document date: 2023-05-29



[pdf]

Warranty Accessories
AIG JAPAN Echo TC JP Japanese CB1580247949 m media amazon images G 01 kindle merch accessories warranty SquareTrade |||

Amazon <http://www.amazon.co.jp> amazon.co.jp Amazon 2012 10 24 amazon.co.jp

Amazon 30 ... azon Echo Dot, Amazon Echo, Amazon Echo Plus, Amazon Echo

Spot, Echo Show, Echo Show 5,Echo Show 8, **Echo Sub**, Echo Input, Echo Link,

Echo Link Amp, Echo Dot with clock, Echo Flex, Echo Studio amazon.c...

lang:i-klinton **score:13** filesize: 212 K page_count: 2 document date: 2020-01-28



[pdf]

AIG JAPAN TsCs EchoAmazon Legal 20210817 m media amazon images G 09 kindle dp 2022

AUCC 4739684 3 |||

Amazon <http://www.amazon.co.jp> amazon.co.jp Amazon 2012 10 24 amazon.co.jp

Amazon 30 ... on Echo, Amazon Echo Plus, Amazon Echo Spot, Echo Dot, Echo,

Echo Show 5,Echo Show 8, Echo Show 10, **Echo Sub**, Echo Input, Echo Link, Echo

Link Amp, Echo Dot with clock, Echo Flex, Echo Studio, Echo Au...

lang:i-klinton **score:13** filesize: 242.33 K page_count: 2 document date: 2021-08-17



[pdf]

AIG JAPAN TsCs EchoAmazon Legal 20220323 m media amazon images G 09 kindle dp 2023

AUCC 01 9212812 1 |||

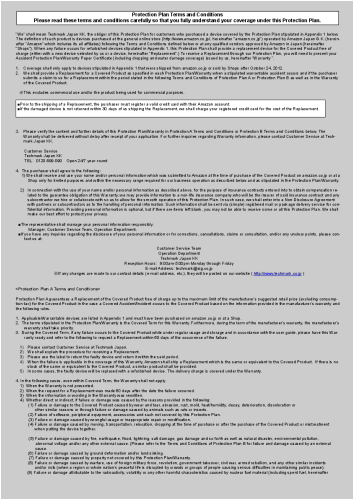
Amazon <http://www.amazon.co.jp> amazon.co.jp Amazon 2012 10 24 amazon.co.jp

Amazon 30 ... on Echo, Amazon Echo Plus, Amazon Echo Spot, Echo Dot, Echo,

Echo Show 5,Echo Show 8, Echo Show 10, **Echo Sub**, Echo Input, Echo Link, Echo

Link Amp, Echo Dot with clock, Echo Flex, Echo Studio, Echo Au...

lang:i-klinton **score:13** filesize: 242.46 K page_count: 2 document date: 2021-08-07



[pdf] Warranty

Omata Sujata TsCs Echo English 20190910 CB1198675309 m media amazon images G 09 |||

Protection Plan Terms and Conditions Please read these terms and conditions

carefully so that you fu ... Products: Amazon Echo Dot, Amazon Echo, Amazon Echo

Plus, Amazon Echo Spot, Echo Show, Echo Show 5, **Echo Sub**, Echo Input, Echo

Link, Echo Link Amp, Echo Dot with clock, Echo Flex, Echo Studio Product...

lang:en **score:12** filesize: 268.84 K page_count: 2 document date: 2019-09-11

