

[Manuals.plus](#) /

> [Intex](#) /

> INTEX Ultra XTR Deluxe Above Ground Swimming Pool Set User Manual

Intex 26329EH

INTEX 26329EH Ultra XTR Deluxe Above Ground Swimming Pool Set

Brand: Intex | **Model:** 26329EH

User Manual and Product Guide

INTRODUCTION

The INTEX Ultra XTR Deluxe Above Ground Swimming Pool Set offers a premium swimming experience with enhanced durability and ease of assembly. Designed for long-lasting enjoyment, this pool features a robust galvanized steel frame, puncture-resistant liner, and an efficient sand filter pump to maintain crystal clear water.

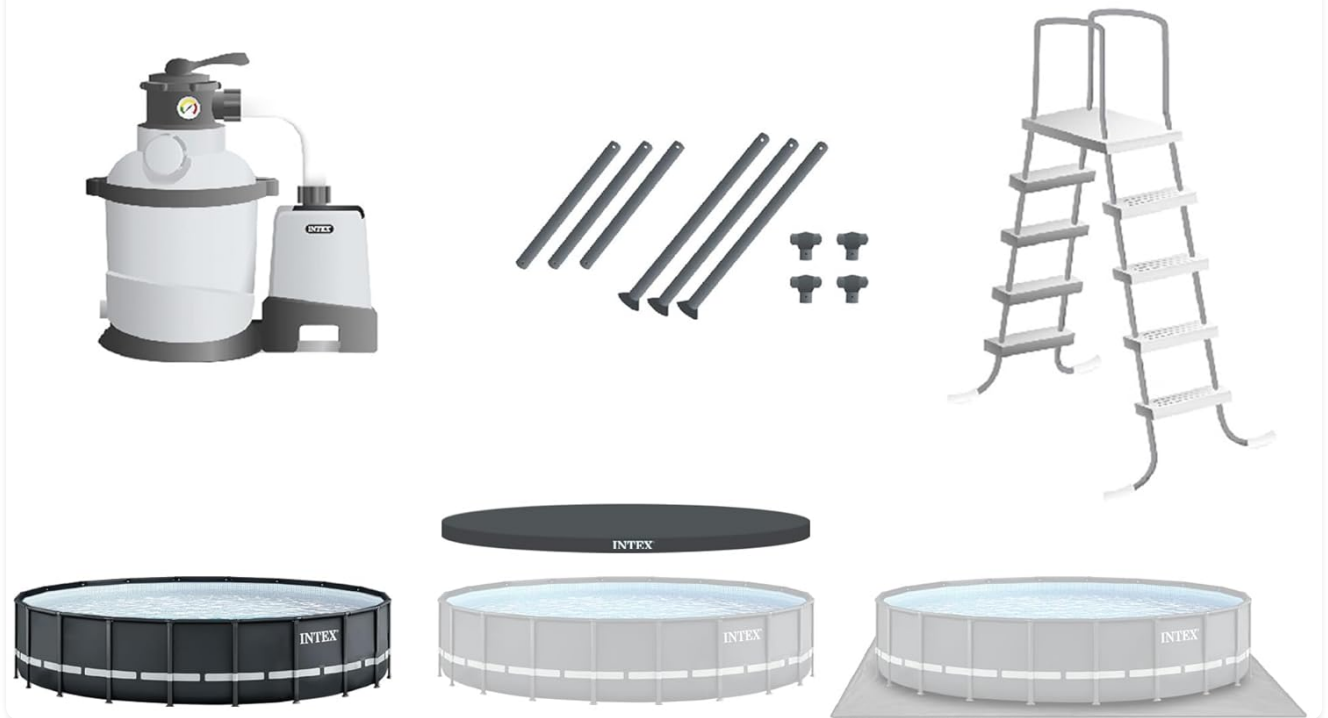
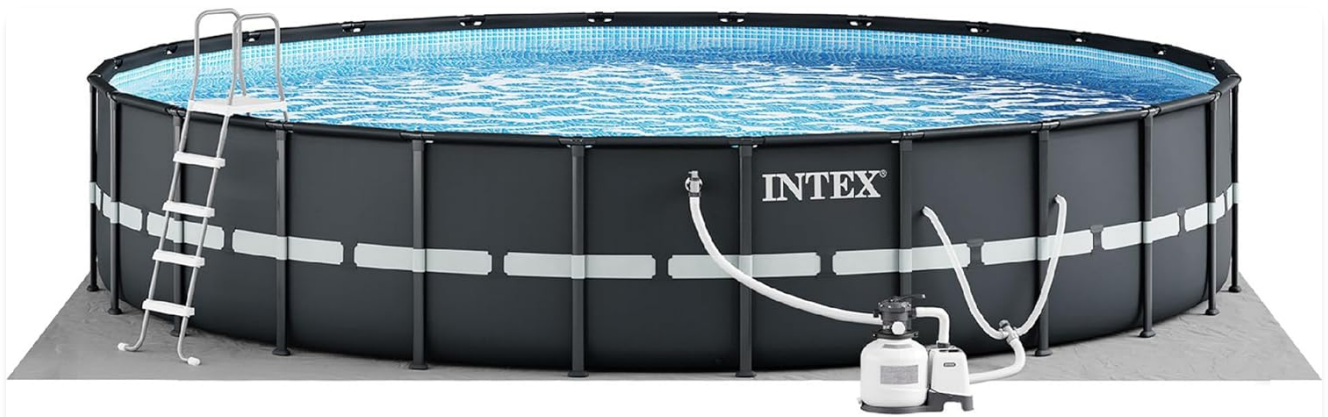


Figure 1: Complete INTEX Ultra XTR Deluxe Above Ground Swimming Pool Set.

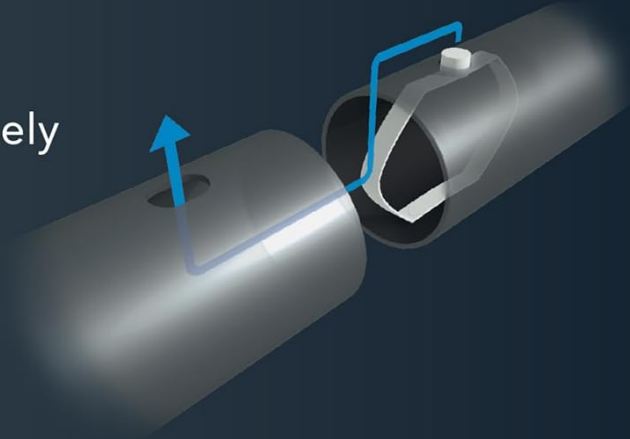
SETUP AND ASSEMBLY

The Ultra XTR pool is designed for straightforward assembly, typically ready for water in approximately 60 minutes. The innovative Easy Lock System allows frame components to snap together without the need for locking pins or additional tools.

- **Site Preparation:** Ensure the chosen installation site is level and clear of debris.
- **Frame Assembly:** Connect the galvanized steel frame components using the Easy Lock System.
- **Liner Installation:** Carefully spread out the Super-Tough 3-Ply PVC liner within the assembled frame.
- **Pump and Filter Connection:** Attach the Krystal Clear Sand Filter Pump and associated hoses.
- **Filling the Pool:** Begin filling the pool with water, ensuring the liner settles correctly.

Easy-Lock System

Composite T-joints precisely engineered for strength, frame protection, and easy, tool-free setup



Superior Frame Design

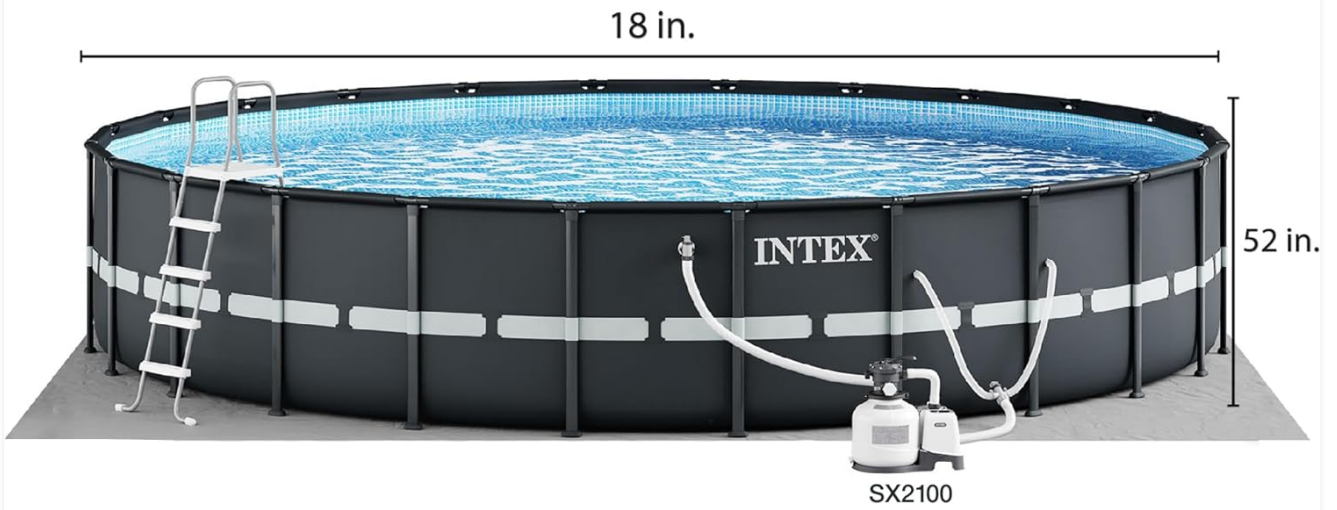
Galvanized steel frames for extra durability and rust-resistance

INTEX[®]

Figure 2: Illustration of the Easy-Lock System and superior galvanized steel frame design for enhanced strength and rust resistance.



APPROX. SETUP
60 MIN.



WATER DEPTH
46 in.



WATER CAPACITY
6,981 gal.

Figure 3: The pool's dimensions (18 ft x 52 in) and approximate setup time of 60 minutes.

INCLUDED ACCESSORIES



**Krystal Clear™
Sand Filter Pump
SX2100**



**Removable
Ladder**



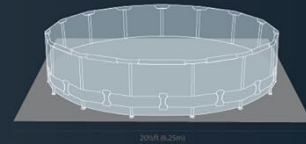
Pool Frame



Pool Liner



Pool Cover



Ground Cover



INTEX®

Figure 4: All included accessories for the pool set, including the Krystal Clear Sand Filter Pump, removable ladder, pool frame, pool liner, pool cover, and ground cover.

OPERATING THE POOL

The included Krystal Clear Sand Filter Pump (model #26645EG) is essential for maintaining water quality. It provides excellent filtration and features a 6-function control valve for various operations.

Krystal Clear Sand Filter Pump Functions:

- **Filter:** Standard operation for continuous water purification.
- **Backwash:** Reverses water flow to clean the sand filter.
- **Rinse:** Settles the sand after backwashing.
- **Recirculate:** Circulates water without filtering (e.g., for chemical distribution).
- **Drain:** Empties the pool water.

- **Close System:** Shuts off all water flow to the pump.

The pump has a flow rate of 2100 GPH and utilizes Hydro Aeration Technology for improved filtration, clarity, and freshness of the pool water.

INTEX®

KRYSTAL CLEAR™ SAND FILTER PUMP SX2100

- 6 Functions — Filtration, Backwash, Rinse, Recirculate, Drain, and Close System
- Sand lasts up to 5 years with regular backwashing
- Pump Flow Rate:
2100 GPH



INTEX's patented HydroAeration® Technology is precision engineered to improve filtration, clarity and freshness in above ground pools.

Figure 5: The Krystal Clear Sand Filter Pump SX2100, featuring Hydro Aeration Technology for enhanced water quality.



Figure 6: Close-up view of the Hydro Aeration Technology outlet, showing air bubbles being introduced into the water for improved circulation and filtration.

MAINTENANCE

Proper maintenance is crucial for the longevity and cleanliness of your INTEX pool. The pool's construction materials are designed for durability and resistance to wear.

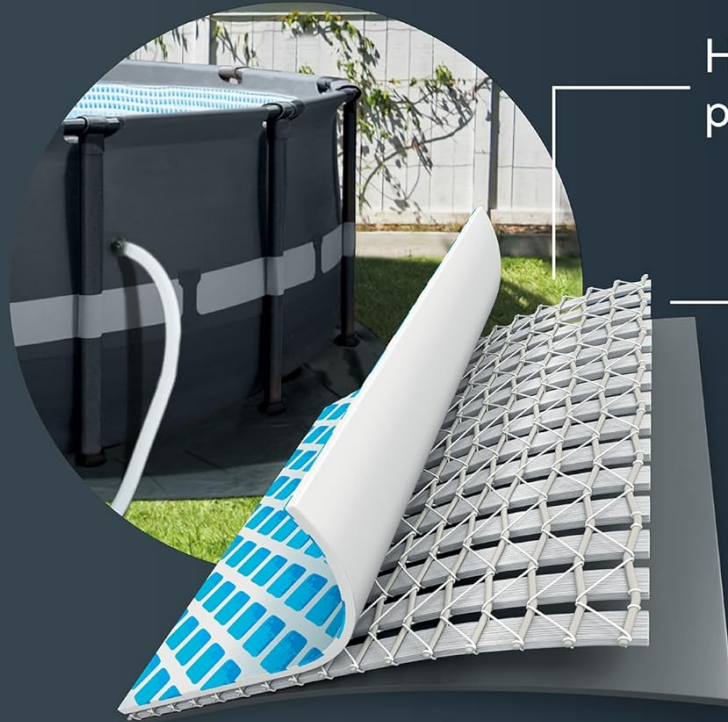
Pool Liner and Frame:

- The pool features a **Super-Tough 3-Ply PVC material**, which is puncture-resistant and built to withstand the rigors of regular use. A patch is included for minor repairs.
- The frame is constructed from **galvanized steel** with inner and outer powder coating, ensuring ultimate resistance to rust. The T-Joints are engineered for high strength and infused with UV inhibitor for weather resistance.

INTEX®



3-PLY SIDE WALL LINER



High-strength
polyester mesh

Extra-thick
PVC layer

= 50% higher
tear resistance



*compared to standard INTEX® Metal Frame Pool Liner

Figure 7: Cross-section view illustrating the 3-ply side wall liner, composed of high-strength polyester mesh and extra-thick PVC layers for 50% higher tear resistance.



Figure 8: Comparison showing the superior rust protection of the XTR frame (left) versus a regular frame without interior coating (right).

Filter Pump Maintenance:

- Regular backwashing of the sand filter is recommended to maintain optimal filtration performance. Sand can last up to 5 years with proper backwashing.
- Periodically check and clean the pump's pre-filter basket.



Figure 9: The Krystal Clear Sand Filter Pump SX2100, which requires regular maintenance for optimal performance.

TROUBLESHOOTING

This section provides general guidance for common issues. For detailed troubleshooting, please refer to the full user manual.

- **Cloudy Water:** Check filter pump operation, perform backwash, and test water chemistry (pH, chlorine levels).
- **Low Water Flow:** Inspect pump impeller for blockages, ensure hoses are not kinked, and check sand filter for cleanliness.
- **Leaking:** Inspect all connections for tightness and check the liner for punctures. Use the included patch kit for minor liner damage.
- **Pump Not Starting:** Verify power connection, check circuit breaker, and ensure pump is primed.

SPECIFICATIONS

Feature	Detail
Brand	Intex
Model Number	26329EH
Product Dimensions	216"L x 216"W x 52"H (18 ft x 52 in)
Shape	Round
Color	Gray
Material	Polyvinyl Chloride (PVC), Alloy Steel
Capacity	6981 Gallons (26,425 Liters)
Included Components	2100 GPH Sand Filter Pump, Removable Ladder, Ground Cloth, Pool, Debris Cover
Item Weight	274 Pounds
Assembly Required	Yes

WARRANTY AND SUPPORT

The INTEX Ultra XTR Deluxe Above Ground Swimming Pool Set includes a **2-year warranty** for peace of mind, covering manufacturing defects and ensuring product quality.

For any questions, technical assistance, or warranty claims, please contact Intex Customer Support. You can also refer to the official user manual for comprehensive information.

[Download Full User Manual \(PDF\)](#)