

## Intex 26325EH

# INTEX 26325EH Ultra XTR Deluxe Above Ground Swimming Pool Set

16FT X 48IN INSTRUCTION MANUAL

## 1. Product Overview

---

The INTEX 26325EH Ultra XTR Deluxe Above Ground Swimming Pool Set offers a robust and enjoyable swimming experience. This 16ft x 48in round pool is engineered for durability and stability, featuring a galvanized steel frame and a puncture-resistant 3-Ply PVC liner. It includes a Krystal Clear Sand Filter pump for efficient water maintenance, a removable ladder, pool cover, and ground cloth, providing a complete solution for backyard aquatic fun.





Figure 1: Complete INTEX Ultra XTR Deluxe 16ft x 48in Round Above Ground Pool Set.

## 2. Setup Instructions

The Ultra XTR pool is designed for easy assembly, typically ready for water in approximately 45 minutes. The frame components utilize an Easy Lock System, allowing them to snap together without the need for locking pins or additional tools.

### 2.1 Site Preparation

- Select a level, stable area for pool installation.
- Clear the area of any sharp objects, debris, or uneven surfaces.
- Lay down the included ground cloth to protect the pool liner.

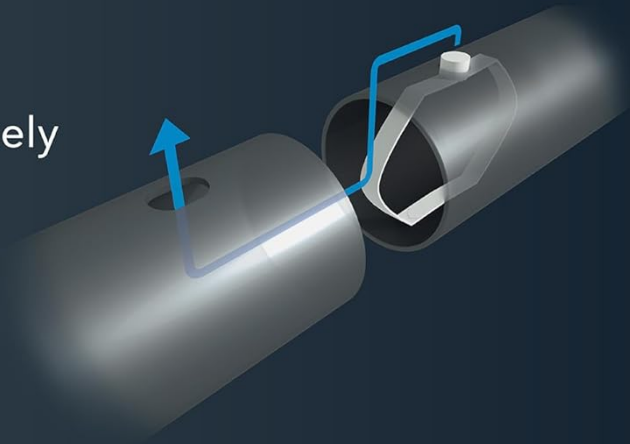
### 2.2 Frame Assembly

The frame combines high-quality galvanized steel with a precision-engineered locking system for enhanced durability and stability. The T-Joints are infused with a UV inhibitor for weather resistance and long service life.



## Easy-Lock System

Composite T-joints precisely engineered for strength, frame protection, and easy, tool-free setup



## Superior Frame Design

Galvanized steel frames for extra durability and rust-resistance

**INTEX®**

Figure 2: The Easy-Lock System allows frame components to snap together easily.

### 2.3 Liner Installation

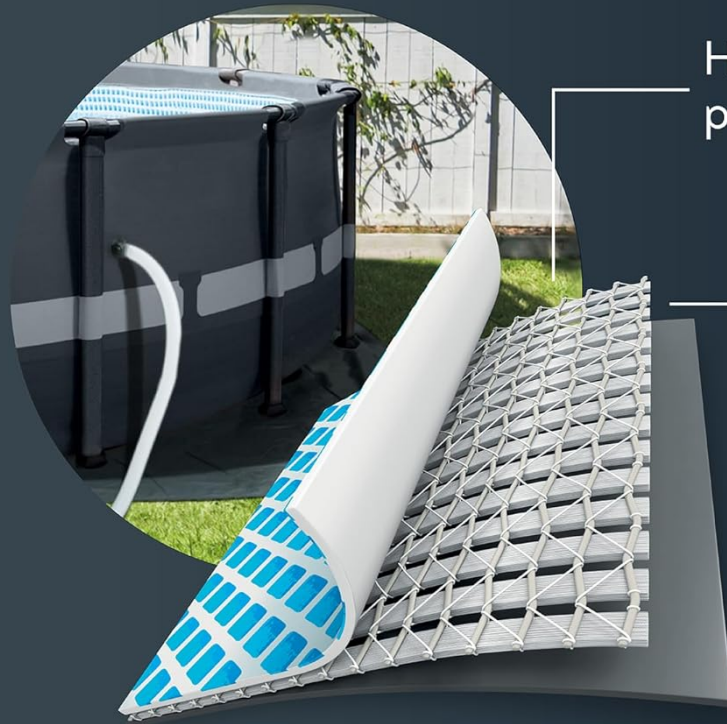
The pool liner is made with puncture-resistant 3-Ply PVC material, designed to withstand wear and tear. Carefully unfold the liner and position it within the assembled frame, ensuring it is centered and smooth before filling with water.



**INTEX®**



## 3-PLY SIDE WALL LINER



High-strength  
polyester mesh

Extra-thick  
PVC layer

= **50%** higher  
tear resistance



\*compared to standard INTEX® Metal Frame Pool Liner

Figure 3: The SuperTough 3-Ply Side Wall Liner provides 50% higher tear resistance.

### 2.4 Included Accessories

The set includes all necessary accessories for immediate use:

- Krystal Clear Sand Filter Pump SX1500
- Removable Ladder
- Pool Cover
- Ground Cloth
- Pool Frame components
- Pool Liner



# INCLUDED ACCESSORIES



**Krystal Clear™  
Sand Filter Pump  
SX1500**



**Removable  
Ladder**



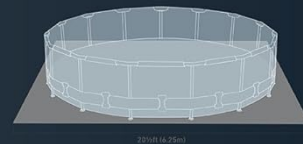
**Pool Frame**



**Pool Liner**



**Pool Cover**



**Ground Cover**



**INTEX®**

Figure 4: All accessories included with the INTEX Ultra XTR Deluxe Pool Set.

## 2.5 Video: Ultraframe Round Rectangular Pool Overview

Your browser does not support the video tag.

Video 1: This video provides a general overview of the Ultraframe Round Rectangular pool, demonstrating its structure and features relevant to initial setup.

## 3. Operating Instructions

The included Krystal Clear Sand Filter pump (#26643EG) is essential for maintaining clean and clear pool water. It features a 6-function control valve for comprehensive water management.

### 3.1 Krystal Clear Sand Filter Pump Functions

- **Filter:** Standard operation for continuous water purification.
- **Backwash:** Reverses water flow to clean the sand filter.
- **Rinse:** Flushes residual dirt from the filter after backwashing.



- **Recirculate:** Circulates water without passing through the filter.
- **Drain:** Empties water from the pool.
- **Close System:** Shuts off all water flow to the filter.

The pump provides excellent water filtration with a flow rate of 1500 GPH and incorporates Hydro Aeration Technology to improve water clarity and freshness.

**INTEX®**

## KRYSTAL CLEAR™ SAND FILTER PUMP SX1500

- 6 Functions — Filtration, Backwash, Rinse, Recirculate, Drain, and Close System
- Sand lasts up to 5 years with regular backwashing
- Pump Flow Rate:  
**1500 GPH**



INTEX's patented HydroAeration® Technology is precision engineered to improve filtration, clarity and freshness in above ground pools.

Figure 5: The Krystal Clear Sand Filter Pump SX1500, featuring 6 functions and Hydro Aeration Technology.

### 3.2 Video: Filtration System Features

Your browser does not support the video tag.

Video 2: This video offers a detailed look at the features, materials, and filtration system of the pool, providing practical insights into its operation.

## 4. Maintenance

Regular maintenance is crucial for extending the life of your pool and ensuring safe, clean water.



### 4.1 Filter Maintenance

- Perform regular backwashing and rinsing of the sand filter as needed to maintain optimal filtration performance.
- The sand in the filter can last up to 5 years with regular backwashing, reducing the frequency of sand replacement.

### 4.2 Water Chemistry

Test pool water regularly and adjust chemical levels (pH, chlorine, alkalinity) according to manufacturer guidelines to prevent algae growth and ensure water sanitation.

### 4.3 Cleaning

- Skim debris from the water surface daily.
- Vacuum the pool floor as needed to remove settled dirt and particles.
- Use the included pool cover when the pool is not in use to keep out debris and reduce evaporation.

### 4.4 Liner Care

The SuperTough liner is designed to be puncture-resistant. In case of any damage, a patch is included for easy fixes. Follow instructions for proper patch application.

## 5. Troubleshooting

Here are some common issues and their potential solutions:

- **Cloudy Water:** Check filter operation, backwash/rinse filter, test and adjust water chemistry (chlorine, pH).
- **Algae Growth:** Shock the pool with chlorine, brush pool walls, ensure proper filtration.
- **Low Water Flow from Pump:** Check for clogs in hoses or skimmer basket, ensure filter sand is clean (backwash/rinse).
- **Leaks:** Inspect the liner for punctures and use the included patch kit for repairs. Check all hose connections for tightness.

## 6. Specifications

Feature	Detail
Brand	Intex
Model Number	26325EH
Product Dimensions	192"L x 192"W x 48"H (16ft x 16ft x 48in)
Shape	Round
Capacity	5061 Gallons (19,158 L)
Water Depth	42" (1.07 m)
Material	Alloy Steel, Polyvinyl Chloride (PVC)
Item Weight	216 Pounds



Special Feature	Puncture Resistant
Assembly Required	Yes

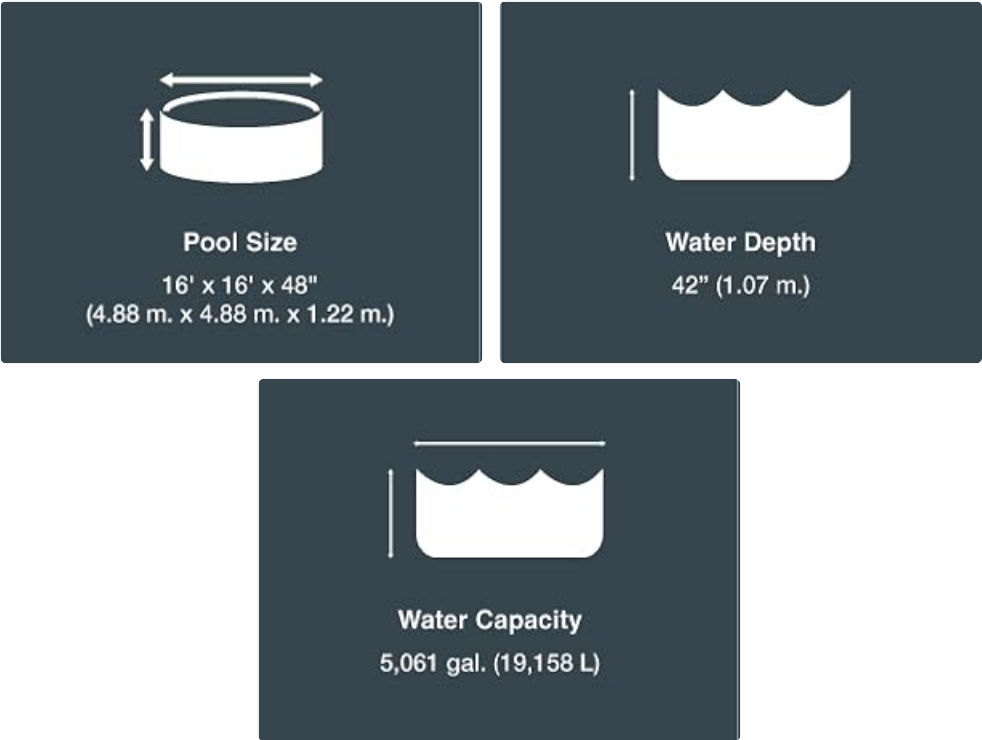


Figure 6: Key dimensions and capacity of the pool.

## 7. Safety Information

---

For safe enjoyment of your pool, please adhere to the following:

- Do not let more than 8 people occupy the pool at once.
- Always supervise children in and around the pool.
- Ensure the ladder is securely placed before use.
- Do not dive or jump into the pool.

## 8. Warranty and Support

---

The INTEX Ultra XTR Deluxe Above Ground Swimming Pool Set comes with a **2-year warranty**. This warranty covers the pool liner, frame, and filtration system, providing peace of mind regarding the quality and durability of your purchase.

For any questions, technical assistance, or warranty claims, please contact Intex customer support. Refer to the packaging or the official Intex website for contact details.