

## Manuals+

[Q & A](#) | [Deep Search](#) | [Upload](#)

[manuals.plus](#) /

> [ASIILOVI](#) /

> [ASIILOVI Bluetooth Beanie VG008 Instruction Manual](#)

## ASIILOVI VG008

# ASIILOVI Bluetooth Beanie VG008 Instruction Manual

Model: VG008 | Brand: ASIILOVI

## 1. INTRODUCTION

---

The ASIILOVI Bluetooth Beanie VG008 combines warmth and comfort with wireless audio technology. This double-layered wool-lined beanie allows you to listen to music and make hands-free calls without the need for separate headphones. It features a built-in microphone and stereo speakers, offering a convenient and enjoyable audio experience in cold weather conditions.



Image: A woman wearing the gray ASIILOVI Bluetooth Beanie with a pom pom, smiling. This image illustrates the product in use.

## 2. PACKAGE CONTENTS

Upon opening your ASIILOVI Bluetooth Beanie package, you should find the following items:

- 1 x ASIILOVI Bluetooth Beanie (Model VG008)
- 1 x USB Charging Cable
- 1 x Welcome Guide

## Unique Gifts Selections for Both Man & Women Unique Tech Gifts Stocking Stuffer



Image: A stack of colorful beanies and a white gift box with an ASIILOVI Bluetooth Beanie inside. This image shows the product packaging and available colors.

### 3. SETUP

#### 3.1 Charging the Beanie

Before initial use, fully charge your Bluetooth Beanie. The charging port is located on the control panel embedded in the beanie.

1. Locate the micro USB charging port on the control panel.
2. Connect the provided USB charging cable to the port.
3. Plug the other end of the USB cable into a compatible USB power source (e.g., computer, wall adapter).
4. The LED indicator light on the control panel will illuminate red during charging and turn blue when fully charged.

A full charge typically takes approximately 1 hour and provides up to 20 hours of playing time or 24 hours of talk time, with a standby time of 100 hours.

#### 3.2 Bluetooth Pairing

To connect your ASIILOVI Bluetooth Beanie to your device:

1. Ensure the beanie is charged and turned off.
2. Press and hold the Play/Pause button (middle button) on the control panel for approximately 6 seconds until the LED indicator light blinks blue and red alternately. This indicates pairing mode.
3. On your smartphone or Bluetooth-enabled device, go to Bluetooth settings and enable Bluetooth.
4. Search for available devices. The beanie should appear as "Bluetooth Beanie" or a similar name.
5. Select the beanie from the list to pair. Once successfully paired, the LED indicator will typically show a solid blue light or flash blue slowly.

The beanie will automatically connect to the last paired device when turned on, if the device's Bluetooth is active and within range (up to 45 feet wireless range).

Your browser does not support the video tag.

Video: An official ASIILOVI video demonstrating the Bluetooth Beanie and its gift packaging. This video provides a visual overview of the product and its presentation.

## 4. OPERATING INSTRUCTIONS

---

### 4.1 Control Panel Functions

The simple control panel on the beanie allows for easy management of your audio and calls:

- **Play/Pause Button (Middle):** Press once to play or pause music. Press once to answer an incoming call. Press and hold to redial the last number.
- **Volume Up / Next Track Button (+):** Press once to increase volume. Press and hold to skip to the next track.
- **Volume Down / Previous Track Button (-):** Press once to decrease volume. Press and hold to go to the previous track.
- **LED Status Light:** Indicates power, charging, and pairing status.

### 4.2 Music Playback and Calls

Once paired, you can enjoy high-quality digital sound through the built-in 12.5mm stereo speakers. The integrated microphones ensure clear communication during hands-free calls.

## Up to 20 Hours Playing & Superior Audio Quality



45 Feet  
Wireless Range

2



2 Hours  
Charging Time

20



20 Hours  
Playing Time



Exceptional  
Audio Fidelity

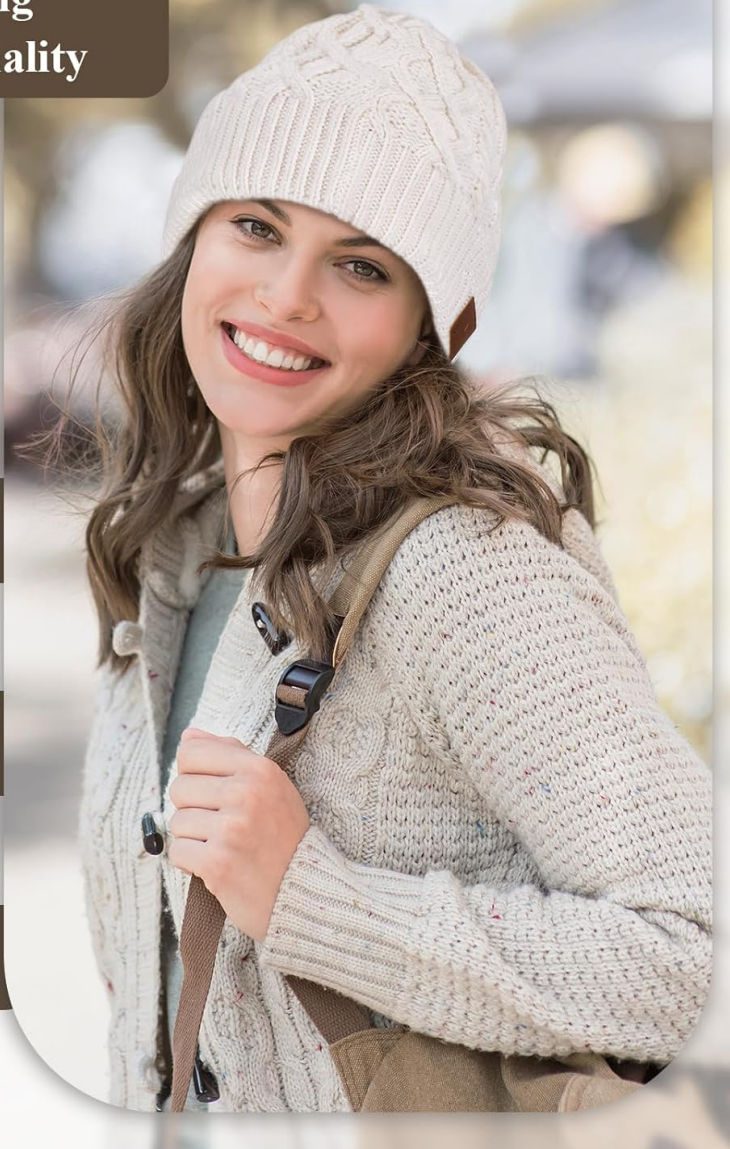


Image: A woman wearing the white ASIILOVI Bluetooth Beanie, with key features like battery life and wireless range highlighted. This image emphasizes the product's performance features.

## 5. MAINTENANCE

### 5.1 Washing Instructions

The ASIILOVI Bluetooth Beanie is hand-washable after removing the electronic modules.

1. Carefully locate the headphone slits inside the beanie.
2. Gently remove the Bluetooth speaker modules and the control panel from their pockets.
3. Hand-wash the beanie with mild detergent in cold water.
4. Rinse thoroughly and air dry completely before reinserting the modules.
5. Once the beanie is dry, carefully reinsert the speaker modules and control panel into their designated pockets.

## Detachable Module for Easier Washing the Beanie



### 1. TAKE OUT

Take out the headset and controller



### 2. HAND WASH THE BEANIE



### 3. HANG YOUR BEANIE TO DRY



### 4. REATTACH THE SPEAKERS & CONTROLLER

**Note 1: Remember to remove the SPEAKERS before washing**

**Note 2: Hand Wash Only**

Image: A step-by-step visual guide on how to detach the Bluetooth module for washing, hand wash the beanie, dry it, and reattach the module. This is essential for product longevity.

## 6. TROUBLESHOOTING

If you encounter issues with your ASILOVI Bluetooth Beanie, please refer to the following common solutions:

- **No Power:** Ensure the beanie is fully charged. Connect it to a power source and check if the LED indicator lights up.
- **Cannot Pair:** Make sure the beanie is in pairing mode (blinking blue/red LED). Turn off and on your device's Bluetooth. Ensure the beanie is not already connected to another device.
- **Poor Sound Quality/Disconnections:** Ensure your device is within the 45-foot wireless range. Check for obstructions between the beanie and your device. Restart both the beanie and your device.
- **Controls Not Responding:** Ensure the beanie is powered on and connected. Try restarting the beanie.

If problems persist, please contact customer service for further assistance.

## 7. SPECIFICATIONS

|                           |                                  |
|---------------------------|----------------------------------|
| <b>Model Number</b>       | VG008                            |
| <b>Product Dimensions</b> | 8.5 x 1.2 x 9.8 inches           |
| <b>Item Weight</b>        | 5.6 ounces                       |
| <b>Battery Type</b>       | 1 Lithium Ion battery (included) |
| <b>Wireless Range</b>     | Up to 45 feet                    |
| <b>Playing Time</b>       | Up to 20 hours                   |
| <b>Talk Time</b>          | Up to 24 hours                   |
| <b>Standby Time</b>       | Up to 100 hours                  |
| <b>Material</b>           | Double-Layer Wool Lining         |

## 8. WARRANTY AND SUPPORT

---

Your ASILOVI Bluetooth Beanie comes with a fan-favorite 18-month warranty. For any questions or concerns regarding your product, please do not hesitate to contact our friendly customer service team. We are committed to providing excellent support.

Contact information can typically be found on the product packaging or the official ASILOVI website.