

[Manuals.plus](#) /

› [Elgato](#) /

› Elgato Stream Deck Mini User Manual

Elgato 10GAI9901

Elgato Stream Deck Mini User Manual

Model: 10GAI9901

1. PRODUCT OVERVIEW

The Elgato Stream Deck Mini is a compact, powerful control interface designed to streamline your workflow and enhance productivity. Featuring six customizable LCD keys, it allows you to instantly trigger actions, launch applications, switch scenes, adjust audio, and much more across various platforms and software. It's an essential tool for content creators, streamers, and professionals looking to optimize their digital interactions.



The Elgato Stream Deck Mini, a compact control interface with six programmable LCD keys.

2. WHAT'S IN THE BOX

Upon unboxing your Elgato Stream Deck Mini, you should find the following items:

- Elgato Stream Deck Mini device
- Quick Start Guide

IN THE BOX



Stream Deck Mini



Quick Start Guide



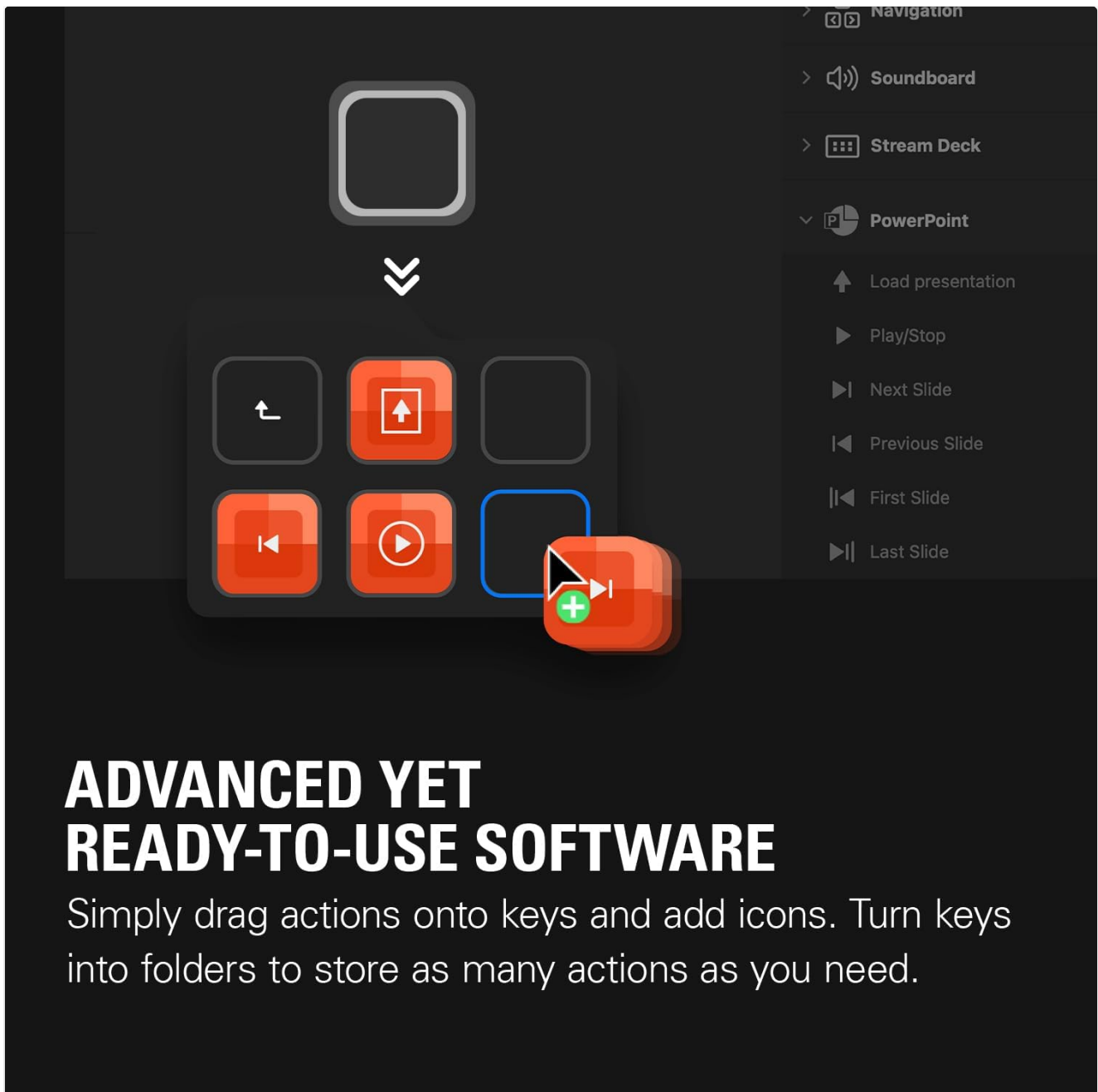
System Requirements:
Windows 10 64-bit, macOS 10.15 or newer

Contents of the Elgato Stream Deck Mini packaging.

3. SETUP

Follow these steps to set up your Elgato Stream Deck Mini:

1. **Connect the Device:** Plug the integrated USB 2.0 cable from the Stream Deck Mini into an available USB port on your computer.
2. **Install Software:** Download and install the Elgato Stream Deck software from the official Elgato website ([elgato.com/downloads](https://www.elgato.com/downloads)).
3. **System Requirements:** Ensure your system meets the minimum requirements: macOS 10.15 or newer or Windows 10 (64-bit).
4. **Launch Software:** Once installed, launch the Stream Deck software. The software will automatically detect your device.
5. **Customize Keys:** Drag and drop actions from the software interface onto the desired keys on your Stream Deck Mini. You can personalize icons and settings for each action.



ADVANCED YET READY-TO-USE SOFTWARE

Simply drag actions onto keys and add icons. Turn keys into folders to store as many actions as you need.

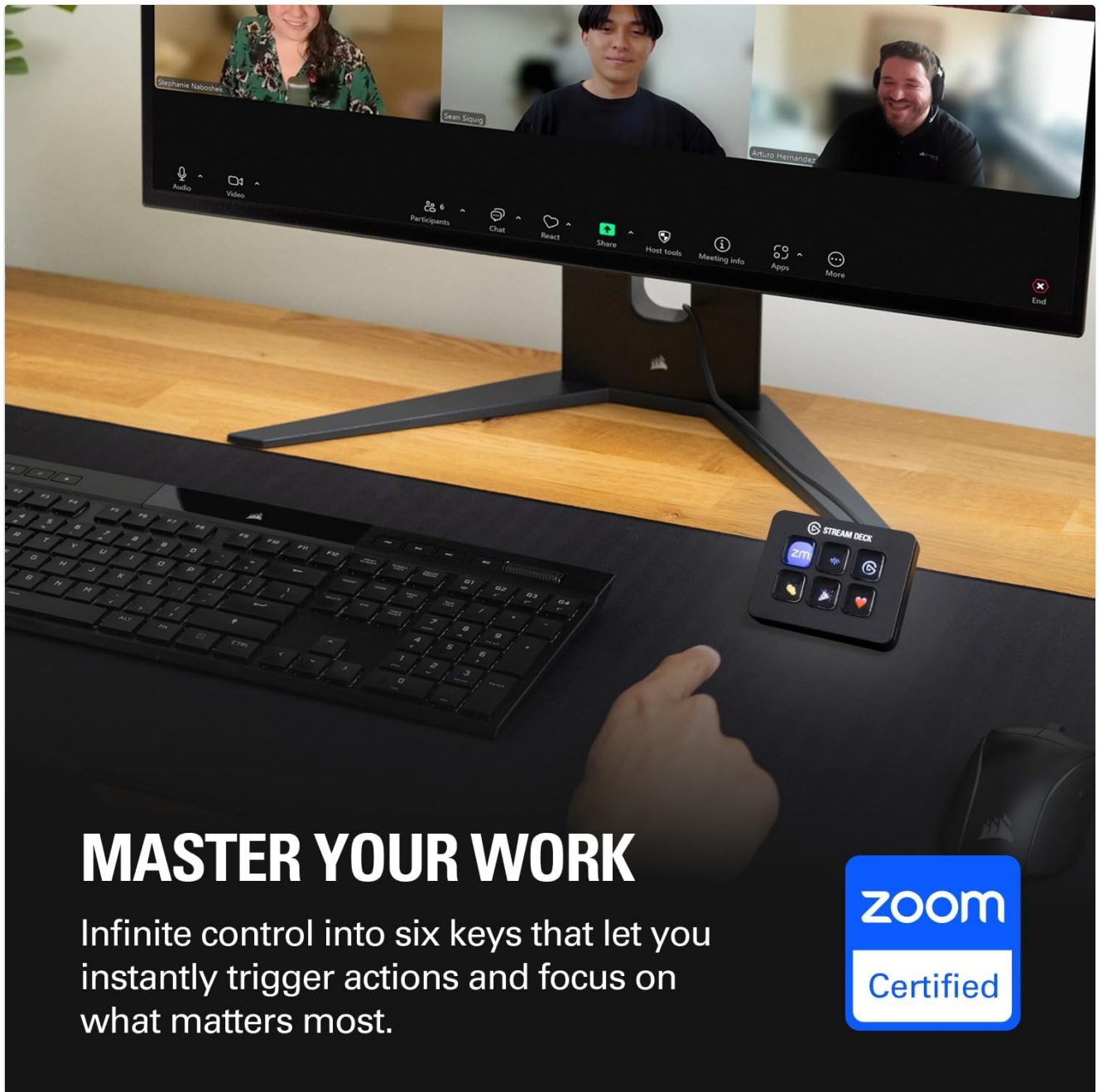
The Stream Deck software allows for easy drag-and-drop customization of keys.

4. OPERATING THE STREAM DECK MINI

The Stream Deck Mini is designed for intuitive operation, allowing you to execute complex commands with a single press of a key.

Key Functions and Customization

- **Instant Actions:** Each of the six LCD keys can be programmed to trigger a specific action, such as muting your microphone, launching an application, or playing a sound effect.
- **Multi-Actions:** Combine multiple actions into a single key press. For example, one button can launch your streaming software, switch to your starting scene, and post a tweet simultaneously.
- **Folders:** Extend the functionality beyond six keys by creating folders. A key can be set to open a folder, revealing a new set of six actions. This allows for virtually unlimited customization.
- **Profiles:** Create different profiles for various applications or workflows. The Stream Deck can automatically switch profiles when you open a specific application.

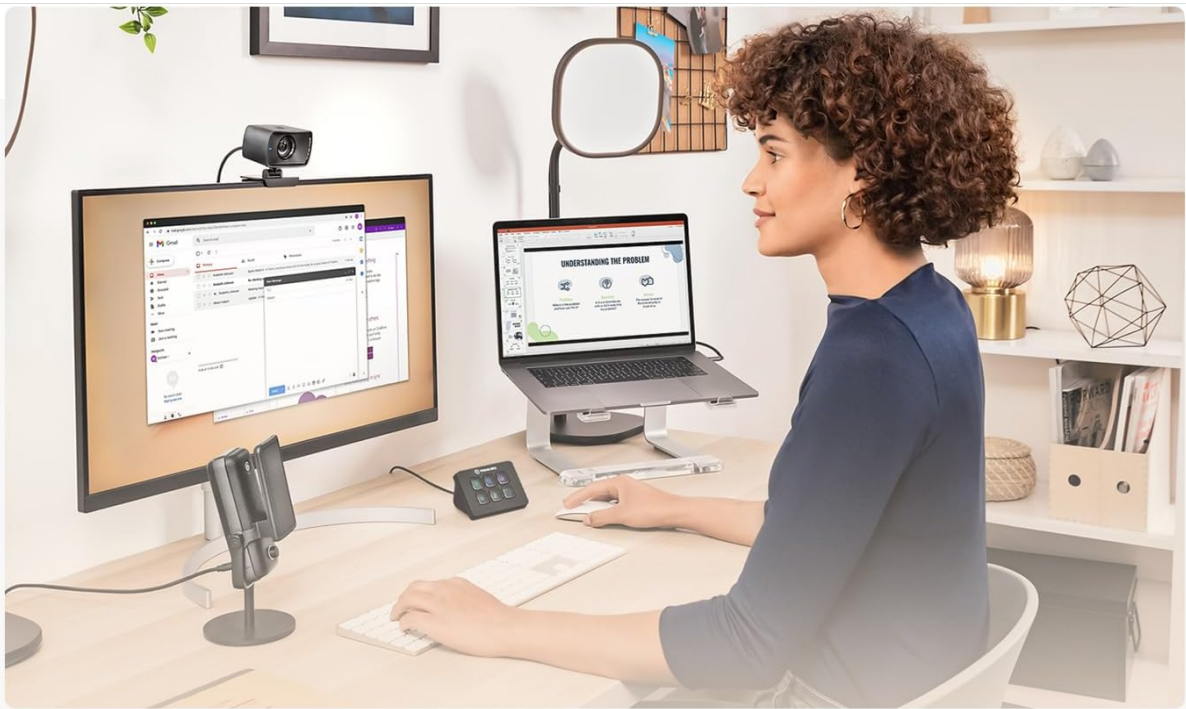


MASTER YOUR WORK

Infinite control into six keys that let you instantly trigger actions and focus on what matters most.



Master your work with the Stream Deck Mini, integrating seamlessly with applications like Zoom.



MICROSOFT TEAMS
No more fumbling for
the mute button.



POWERPOINT
Power through
presentations with ease.



EXCEL
No need to memorize
keyboard shortcuts.

Optimize your workflow with dedicated setups for Microsoft Teams, PowerPoint, and Excel.

WORKS WITH WHAT YOU NEED

Get your apps up and running with Stream Deck in no time. Zoom, Teams, PowerPoint, MS Office, and loads more.



The Stream Deck Mini works with a wide range of popular applications.

5. MAINTENANCE

To ensure the longevity and optimal performance of your Elgato Stream Deck Mini, follow these simple maintenance guidelines:

- **Cleaning:** Use a soft, dry, lint-free cloth to gently wipe the surface of the device and the LCD keys. Avoid using abrasive cleaners, solvents, or aerosol sprays, as these can damage the finish or internal components.
- **Storage:** When not in use, store the Stream Deck Mini in a cool, dry place away from direct sunlight and extreme temperatures.
- **Cable Care:** Do not bend or crimp the integrated USB cable excessively. Always grasp the plug, not the cable, when disconnecting the device.
- **Avoid Liquids:** Keep the device away from liquids. In case of accidental spills, immediately disconnect the device from your computer and allow it to dry completely before reconnecting.

6. TROUBLESHOOTING

If you encounter issues with your Elgato Stream Deck Mini, refer to the following common problems and solutions:

Problem	Possible Solution
Device not recognized by software	Ensure the USB cable is securely connected to both the Stream Deck Mini and your computer. Try a different USB port. Restart your computer and the Stream Deck software. Reinstall the Stream Deck software.
Keys are blank or not displaying icons	Verify that the Stream Deck software is running. Check if the device is recognized in the software. Ensure you have assigned actions and icons to the keys in the software.
Actions not triggering	Confirm that the associated application is open and active. Check the action settings in the Stream Deck software for any misconfigurations. Update the Stream Deck software to the latest version.

7. TECHNICAL SPECIFICATIONS

Feature	Detail
Dimensions	84 x 60 x 58 mm / 3.3 x 2.4 x 2.3 in.
Weight	160 g / 5.6 ounces
Keys	6 customizable LCD keys
Interface	Integrated USB 2.0 cable (150 cm / 59.1 in.)
System Requirements	macOS 10.15 or newer, Windows 10 (64-bit)
Color	Black
Model Number	10GAI9901

8. WARRANTY AND SUPPORT

For detailed warranty information, please refer to the documentation included with your product or visit the official Elgato website. For further assistance, technical support, or to download the full installation manual, please visit the Elgato support page or refer to the provided PDF document:

[Download Installation Manual
\(PDF\)](#)

