



Manuals.plus /

- › Inus /
- › Inus N22 Electric Heated Bidet Toilet Seat User Manual

## Inus N22

# Inus N22 Electric Heated Bidet Toilet Seat User Manual

Brand: Inus | Model: N22

## 1. INTRODUCTION

---

This manual provides essential information for the safe and efficient use of your Inus N22 Electric Heated Bidet Toilet Seat. Please read these instructions thoroughly before installation and operation, and retain for future reference.

## 2. SAFETY INFORMATION

---

Always follow basic safety precautions when using electrical appliances to reduce the risk of fire, electric shock, and injury. Ensure the product is properly grounded. Do not immerse the product in water. Disconnect from power before cleaning or servicing. Keep out of reach of children without supervision.

## 3. PACKAGE CONTENTS

---

Verify that all components are present before beginning installation:

- Inus N22 Bidet Main Unit
- Mounting Plate
- Mounting Bolts (2 pcs)
- Nuts (2 pcs)
- Bolt Guides
- T-valve
- Water Supply Hose
- Quick Guide
- User Manual

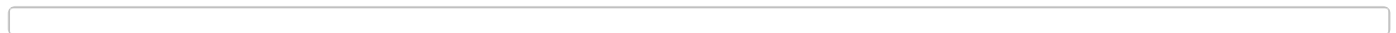


Image: Package Contents

## 4. SETUP AND INSTALLATION

---

Installation of the Inus N22 bidet seat is designed for DIY convenience and typically takes under 30 minutes. Ensure your toilet is an elongated model for proper fit. An electrical outlet must be available near the toilet.

#### 4.1 Pre-Installation Checklist

- Confirm toilet type: Elongated only.
- Verify available electrical outlet (120V AC).
- Gather necessary tools: adjustable wrench, screwdriver.

#### 4.2 Step-by-Step Installation

1. **Turn off Water Supply:** Locate the shutoff valve for your toilet and turn it clockwise to stop the water flow. Flush the toilet to empty the tank.
2. **Remove Existing Toilet Seat:** Unscrew and remove your current toilet seat and lid.
3. **Install Mounting Plate:** Place the plastic mounting plate over the toilet's mounting holes. Insert the bolt guides and then the mounting bolts, securing them with nuts from beneath.
4. **Attach Bidet Unit:** Slide the Inus N22 bidet unit onto the mounting plate until it clicks securely into place.
5. **Connect T-Valve and Hoses:** Disconnect the existing water supply hose from the toilet tank. Install the provided T-valve directly to the water tank valve. Connect the original water supply hose to one outlet of the T-valve and the bidet hose to the other.
6. **Connect Power:** Plug the bidet's power cord into a grounded electrical outlet.
7. **Restore Water Supply:** Turn the toilet's shutoff valve counter-clockwise to restore water flow. Check for leaks.

# FIT WITH ELONGATED BIDET ONLY

\*PLEASE CHECK THE SIZE BEFORE PURCHASING



W 17.40" x L 20.30" x H 6.30"

Elongated

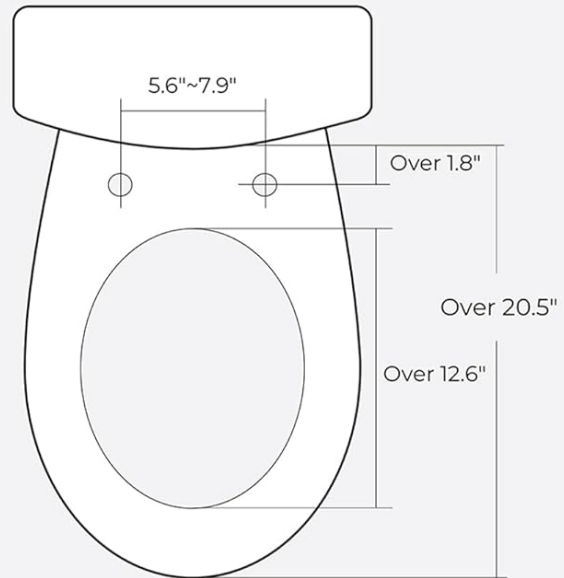


Diagram illustrating toilet compatibility and electrical requirements:

- Fits:** A toilet with a standard elongated seat is shown with a green checkmark, indicating compatibility.
- Not Fit:** A toilet with a standard round seat is shown with a red X, indicating incompatibility.
- OUTLET REQUIRED:** A standard two-prong electrical outlet is shown, indicating that a power source is necessary for the bidet's operation.

Image: Toilet Compatibility and Dimensions

# SIDE CONTROL PANEL

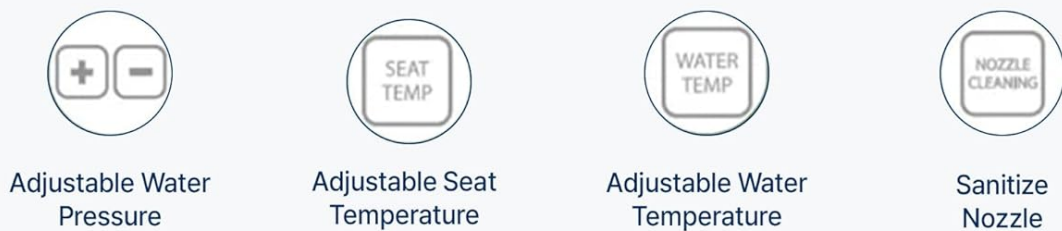
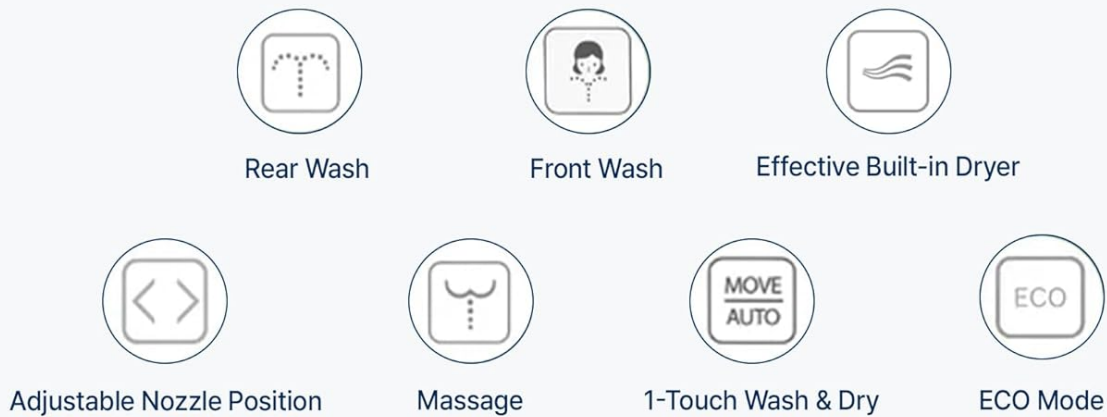


Image: Easy Installation Steps

## 4.3 Installation Videos

### Updated Installation Guide

Video: A comprehensive guide to installing the Inus N22 bidet seat, demonstrating each step from preparation to final connection.

### The Inus T-valve Installation Guide

Video: Detailed instructions on how to properly install the T-valve for the Inus bidet, ensuring correct water connections.

### The Inus Bidet Installation Guide

Video: A step-by-step video tutorial demonstrating the complete installation process for the Inus bidet.

## 5. OPERATING INSTRUCTIONS

The Inus N22 offers a range of personalized cleansing and comfort features, controlled via the intuitive side panel.

## EASY INSTALLATION

1



1. Turn off the water supply valve

2



2. Remove toilet seat

3



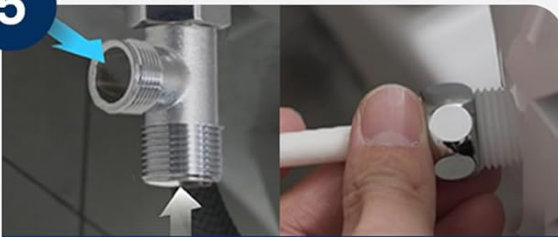
3. Assemble mounting plate to toilet bowl

4



4. Install bidet to toilet bowl

5



5. Install T-valve and connect hoses

6



6. Turn on the water supply valve

Image: Side Control Panel Overview

### 5.1 Core Functions

- **Rear Wash:** Standard cleansing for posterior.
- **Feminine Wash:** Gentle cleansing for anterior.
- **Kids Mode:** Optimized settings for children's use.
- **Massage:** Pulsating water stream for a soothing experience.
- **Dryer:** Warm air drying with adjustable temperature levels.
- **Nozzle Position:** Adjust the nozzle forward or backward for optimal cleansing.
- **Water Pressure:** Adjust the intensity of the water stream.
- **Water Temperature:** Select from 4 adjustable temperature levels (Room Temp, 93.2°F, 98.6°F, 104°F).
- **Seat Temperature:** Choose from 4 adjustable seat temperature levels (Room Temp, 93.2°F, 98.6°F, 104°F).
- **Eco Mode:** Reduces energy consumption by lowering seat and water temperatures when not in use.
- **Self-Cleaning Nozzle:** The stainless steel nozzle cleans itself before and after each use.



## HEATED SEAT

4 Adjustable seat temperatures for personalized comfort



## INSTANT WARM WATER

Enjoy continuous warm water instantly, without waiting



## WARM AIR DRYING

4 Temperature settings, easily choose the comfortable temperature

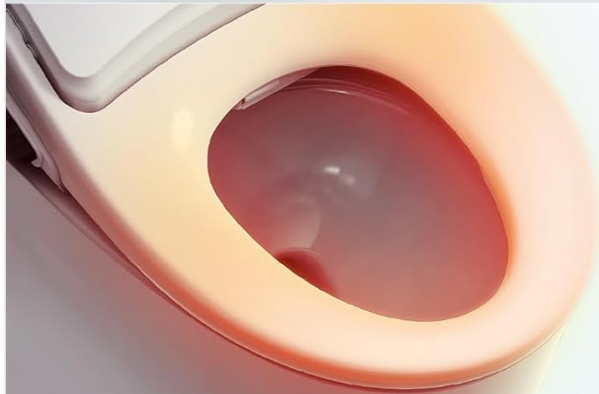
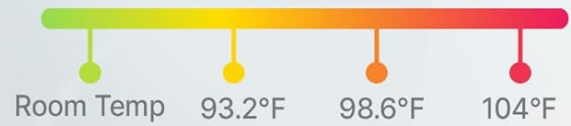
Image: Key Comfort Features

# ADJUSTABLE TEMPERATURE SETTING



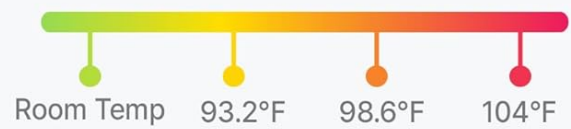
## ④ Level Water Temp

Enjoy instant comfort in all environments



## ④ Level Seat Temp

Say goodbye to cold toilet seats



## ⑤ Level Air Dryer

A Gentle and thorough drying process after each use



Image: Adjustable Temperature Settings

# ADVANCED NOZZLE TECHNOLOGY

5 LEVEL POSITION & 5 LEVEL PRESSURE



Image: Advanced Nozzle Technology

## Inus, Pleasant living experience

Video: An overview of the Inus bidet, highlighting its features and contribution to a pleasant living experience.

## 6. MAINTENANCE

Regular cleaning ensures optimal performance and hygiene of your Inus N22 bidet seat.

### 6.1 Nozzle Cleaning

The stainless steel nozzle features an automatic self-cleaning function before and after each use. For deeper cleaning, gently wipe the nozzle with a soft cloth and mild, non-abrasive soap. Avoid harsh chemicals.

### 6.2 Exterior Cleaning

Wipe the exterior surfaces of the bidet seat with a soft, damp cloth. Use mild soap if necessary. Do not use abrasive cleaners, brushes, or chemical solvents as these can damage the finish.

## 6.3 Detachable Design

The bidet unit is designed to be easily detachable with one touch for thorough cleaning of the toilet bowl and surrounding areas.



Image: Smart & Hygienic Features

## 7. TROUBLESHOOTING

If you encounter issues with your Inus N22 bidet seat, refer to the following common solutions:

- **No Power:** Ensure the power cord is securely plugged into a functional electrical outlet. Check your circuit breaker.
- **No Water Flow:** Verify that the toilet's water shutoff valve is fully open and that the T-valve connections are secure.
- **Buttons Not Responding:** Ensure you are seated properly on the bidet seat, as some functions require body sensing. Check for any obstructions on the control panel.
- **Water Leaks:** Tighten all hose connections. If leaks persist, turn off the water supply and contact customer support.

## 8. SPECIFICATIONS

| Feature                        | Detail   |
|--------------------------------|--|
| Brand                          | Inus   |
| Model                          | N22  |
| Color                          | White  |
| Material                       | Stainless Steel (Nozzle), ABS (Handle)                                       |
| Style                          | Side Panel - Heated Seat & Air Dryer   |
| Shape                          | Oval   |
| Product Dimensions             | 20.3"L x 14.9"W  |
| Item Weight                    | 10.58 pounds   |
| Installation Method            | Surface-Mounted  |
| Temperature Range (Water/Seat) | 93.2-104 Degrees Fahrenheit  |
| Number Of Pieces               | 1  |
| Special Features               | Adjustable, Kids Mode, Air Dryer, Self Cleaning, Tankless, Smart Touch Panel |
| UPC                            | 886828886961   |

## 9. WARRANTY AND SUPPORT

---

### 9.1 Warranty Information

The Inus N22 Electric Heated Bidet Toilet Seat comes with a complimentary 2-Year Warranty. Please retain your proof of purchase for warranty claims.

### 9.2 Customer Support

For further assistance, technical support, or warranty inquiries, please visit the official Inus Store on Amazon:[Inus Store](#).