

Lesim 602

Lesim Smart Light Switch User Manual

Model: 602

1. INTRODUCTION

Thank you for choosing the Lesim Smart Light Switch. This Wi-Fi enabled touch wall switch is designed to provide convenient control over your lighting, compatible with popular smart home platforms like Amazon Alexa and Google Home. This manual provides detailed instructions for installation, setup, operation, and troubleshooting to ensure a seamless experience.



Figure 1.1: Lesim Smart Light Switch (White Single Pole)

2. FEATURES

- **Easy Installation:** Replaces any single-pole light switch. Requires a neutral wire. Not compatible with 3-way (multi-switch) lights or metal face plates. Supports 2.4GHz Wi-Fi only.
- **Touch Control:** Capacitive touch panel for easy on/off control. Features a scratch-resistant glass panel for a sleek design.
- **Voice Control:** Compatible with Amazon Alexa (Echo/Dot/Tap) and Google Assistant for hands-free

operation. No hub required.

- **Remote Control & Time Set:** Control lights from anywhere using the Smart Life App. Create custom schedules and timers for automatic operation (e.g., on at sunset, off at bedtime).
- **Group Control & Device Sharing:** Create groups within the Smart Life App to control multiple lights simultaneously. Share control of your smart switch with family members.

3. SAFETY INFORMATION

WARNING: RISK OF ELECTRIC SHOCK. Improper installation can be dangerous or illegal. Consult a qualified electrician if you are unfamiliar or uncomfortable with electrical work.

- Always turn off power at the circuit breaker before installation, removal, or maintenance.
- Ensure the switch is rated for your electrical system (125V, 15A max).
- A neutral wire is required for operation. Verify its presence in your switch box before purchase and installation.
- Do not install with wet hands or when standing on wet or damp surfaces.
- This device is for indoor use only.

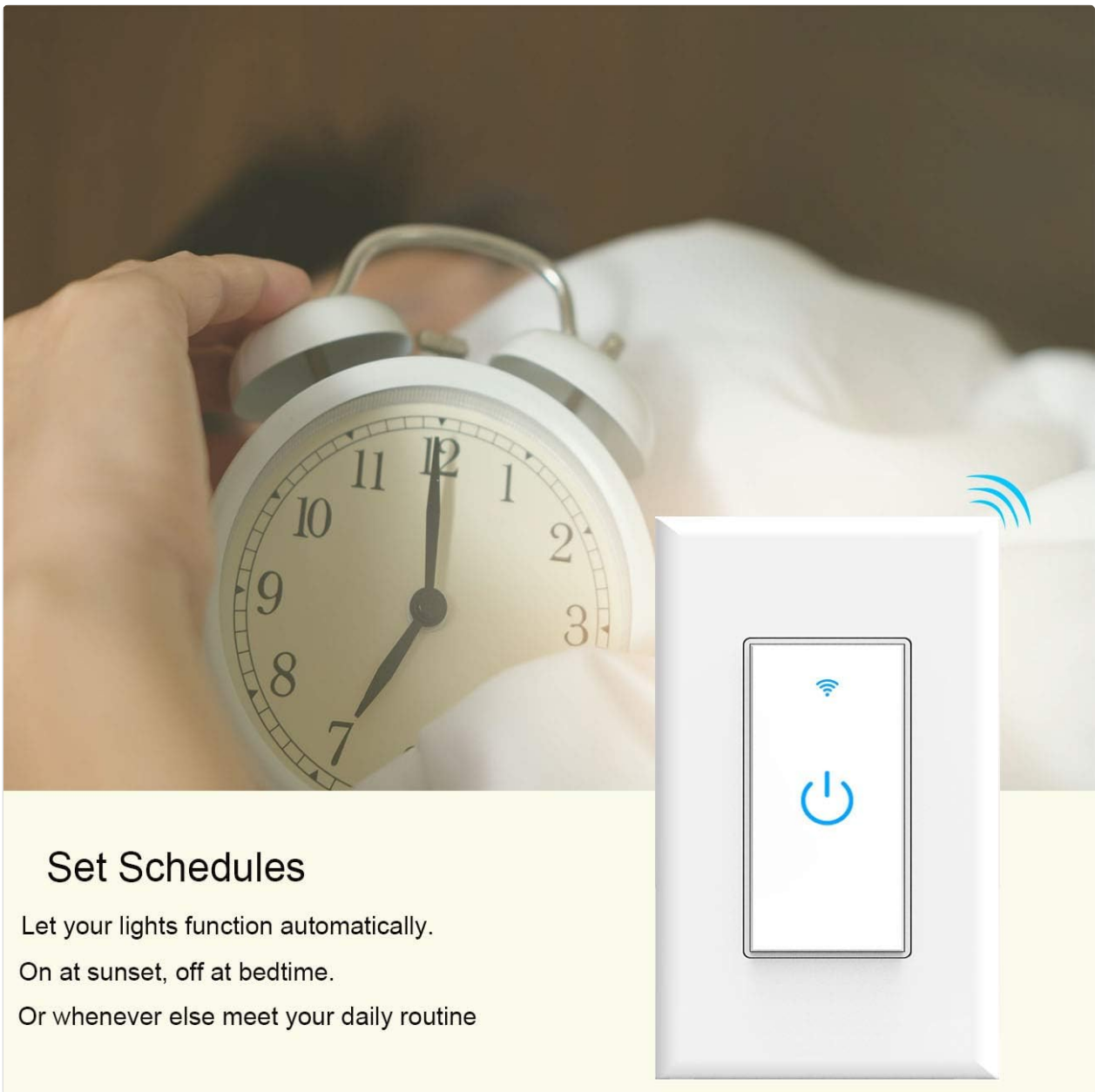
4. INSTALLATION

Before beginning, ensure the power is OFF at the circuit breaker. This smart switch is designed for single-pole applications only (controlling one light from one location).

4.1. Verify Compatibility

- Confirm you have a neutral wire (usually white) in your switch box.
- Ensure your Wi-Fi network is 2.4GHz. This switch does not support 5GHz Wi-Fi.

4.2. Physical Dimensions



Set Schedules

Let your lights function automatically.

On at sunset, off at bedtime.

Or whenever else meet your daily routine

Figure 4.1: Switch Dimensions (4.1 x 1.8 x 1.5 inches)

4.3. Wiring Instructions

1. Turn off power at the circuit breaker for the switch you are replacing.
2. Remove the old switch from the wall box. Carefully label each wire connected to the old switch: Live (Line), Load, Neutral, and Ground.
3. Connect the wires to the Lesim Smart Light Switch according to the diagram below. Use wire nuts to secure connections.
 - **Live Wire (L-IN):** Connect to your household's live (hot) wire.
 - **Load Wire (LOAD):** Connect to the wire going to your light fixture.
 - **Neutral Wire (N-IN):** Connect to the neutral wire bundle in your wall box.
 - **Ground Wire:** Connect to the bare copper or green ground wire.
4. Carefully push the switch into the wall box, ensuring wires are not pinched. Secure the switch with screws.
5. Attach the wall plate.
6. Restore power at the circuit breaker. The switch indicator light should begin blinking, indicating it's ready

for network setup.

Easy Setup With Smart Life APP

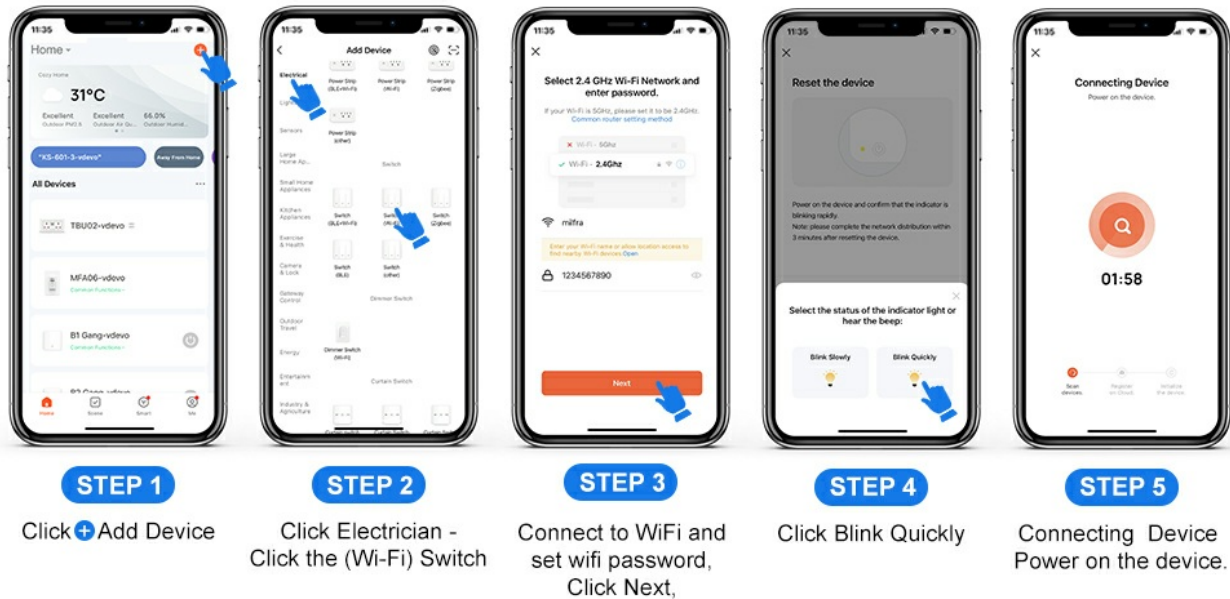


Figure 4.2: Wiring Diagram

5. SETUP (SMART LIFE APP)

The Lesim Smart Light Switch uses the Smart Life app for configuration and control. Ensure your mobile device is connected to a 2.4GHz Wi-Fi network.

1. **Download the App:** Search for "Smart Life" in the App Store (iOS) or Google Play Store (Android) and download it.
2. **Register/Login:** Open the Smart Life app and register for a new account or log in if you already have one.
3. **Add Device:** Tap the "+" icon in the top right corner or "Add Device". Select "Electrician" > "Switch (Wi-Fi)".
4. **Connect to Wi-Fi:** Enter your 2.4GHz Wi-Fi network name and password.
5. **Confirm Indicator State:** Follow the app's instructions to confirm the switch's indicator light is blinking rapidly. If not, press and hold the switch button for 5-10 seconds until it blinks rapidly.
6. **Pairing:** The app will automatically scan and connect to the switch. Once connected, you can rename the switch for easier identification (e.g., "Living Room Light").

PRODUCT SPECIFICATION



Type	Smart Wall Light Switch
Model	KS-602
Power Supply Mode	Neutral+ Live Wire
Rated Current	15A(Max)
Rated Voltage	AC110-125V 50/60Hz
Rated Power	1650W
Wireless Frequency	2.4GHz
Wireless Standard	IEEE802.11/b/g/n

Figure 5.1: Easy Setup with Smart Life App

6. OPERATING INSTRUCTIONS

6.1. Manual Control

Simply touch the capacitive panel on the switch to turn the connected light on or off.

6.2. Remote Control via Smart Life App

Once paired, you can control your light switch from anywhere using the Smart Life app on your smartphone or tablet. Open the app, select your switch, and tap the power icon to toggle its state.



Figure 6.1: Remote Control via Smart Life App

6.3. Voice Control (Alexa/Google Home)

Integrate your Lesim Smart Light Switch with Amazon Alexa or Google Home for voice-activated control.

1. **Link Accounts:** In the Alexa or Google Home app, navigate to the "Skills" or "Works with Google" section. Search for "Smart Life" and enable the skill/service. Log in with your Smart Life account credentials.
2. **Discover Devices:** Once linked, ask your voice assistant to "Discover devices" or manually initiate discovery in the app.
3. **Voice Commands:** You can now use commands like:
 - "Alexa, turn on the Living Room Light."
 - "Hey Google, turn off the kitchen lights."

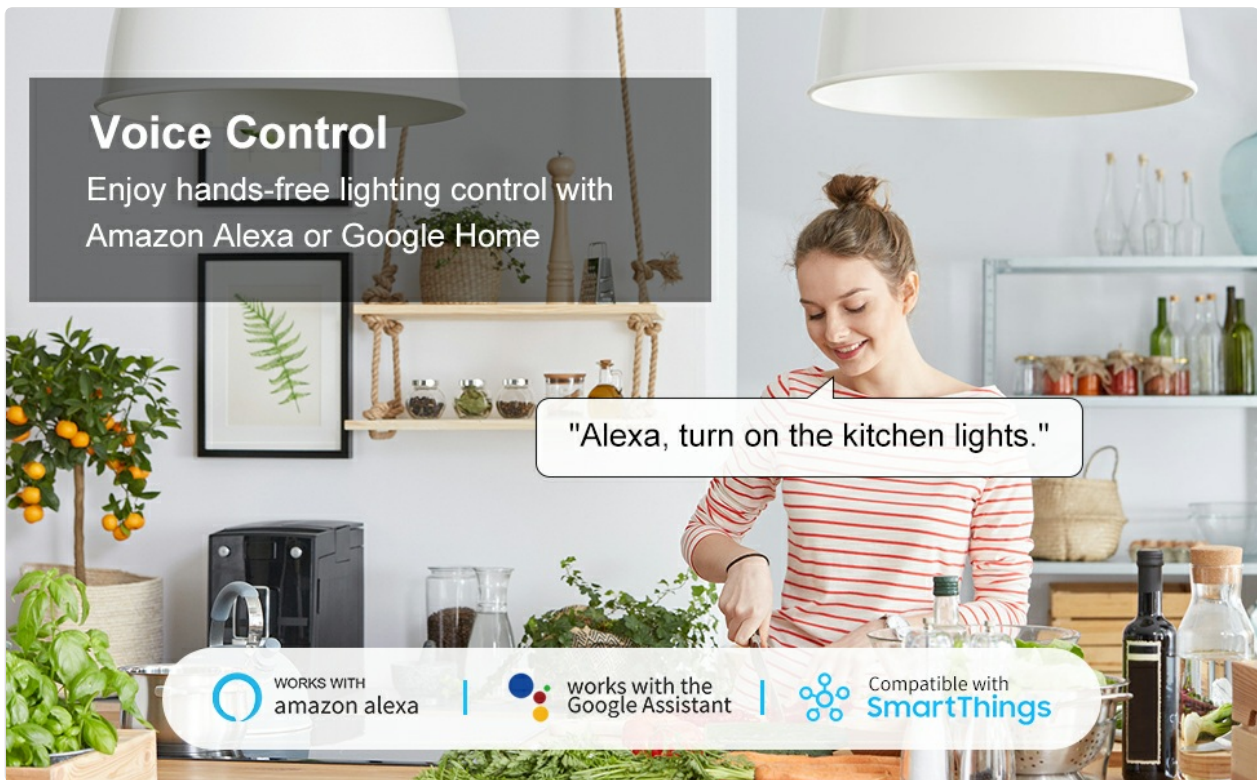


Figure 6.2: Voice Control Integration

6.4. Scheduling and Timers

Set up automated schedules to turn your lights on or off at specific times, or based on sunrise/sunset.

1. In the Smart Life app, select your switch.
2. Tap the "Schedule" or "Timer" option.
3. Create new schedules by setting desired times, days of the week, and actions (on/off). You can also set countdown timers.

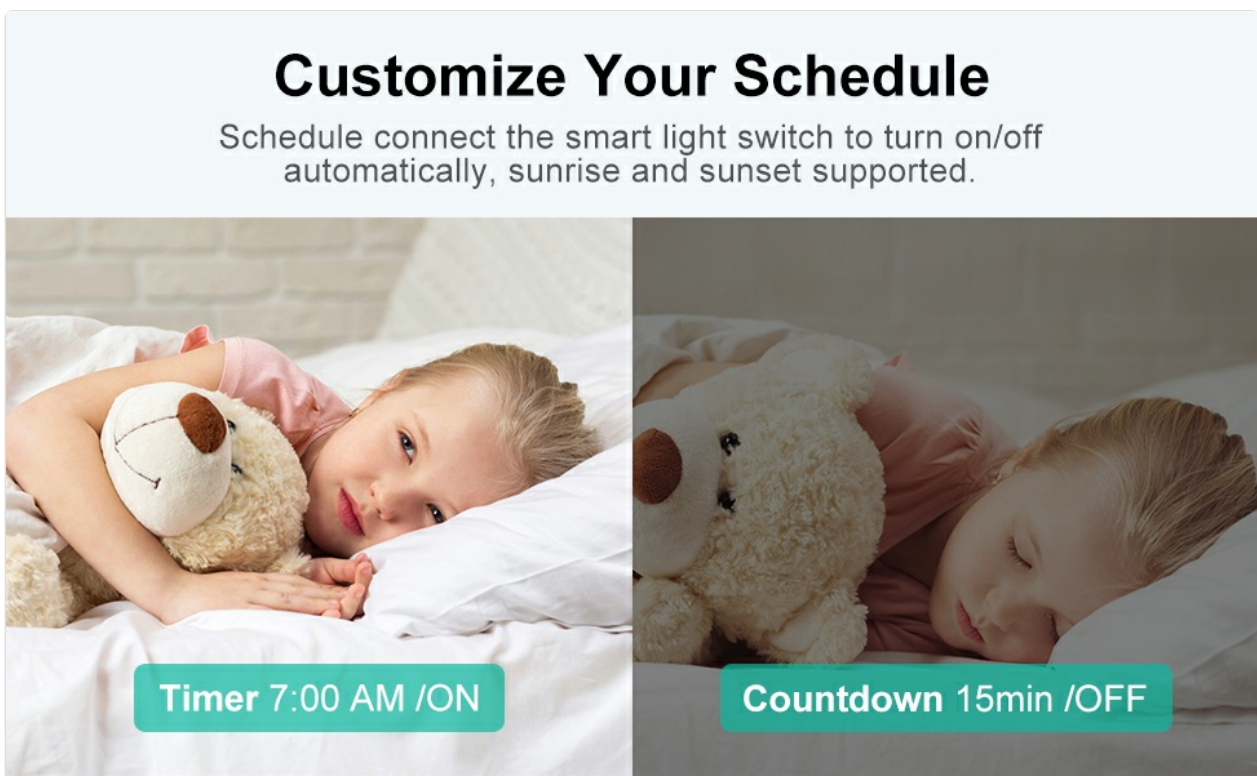


Figure 6.3: Customize Your Schedule

6.5. Group Control and Device Sharing

Manage multiple switches efficiently and share control with others.

- **Group Control:** In the Smart Life app, create a "Group" and add multiple Lesim Smart Light Switches to it. This allows you to control all lights in that group with a single command.
- **Device Sharing:** Share control of your individual switches or groups with family members by inviting them through the Smart Life app. They will need their own Smart Life account.

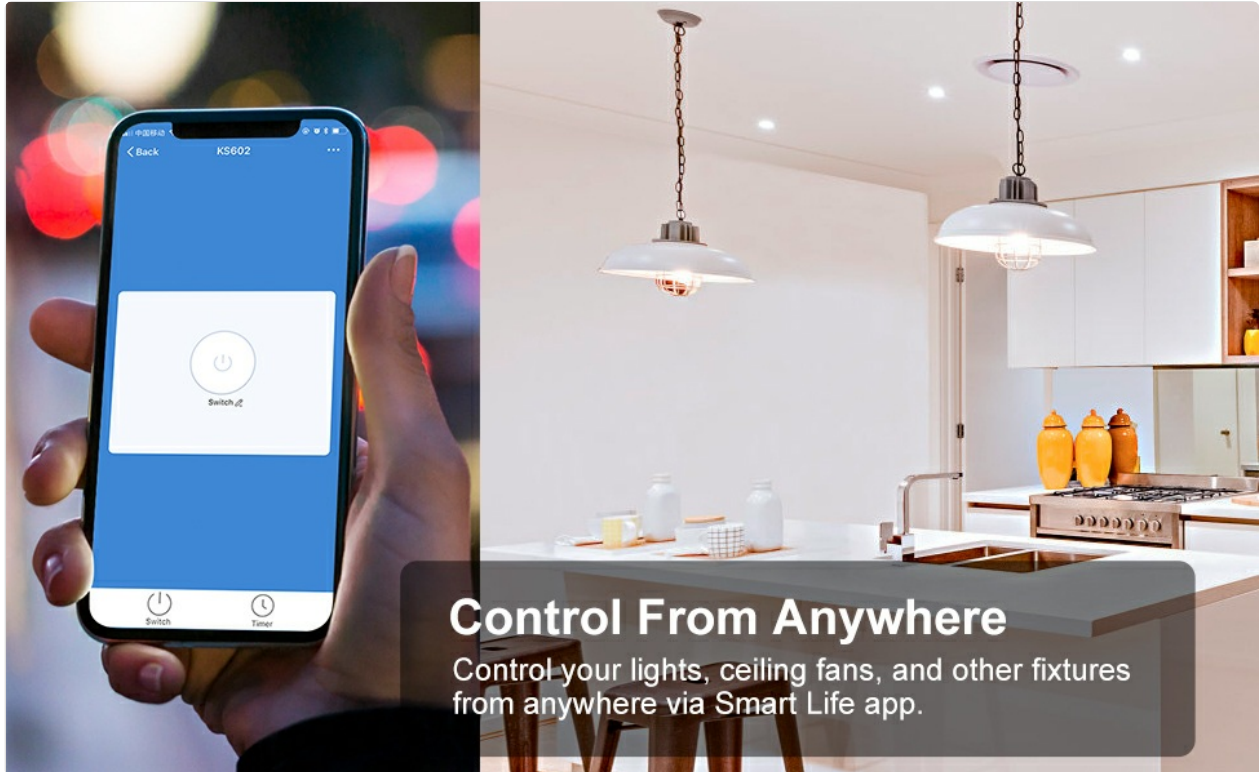


Figure 6.4: Group Control and Device Sharing

7. MAINTENANCE

- Clean the glass panel with a soft, damp cloth. Avoid abrasive cleaners or solvents.
- Ensure the switch is free from dust and debris to maintain optimal touch sensitivity.
- Periodically check for firmware updates within the Smart Life app to ensure your switch has the latest features and security enhancements.

8. TROUBLESHOOTING

Problem	Possible Cause	Solution
Switch not responding to touch.	No power; loose wiring; internal malfunction.	Check circuit breaker. Verify wiring connections (ensure power is off first). If problem persists, contact support.
Switch not connecting to Wi-Fi.	Incorrect Wi-Fi password; 5GHz network; weak signal; switch not in pairing mode.	Ensure correct 2.4GHz Wi-Fi password. Move router closer or use a Wi-Fi extender. Reset switch to pairing mode (rapid blinking).

Problem	Possible Cause	Solution
Voice control not working.	Smart Life skill/service not linked; device not discovered; incorrect command.	Ensure Smart Life account is linked in Alexa/Google Home app. Ask voice assistant to "Discover devices". Use correct device name in commands.
Light flickers or does not turn off completely.	Incompatible bulb type (e.g., some non-dimmable LEDs); no neutral wire.	Ensure you are using compatible bulbs. Verify neutral wire connection.
Switch frequently disconnects from Wi-Fi.	Weak Wi-Fi signal; network interference.	Improve Wi-Fi signal strength near the switch (e.g., Wi-Fi extender). Reduce interference from other devices.

9. SPECIFICATIONS

Attribute	Value
Model	KS-602
Power Supply Mode	Neutral + Live Wire
Rated Current	15A (Max)
Rated Voltage	AC110-125V 50/60Hz
Rated Power	1650W
Wireless Frequency	2.4GHz
Wireless Standard	IEEE802.11 b/g/n
Operation Mode	Automatically, Off, Smart Switch
Controller Type	Amazon Alexa, Google Assistant, SmartThings, IFTTT
Item Weight	5.6 ounces
Dimensions	5.43 x 4.06 x 2.01 inches

10. WARRANTY AND SUPPORT

Lesim products are designed for reliability and performance. For specific warranty details, please refer to the warranty card included with your product or visit the official Lesim brand store.

If you encounter any issues or have questions not covered in this manual, please contact Lesim customer support through the Smart Life app or visit the Lesim brand store for assistance.

[Visit the Lesim Brand Store](#)

