

Breo scalpmini

Breo Scalp Mini Portable Head Massager User Manual

Model: scalpmini

1. PRODUCT OVERVIEW

The Breo Scalp Mini is a portable, rechargeable head massager designed for scalp relaxation and stress relief. It features IPX7 waterproofing, removable massage nodes, and a bamboo wood charging base.

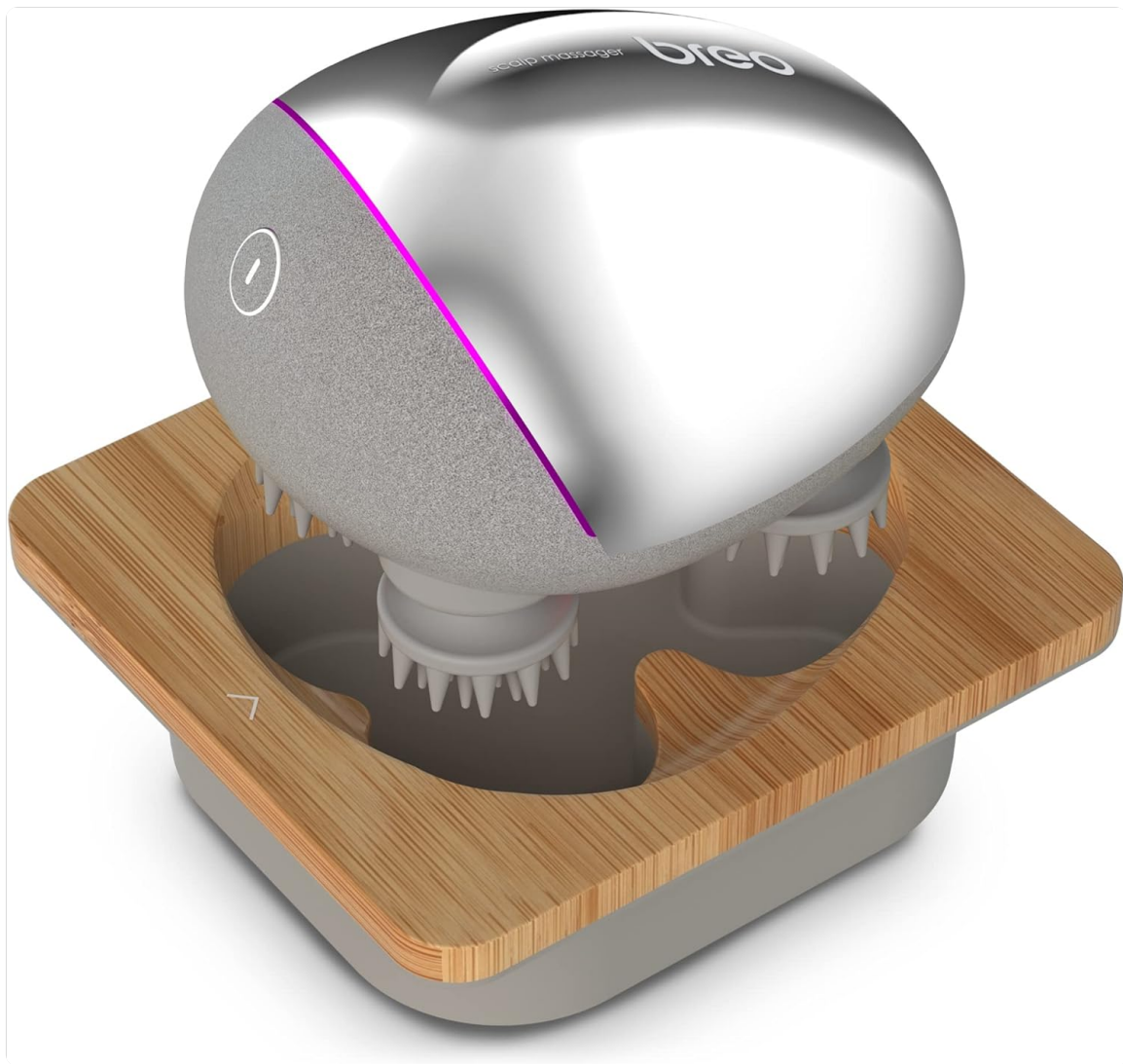


Image: Breo Scalp Mini Portable Head Massager with its bamboo charging base.

Key Features:

- **Multi-function:** Interchangeable massage tips for various body parts (legs, hands, shoulders, neck, etc.).
- **Compact & Ergonomic Design:** Fits comfortably in hand, suitable for home, office, or travel.
- **Safe Materials:** Food-grade silica gel massage head, gentle and non-irritating to skin.
- **IPX7 Waterproof:** Suitable for use in the shower.
- **Rechargeable:** Convenient bamboo-trimmed charging base.

Multifunctional Scalp Massager



IPX 7
Waterproof



Red
Light



Removable
Cleaning heads



Magnetic
Charging



Image: The Breo Scalp Mini showcasing its multifunctional features including IPX7 waterproofing, red light, removable cleaning heads, and magnetic charging.

2. SAFETY INFORMATION

Please read and understand all safety instructions before using the Breo Scalp Mini.

- Always use the massager on the lowest setting when first using it.
- Avoid using it on broken or irritated skin.
- Do not use it on the face or genitals.
- Keep it away from water when not in use, unless specifically designed for wet use (IPX7).
- Always unplug the massager when not in use.
- Do not use it while sleeping or bathing.
- Always follow the instructions provided with the massager.

3. SETUP AND CHARGING

Before first use, ensure the device is fully charged.

1. Place the Breo Scalp Mini onto its bamboo wood charging base.
2. Connect the charging base to a power source using the provided USB cable.
3. The device will indicate charging status (e.g., a purple light may appear).
4. Allow the device to charge completely before initial use.



Image: The Breo Scalp Mini resting on its bamboo charging base, illustrating the magnetic charging connection and the red light feature.

4. OPERATING INSTRUCTIONS

Follow these steps for effective use of your Breo Scalp Mini.

1. **Power On:** Press and hold the power button located on the device until the massage nodes begin to move.

2. **Select Massage Tip:** Choose the appropriate massage tip for the desired body part. The device comes with interchangeable tips.
3. **Adjust Intensity:** Short press the power button to cycle through available speed settings (e.g., low and high).
4. **Application:** Gently move the massager over the desired area in a rolling motion. For scalp massage, ensure even coverage.
5. **Power Off:** Press and hold the power button again to turn off the device.



Image: The Breo Scalp Mini being used in different environments, demonstrating its versatility for relaxation in various settings.

Using in the Shower:

The IPX7 waterproof rating allows for safe use in the shower for deep scalp cleansing.

Deep Scalp Cleansing

Revitalize your roots for a healthier scalp



Image: A woman using the Breo Scalp Mini to perform deep scalp cleansing while showering.

Red Light Feature:

The device may include a red light feature for enhanced scalp wellness. This feature activates automatically with the massage function.

Red Light Stronger Hair

Advanced red light technology for optimal scalp wellness



Image: A woman applying the Breo Scalp Mini to her scalp, with the red light feature visibly active.

Multi-body Part Massage:

The interchangeable massage nodes allow for use on various body areas beyond the scalp.

CUSTOMIZED MESSAGE



Image: Demonstrations of the Breo Scalp Mini being used on different body parts such as the neck, legs, back, and arm.

Official Product Video:

Video: An official product video from Breo demonstrating the Scalp Mini Head Massager's features and usage.

5. MAINTENANCE AND CARE

Proper maintenance ensures the longevity and hygiene of your device.

- **Cleaning:** After each use, detach the massage tips by gently pulling them off. Clean the tips with mild soap and water, then rinse thoroughly.
- **Drying:** Allow all components to air dry completely before reattaching the massage tips or storing the device.
- **Storage:** Store the massager in a cool, dry place, preferably on its charging base.

DETACHABLE MESSAGE HEAD

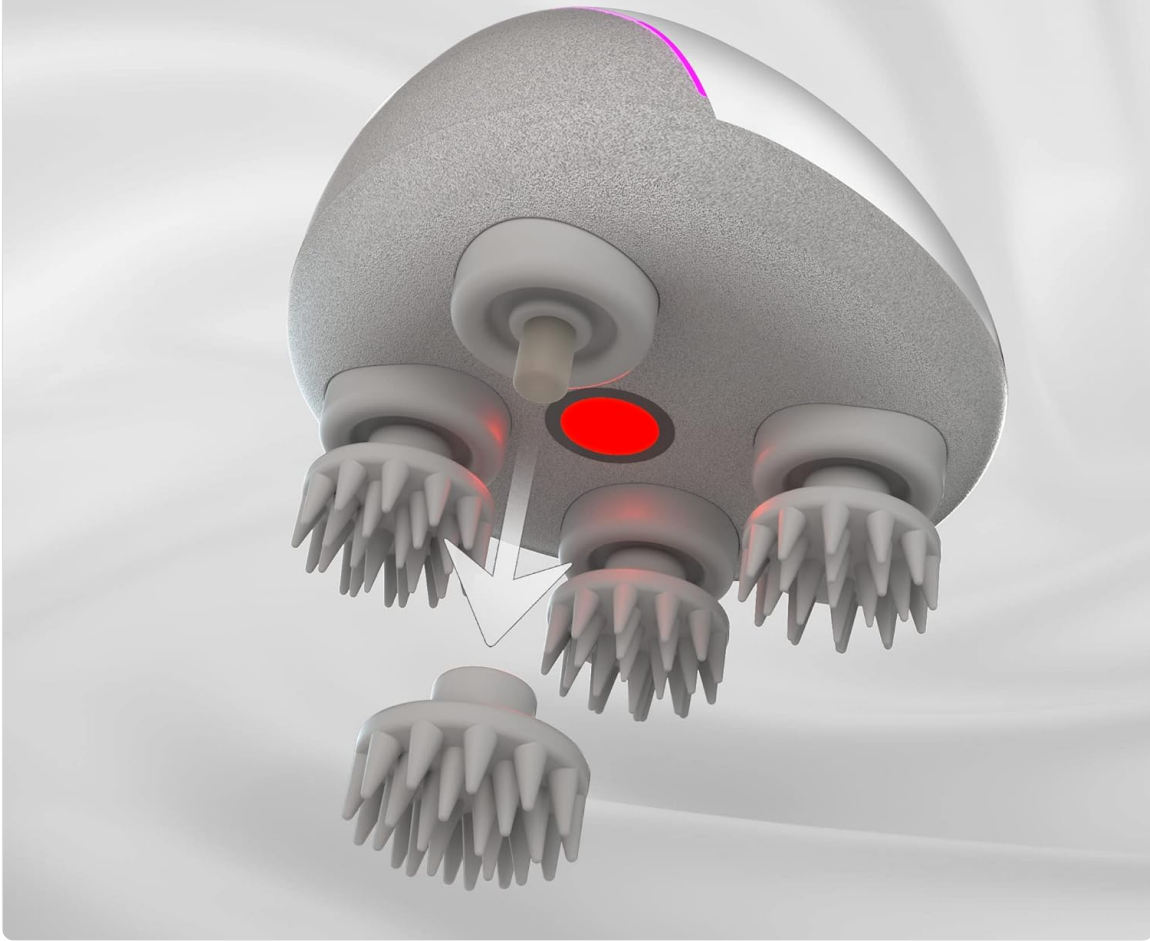


Image: A close-up view of the Breo Scalp Mini demonstrating its detachable massage heads for easy cleaning and customization.

6. TROUBLESHOOTING

If you encounter any issues with your Breo Scalp Mini, please refer to the following common solutions:

- **Device not turning on:** Ensure the device is fully charged. Connect it to the charging base and verify the charging indicator light is active.
- **Massage nodes not moving:** Check if the device is powered on and fully charged. If the issue persists, contact customer support.
- **Reduced massage intensity:** The battery might be low. Recharge the device.
- **Unusual noise:** Turn off the device immediately and inspect the massage nodes for any obstructions. If none are found and the noise continues, discontinue use and contact customer support.




7. SPECIFICATIONS



Specification	Detail
Brand	Breo
Model Number	scalpmini
Product Dimensions	7.24 x 7.09 x 3.94 inches
Item Weight	1.32 Pounds (0.6 Kilograms)
Power Source	Battery Powered
Batteries	1 A battery required (included)
Material	Wood (charging base), Food-grade silica gel (massage heads)
Waterproof Rating	IPX7

8. WARRANTY AND SUPPORT

For warranty information, product support, or to inquire about replacement parts, please contact Breo customer service. Refer to the product packaging or the official Breo website for contact details.

Related Documents - scalpmini

	<p>Breo iDream 5S Head Massager User Manual - Features, Functions, and Safety</p> <p>Comprehensive user manual for the Breo iDream 5S head massager. Learn about its features, functions, operating instructions, troubleshooting, and safety precautions.</p>
	<p>BREO iDream3 Head Massager User Manual</p> <p>Comprehensive user manual for the BREO iDream3 Head Massager, detailing features, operation, preparation, precautions, troubleshooting, and technical specifications.</p>
	<p>Breo iDream 3 Eye & Head Massager User Manual Features, Operation & Safety</p> <p>Comprehensive user manual for the Breo iDream 3 Eye & Head Massager. Learn about its features, how to operate, safety precautions, troubleshooting, and technical specifications.</p>
	<p>Breo Scalp 3L User Manual</p> <p>User manual for the Breo Scalp 3L, a laser scalp massager for hair growth. This document provides instructions and safety information.</p>

 The image shows the Breco Neck N5 mini massager, a small, dark-colored device with a circular head and a strap. The text "Breco Neck N5 mini" and "SIMPLY RELAX" are visible.	<p>Breco Neck N5 mini User Manual: Features, Operation, and Specifications</p> <p>Comprehensive user manual for the Breco Neck N5 mini massager. Learn about its features, how to operate, charge, troubleshoot, and product specifications. Includes safety precautions and maintenance.</p>
 The image shows the Breco Neck Massager P4, a larger, light-colored device with a circular head and a strap. The text "breco" and "Neck Massager P4" are visible.	<p>Breco Neck Massager P4 User Manual - Instructions and Safety Information</p> <p>Official user manual for the Breco Neck Massager P4. Provides detailed instructions on operation, safety precautions, maintenance, troubleshooting, and product specifications for this electronic health care product.</p>