

## Manuals+

[Q & A](#) | [Deep Search](#) | [Upload](#)

manuals.plus /

- › [DBPOWER](#) /
- › [DBPOWER G16 Portable Car Jump Starter User Manual](#)

## DBPOWER G16

# DBPOWER G16 Portable Car Jump Starter User Manual

Model: G16

## 1. INTRODUCTION

The DBPOWER G16 Portable Car Jump Starter is a powerful and versatile device designed to provide emergency jump-starting for vehicles, as well as portable power for various electronic devices. Its compact and lightweight design makes it an essential tool for any driver, offering peace of mind on the road.



Image: The DBPOWER G16 Portable Jump Starter is suitable for a wide range of vehicles, from cars and motorcycles to SUVs, trucks, lawnmowers, and even yachts.

## 2. SAFETY INFORMATION

**WARNING: Please read this user manual carefully before operating the jump starter. Improper use can lead to device damage, property damage, or personal injury.**

- Always ensure proper polarity when connecting the jumper clamps to the vehicle battery. Connect the red clamp to the positive (+) terminal and the black clamp to the negative (-) terminal.
- Do not connect the red and black clamps together, as this may cause sparks or damage.
- Avoid charging the jump starter overnight.
- Do not use or store the jump starter in a long-term unused condition until the battery is completely without electricity.
- The rechargeable battery operates effectively within a temperature range of -4°F to 140°F (-20°C to 60°C). Using the jump starter outside this specified temperature range can result in battery damage and expansion.
- It is crucial not to place the jump starter inside the vehicle during or immediately after use, as the battery generates heat during the engine start process. Ensure that the power button is turned off and allow the device to cool down before attempting to start the engine again or storing it.
- Keep out of reach of children.



*Image: The DBPOWER G16 features multiple intelligent protection systems for safe operation.*

## 3. WHAT'S IN THE BOX

Upon opening your DBPOWER G16 package, you should find the following items:

- 1 x DBPOWER G16 Jump Starter Unit
- 1 x Intelligent Jumper Clamps
- 1 x USB-C Charging Cable
- 1 x Storage Case

- 1 x User Manual



*Image: All components included with the DBPOWER G16 Jump Starter.*

## 4. PRODUCT OVERVIEW

The DBPOWER G16 is a compact and powerful device designed for emergency vehicle jump-starting and portable power. It features multiple ports for charging various electronic devices and a built-in LED flashlight for convenience.

### Key Components:

- **Power Button & Function Key:** Activates the unit and cycles through flashlight modes.
- **LED Power Meter:** Indicates battery charge level.
- **12V Jumping Port:** Connects to the intelligent jumper clamps for jump-starting.
- **5V/2.1A USB Output:** Standard USB charging port.
- **Smart 5V/9V/12V USB Output:** Provides faster charging for compatible devices.
- **Type-C 5V/3A Input/Output:** For charging the jump starter and compatible devices.
- **LED Flashlight:** Built-in light with multiple modes.



Image: Detailed view of the DBPOWER G16's multifunctional ports and controls.

## 5. SETUP: INITIAL CHARGING

Before first use, or if the battery indicator shows low charge, fully charge your DBPOWER G16 Jump Starter.

1. Connect the provided USB-C charging cable to the Type-C Input/Output port on the jump starter.
2. Connect the other end of the USB-C cable to a 5V 2A USB wall adapter (not included).
3. Plug the wall adapter into a power outlet.
4. The LED power meter will illuminate, indicating the charging progress. A full charge typically takes approximately 4 hours.
5. Once fully charged, all LED indicators will be solid. Disconnect the jump starter from the power source.



Image: Charging the DBPOWER G16 Jump Starter.

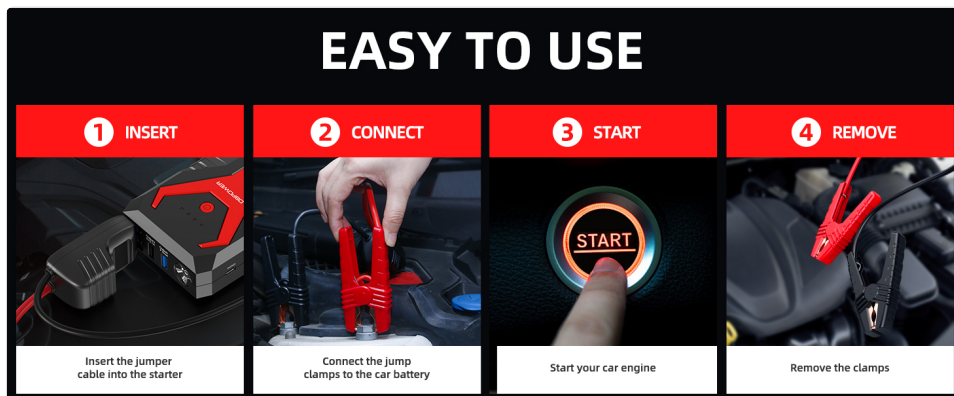
## 6. OPERATING INSTRUCTIONS: JUMP STARTING A VEHICLE



Follow these steps to safely jump-start your vehicle:

1. **Insert:** Insert the intelligent jumper cable into the 12V Jumping Port on the jump starter. Ensure it is fully seated.
2. **Connect:** Connect the red (+) clamp to the positive terminal of your vehicle's battery and the black (-) clamp to the negative terminal. Ensure a secure connection.
3. **Start:** Start your car engine. If the engine does not start immediately, wait 30 seconds before attempting again. Do not crank for more than 3 seconds at a time.
4. **Remove:** Once the vehicle starts, immediately remove the jumper clamps from the vehicle battery, then disconnect the intelligent jumper cable from the jump starter.

**Note:** This car battery jump starter delivers powerful performance to bring your vehicle back to life even if the vehicle has a completely dead battery at 0V. Please make sure this battery jump starter is fully recharged if you want to use it on a car with a dead battery.



*Image: Easy-to-follow steps for jump-starting your vehicle.*

## 7. MULTIFUNCTION LED FLASHLIGHT

The DBPOWER G16 features a built-in LED flashlight with three modes for various situations:

- **Lighting Mode:** Provides continuous illumination for general use.
- **SOS Mode:** Emits a Morse code SOS signal for emergency situations.
- **Strobe Mode:** Produces a flashing light for signaling or attracting attention.

To cycle through the modes, press the power button repeatedly. To turn off the flashlight, press and hold the power button.



*Image: The 3-in-1 multifunctional LED flashlight is useful for emergencies and nighttime activities.*

## 8. POWER BANK FUNCTIONALITY

The 80.66Wh high-capacity battery of the DBPOWER G16 can also serve as a power bank to charge your portable

electronic devices.

- **Output 1:** 5V 2.1A USB Output Port
- **Output 2:** 5V/9V/12V USB Smart Output Port (for faster charging)
- **Output 3:** 5V 3A Type-C Output Port

The device can support charging an iPad up to 6 times, an iPhone up to 8 times, a Kindle up to 20 times, an iWatch up to 15 times, and AirPods up to 30 times on a single full charge.



Image: The DBPOWER G16 can charge multiple electronic devices.



Image: The 12V regulated output can power compatible accessories like an air pump.

## 9. MAINTENANCE

To ensure the longevity and optimal performance of your DBPOWER G16 Jump Starter, follow these maintenance guidelines:

- Store the device in a cool, dry place away from direct sunlight and extreme temperatures.
- Avoid prolonged exposure to temperatures outside the recommended operating range of -4°F to 140°F (-20°C to 60°C).
- Do not leave the jump starter completely discharged for extended periods. Recharge it periodically, even if not in use, to maintain battery health.
- Clean the exterior with a soft, damp cloth. Do not use harsh chemicals or abrasive cleaners.
- Ensure the ports are free from dust and debris.



Image: The DBPOWER G16 is designed to be water-resistant and dust-proof for durability in various conditions.

## 10. TROUBLESHOOTING

If you encounter issues with your DBPOWER G16 Jump Starter, consider the following:

- **Device not turning on:** Ensure the unit is fully charged. Check the charging cable and adapter for proper connection.
- **Vehicle not starting:**
  - a. Verify that the jump starter is fully charged.
  - b. Ensure the jumper clamps are securely connected to the correct battery terminals (red to positive, black to negative).
  - c. Check if the vehicle battery is completely dead (0V). If so, ensure the jump starter has sufficient charge for a 0V start.
  - d. Do not crank the engine for more than 3 seconds at a time. Allow 30 seconds between attempts.
  - e. Ensure the vehicle's engine size is within the jump starter's capacity (up to 10.0L Gas / 8.0L Diesel).
- **Overheating:** If the device feels excessively hot, disconnect it immediately and allow it to cool down before further use. Refer to the safety guidelines regarding operating temperature.
- **Charging issues:** Try a different USB-C cable or wall adapter to rule out faulty accessories.

If problems persist, please contact customer support.

## 11. SPECIFICATIONS

Feature	Specification
Brand	DBPOWER
Model	G16
Peak Output Current	3000 Amps


Feature	Specification
Battery Capacity	80.66Wh (equivalent to 21800mAh at 3.7V)
Engine Compatibility (Gas)	Up to 10.0L
Engine Compatibility (Diesel)	Up to 8.0L
USB Output 1	5V/2.1A
USB Output 2 (Smart)	5V/9V/12V
Type-C Input/Output	5V/3A
Item Weight	1.35 pounds
Product Dimensions	7.48 x 3.54 x 1.57 inches
Working Temperature	-4°F to 140°F (-20°C to 60°C)
Safety Rating	RoHs Certified

## 12. WARRANTY & SUPPORT






DBPOWER is committed to providing excellent customer service. We offer unlimited customer service support and technical assistance for your DBPOWER G16 Jump Starter. All questions and inquiries will be responded to within 24 working hours.

For support, please refer to the contact information provided in your product packaging or visit the official DBPOWER website.

### Related Documents - G16

	<p><a href="#">DBPOWER G73 2000A Jump Starter User Manual - Car Battery Booster Guide</a></p> <p>Comprehensive user manual for the DBPOWER G73 2000A jump starter. Learn how to jump-start your car, charge devices, use the LED light, and understand specifications and safety precautions. Suitable for 8.0L Gas and 6.5L Diesel engines.</p>
---	--



	<p><a href="#">DBPOWER G57 Jump Starter User Manual: Powerful Car Battery Booster</a></p> <p>Comprehensive user manual for the DBPOWER G57 jump starter. Learn how to safely jump-start your car, charge devices, and use the LED flashlight. Includes specifications, safety precautions, and troubleshooting.</p>
	<p><a href="#">DBPOWER Portable Car Jump Starter DJS50 User Manual</a></p> <p>User manual for the DBPOWER DJS50 portable car jump starter. Includes specifications, safety precautions, and step-by-step instructions for jump-starting vehicles, charging mobile devices and laptops, using the LED flashlight, and recharging the unit. Features 18000mAh capacity and 600A peak output.</p>
	<p><a href="#">DBPOWER 12000mAh 500A Portable Car Jump Starter User Manual</a></p> <p>Comprehensive user manual for the DBPOWER 12000mAh 500A portable car jump starter. Learn how to jump-start your car, charge devices, and recharge the unit. Includes specifications and customer support information.</p>
	<p><a href="#">DBPOWER DJS80 1000A Jump Starter User Manual   Portable Car Battery Booster</a></p> <p>Comprehensive user manual for the DBPOWER DJS80 1000A jump starter. Learn how to jump start your car, charge devices, use the LED light, and understand safety precautions. Includes specifications and troubleshooting.</p>
	<p><a href="#">DBPOWER G16 Portable Car Jump Starter User Manual</a></p> <p>User manual for the DBPOWER G16 Portable Car Jump Starter. Includes specifications, operating instructions, safety precautions, and troubleshooting for jump starting vehicles, charging devices, and using the LED flashlight.</p>



[DBPOWER G16 Portable Car Jump Starter User Manual | Jump Start Your Car Safely](#)

Comprehensive user manual for the DBPOWER G16 Portable Car Jump Starter. Learn how to jump start your car, charge devices, use the LED flashlight, and understand safety precautions and specifications.

lang: **score:33** filesize: 1.37 M page\_count: 16 document date: 2022-03-12



[DBPOWER G16 Portable Car Jump Starter User Manual](#)

User manual for the DBPOWER G16 Portable Car Jump Starter. Includes specifications, operating instructions, safety precautions, and troubleshooting for jump starting vehicles, charging devices, and using the LED flashlight.

lang: **score:19** filesize: 1.3 M page\_count: 12 document date: 2018-12-14



[\[pdf\] Warranty](#)

DBPOWER G16 Download warranty dbpowershop v 1596608164 cdn shopify s files 1 0446 9591 2598 |||

...

lang: **score:13** filesize: 985.9 K page\_count: 12 document date: 2020-08-05