

## SMONET SMUS-W842MA-XM

# SMONET Wireless Security Camera System User Manual

Model: SMUS-W842MA-XM

## 1. INTRODUCTION

This manual provides detailed instructions for the installation, operation, maintenance, and troubleshooting of your SMONET Wireless Security Camera System (Model SMUS-W842MA-XM). Please read this manual thoroughly before using the product to ensure proper setup and functionality. This system is designed for surveillance applications in various environments such as homes, offices, shops, and warehouses.

## 2. PRODUCT OVERVIEW

The SMONET Wireless Security Camera System is an 8-channel 1080P surveillance NVR kit that includes 4 wireless IP cameras. It features advanced H.265 video compression, AI human detection, remote access capabilities, and robust outdoor cameras.

### Key Features:

- **1080P HD Resolution:** Provides clear and detailed video footage.
- **H.265 Video Compression:** Optimizes storage space and bandwidth usage while maintaining video quality.
- **AI Human Detection:** Minimizes false alarms by distinguishing human movement from other motion.
- **Remote Viewing:** Access live feeds and recordings from smart devices (iOS/Android) and PCs via Wi-Fi/2G/3G/4G/5G.
- **Email Alerts:** Receive notifications when motion is detected.
- **IP66 Waterproof Cameras:** Suitable for both indoor and outdoor use.
- **Night Vision:** Equipped with infrared illuminators for clear vision in low-light conditions up to 65 feet.
- **One-Way Audio:** Allows listening to audio from the camera's location.
- **Plug and Play Setup:** Designed for easy DIY installation.

## 3. SETUP GUIDE

Follow these steps for the initial setup of your SMONET Wireless Security Camera System.

### 3.1 NVR Connection

1. **Connect Power:** Connect the NVR to a power outlet using the provided power adapter.
2. **Connect Monitor:** Connect a PC monitor or TV to the NVR using a VGA or HDMI cable.
3. **Connect Mouse:** Plug the USB mouse into one of the NVR's USB ports.
4. **Connect to Network (Optional for Remote Access):** Connect the NVR's WAN port to your router's LAN port using the provided network cable. This enables remote viewing and email alerts.



Figure 3.1: NVR System Connection Diagram. This image illustrates how to connect the NVR to power, a monitor (VGA/HDMI), a USB mouse, and a network router for internet access.

## True Plug & Play



## Up to 8 Cameras

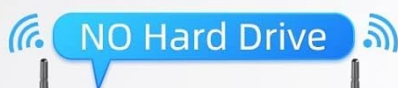


Figure 3.2: True Plug & Play Setup. This image demonstrates the simplicity of connecting the NVR to a display and cameras to power outlets for immediate operation.

### 3.2 Camera Installation

The cameras are designed for easy installation and can be mounted on walls or ceilings. Ensure each camera is connected to a stable power source from nearby outlets. Wireless connectivity between cameras and the NVR is automatic once both are powered on.

## Easy to Install

Can be Used in Multiple Scenes



Ceiling Mountable



Wall Mountable



House



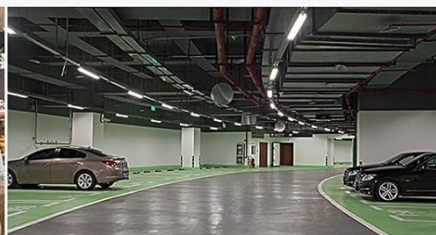
School



Warehouse



Supermarket



Garage



Office

Figure 3.3: Camera Mounting Options and Usage Scenes. This image displays how cameras can be mounted on walls or ceilings and suggests various suitable installation environments.

## 4. OPERATING INSTRUCTIONS

### 4.1 Remote Access and Viewing

Access your security system remotely from anywhere using the dedicated mobile application (iOS/Android) or PC software. Ensure your NVR is connected to the internet as described in Section 3.1.



## View Remotely Anytime



Figure 4.1: Remote Viewing Across Multiple Devices. This image illustrates the capability to view live camera feeds on various smart devices and computers.

### 4.2 AI Human Detection and Alerts

The system features AI Human Detection to reduce false alarms. You can configure specific monitoring areas within the software. When human motion is detected in these areas, the system can send email alerts or app notifications to your smart device.

# AI Human Detection & Email Alert

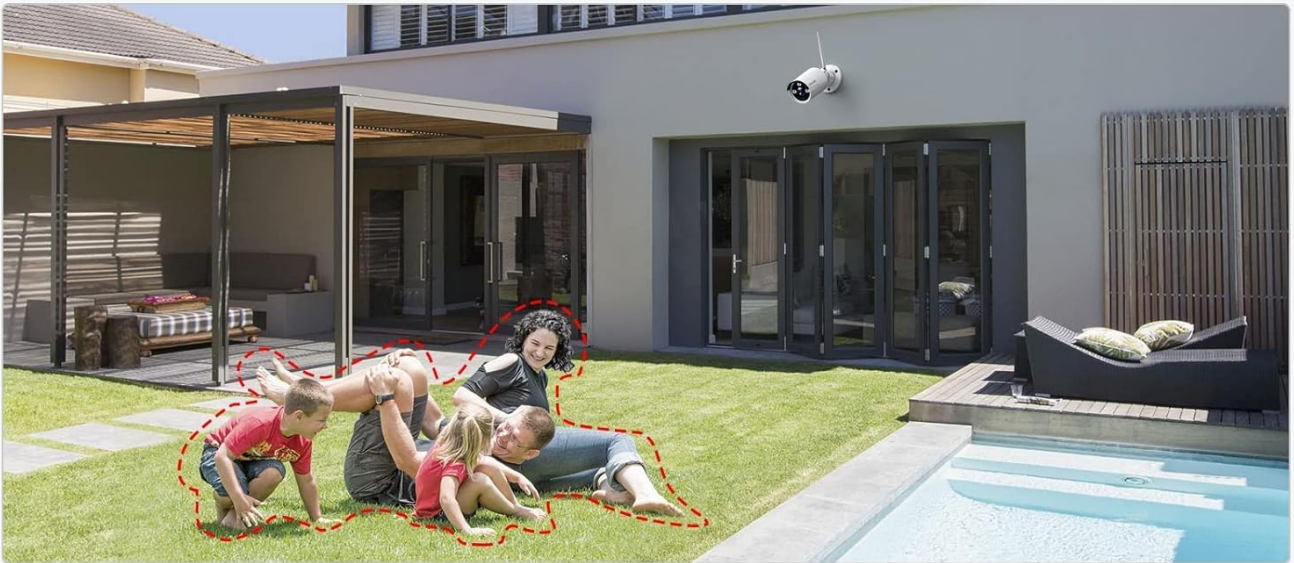


Figure 4.2: AI Human Detection and Alert System. This image demonstrates how the system identifies human movement and sends alerts to a smartphone.

## 4.3 One-Way Audio

The cameras support one-way audio, allowing you to listen to sounds from the camera's vicinity through the remote viewing application.

## One Way Audio

One-Way Audio Recording Makes You Listen to People on Your Property Remotely.

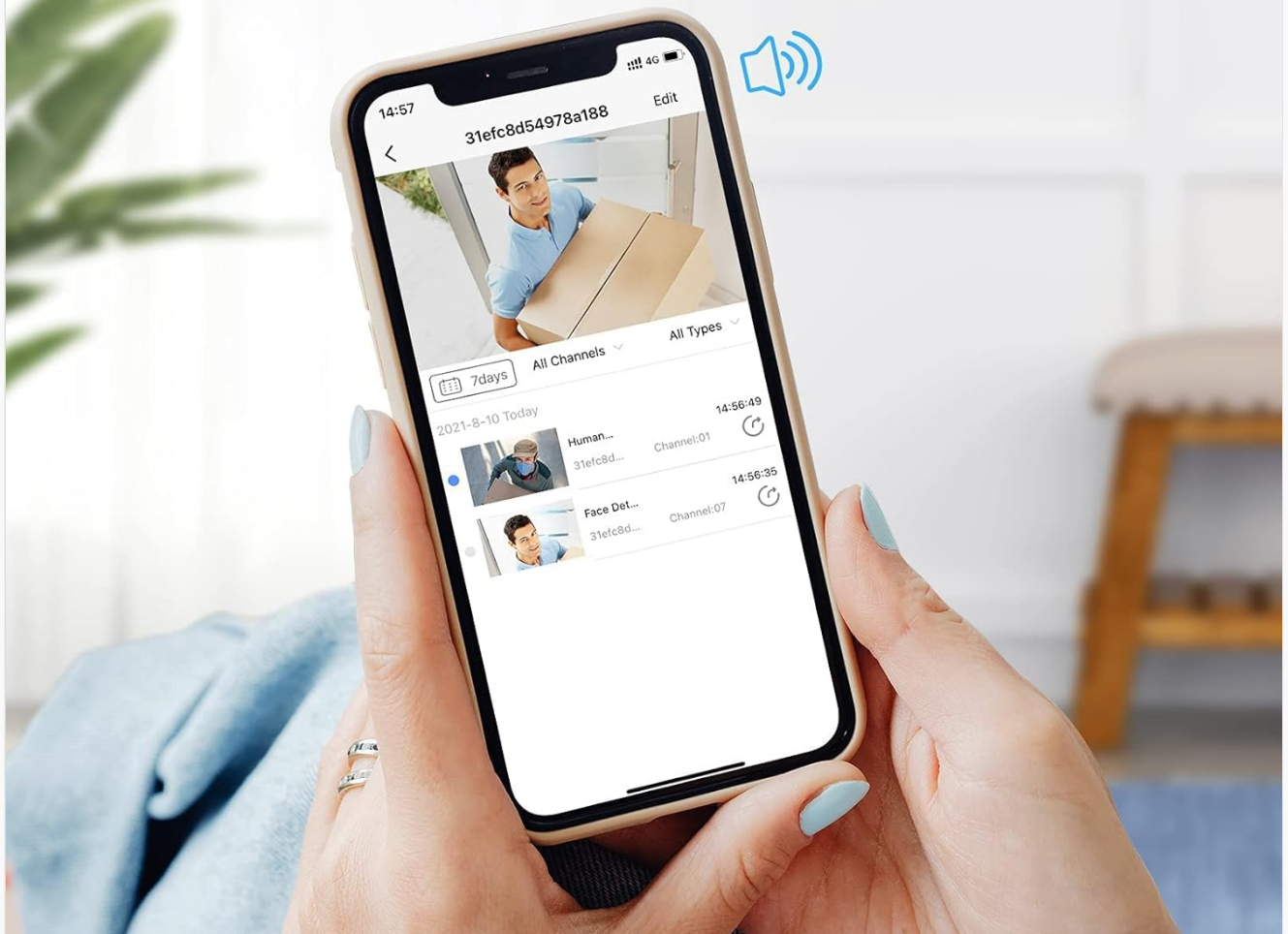


Figure 4.3: One-Way Audio Feature. This image illustrates the ability to listen to audio from the camera's location via a smartphone app.

### 4.4 Video Quality and Night Vision

The system provides 1080P Super HD images for clear monitoring. Cameras are equipped with night vision capabilities, offering clear black and white footage in complete darkness.



## 1080P Super HD Images



Figure 4.4: 1080P Super HD Image Comparison. This image highlights the superior clarity of 1080P resolution compared to 720P.





Figure 4.5: IP66 Waterproof and Day/Night Vision. This image demonstrates the camera's weather resistance and its ability to capture clear footage both during the day and at night.

## 5. MAINTENANCE

- **Regular Cleaning:** Periodically clean the camera lenses with a soft, dry cloth to ensure clear image quality.
- **Firmware Updates:** Check the manufacturer's website for any available firmware updates for the NVR and cameras to ensure optimal performance and security.
- **Cable Inspection:** Regularly inspect all power and network cables for any signs of wear or damage.
- **Environmental Considerations:** Ensure cameras are installed in locations that minimize direct exposure to extreme weather conditions, even though they are IP66 rated.

## 6. TROUBLESHOOTING

Problem	Possible Cause	Solution
---------	----------------	----------

Problem	Possible Cause	Solution
No image on monitor/TV	NVR not powered on; monitor not connected or incorrect input selected; NVR not outputting signal.	Check NVR power adapter; ensure VGA/HDMI cable is securely connected and monitor input is correct; restart NVR.
Cameras not connecting to NVR	Camera not powered; camera too far from NVR; signal interference.	Ensure cameras are powered; reduce distance between camera and NVR; minimize obstructions; consider using a repeater if available.
No remote access	NVR not connected to internet; incorrect network settings; app/software issues.	Verify NVR is connected to router via Ethernet; check network settings on NVR; ensure mobile device has internet access; reinstall app if necessary.
Frequent false alarms from motion detection	Sensitivity too high; environmental factors (e.g., moving branches, insects, shadows).	Adjust motion detection sensitivity settings; define specific monitoring areas to exclude irrelevant zones; ensure camera lens is clear of spiderwebs.
Cameras running warm	Normal operation.	It is normal for cameras to generate some heat during operation. Ensure they are not in enclosed spaces that prevent heat dissipation.

## 7. SPECIFICATIONS

Feature	Detail
Brand	SMONET
Model	SMUS-W842MA-XM
Operating System	Proprietary
Hardware Platform	Laptop, PC, Smartphone, Tablet
Wireless Interface	802.11 ac/b/g/n
Video Capture Resolution	1080p
Compatible Devices	Cameras, Laptops, Smartphones, TV, Tablets
Viewing Angle	110 Degrees
Video Input Channels	8 channel
Voltage	12 Volts (DC)
Power Source Type	Corded Electric
Batteries Included	No
Total USB Ports	2
Connector Type	Wired (for NVR connections)
Lens Type	Wide Angle

Feature	Detail
Product Dimensions	33.02 x 24.13 x 16.51 cm; 2.56 kg

## 8. WARRANTY AND SUPPORT

SMONET provides a **1-year warranty** for this Wireless Security Camera System. Additionally, **lifetime free technical support** is available to assist you with any questions or issues you may encounter. For technical assistance, please contact us:

- **US Toll Free:** (866) 678-0666 (Available after 5:30 PM Pacific Time)
- Please refer to the product packaging or official SMONET website for additional contact methods, such as email support.

## 9. OFFICIAL PRODUCT VIDEO

Watch this video for a visual guide on setting up and using your SMONET Wireless Security Camera System.

Your browser does not support the video tag.

Video: SMONET Wireless Security Camera System Overview. This video demonstrates the features and setup process of the security camera system.

