

SKYBASIC GNIMB401KH03

Skybasic Wireless Digital Microscope User Manual

Model: GNIMB401KH03

INTRODUCTION

This manual provides instructions for the Skybasic Wireless Digital Microscope (Model: GNIMB401KH03). This device is designed for magnifying objects with a 50x to 1000x magnification zoom, streaming live footage wirelessly to mobile devices (Android/iOS) and compatible with Windows/Mac computers via USB. It features 8 adjustable LED lights for optimal clarity and supports capturing images and videos.

Please read this manual thoroughly before operating the device to ensure proper use and maintenance.

PACKAGE CONTENTS

Verify that all items are present in the package:

- 1x Skybasic Wireless Digital Microscope
- 1x USB Cable (adapter not included)
- 1x Adjustable Stand (bracket and base)
- 1x User Manual



Image: The Skybasic Wireless Digital Microscope, its adjustable stand, and a smartphone showing a magnified view of an orange.

SETUP

Charging the Device

Before first use, ensure the microscope is fully charged. Connect the provided USB cable to the microscope and a compatible USB power adapter (not included). A full charge provides approximately 3 hours of continuous use.

Scenes to be used

The zoom function is mainly realized by the focusing wheel.

The "+" and "-" button is just an auxiliary function, it can zoom in from 1.0 to 2.0 on the original basis (adding 0.2 units at a time).







Image: Detail of the microscope's power button and LED, illustrating the charging process.

Assembling the Stand

Attach the microscope to the adjustable stand for stable observation. The stand allows for precise positioning and focusing.



Image: The microscope mounted on its adjustable stand.

OPERATING INSTRUCTIONS

Powering On/Off

To turn on the microscope, long press the power button. Long press again to turn it off.

8 Adjustable LED lights

2 million pixels, HD picture quality.

When using on the computer, the Maximum resolution is 720P.



Brightness can be adjusted freely



50-1000x magnification

HD

Image: Step-by-step guide illustrating how to power on the microscope.

Connecting to Devices

A. WiFi Connection (for Android and iOS devices)

1. Download the application "Max-see" from Google Play Store (for Android) or Apple App Store (for iOS).
2. Long press the power button on the microscope to turn it on.
3. On your mobile device, go to WiFi settings and connect to the WiFi network named "Max-see" (no password required).
4. Open the "Max-see" application. The live view from the microscope should appear.

Great Compatibility

Note: "+", "-" and "Take Photo" function keys are not working on USB connection situation. Please click the take photo/ video button in the computer software to operating.

WiFi Connection



USB Connection



Image: Visual guide for connecting the microscope via WiFi to mobile devices and via USB to computers.

8 Adjustable LED lights

2 million pixels, HD picture quality.

When using on the computer, the Maximum resolution is 720P.



Brightness can be adjusted freely



50-1000x magnification

HD

Image: Detailed steps for app download and WiFi connection.

B. USB Connection (for PC or Laptop)

For Windows System Users:

1. Download the application "Smart Camera" from www.inskam.com/download/camera.zip and install it on your PC.
2. Connect the microscope to your computer using the USB cable.
3. Long press the power button to turn on the microscope.
4. Run the "Smart Camera" application.

For MAC System Users:

1. Turn on the microscope and connect it to your Mac via the USB cable.
2. Open the "Photo Booth" software in the Apple App folder.
3. Click on "Camera" and select "GENERAL-UVC#2" (default).

Note: When using USB connection, the "+" and "-" buttons and the "Take Photo" function keys on the microscope are not

active. Please use the corresponding functions within the computer software. The maximum resolution for USB connection is 720P.

Adjusting Magnification and Focus

The primary method for adjusting magnification and focus is by rotating the focusing wheel on the microscope body. The "+" and "-" buttons provide an auxiliary digital zoom function, allowing for a slight increase in magnification from 1.0 to 2.0 on the original basis (adding 0.2 units at a time).

8 Adjustable LED lights

2 million pixels, HD picture quality.

When using on the computer, the Maximum resolution is 720P.



Brightness can be adjusted freely



50-1000x magnification

HD

Image: Illustration of adjusting focus and LED brightness.

Instructions for use

Can be used without cumbersome steps

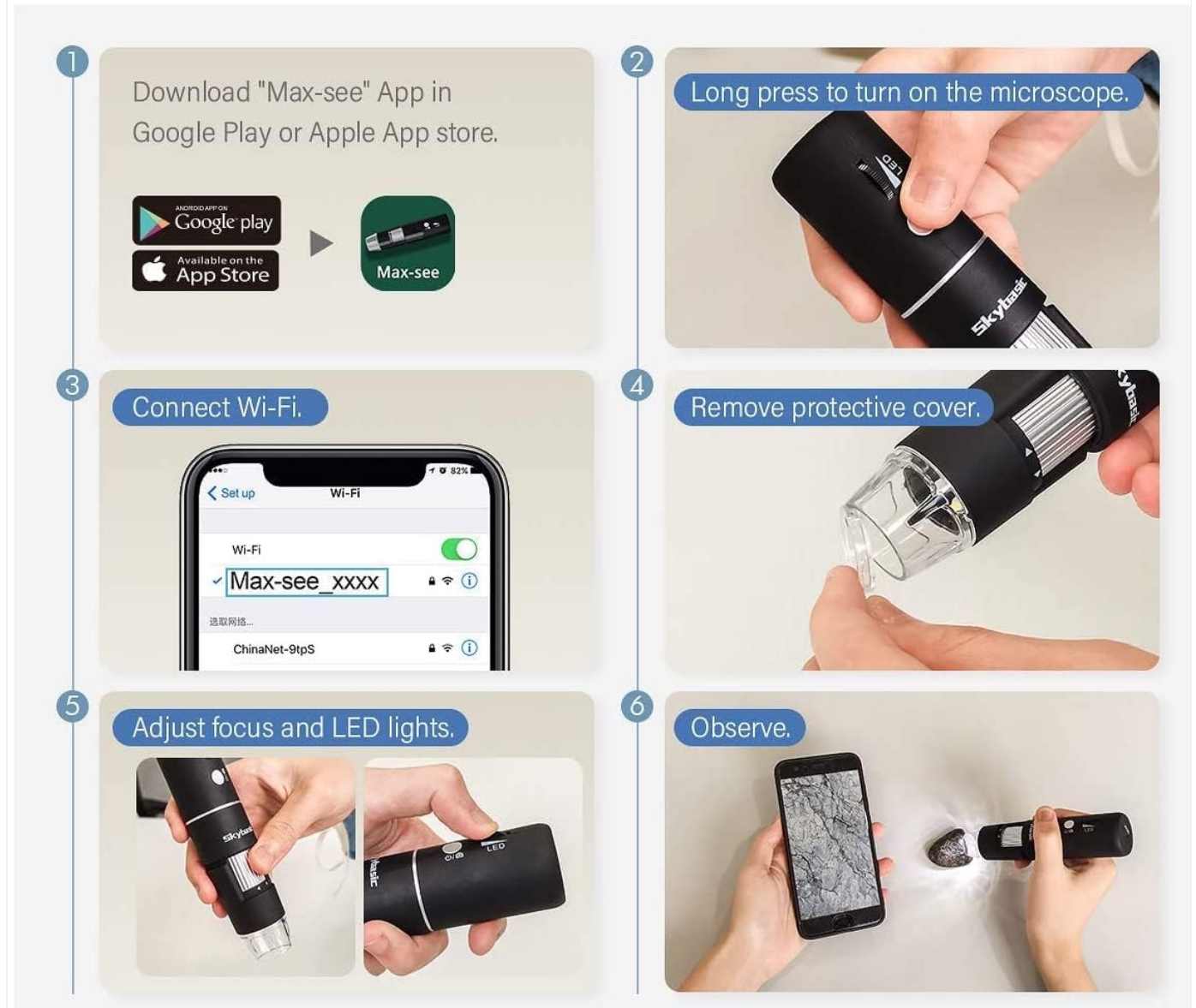


Image: The microscope in use, demonstrating adjustable LED lights and magnification range.

Adjusting LED Illumination

The microscope features 8 adjustable LED lights. Rotate the LED brightness control wheel to increase or decrease the illumination for optimal viewing and image capture.

Instructions for use

Can be used without cumbersome steps

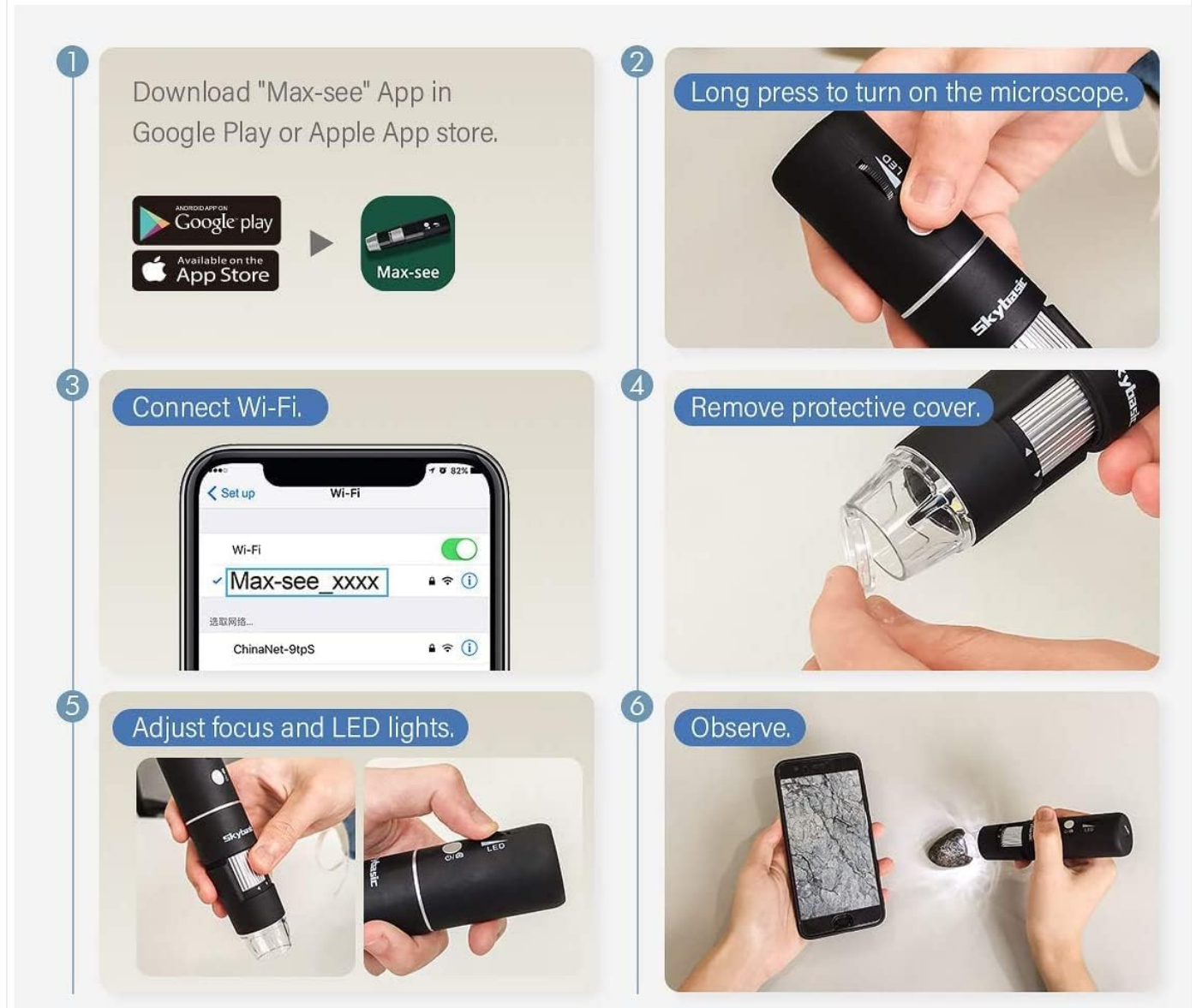


Image: Visual representation of the adjustable LED lights.

Capturing Photos and Videos

When connected via WiFi, you can capture images or videos by tapping the Image/Video button within the "Max-see" application or by pressing the related APP trigger. For USB connection, use the photo/video capture functions within the "Smart Camera" (Windows) or "Photo Booth"/"Quick Time Player" (Mac) software.

Outdoor Use

No need to connect home WiFi and network signals, just turn on your device (cellphone or iPad) WiFi to easily connect and use.



Large Capacity Battery

It can be used continuously for about 3 hours when fully charged.



Image: Examples of common uses for the digital microscope.

MAINTENANCE

- Keep the lens clean. Use a soft, lint-free cloth specifically designed for optical lenses to clean the microscope lens.
- Avoid exposing the device to extreme temperatures, humidity, or direct sunlight.
- Store the microscope in a dry, dust-free environment when not in use.
- Do not attempt to disassemble the microscope, as this will void the warranty and may cause damage.
- Ensure the plastic protective cover is removed from the lens before use.

TROUBLESHOOTING

Problem	Possible Cause	Solution
---------	----------------	----------

Problem	Possible Cause	Solution
No image on screen (WiFi)	Microscope not powered on; Not connected to "Max-see" WiFi; App not open or crashed.	Long press power button to turn on. Check WiFi settings and connect to "Max-see". Restart the "Max-see" app.
No image on screen (USB)	Microscope not powered on; USB cable not connected properly; Incorrect software selected/opened.	Long press power button to turn on. Ensure USB cable is securely connected. For Windows, use "Smart Camera"; for Mac, use "Photo Booth" or "Quick Time Player" and select "GENERAL-UVC#2".
Image is blurry	Focusing wheel not adjusted; Object too far/close; Protective cover not removed.	Rotate the focusing wheel to achieve clear image. Adjust distance to object. Remove the plastic protective cover from the lens.
LED lights not working	LED brightness set to minimum; Device battery low.	Adjust the LED brightness control wheel. Charge the microscope battery.
Cannot take photos/videos via microscope buttons (USB)	Functionality not supported in USB mode.	Use the photo/video capture functions within the computer software (Smart Camera, Photo Booth, Quick Time Player).

SPECIFICATIONS

Feature	Detail
Magnification Range	50X to 1000X
Resolution (WiFi)	1920x1080, 1280x720, 640x480
Resolution (USB)	Max 720P
Light Source	8 Adjustable LED Lights
Sensor	2MP HD CMOS Sensor
Connectivity	WiFi (Android/iOS), USB (Windows/Mac)
Battery Life	Approx. 3 hours continuous use (fully charged)
Material	Plastic
Item Weight	0.31 Kilograms
Model Number	GNIMB401KH03

WARRANTY AND SUPPORT

SKYBASIC offers a worry-free guarantee and 1-year replacement or return service. For technical support, questions about the digital microscope camera, or instructions, please contact SKYBASIC customer service. They are available 24/7 to assist with any issues.

Refer to your purchase documentation or the official SKYBASIC website for specific contact information.

