

[Manuals.plus](#) /

> [Caddytek](#) /

> Caddytek CaddyLite EZ Fold Version 8 Golf Push Cart Instruction Manual

Caddytek CP-EZ-8SIL

Caddytek CaddyLite EZ Fold Version 8 Golf Push Cart

Model: CP-EZ-8SIL

INTRODUCTION

Thank you for choosing the Caddytek CaddyLite EZ Fold Version 8 Golf Push Cart. This manual provides essential information for the safe and efficient use of your new golf cart. Please read these instructions carefully before assembly and operation, and retain them for future reference.

SAFETY INFORMATION

- Always ensure the cart is fully unfolded and locked before attaching your golf bag.
- Engage the brake when the cart is stationary, especially on inclines.
- Do not overload the cart beyond its intended capacity.
- Keep hands and fingers clear of moving parts and folding mechanisms during assembly and folding to prevent pinching.
- Regularly inspect the wheels, frame, and fasteners for any signs of wear or damage. Do not use if damaged.

PACKAGE CONTENTS

Verify that all components are present in the package:

- Golf cart frame with front wheel assembly
- Cooler bag
- 2 main wheels
- Drink holder
- Umbrella holder

ASSEMBLY AND UNFOLDING

The CaddyLite EZ Fold Version 8 is designed for quick setup. Follow these steps to unfold your cart:

1. **Step 1: Extend the Frame.** Gently pull the main handle of the cart upwards until the frame extends and locks into its open position.
2. **Step 2: Rotate the Front Wheel.** Locate the button near the front wheel. Press this button and rotate the front wheel 180 degrees clockwise to center it and lock it into position. Ensure all locking mechanisms are securely engaged.
3. **Step 3: Attach Main Wheels (if not pre-attached).** Align the main wheels with their axles and push them firmly until they click into place.

Ready to go in seconds



Pull the handle upward



Press button, rotate front wheel 180° clockwise to center.



That's it!



Figure 1: The Caddytek CaddyLite EZ Fold Version 8 Golf Push Cart fully unfolded.

Colors to match your style



Blue



Dark Grey



Lime



Silver



Figure 2: Detail of the front wheel rotation mechanism.

OPERATING INSTRUCTIONS

Securing Your Golf Bag

Place your golf bag onto the cart's bag supports. Use the adjustable straps provided to securely fasten your bag to the cart. Ensure the bag is snug to prevent twisting and turning during movement.

Secure the bag



Adjustable straps for added security



Fits all stand bags and cart bags



Prevents unwanted twisting and turning

Figure 3: Securing a golf bag to the cart.

Braking System

The cart features a patented foot brake system. To engage the brake, press down on the brake pedal located near the rear wheel. To release the brake, press the pedal again.

Featured on:

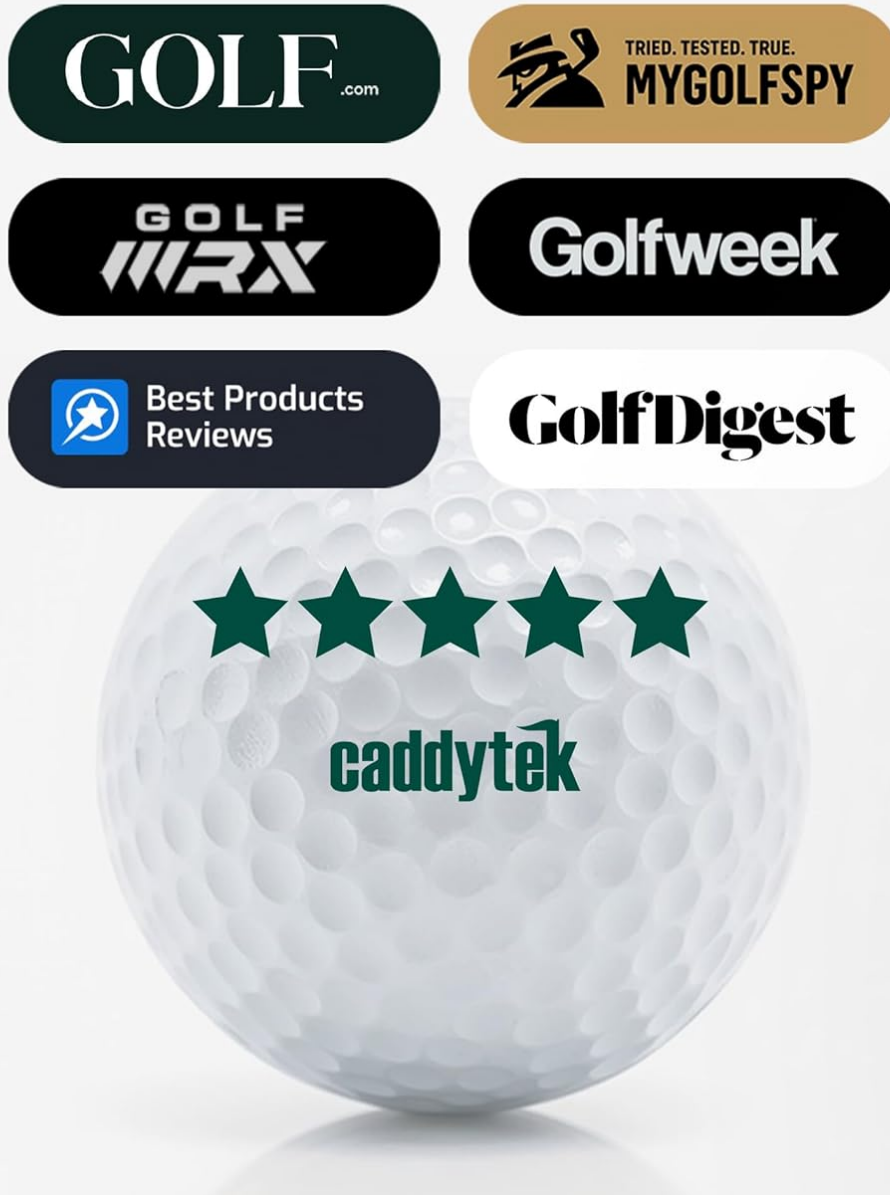


Figure 4: Foot brake system engagement.

Accessory Console

The handle console provides convenient storage and holders for various items:

- **Scorecard Holder:** Keep your scorecard and pencil readily accessible.
- **Storage Compartment:** For small personal items.
- **Phone & GPS Holder:** Securely holds your mobile device or GPS unit.
- **Umbrella Holder:** Attaches to the side for easy access to your umbrella.
- **Beverage Holder:** Keeps your drink within reach.
- **Storage Net:** Additional storage for larger items.
- **Tee Holders:** Conveniently store golf tees.

Keep everything within reach



Figure 5: Overview of the accessory console.

Cooler Bag

The integrated cooler bag provides a convenient space to keep beverages or snacks cool during your round.

Smooth and sturdy ride

Extended Dimensions

32" x 47" x 36 - 45"
(height adjustable)



Front-wheel alignment system

for better control and maneuverability

Advanced EVA wheels

ensure smooth rolling across various terrains

One-Click Folding

One lift, one press — folds in seconds

Figure 6: Integrated cooler bag.

MAINTENANCE

- **Cleaning:** Wipe down the frame and wheels with a damp cloth after each use to remove dirt and debris. Avoid harsh chemicals.
- **Wheel Care:** Periodically check the wheels for any obstructions or damage. The EVA wheels are maintenance-free.
- **Storage:** Store the cart in a dry, cool place away from direct sunlight when not in use.

FOLDING AND STORAGE

The CaddyLite EZ Fold Version 8 features a compact folding design for easy transport and storage.

1. **Step 1: Release Front Wheel.** Press the button and rotate the front wheel 180 degrees to its folded position.
2. **Step 2: Fold the Frame.** Press the patented one-click button and gently push the handle downwards to collapse the cart frame. Ensure all parts are aligned for a compact fold.

When folded, the cart dimensions are approximately 14.4 inches (L) x 16.3 inches (W) x 28.2 inches (H).

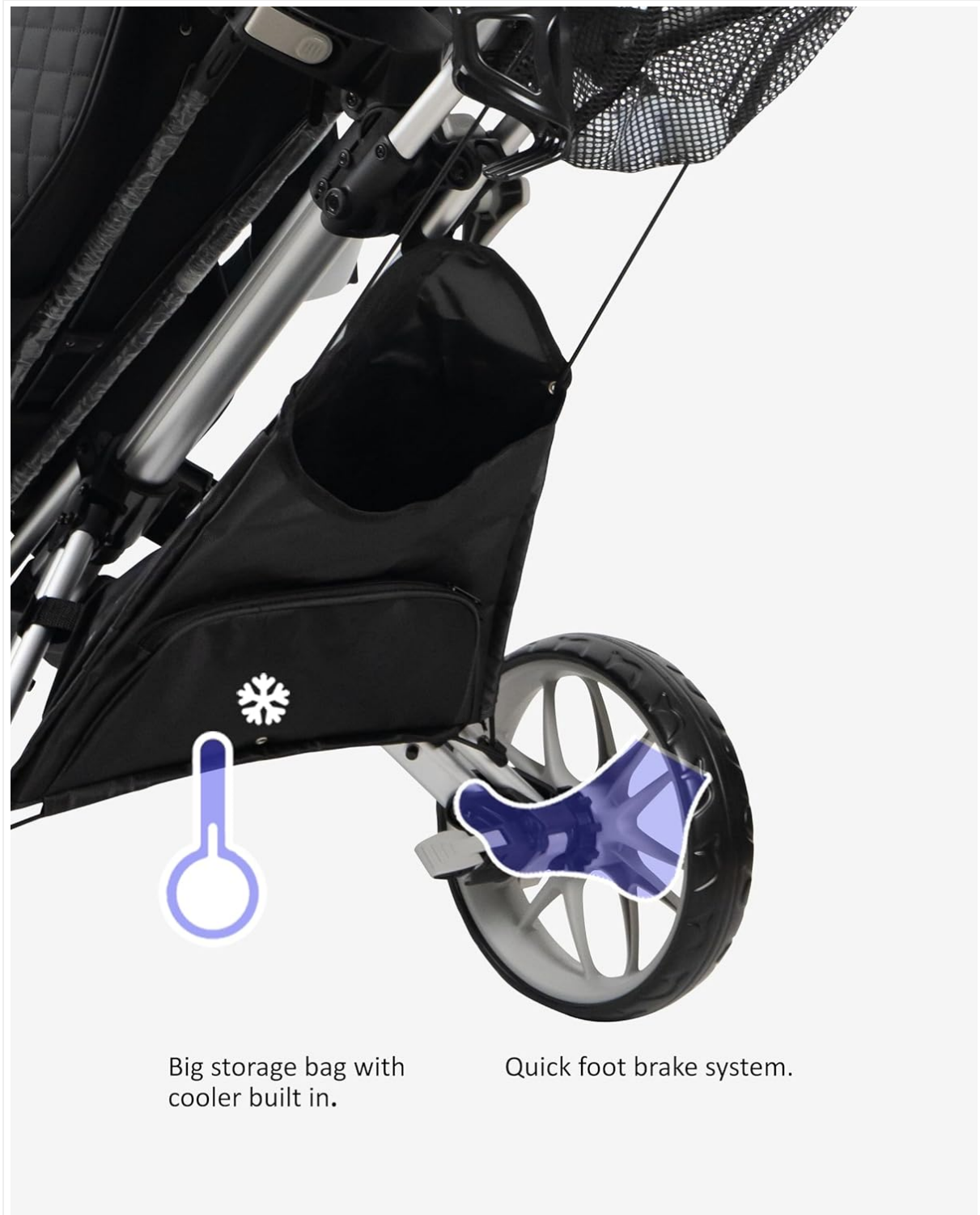


Figure 7: Folded dimensions and compact storage.

TROUBLESHOOTING

- **Cart does not fold/unfold smoothly:** Check for any obstructions in the folding mechanism. Ensure

the one-click button is fully pressed.

- **Wheels are not rolling freely:** Inspect wheels for debris (grass, mud) and remove. Ensure wheels are securely attached.
- **Brake not engaging/disengaging:** Check the brake pedal for obstructions. Ensure the mechanism is clean and free of dirt.

SPECIFICATIONS

Model Number	CP-EZ-8SIL
Dimensions (Extended)	138.94 x 78.74 x 113.03 cm (54.7 x 31 x 44.5 inches)
Dimensions (Folded)	14.4 x 16.3 x 28.2 inches
Weight	8.39 kg (18.5 lbs)
Frame Material	Aluminum
Wheel Type	Three 11.5 x 2.6 inch maintenance-free EVA wheels
Color	Silver
Included Components	Golf cart frame with front wheel assembly and cooler bag, 2 main wheels, drink holder, umbrella holder

WARRANTY AND SUPPORT

The Caddytek CaddyLite EZ Fold Version 8 Golf Push Cart comes with **one-year manufacturer's warranty** from the date of purchase, covering defects in materials and workmanship.

For warranty claims, technical support, or replacement parts, please contact Caddytek customer service.

Contact details can typically be found on the manufacturer's website or your purchase receipt.

Please note: This warranty does not cover damage caused by misuse, accidents, unauthorized modifications, or normal wear and tear.