

Hitachi BW-V70C

Hitachi BW-V70C Fully Automatic Washing Machine User Manual

Model: BW-V70C | Capacity: 7kg

1. INTRODUCTION

Thank you for purchasing the Hitachi BW-V70C Fully Automatic Washing Machine. This manual provides essential information for the safe and efficient operation, installation, and maintenance of your appliance. Please read this manual thoroughly before use and keep it for future reference.

Safety Precautions

- Always ensure the power plug is securely inserted into a grounded outlet.
- Do not operate the machine with wet hands.
- Keep children away from the appliance during operation.
- Do not wash items that are waterproof or easily flammable.
- Refer to the installation section for proper setup to prevent water leakage or electrical hazards.

2. PRODUCT OVERVIEW

The Hitachi BW-V70C is a top-loading fully automatic washing machine designed for efficient and thorough cleaning. It features a 7kg washing capacity and a compact body width of 53cm, making it suitable for various living spaces.



Figure 2.1: Hitachi BW-V70C Fully Automatic Washing Machine. This image displays the overall design of the washing machine, highlighting its top-loading access and control panel.

Key Components

- **Control Panel:** Located at the front for easy access and operation.
- **Washing Tub:** Stainless steel tub for durability and hygiene.
- **Lid:** Top-opening lid for loading and unloading laundry.
- **Lint Filter:** Slide-type filter for easy cleaning.
- **Water Inlet:** Connection point for the water supply hose.
- **Drain Hose:** For water discharge.

商品寸法+10cm以上の幅が必要です。

《搬入における確認項目》

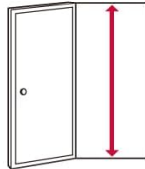
※段差やコーナー箇所があり、直線ではない場合、+10cm以上の幅が必要となります。
※手すり・照明・装飾物などがある場合、そこから+10cmの幅が必要となります。

《商品の寸法》



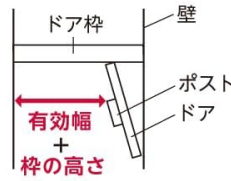
《玄関の高さ》

商品寸法+10cm



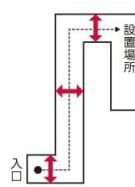
《玄関の幅》

商品寸法+10cm



《廊下の幅》

商品寸法+10cm



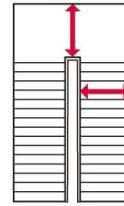
《エレベータの幅》

商品寸法+10cm



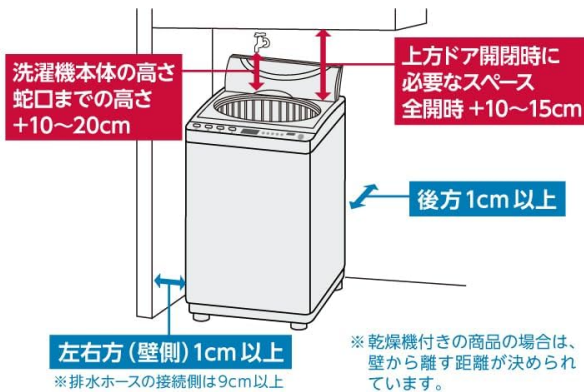
《階段の幅》

商品寸法+10cm

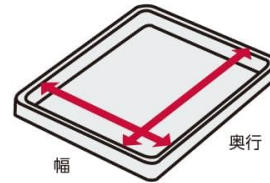


《設置における確認項目》

・必要なスペースは商品によって異なるため、詳細はメーカーページなどでご確認ください。
・洗濯機の設置時にはドアを開閉するため上部のスペース確保が必要となります。



防水パンの有無と内側サイズをチェック



※排水エルボ・足台の有無と排水口位置によって、
追加費用がかかることがあります。

Figure 2.2: Hitachi BW-V70C Control Panel. This image shows the detailed layout of the control panel with various buttons and indicators for cycle selection and settings.

The control panel features intuitive buttons for selecting wash cycles, adjusting settings, and starting/pausing operations. Refer to the labels on the panel for specific functions.

3. INSTALLATION AND INITIAL SETUP

Proper installation is crucial for the performance and longevity of your washing machine. Ensure the appliance is placed on a stable, level surface.

Dimensions and Space Requirements

The washing machine has the following dimensions:

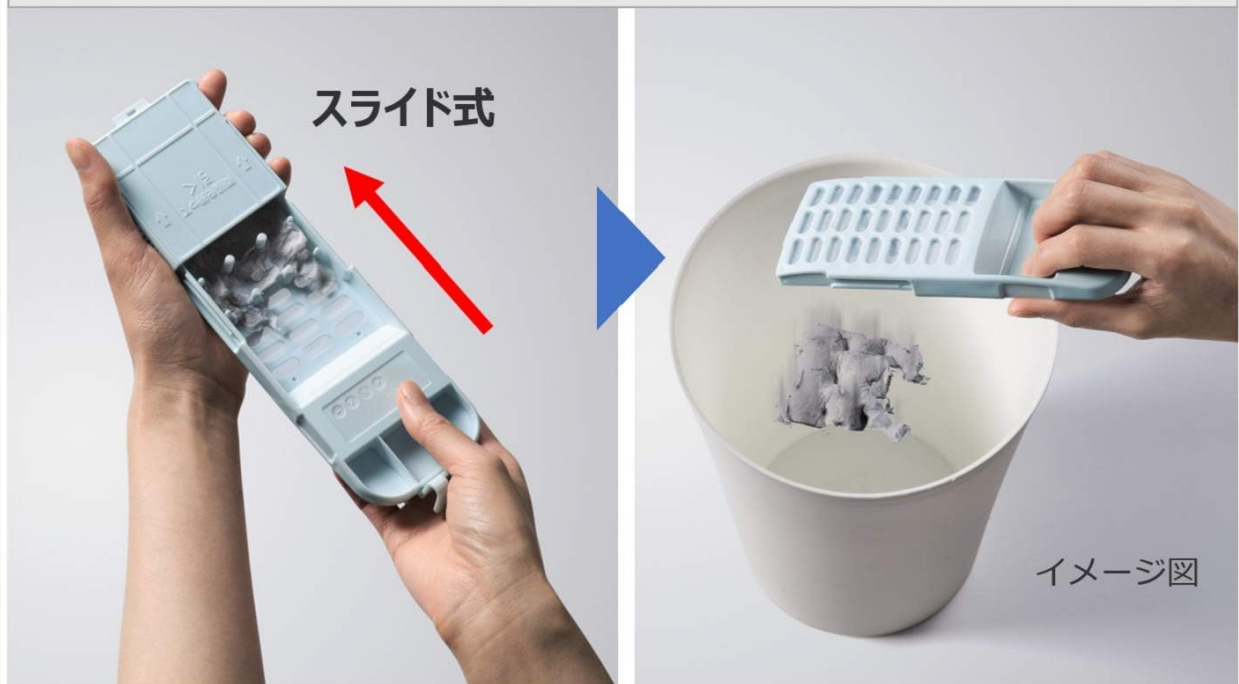
- **Outer Dimensions (W x D x H):** 577mm x 586mm x 980mm (including handle, drain hose, and water supply hose attachment parts)
- **Body Width (excluding handle and drain hose):** 530mm

- **Weight:** Approximately 35kg

It is designed to fit into a waterproof pan with an inner depth of 530mm or more. Ensure sufficient space around the machine for ventilation and maintenance.

ごみに触れずにサッと捨てられます。

スライド式糸くずフィルター



※糸くずの付き具合などにより効果は異なります。

Figure 3.1: Installation Dimensions Diagram. This diagram illustrates the precise measurements of the washing machine and the required clearances for proper installation, including space for the waterproof pan and hose connections.

Hose Connections

- **Water Supply Hose:** Approximately 80cm in length. Connect to a cold water tap.
- **Bath Water Hose:** Approximately 4m in length with an inner diameter of 15mm. (Optional, for using bath water).
- **Drain Hose:** Outlet approximately 109cm (left) / 82cm (right). Ensure the drain hose is properly secured to prevent kinks or disconnections.

4. OPERATING INSTRUCTIONS

This section details the various washing cycles and features of your Hitachi BW-V70C washing machine.

Niagara Beat Wash

The Niagara Beat Wash system effectively removes tough stains like food oil, mud, and dirt from collars and sleeves. It utilizes a unique