

## Crayola 68-8020

# Crayola 120-Count Colored Pencils User Manual

Model: 68-8020

## 1. PRODUCT OVERVIEW

The Crayola 120-Count Colored Pencils set provides a vast array of vibrant colors for artistic expression. Designed for both children and adults, these pencils are suitable for various creative projects, including coloring books, school assignments, and detailed artwork. The set emphasizes ease of use, durability, and a broad spectrum of hues to inspire creativity.



Figure 1.1: The Crayola 120-Count Colored Pencils set, showcasing the vibrant assortment of colors and packaging.

## 2. KEY FEATURES

---

- **120 Vibrant Colors:** A comprehensive collection of 120 unique colored pencils, offering an extensive palette for diverse artistic needs.
- **Smooth Application:** Pencils feature a smooth, creamy texture that allows for effortless blending and layering of colors.
- **Pre-Sharpened Tips:** Each pencil comes pre-sharpened, enabling immediate use upon opening the box.
- **Durable Construction:** Crafted with premium materials, the pencil cores are designed for durability and resistance to breakage during use and sharpening.
- **Versatile Use:** Ideal for a wide range of applications, including coloring books, school projects, art crafts, and detailed drawings.
- **Non-Toxic:** Safe for use by children and adults.



Figure 2.1: A close-up view of the pencils, demonstrating the wide range of colors available in the 120-count set.



## 3. SETUP AND GETTING STARTED

---

### 3.1 Unboxing

1. Carefully open the product packaging.
2. Remove the trays containing the colored pencils.
3. The pencils are pre-sharpened and ready for immediate use.

### 3.2 Initial Inspection

Before first use, inspect all pencils for any visible damage. While Crayola pencils are designed for durability, occasional transit impacts can occur. Ensure all 120 colors are present and tips are intact.



Figure 3.1: The front of the Crayola 120-Count Colored Pencils box, indicating the quantity and brand.

## 4. OPERATING AND USAGE INSTRUCTIONS

---

### 4.1 Basic Coloring

Hold the pencil comfortably and apply light, even pressure for smooth color application. For darker shades, apply more pressure or layer colors.

### 4.2 Blending and Layering

These pencils are designed for effective blending and layering. Apply multiple light layers of different colors to achieve

desired shades and gradients. The smooth texture facilitates seamless transitions.

### 4.3 Recommended Surfaces

Crayola colored pencils perform well on various paper types, including standard drawing paper, construction paper, and coloring book pages. For best results with blending and layering, consider using paper with a slight tooth.



Figure 4.1: A child actively using a Crayola colored pencil, demonstrating the product in use for creative activities.

## 5. MAINTENANCE AND CARE

---

### 5.1 Sharpening

Use a standard pencil sharpener to maintain a sharp point. Due to the durable lead, the pencils sharpen cleanly without excessive breakage, even after being dropped.

### 5.2 Storage

Store pencils in their original box or a pencil case to protect them from damage and keep them organized. Avoid exposing pencils to extreme temperatures or direct sunlight, which can affect lead integrity.

### 5.3 Cleaning

If pencils become dirty, gently wipe the wooden barrel with a dry cloth. Avoid using water or harsh chemicals.

## 6. TROUBLESHOOTING

---

### 6.1 Lead Breakage During Sharpening

While Crayola pencils are designed with strong leads, excessive pressure during sharpening or using a dull sharpener can cause breakage. Ensure your sharpener is clean and sharp. If the lead consistently breaks after being dropped, the internal lead might be fractured, but this is rare with Crayola's quality.

### 6.2 Faint Color Application

If colors appear faint, try applying more pressure or layering multiple strokes. Ensure the paper surface is suitable for colored pencils; very smooth or glossy surfaces may not allow for optimal pigment transfer.

## 7. SPECIFICATIONS

---

Attribute	Detail
Brand	Crayola
Model Number	68-8020
Item Weight	1.64 pounds
Product Dimensions	1.44 x 8.98 x 7.19 inches
Color	Multicolor (120 unique colors)
Material Type	Wood
Pencil Lead Degree (Hardness)	HB
Number of Items	1 (Pack of 120 pencils)
Age Range (Description)	Kid





Figure 7.1: A visual representation of the 120 distinct colors included in the set.

## 8. WARRANTY AND SUPPORT

---

Specific warranty information for this product is not provided in this manual. For details regarding warranty, returns, or customer support, please refer to the retailer's policy or contact Crayola directly through their official website or customer service channels.

Crayola is committed to providing quality art supplies. For further assistance or inquiries, please visit the official Crayola website or contact their customer support team.

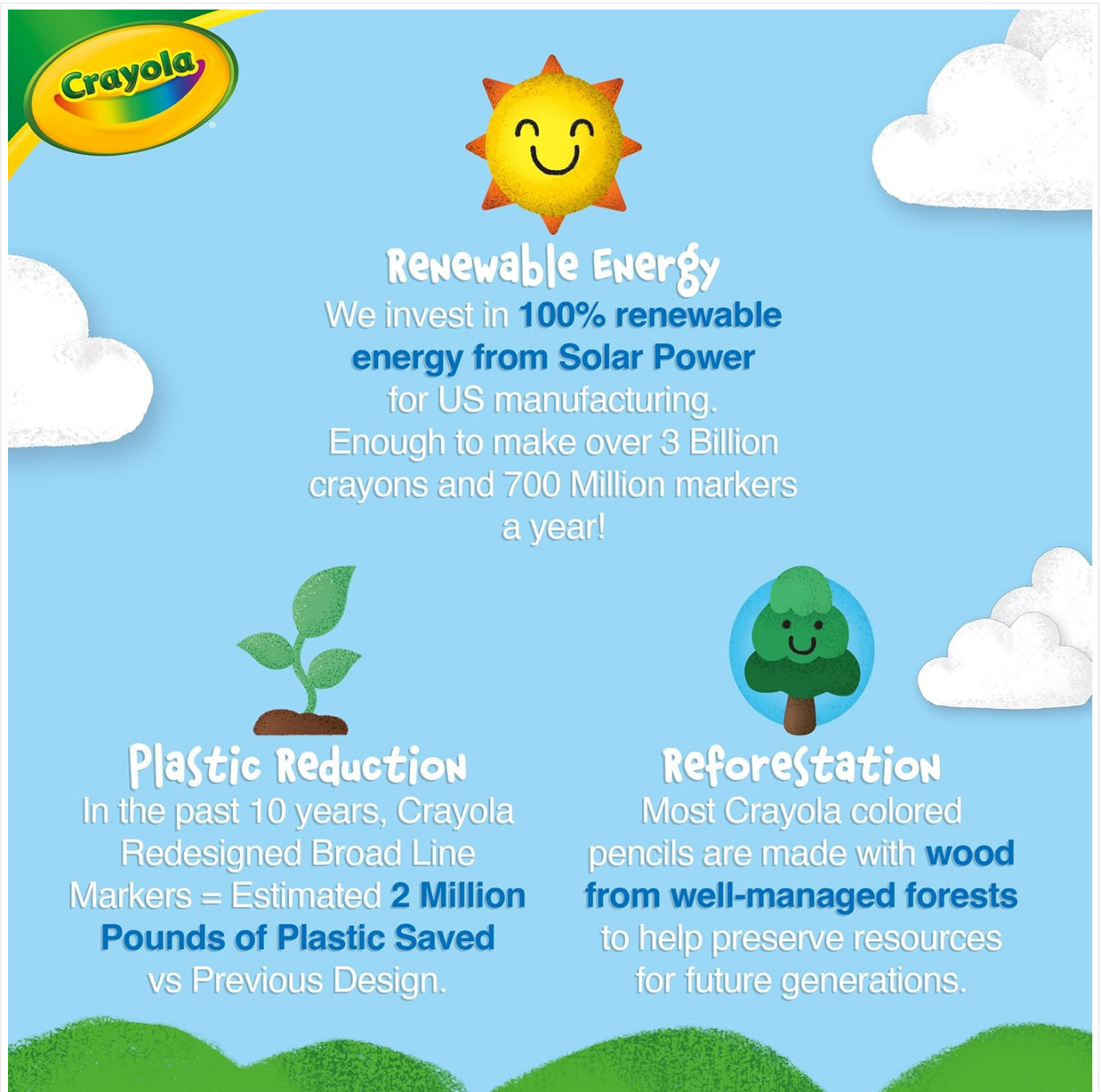


Figure 8.1: Crayola's environmental initiatives, including renewable energy, plastic reduction, and reforestation efforts.

EHSDE User Fiche COSHH Crayons pour aquarelle 1062369826 content etilize Sheet |||

lang:i-klngon score:14 filesize: 344.34 K page\_count: 8 document date: 2019-07-09