



[Manuals.plus](#) /

> [Orbit](#) /

> Orbit B-hyve 8-Zone Smart Indoor Irrigation Controller User Manual

Orbit B-hyve 8-Zone

Orbit B-hyve 8-Zone Smart Indoor Irrigation Controller User Manual

Model: B-hyve 8-Zone

INTRODUCTION

The Orbit B-hyve 8-Zone Smart Indoor Irrigation Controller provides an efficient solution for managing your indoor irrigation system. This controller allows for remote scheduling and monitoring of watering programs, ensuring optimal plant health and water conservation. It integrates Wi-Fi and Bluetooth connectivity for flexible control.

This manual provides detailed instructions for the installation, operation, and maintenance of your B-hyve 8-Zone controller.

WHAT'S IN THE BOX

Verify that all components are present before beginning installation.

- Orbit B-hyve 8-Zone Smart Indoor Irrigation Controller
- Mounting Hardware (screws and anchors)
- Power Adapter
- Quick Start Guide



Image: The Orbit B-hyve 8-Zone Smart Indoor Irrigation Controller with its power cord and a view of the display showing '8'. This image illustrates the main unit and its primary function.

SETUP

1. Mounting the Controller

The B-hyve controller is designed for indoor installation. Choose a suitable location near a standard 120V AC outlet and within Wi-Fi signal range. Use the provided mounting hardware to secure the controller to a wall.

Designed for Indoor Installation

Compact, durable housing built for secure indoor mounting



Indoor Mount Ready



WiFi & Bluetooth Enabled



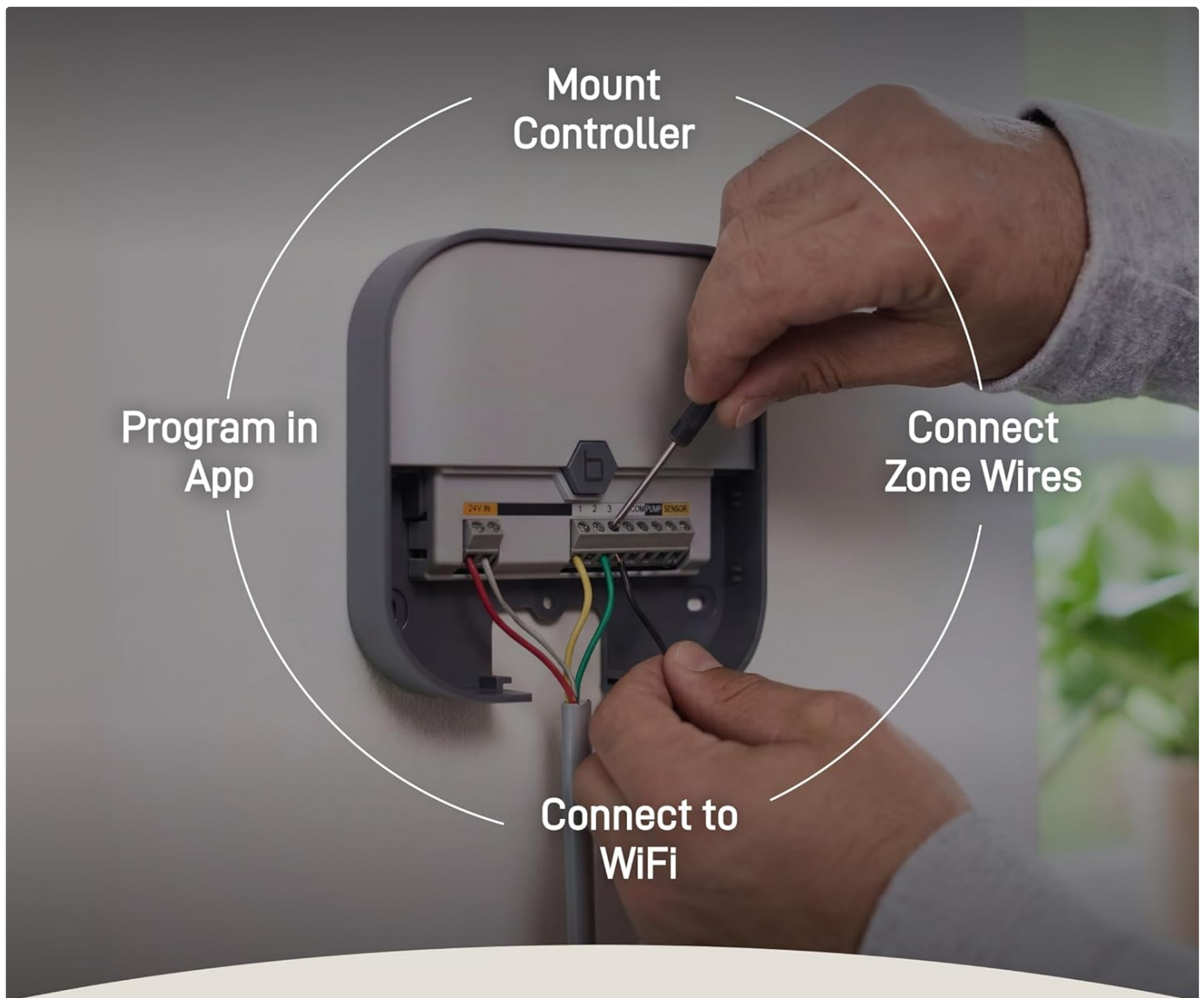
Reliable Season-Long Operation



Image: The Orbit B-hyve controller mounted on an indoor wall, demonstrating its compact design and readiness for indoor installation. It highlights the Wi-Fi and Bluetooth capabilities and reliable operation.

2. Wiring the Zones

Connect your irrigation system's zone wires to the corresponding terminals on the B-hyve controller. Ensure each wire is securely fastened. The controller supports up to 8 zones. If you have a master valve or pump start relay, connect it to the designated terminal.



Simple Setup & Programming

Image: A close-up view of hands connecting zone wires to the terminals inside the Orbit B-hyve controller. This illustrates the process of connecting zone wires, connecting to Wi-Fi, and programming via the app.

3. Powering On and App Installation

Plug the power adapter into the controller and then into a wall outlet. Download the Orbit B-hyve app from your device's app store (available for iOS and Android). Follow the in-app instructions to create an account and connect your controller to your home's 2.4GHz Wi-Fi network.



Save Time with Reliable App Control

Never forget to water by
setting schedules and adjust
anytime from the app

Works with iOS
and Android

Image: A hand holding a smartphone displaying the Orbit B-hyve app's calendar interface, showing weather information and scheduled watering days. This demonstrates the app-based control and scheduling capabilities.

OPERATING THE CONTROLLER

1. Creating Watering Schedules

Use the B-hyve app to set up customized watering schedules for each zone. You can define start times, run durations, and watering days. The app allows for independent scheduling of up to 8 irrigation zones.



Control 8 Zones Independently

Customize watering schedules for up to 8 irrigation zones

Image: The Orbit B-hyve controller positioned above a lush garden with multiple irrigation zones. This illustrates the ability to control up to 8 zones independently and customize watering schedules.

2. Smart Watering with WeatherSense

Enable the WeatherSense feature in the app for automatic watering adjustments based on real-time local weather conditions. This helps conserve water by preventing watering during rain, high winds, or freezing temperatures.

Powered by WeatherSense®

Automatically adjusts
watering based on
real-time local weather



Tracks Local
Weather



Adjusts Watering
for You



Helps Reduce
Water Waste



Image: The Orbit B-hyve controller shown with icons representing WeatherSense features: tracking local weather, adjusting watering automatically, and reducing water waste. A background image shows rain, indicating weather responsiveness.

3. Manual Watering

You can initiate manual watering for individual zones or all zones directly from the controller or through the B-hyve app. This is useful for spot watering or testing your system.

Custom Watering for Lawns, Gardens, Beds & Outdoor Spaces



Easily manage underground sprinkler systems with smart control from one app

Image: A smartphone displaying the Orbit B-hyve app interface with manual watering controls for a specific zone. This demonstrates how to manage underground sprinkler systems with smart control from the app.

MAINTENANCE

The Orbit B-hyve controller requires minimal maintenance. Keep the unit clean and free from dust. Ensure the power adapter and wiring connections remain secure. For optimal performance, periodically check for app updates and install them.

- **Cleaning:** Wipe the exterior of the controller with a soft, damp cloth. Do not use abrasive cleaners or immerse the unit in water.
- **Connection Check:** Periodically inspect all wire connections to ensure they are tight and free from corrosion.
- **Software Updates:** Ensure your B-hyve app and controller firmware are up to date for the latest features and security enhancements.

TROUBLESHOOTING

If you encounter issues with your Orbit B-hyve controller, refer to the following common solutions:

Problem	Possible Cause / Solution
Controller not powering on.	Check if the power adapter is securely plugged into both the controller and a working electrical outlet. Verify the outlet has power.
Cannot connect to Wi-Fi.	Ensure your Wi-Fi network is 2.4GHz. Check your Wi-Fi password. Move the controller closer to your router. Restart your router and the controller.
Zones not watering.	Verify that the zone wires are correctly connected. Check for any rain delays or smart watering holds in the app. Ensure your water supply is on.
App not responding.	Close and reopen the B-hyve app. Ensure your smartphone has an active internet connection. Check for app updates.

For further assistance, consult the Orbit B-hyve app's help section or the manufacturer's online support resources.

SPECIFICATIONS

Feature	Detail
Model	B-hyve 8-Zone Smart Indoor Irrigation Controller
Brand	Orbit
Zones	8
Connectivity	Wi-Fi (2.4GHz only), Bluetooth
Input Voltage	120 Volts AC
Material	Plastic
Dimensions (L x W x H)	17.8 cm x 8.9 cm x 22.2 cm (7.0 in x 3.5 in x 8.7 in)
Weight	Approximately 0.9 kg (2 pounds)
Display Type	LCD
UPC	046878579255
ASIN	B07DJ628XH

WARRANTY INFORMATION

Orbit products are manufactured to high quality standards. For specific warranty details, including coverage period and terms, please refer to the official Orbit website or the warranty card included with your product. Keep your purchase receipt as proof of purchase for any warranty claims.

SUPPORT

If you require technical assistance, have questions about your product, or need to report an issue, please contact Orbit customer support. Support contact information, including phone numbers and online resources, can typically be found on the official Orbit website or within the B-hyve app's help section.

Online Resources: Visit www.orbitonline.com for FAQs, troubleshooting guides, and product registration.

