

[Manuals.plus](#) /

› [TOPOINT](#) /

› TOPOINT Bluetooth Sleep Mask with Headphones (Model GH01) User Manual

TOPOINT GH01

TOPOINT Bluetooth Sleep Mask with Headphones (Model GH01) User Manual

Model: GH01



1. INTRODUCTION

This manual provides comprehensive instructions for the safe and effective use of your TOPOINT Bluetooth Sleep Mask with Headphones. This device combines a comfortable sleep mask with integrated Bluetooth headphones, designed to enhance your sleep experience by blocking light and providing audio playback.



Image: The TOPOINT Bluetooth Sleep Mask, highlighting its features and included accessories.

2. PACKAGE CONTENTS

Please verify that all items are present in your package:

- TOPOINT Bluetooth Sleep Mask
- USB Charging Cable
- User Manual
- Carry Pouch
- Earplugs (optional accessory)

3. PRODUCT OVERVIEW

The TOPOINT Bluetooth Sleep Mask is engineered for comfort and functionality, featuring:

- **99.99% Light Blockout:** Designed with a bending cartilage structure and extra cushioning to thoroughly block light, including from the nose area.
- **95% 5A Cotton Material:** Provides a soft and warm feel, suitable for various users.
- **Adjustable Headband:** Ensures a secure and comfortable fit for different head sizes.
- **Integrated Bluetooth 5.4 Headphones:** Offers high-quality stereo music playback and hands-free calling with a built-in microphone.
- **Adjustable Speaker Position:** Speakers can be moved within the mask to align with your ears for optimal audio.

- **Control Panel:** Easily accessible buttons for power, volume, and track control.

5 LAYERS OF BLACKOUT MATERIAL



100% Complete
Light Blockout

Image: Cross-section view illustrating the five layers of blackout material in the sleep mask.

0 Pressure

No Pressure on Ears
Side-sleeper Friendly



Image: The sleep mask designed for comfort, particularly for side sleepers, with no pressure on the ears.

10mm Dynamic Bass Drivers

Feel the Music

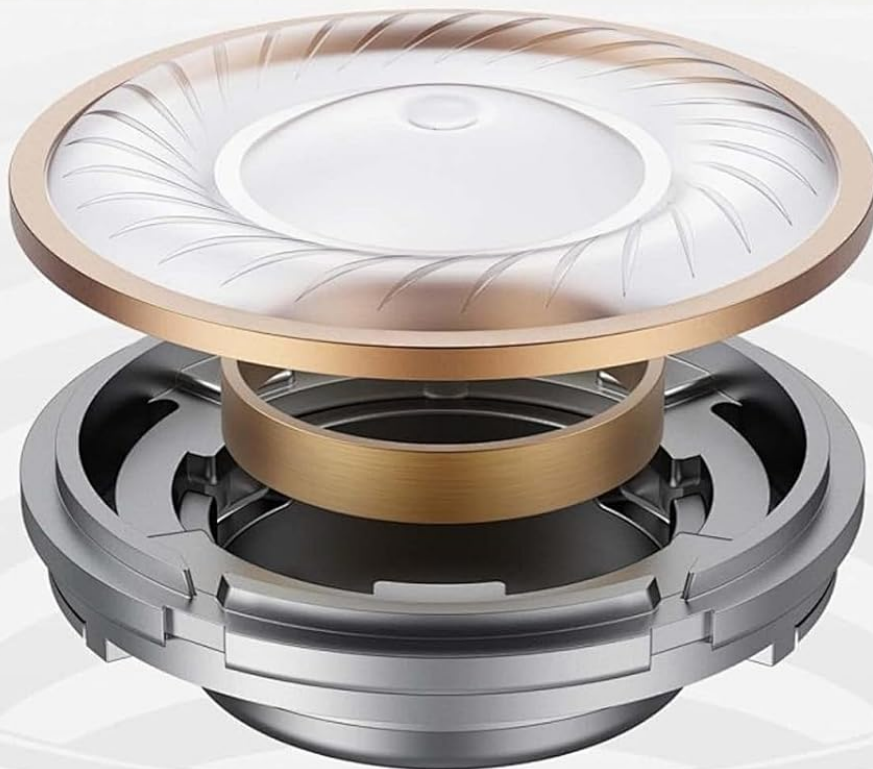


Image: Detailed view of the 10mm dynamic bass drivers for enhanced audio quality.

4. SETUP

4.1 Charging the Device

Before initial use, fully charge the sleep mask. The device is not fully charged upon shipment for safety reasons.

1. Locate the charging port on the control panel of the sleep mask.
2. Connect the provided USB charging cable to the mask and to a standard USB power source (e.g., computer, wall adapter).
3. A red indicator light will illuminate during charging. The light will turn off or change color when charging is

complete.

4. A full charge typically takes approximately 2 hours and provides up to 15 hours of playback time.



Image: The sleep mask being charged, illustrating its long battery life.

4.2 Powering On/Off

- **To Power On:** Press and hold the power button (usually the central button on the control panel) for a few seconds until an indicator light flashes or an audible prompt is heard.
- **To Power Off:** Press and hold the power button again for a few seconds until the indicator light turns off or an audible prompt confirms shutdown.

4.3 Bluetooth Pairing

Pair the sleep mask with your Bluetooth-enabled device (smartphone, tablet, computer) to play audio.

1. Ensure the sleep mask is powered on and in pairing mode (indicator light will typically flash blue rapidly).
2. On your audio device, navigate to the Bluetooth settings.
3. Search for available devices and select 'V03' from the list.
4. Once connected, the indicator light on the mask will usually flash blue slowly or remain solid, and an audible confirmation may be heard.



Image: Demonstrating the Bluetooth 5.4 connection process with a smartphone.

5. OPERATING INSTRUCTIONS

5.1 Music Playback

- **Play/Pause:** Press the power button once.
- **Volume Up:** Press the '+' button.
- **Volume Down:** Press the '-' button.
- **Next Track:** Press and hold the '+' button.
- **Previous Track:** Press and hold the '-' button.

5.2 Call Functions

The built-in microphone allows for hands-free calls when connected to your smartphone.

- **Answer/End Call:** Press the power button once during an incoming call.
- **Reject Call:** Press and hold the power button for approximately 2 seconds during an incoming call.
- **Redial Last Number:** Double-press the power button.

5.3 Adjusting Speaker Position

For optimal sound and comfort, you can adjust the position of the internal speakers.

1. Gently slide the speakers within the fabric pockets of the mask until they align with your ears.
2. Ensure the speakers are flat and do not cause discomfort.

6. MAINTENANCE

6.1 Cleaning the Sleep Mask

To clean the sleep mask, the electronic module must be removed.

1. Locate the opening in the fabric liner, typically near the control panel.
2. Carefully remove the Bluetooth module and speakers from the mask.
3. Hand wash the fabric mask with mild soap and cool water. Do not machine wash or tumble dry.
4. Allow the mask to air dry completely before reinserting the electronic components.
5. Reinsert the Bluetooth module and speakers, ensuring they are correctly positioned.

6.2 Storage

Store the sleep mask in a cool, dry place away from direct sunlight and extreme temperatures. Use the provided carry pouch for protection during travel or storage.

7. TROUBLESHOOTING

Issue	Possible Cause	Solution
Device does not power on	Low battery	Charge the device fully.
Cannot pair via Bluetooth	Device not in pairing mode; Bluetooth off on source device; too far from source device	Ensure mask is on and flashing blue; enable Bluetooth on your device; move closer to the mask (within 10 meters).

Issue	Possible Cause	Solution
No sound or poor sound quality	Speakers misaligned; volume too low; device not connected	Adjust speaker position; increase volume on both mask and source device; re-pair Bluetooth.
Charging issues	Faulty cable or power source	Try a different USB cable or power adapter.

If you encounter any issues with charging, Bluetooth connectivity, or the speakers that are not resolved by the above steps, please contact our customer service team for assistance.

8. SPECIFICATIONS

- **Model Number:** GH01
- **Product Dimensions:** 6.2 x 4.7 x 1.5 inches
- **Item Weight:** 5.29 ounces
- **Material:** 95% 5A Cotton
- **Bluetooth Version:** 5.4
- **Battery:** 1 A battery required (integrated rechargeable)
- **Battery Life:** Up to 15 hours (approx.)
- **Charging Time:** Approximately 2 hours

9. SAFETY INFORMATION

Please read and adhere to the following safety guidelines:

- Always adjust the mask to fit properly over your eyes to avoid discomfort or obstruction.
- Follow the care instructions for washing the product to prevent damage to electronic components.
- Do not use the mask if you have difficulty breathing or removing it by yourself.
- Keep the device away from water and excessive moisture.
- Do not attempt to disassemble or repair the device yourself. Contact customer service for assistance.

10. WARRANTY AND SUPPORT

TOPOINT is committed to providing quality products. While specific warranty details are not provided in this manual, if you encounter any issues or require support, please contact the TOPOINT customer service team. Refer to your purchase documentation or the TOPOINT website for contact information.

