

Orbit 26812

Orbit Pro Series 8-Pattern Thumb Control Hose Nozzle Sprayer User Manual

Model: 26812

Brand: Orbit

INTRODUCTION

The Orbit Pro Series 8-Pattern Thumb Control Hose Nozzle Sprayer is designed to provide versatile and efficient watering for various outdoor tasks. Its innovative thumb-control feature allows for effortless water flow adjustment, making it suitable for residential homeowners, professional contractors, and growers. This manual provides essential information for the proper setup, operation, and maintenance of your new hose nozzle.

PRODUCT OVERVIEW

Key Features

- **ENHANCE YOUR GARDENING EXPERIENCE** - Our premium garden hose nozzle sprayer offers versatile spraying options for all your watering needs.
- **ADJUSTABLE SPRAY PATTERNS** - Easily switch between 7 different water patterns with our innovative rotating nozzle dial feature.
- **DURABLE AND LONG-LASTING** - Built with high-quality materials, our nozzle for hose ensures long-lasting performance in any watering system.
- **EASY TO USE AND CLEAN** - The user-friendly design of our water hose sprayer makes it simple to operate and easy to clean after use.
- **VERSATILE SPRAY PATTERNS** - From gentle showers to powerful jets, our spray hose nozzle provides a wide range of spray patterns for various tasks.

Product Components



Figure 1: Orbit Pro Series 8-Pattern Thumb Control Hose Nozzle Sprayer. This image shows the overall design of the nozzle, highlighting its ergonomic handle and adjustable spray head.

DURABLE CONSTRUCTION



**Heavy-Duty,
Non-Corrosive
Zinc Core**

**Robust, Rubberized
Components Reduce
Damage If Dropped**

Figure 2: Durable Construction. The nozzle features a heavy-duty, non-corrosive zinc core and robust, rubberized components designed to reduce damage from drops.

8-Spray Patterns

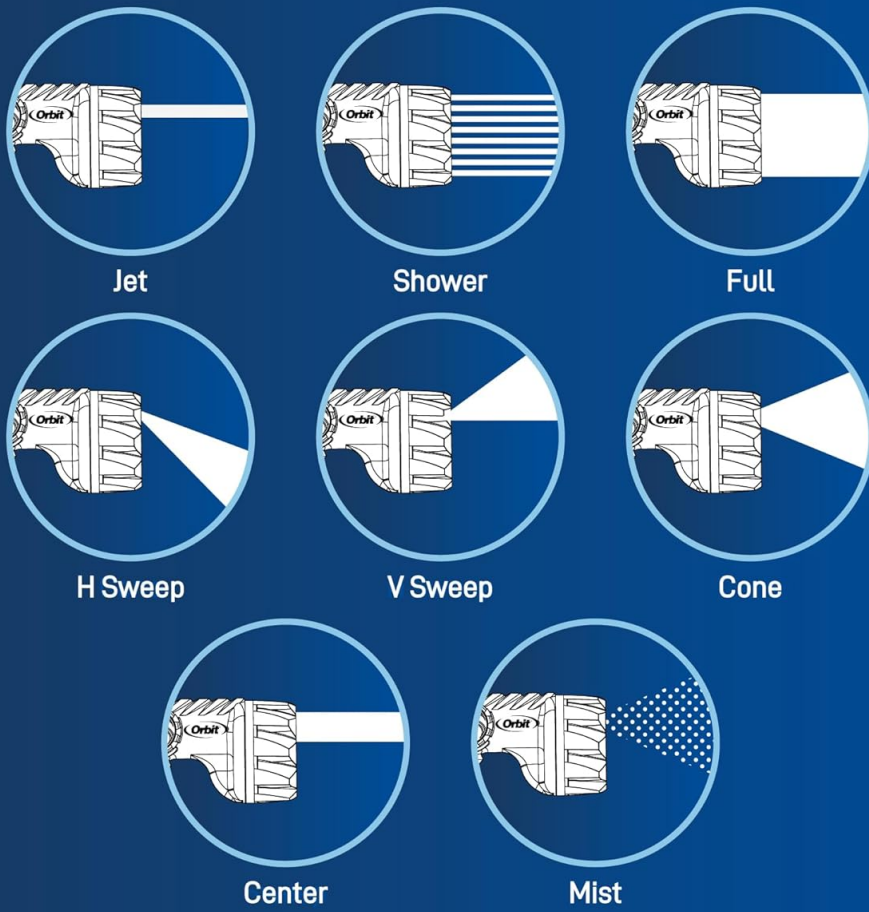


Figure 3: 8 Spray Patterns. This diagram illustrates the eight distinct spray patterns available: Jet, Shower, Full, H Sweep, V Sweep, Cone, Center, and Mist.

EASY-TO-USE THUMB-CONTROL

Set a Stable
Stream of
Water at Any
Level of
Flow



Figure 4: Easy-to-Use Thumb Control. The thumb control allows users to set a stable stream of water at any desired flow level.

OVERSIZED DIAL



**Quickly Switch
Spray Patterns
Without Removing
Work Gloves**

Figure 5: Oversized Dial. The oversized dial enables quick switching between spray patterns, even while wearing work gloves.

NON-SLIP GRIP



Figure 6: Non-Slip Grip. The rubberized handle provides a secure grip, even when wet.

SETUP

To set up your Orbit Pro Series Hose Nozzle, ensure your garden hose is equipped with a standard hose fitting. If your hose has a quick-connect fitting, ensure it is compatible with the nozzle's female hose thread inlet.

1. **Inspect Nozzle:** Before first use, check the nozzle for any visible damage or debris in the inlet.
2. **Connect to Hose:** Screw the nozzle onto the end of your garden hose. Hand-tighten until secure. Avoid over-tightening, which can damage the threads or internal washer.
3. **Check for Leaks:** Turn on the water supply slowly. Check the connection point for any leaks. If a leak occurs, tighten slightly or ensure the rubber washer inside the nozzle's inlet is properly seated.

OPERATING INSTRUCTIONS

Thumb Control Operation

The Orbit Pro Series nozzle features an intuitive thumb control for water flow. Simply push the lever forward with your thumb to increase water flow, and pull it back to decrease or shut off the flow. This allows for precise control without needing to constantly return to the spigot.

Adjusting Spray Patterns

To change the spray pattern, rotate the oversized dial at the front of the nozzle. The dial is designed for easy grip, even with wet hands or gloves. Align the desired pattern (Jet, Shower, Full, H Sweep, V Sweep, Cone, Center, Mist) with the indicator mark on the nozzle body.

MAINTENANCE

Proper maintenance will extend the life of your Orbit hose nozzle.

- **Cleaning:** Periodically clean the nozzle head to remove mineral deposits or debris that may affect spray patterns. Use a small brush or needle to clear any clogged holes.
- **Winterization:** Before freezing temperatures, disconnect the nozzle from the hose and drain any remaining water. Store the nozzle indoors in a dry, protected area to prevent damage from freezing.
- **Washer Replacement:** If leaks occur at the hose connection, check the rubber washer inside the nozzle. Replace it if it appears worn or cracked.

TROUBLESHOOTING

Problem	Possible Cause	Solution
Water leaking from hose connection	Loose connection, worn/missing washer	Tighten connection; replace rubber washer.
Low water pressure/weak spray	Clogged nozzle head, low water supply pressure	Clean nozzle holes; check water supply.
Difficulty changing spray patterns	Debris in dial mechanism, stiff mechanism	Rinse dial with water; apply silicone lubricant if needed.
Thumb control is stiff or stuck	Mineral buildup, internal wear	Flush with water; if persistent, contact support.

SPECIFICATIONS

- **Material:** Zinc
- **Brand:** Orbit
- **Item Dimensions (L x W x H):** 2.6 x 5.75 x 5.25 inches
- **Exterior Finish:** Metal
- **Inlet Connection Type:** Female Hose Thread
- **Outlet Connection Type:** G Connector
- **Valve Type:** Ball Valve
- **Item Weight:** 13.7 ounces
- **Model Number:** 26812
- **Size:** 8-Pattern
- **Color:** Black
- **Style:** Thumb Control
- **Pattern:** 8-Pattern Pro
- **UPC:** 046878268128

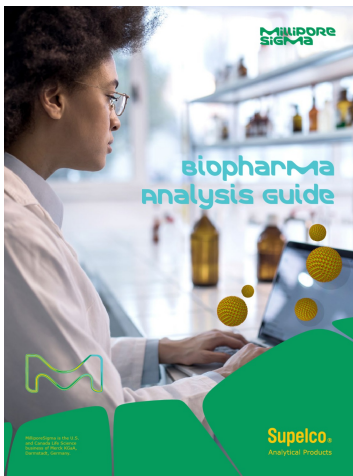
The Orbit Pro Series 8-Pattern Thumb Control Hose Nozzle Sprayer is designed for durability and long-lasting performance. Some users have reported a lifetime warranty for this product, indicating Orbit's commitment to quality.

For specific warranty claims, technical support, or replacement parts, please contact Orbit customer service directly. Refer to the product packaging or the official Orbit website for the most current contact information.

Online Support: Visit the official Orbit website for FAQs, product registration, and additional support resources.

Customer Service: Contact Orbit customer service via phone or email for personalized assistance.

Documents - Orbit – 26812

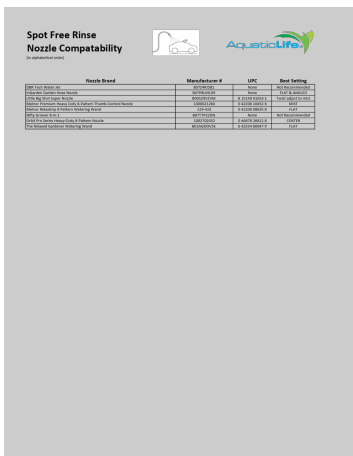


[\[pdf\]](#) Guide

Biopharma Analysis Guide Sigma Aldrich Several of the block buster drugs today are monoclonal antibodies IgG1 1100 1200 1300 1400 1500 1600 1700 1800 Figure 5 Product ion spectra biopharma analysis guide ag12836en mk srsltid AfmBOoo vh6rn6

FTBnQ1b1TvPo5dyXPClf9UrOdSCmRDCJ3yAnOSTc sigmaaldrich deepweb assets marketing global documents 330 114 |||

Biopharma Analysis Guide MilliporeSigma is the U.S. and Canada Life Science business of Merck KGaA, ... ssure 27212 = 260 bar Pressure 29612 = 284 bar Pressure 6212 = 50 bar SPP FPP Chromolith Pressure **26812** = 256 bar Pressure 29612 = 284 bar Pressure 6212 = 50 bar Figure 3: Comparison of separation ... lang:en score:17 filesize: 18.62 M page_count: 109 document date: 2024-05-22



AquaticLife Spot Free Rinse Nozzle Compatibility Chart

A comprehensive compatibility chart for various garden hose nozzles with the AquaticLife Spot Free Rinse system, detailing manufacturer numbers, UPCs, and recommended settings.

lang:tl score:12 filesize: 455.32 K page_count: 1 document date: 2019-11-12



[\[pdf\]](#) Guide Catalog

untitled CATALOGUE INTERNATIONAL il y a 5 jours — fournit des données de référence pour usage clinique Les Batterie guide démarrage rapide mode d'emploi GB IT pack 2 7 Vista USB 0 min Catalogue GIMA International 2024 LR FRA gimaitaly fr assets cataloghi |||

CATALOGUE INTERNATIONAL PRODUITS PROFESSIONNELS MDICAUX 2024
TESTS DE DIAGNOSTIC LABORATOIRE PROTE ... ce Luer - 15 cm - bords aigus
26984 Pince Ruskin Liston - 18 cm 26811 Pince Bozeman droite - 26 cm **26812** Pince
Bozeman courbe - 26 cm 44 INSTRUMENTS MDICAUX ET CHIRURGICAUX -
SERINGUES KIT INSTRUM...

lang:fr score:10 filesize: 51.43 M page_count: 468 document date: 2023-06-13