

## Manuals+

[Q & A](#) | [Deep Search](#) | [Upload](#)

manuals.plus /

› [Tamagotchi](#) /

› [Tamagotchi Original - Rainbow User Manual](#)

## Tamagotchi 42805

# Tamagotchi Original - Rainbow User Manual

Model: 42805

## INTRODUCTION

---

The Tamagotchi Original is a digital pet that requires care and attention. This manual provides instructions for setting up, operating, and maintaining your Tamagotchi to ensure its healthy development and your enjoyment.

## SAFETY INFORMATION

---

**WARNING: CHOKING HAZARD - Small Parts. Not for children under 3 years.**

## WHAT'S IN THE BOX

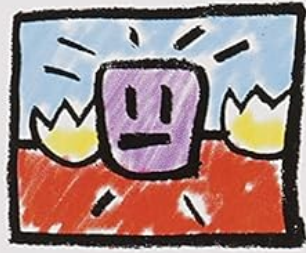
---

- One Original Tamagotchi Toy
- One Chain with Battery Inside

BAN  
DAI

the original  
**TAMAGOTCHI**

8+  
Asst.  
#42800



Take Care  
of Me!



the original virtual reality pet

 **WARNING:** Contains button or coin cell battery. Hazardous if swallowed. See instructions.

 **WARNING: CHOKING HAZARD.** Small parts. Not for children under 3 years.

Image: Front view of the Tamagotchi Original Rainbow packaging, showing the device inside a clear plastic window.

## SETUP

---

### Battery Installation and Initial Activation

1. Your Tamagotchi comes with a CR2032 Lithium Metal battery pre-installed.
2. To activate your Tamagotchi, pull the plastic tab protruding from the battery compartment.
3. The screen will display an egg. Press the 'A' button (leftmost) to hatch your Tamagotchi.
4. Set the current time using the 'A' and 'B' buttons (left and middle) to adjust and 'C' button (rightmost) to confirm.



## OPERATING YOUR TAMAGOTCHI

Your Tamagotchi requires regular care to grow and thrive. Pay attention to its needs indicated by beeps and on-screen icons.

### Controls

- **Button A (Left):** Selects options and scrolls through menus.
- **Button B (Middle):** Confirms selections.
- **Button C (Right):** Cancels selections or returns to the previous screen.

### Caring for Your Tamagotchi

Navigate through the icons at the top of the screen using Button A and confirm with Button B to perform actions.

- **Feed:** Select the fork and knife icon to feed your Tamagotchi a meal or a snack. Meals fill hunger, snacks fill happiness.
- **Lights:** Select the light bulb icon to turn lights on or off. Turn lights off when your Tamagotchi sleeps.
- **Play:** Select the game controller icon to play a character game. Guess which way your Tamagotchi will move next to increase happiness.
- **Medicine:** Select the syringe icon if your Tamagotchi becomes sick. Administer medicine to cure it.
- **Toilet:** Select the toilet icon to clean up after your Tamagotchi uses the bathroom. Neglecting this will make your Tamagotchi sick.
- **Health Check:** Select the heart icon to view your Tamagotchi's health status, including hunger, happiness, and discipline.
- **Discipline:** Select the angry face icon to discipline your Tamagotchi if it misbehaves (e.g., beeps for attention when it's full and happy).



Image: A hand holding the Tamagotchi device, demonstrating its compact size and portability.

### Life Cycle

Your Tamagotchi will evolve through different stages: from an egg, to a child, and then to an adult. The care you provide will influence which of the seven adult characters your Tamagotchi becomes.

## MAINTENANCE

---

### Cleaning

Wipe the device with a soft, dry cloth. Do not use liquid cleaners or immerse the device in water.

### Battery Replacement

When the screen becomes dim or the device stops responding, it may be time to replace the battery. The Tamagotchi uses one CR2032 Lithium Metal battery. Refer to the battery compartment on the back of the device for instructions on opening and replacing the battery.

## TROUBLESHOOTING

---

- **Device not turning on or screen is blank:** Ensure the battery tab has been removed. If it has, the battery may be depleted. Replace the CR2032 battery.
- **Screen is dim:** This is often an indication of a low battery. Replace the CR2032 battery.
- **Tamagotchi is constantly sick:** Ensure you are cleaning up after your Tamagotchi promptly when it uses the bathroom. Also, avoid overfeeding snacks.
- **Tamagotchi is not evolving:** Consistent care is key to evolution. Ensure you are feeding, playing, and disciplining your Tamagotchi regularly.
- **Buttons are unresponsive:** Try removing and reinserting the battery to reset the device. If the issue persists, the device may require service.

## SPECIFICATIONS

---

Feature	Detail
Model Number	42805
UPC	045557428051
Dimensions	3 x 2.4 x 1 inches
Item Weight	3.2 ounces
Power Source	Battery Powered
Battery Type	1 Lithium Metal battery (CR2032)
Display Type	LCD
Material	Plastic
Recommended Age	8 years and up
Manufacturer	Bandai America Inc.

## WARRANTY AND SUPPORT

---

For information regarding product warranty, returns, or technical support, please contact Bandai America Inc. directly or refer to their official website. Keep your proof of purchase for any warranty claims.

Additional resources may be available on the official Tamagotchi website: [Bandai Tamagotchi Official Site](#)