

Manuals+

[Q & A](#) | [Deep Search](#) | [Upload](#)

Manuals.plus /

› [Tamagotchi](#) /

› Tamagotchi Original (Model 42801) - Purple Electronic Pet Instruction Manual

Tamagotchi 42801

Tamagotchi Original (Model 42801) - Purple Electronic Pet Instruction Manual

Your Guide to Nurturing Your Digital Companion

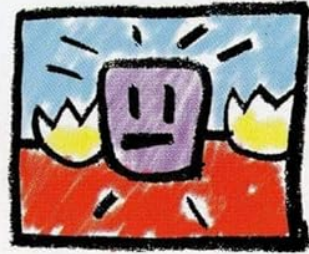
1. INTRODUCTION

Welcome to the world of Tamagotchi! The Tamagotchi Original is a virtual pet that requires your care and attention to grow and thrive. This manual will guide you through all the essential steps to ensure your digital companion lives a happy and healthy life.

**BAN
DAI**

the original TAMAGOTCHI

8+
Asst.
#42800



Play
CHARACTER
Game!



Take Care
of Me!



Feed Me!

the original virtual reality pet

WARNING: Contains button or coin cell battery. Hazardous if swallowed. See instructions.

WARNING: CHOKING HAZARD - Small parts. Not for children under 3 years.

Image 1: The Tamagotchi Original device in its purple packaging, showcasing the classic egg-shaped design.

2. SETUP AND INITIAL ACTIVATION

Your Tamagotchi comes with a pre-installed CR2032 battery. To begin, you need to activate the device.

1. **Pull the Tab:** Locate the plastic pull-tab protruding from the side or back of the device. Gently pull this tab out completely to activate the battery.
2. **Initial Screen:** The screen will display an egg. This indicates your Tamagotchi is ready to hatch.
3. **Set Time:** Use the control buttons (A, B, C) to set the current time. Button A typically moves the cursor, Button B selects, and Button C cancels or goes back. Refer to the "Operating the Device" section for detailed button functions.

Your browser does not support the video tag.

Video 1: A demonstration of the initial setup process, including pulling the battery tab and the egg hatching sequence on a Tamagotchi device.

3. OPERATING THE DEVICE

The Tamagotchi Original features three primary buttons for interaction:

- **Button A (Left):** Selects options or moves the cursor forward.
- **Button B (Middle):** Confirms selection or performs an action.
- **Button C (Right):** Cancels an action or returns to the previous screen.

To navigate through the various icons and menus, use Button A to cycle through options and Button B to select.





Image 2: A close-up view of the Tamagotchi Original device, highlighting the screen and the three control buttons for user interaction.

4. CARING FOR YOUR TAMAGOTCHI

Your Tamagotchi requires daily attention to grow from an egg to a baby, then a child, and finally an adult. The type of adult character it becomes depends on how well you care for it.

4.1. Feeding

When your Tamagotchi is hungry, a hunger icon will appear. Navigate to the food icon and select either a meal or a snack. Meals increase fullness, while snacks increase happiness but can lead to weight gain.

4.2. Playing

Play games with your Tamagotchi to keep it happy and prevent boredom. The Character game involves guessing which way your Tamagotchi will move next. Winning games increases happiness.

4.3. Cleaning

Your Tamagotchi will occasionally leave droppings. Navigate to the clean-up icon to remove them. Failing to clean up can make your Tamagotchi sick.

4.4. Discipline

If your Tamagotchi misbehaves (e.g., calls for attention when it doesn't need anything), use the discipline icon to correct its behavior. This helps in raising a well-behaved adult character.

4.5. Health Check

Regularly check your Tamagotchi's health status by navigating to the status icon. This will show its hunger, happiness, and discipline levels. If it's sick, administer medicine via the medicine icon.





Image 3: The Tamagotchi Original screen displaying a happy digital pet, indicating good care.

5. GROWTH STAGES AND EVOLUTION

Your Tamagotchi will evolve through several stages:

1. **Egg:** The initial stage after activation.
2. **Baby:** Hatches from the egg after a few minutes. Requires frequent feeding and cleaning.
3. **Child:** Evolves from baby stage. Requires continued care, including playing games.
4. **Adult:** The final stage, reached after the child stage. The adult character type is determined by the care it received in previous stages. There are 7 possible adult characters.



Image 4: A collection of Tamagotchi devices, illustrating the variety of colors available and the compact size of the digital pets.

6. MAINTENANCE

6.1. Battery Replacement

The Tamagotchi Original uses one CR2032 lithium metal battery. When the battery is low, the screen may dim or the device may not respond. To replace the battery:

1. Locate the battery compartment on the back of the device.
2. Use a small screwdriver to open the compartment.
3. Remove the old battery and insert a new CR2032 battery with the positive (+) side facing up.
4. Close the compartment securely.

Note: Replacing the battery will reset the Tamagotchi's progress.

6.2. Cleaning

Wipe the device with a soft, dry cloth. Avoid using harsh chemicals or abrasive materials.

7. TROUBLESHOOTING

- **Screen is blank:** Ensure the battery tab is fully removed. If it is, try replacing the CR2032 battery.
- **Tamagotchi is sick:** Navigate to the medicine icon and administer treatment. Ensure regular cleaning and feeding to prevent sickness.
- **Tamagotchi is not responding:** Check battery level. If the battery is low, replace it. If the issue persists, try resetting the device by pressing the reset button (usually a small, recessed button on the back) with a pointed object. Note that resetting will erase all progress.
- **Sound issues:** Check the sound settings. Some models allow sound to be turned on/off.

8. SPECIFICATIONS

Feature	Detail
Model Number	42801
Brand	Tamagotchi
Color	Purple
Power Source	1 x CR2032 Lithium Metal Battery (included)
Display Type	LCD
Item Dimensions (L x W x H)	3" x 2.4" x 1"
Item Weight	0.2 Pounds
Material Type	Plastic
Age Range	8+ years

9. WARRANTY AND SUPPORT

For warranty information and customer support, please refer to the manufacturer's official website or contact their customer service department. Keep your purchase receipt as proof of purchase.

Manufacturer: Bandai

10. SAFETY INFORMATION

WARNING: CHOKING HAZARD - Small parts. Not for children under 3 years. Contains button or coin cell battery. Hazardous if swallowed. See instructions.