

## Cata GL 75 X

# Cata GL 75 X Extractor Hood User Manual

Model: GL 75 X (2131305)

Brand: Cata

## 1. INTRODUCTION

This manual provides essential information for the safe and efficient use, installation, and maintenance of your Cata GL 75 X Integrated Filter Group Extractor Hood. Please read these instructions carefully before installation and operation, and retain them for future reference.

## 2. SAFETY INFORMATION

To ensure safe operation, observe the following precautions:

- Ensure the electrical installation complies with local regulations.
- Disconnect the appliance from the power supply before any cleaning or maintenance.
- This appliance is not intended for use by persons (including children) with reduced physical, sensory or mental capabilities, or lack of experience and knowledge, unless they have been given supervision or instruction concerning use of the appliance by a person responsible for their safety.
- Do not flambé under the extractor hood.
- Regularly clean the filters to prevent fire hazards.
- The air must not be discharged into a flue that is used for exhausting fumes from appliances burning gas or other fuels.

## 3. PRODUCT OVERVIEW

The Cata GL 75 X is an integrated filter group extractor hood designed for efficient air extraction in your kitchen. It features a stainless steel finish, touch controls, and multiple extraction levels.

### Key Features:

- Touch Control Panel with automatic disconnection timer and filter cleaning indicator.
- 4 extraction levels (3 standard + 1 TURBO).
- BT3 Motor for extra quiet operation.
- Stainless steel construction.

### Components:

The hood consists of the main body, metallic grease filters, and an integrated control panel.



Figure 3.1: Front view of the Cata GL 75 X Extractor Hood, showing the metallic filters, integrated lighting, and touch control panel.



Figure 3.2: Close-up of a metallic grease filter, designed for easy removal and cleaning.



## 4. SETUP AND INSTALLATION

Installation should be performed by a qualified technician in accordance with all applicable local and national regulations. Ensure adequate ventilation in the room.

### Dimensions:

Refer to the dimensional drawing for precise measurements required for cabinet integration.

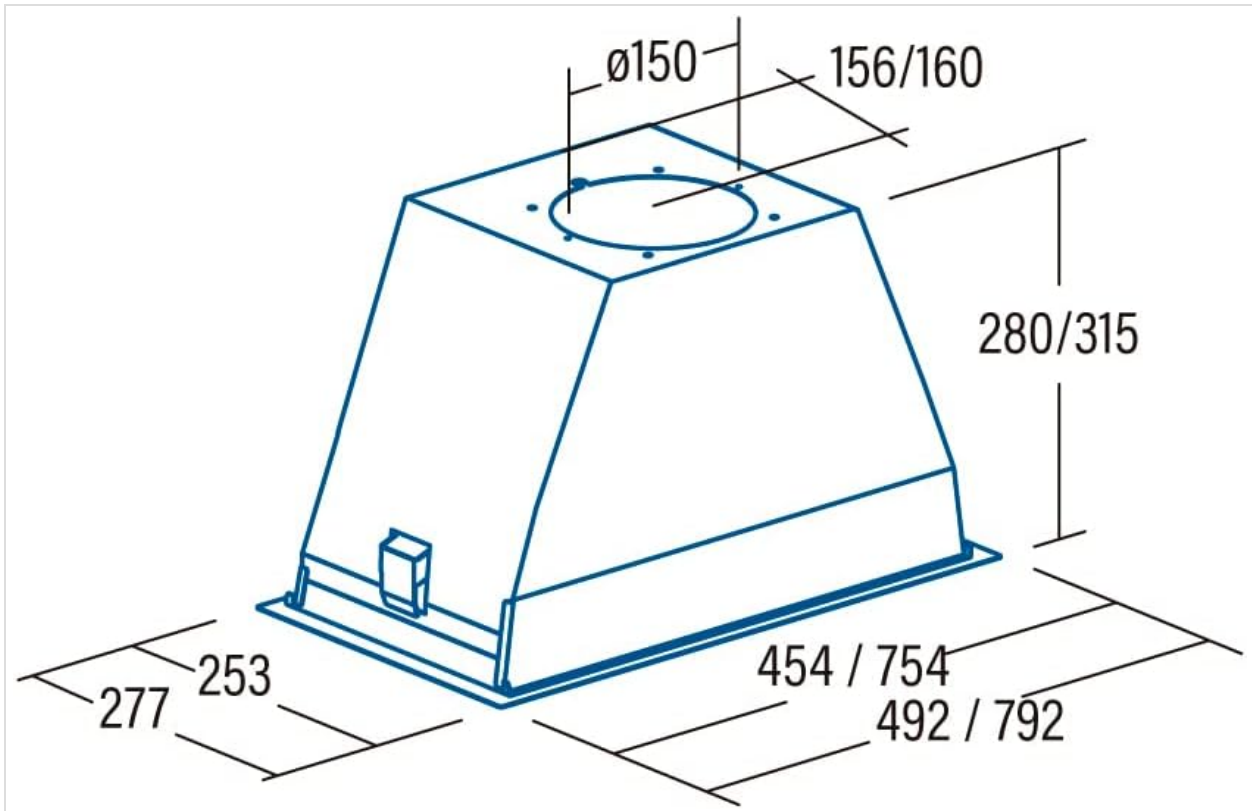
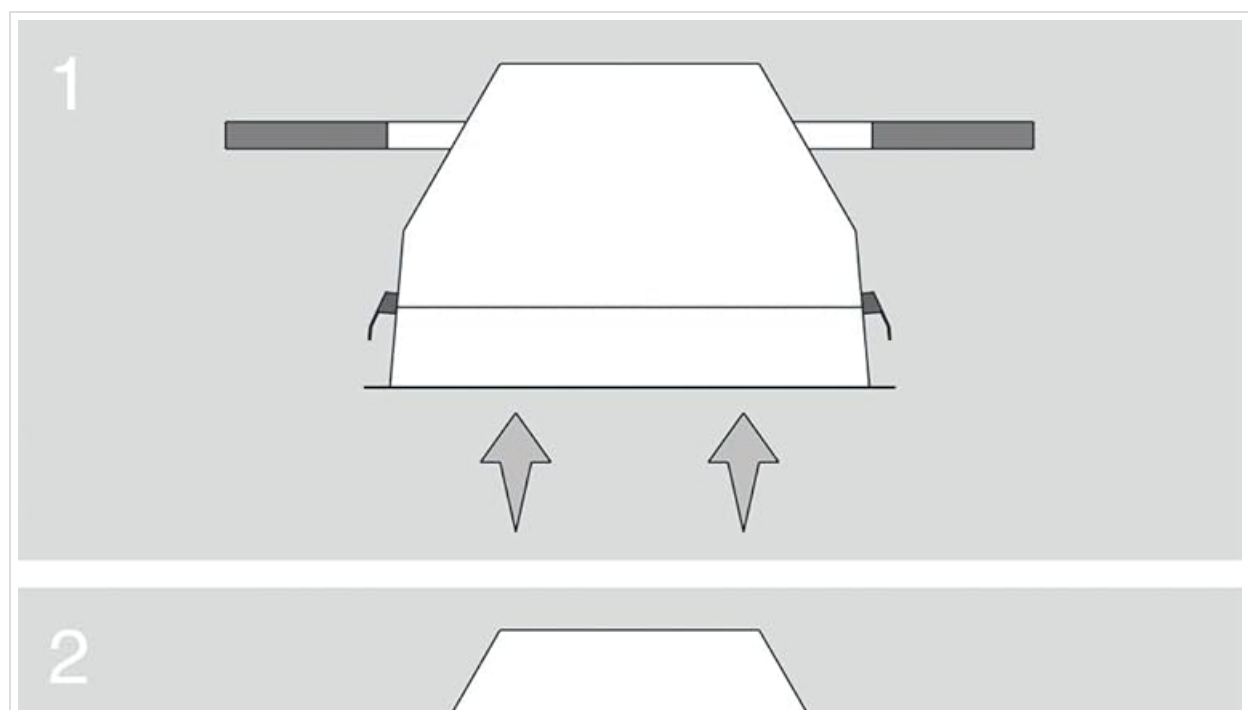


Figure 4.1: Dimensional drawing of the extractor hood, showing measurements in millimeters (e.g., width 454/754, depth 277, height 280/315, duct diameter  $\varnothing 150$ ).

### Installation Steps:

The following diagram illustrates the general installation process for integrating the hood into a cabinet.



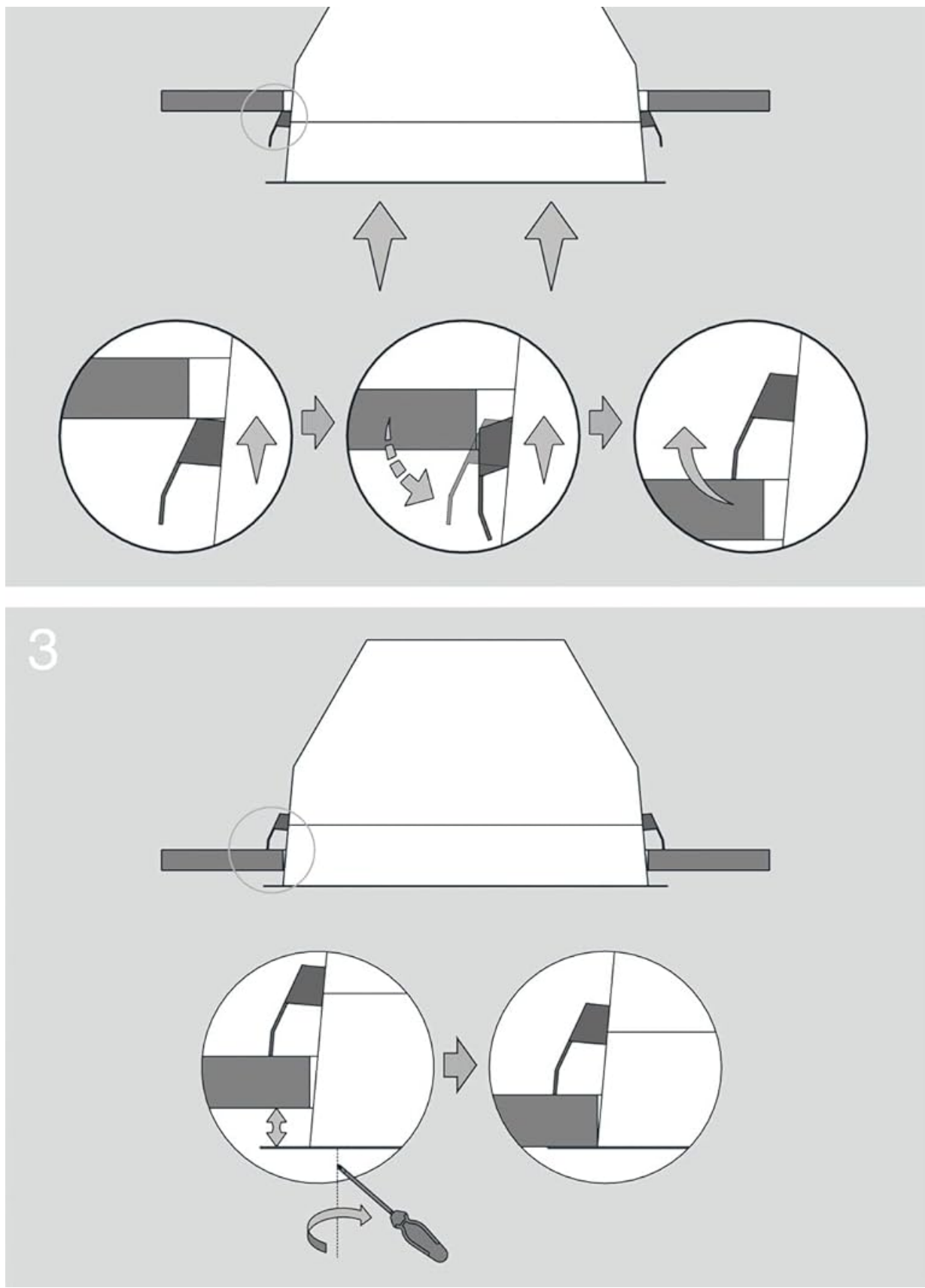


Figure 4.2: Installation diagram. Step 1 shows the hood being inserted into the cabinet opening. Step 2 details securing the hood with clips. Step 3 illustrates tightening screws for final fixation.

## 5. OPERATING INSTRUCTIONS

The Cata GL 75 X features a touch control panel for easy operation.

### Control Panel Functions:

- **Power On/Off:** Press the power symbol to turn the hood on or off.

- **Extraction Levels:** Select from 3 standard extraction speeds. For intensive ventilation, activate the TURBO function.
- **Lighting:** Press the light symbol to turn the integrated lighting on or off.
- **Timer:** The automatic disconnection timer allows the hood to operate for a set period before turning off automatically. Consult the full manual for specific timer settings.
- **Filter Cleaning Indicator:** An indicator light will illuminate to remind you when the metallic grease filters require cleaning.

## 6. MAINTENANCE

Regular maintenance ensures optimal performance and longevity of your extractor hood.

### Cleaning the Exterior:

- Clean the stainless steel surfaces with a soft cloth and a non-abrasive cleaner specifically designed for stainless steel.
- Avoid using abrasive sponges, corrosive detergents, or harsh chemicals.

### Cleaning the Metallic Grease Filters:

- The metallic grease filters should be cleaned regularly, typically every 2-4 weeks depending on usage.
- To remove, locate the release latches on the filters and gently pull them down.
- Filters can be washed by hand in hot soapy water or in a dishwasher on a low-temperature cycle.
- Ensure filters are completely dry before re-installing.

### Light Bulb Replacement:

If the integrated lighting needs replacement, consult a qualified technician or refer to the detailed instructions in the complete product manual for your specific bulb type.

## 7. TROUBLESHOOTING

Before contacting customer service, check the following common issues:

Problem	Possible Cause	Solution
Hood does not turn on	No power supply; appliance not plugged in; circuit breaker tripped.	Check power connection; reset circuit breaker.
Low extraction power	Grease filters are dirty; ducting is obstructed; wrong speed setting.	Clean or replace filters; check ducting for obstructions; select a higher speed.
Excessive noise	Loose components; improper installation; ducting issues.	Check for loose parts; ensure secure installation; inspect ducting.
Lights not working	Bulb faulty; electrical connection issue.	Replace bulb (if accessible); check electrical connections.

## 8. SPECIFICATIONS

Feature	Detail
---------	--------

Feature	Detail
Brand	Cata
Model	GL 75 X (2131305)
Extraction Capacity (Max-Min)	820 m³/h - 340 m³/h (Reg.(EU) No.65/2014)
Noise Level (Min-Max)	50 dB(A) - 65 dB(A) (Reg.(EU) No.65/2014)
Motor Type	BT3 (Extra quiet)
Maximum Power Consumption	280 W
Energy Efficiency Class	A
Material	Alloy Steel (Stainless Steel finish)
Controls	Touch Control Panel
Mounting Type	Integrated / Cabinet Mounted
Product Dimensions (W x D x H)	Approx. 754mm x 277mm x 315mm (refer to diagram for exact variants)

## 9. WARRANTY AND SUPPORT

Your Cata GL 75 X Extractor Hood is covered by a manufacturer's warranty. Please refer to the warranty card included with your product for specific terms and conditions.

For technical assistance, spare parts, or warranty claims, please contact your retailer or an authorized Cata service center. You can find more information and contact details on the official Cata website or by visiting the [Cata Brand Store](#).