

Manuals.plus /

› Tonton /

› Tonton 4K Wireless Security Camera System Outdoor Instruction Manual (Model D5309HN8-W)

Tonton D5309HN8-W

Tonton 4K Wireless Security Camera System Outdoor Instruction Manual

Model: D5309HN8-W

1. INTRODUCTION

This manual provides comprehensive instructions for the setup, operation, maintenance, and troubleshooting of your Tonton 4K Wireless Security Camera System Outdoor, Model D5309HN8-W. This system features a 10-channel NVR with a 1TB HDD and four 3MP outdoor WiFi cameras, offering dual WiFi connectivity, PIR sensors, two-way audio, spotlight, and color night vision capabilities. It is designed for reliable outdoor surveillance and can integrate with smart home platforms like Amazon Alexa.

2. WHAT'S IN THE BOX

Verify that all components are present before beginning installation:

- 1 x 4K NVR with 1TB HDD
- 4 x 3MP Cameras
- 1 x 12V 2A 1.8M Power Supply for NVR
- 4 x 12V 1A 3M Power Supply for Cameras
- 4 Pack Screws

3. SETUP INSTRUCTIONS

3.1 System Overview and Power Connection

The Tonton wireless security camera system is designed for plug-and-play functionality. While cameras are wireless for video transmission to the NVR, each camera requires a power source. The system includes a 1.8-meter power cord for the NVR and 3-meter power cords for each camera, allowing for flexible positioning.

Before permanent installation, connect all cameras to their power sources and test their functionality. The WiFi cameras can also act as repeaters to extend the NVR's WiFi network for improved signal transmission.

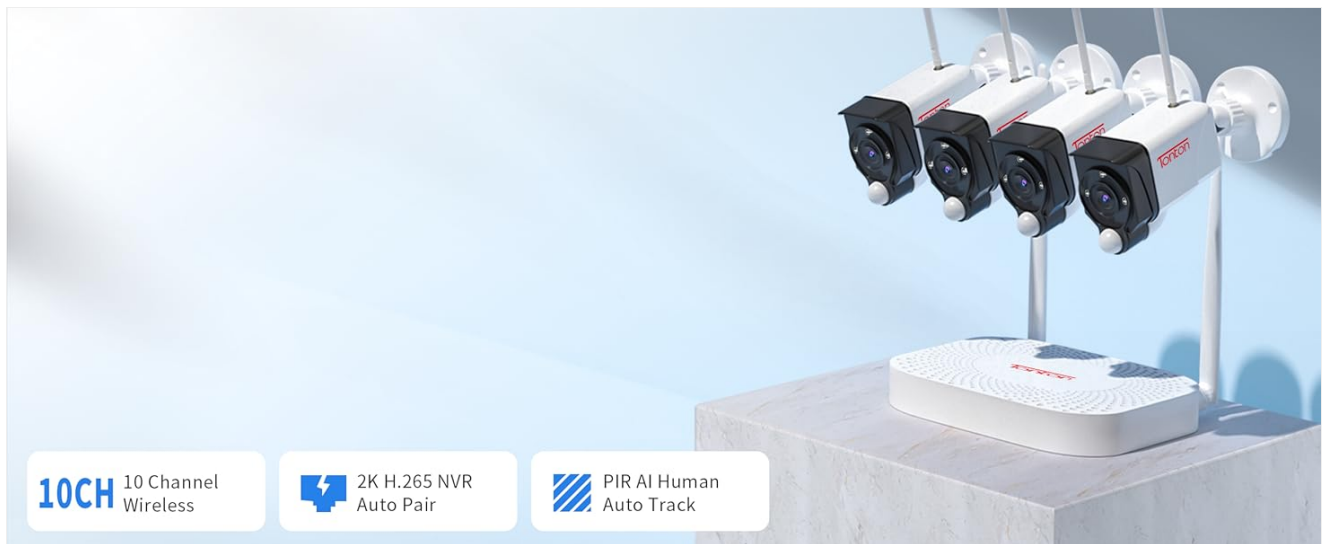


Figure 3.1: Overview of the 10-channel NVR and 4 camera system setup.

3.2 NVR and Camera Pairing

The NVR and cameras are pre-paired at the factory for ease of setup. The NVR features a built-in network card, allowing it to connect to your home network via WiFi directly, eliminating the need for an Ethernet cable for network access. For remote viewing, the NVR must be connected to your router either wirelessly or via an Ethernet cable.



Figure 3.2: Illustration of the plug-and-play setup for the wireless camera system with a hard drive.

3.3 Remote Access Setup

To enable remote viewing on your smartphone or PC, follow these steps:

1. Connect the NVR to your internet router via WiFi or an Ethernet cable.
2. Download the 'EseeCloud' app from your mobile app store.
3. Scan the device QR code within the app and add your device.
4. For PC/laptop viewing, download the 'ismkit' software from <http://www.dvr163.com/download/indexm.php>.



Figure 3.3: Connecting the NVR to the internet for remote access.



Figure 3.4: Downloading the EseeCloud app and adding your device for remote viewing.

3.4 Wireless Signal and Coverage

The system utilizes a strong wireless signal. In open spaces, the cameras can transmit up to 1000 feet. With obstacles, the range is up to 350 feet. The cameras also function as repeaters to enhance signal strength and coverage.

Your browser does not support the video tag.

Video 3.1: Demonstration of the wireless camera system's operation and signal coverage.

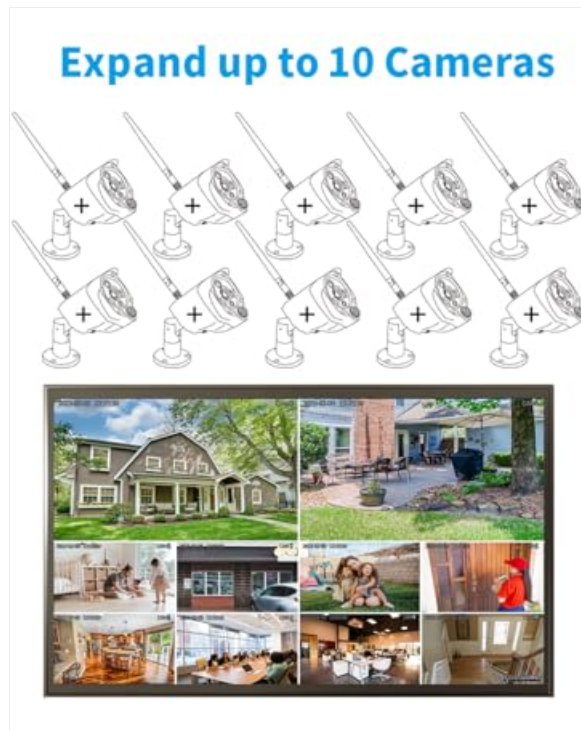


Figure 3.5: Diagram illustrating the expandable nature of the system, supporting up to 10 cameras.

4. OPERATING INSTRUCTIONS

4.1 Video Quality and Night Vision

The 3.0MP (2304x1296) cameras provide video clarity approximately 1.5 times greater than 1080P systems. Infrared LED arrays enable up to 100 feet of night vision in low-light conditions. The cameras feature a spotlight and siren alarm, allowing for color night vision. Users can select between full color, infrared, or smart night vision modes (smart mode is default).



Figure 4.1: Demonstration of enhanced color night vision using spotlights and IR LEDs.

4.2 Motion Detection and Alerts

The system incorporates PIR, motion, and AI humanoid detection sensors to minimize false alarms caused by environmental factors like leaves or insects. The AI humanoid detection accurately identifies human shapes. When motion is detected, the system can send mobile notifications and email alerts. Cameras also feature a siren and the NVR has a buzzer for immediate warnings.

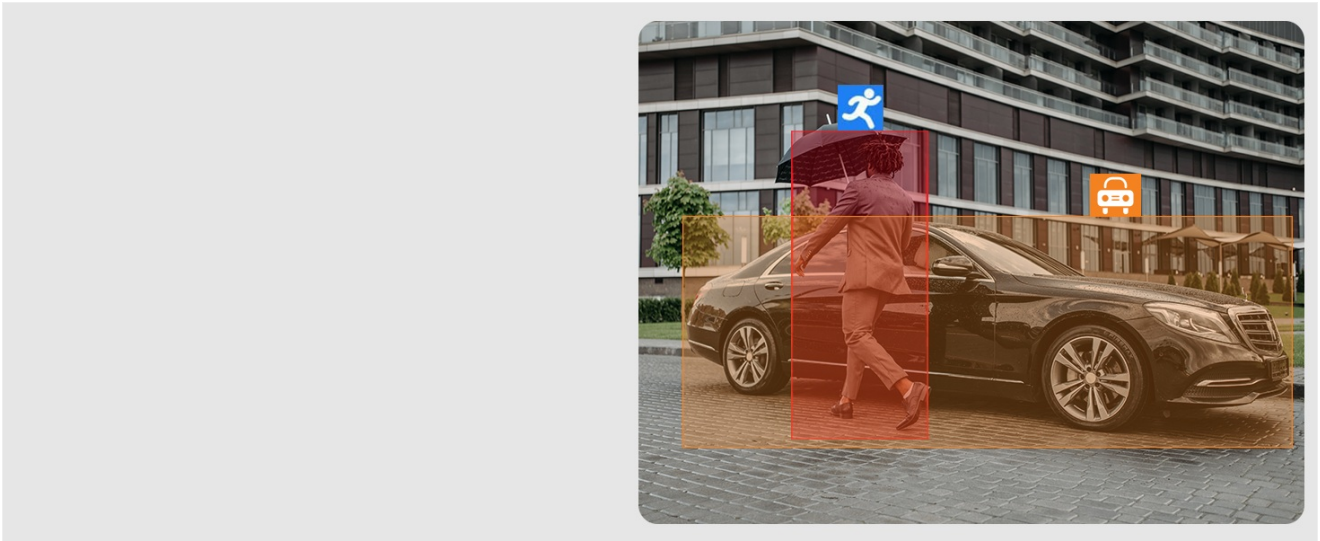


Figure 4.2: Illustration of AI Human Intelligent Detection providing app push notifications and email warnings.

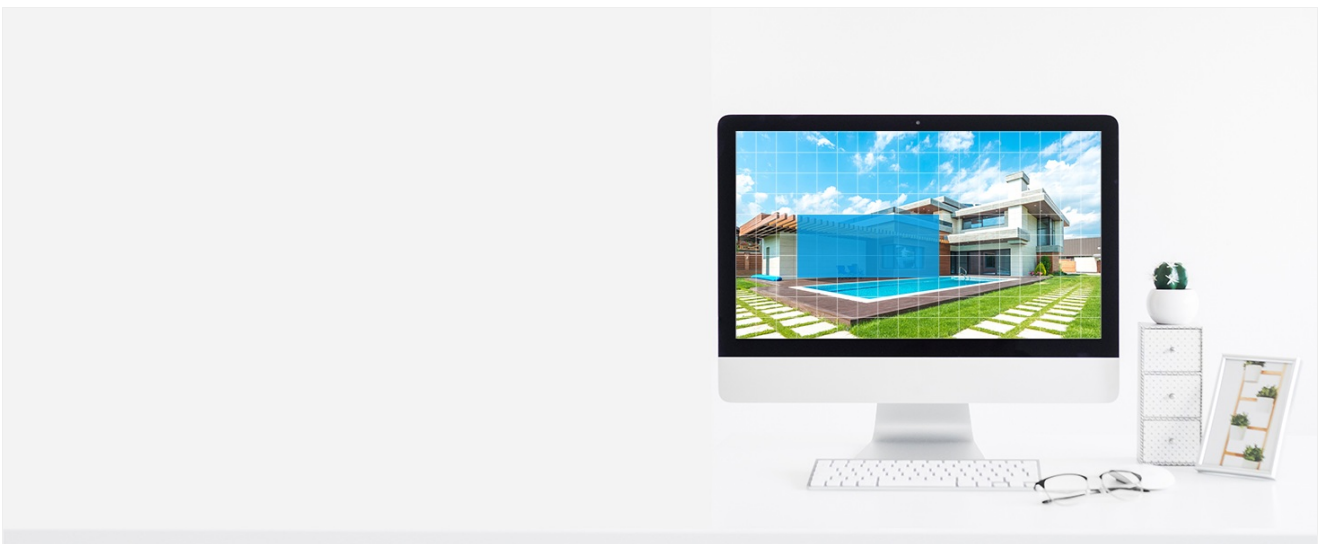


Figure 4.3: Setting up custom motion detection areas to focus surveillance on specific zones.

4.3 Two-Way Audio

The cameras support two-way audio, allowing you to hear and speak through the camera using the mobile application. This feature is useful for communicating with visitors or deterring intruders.

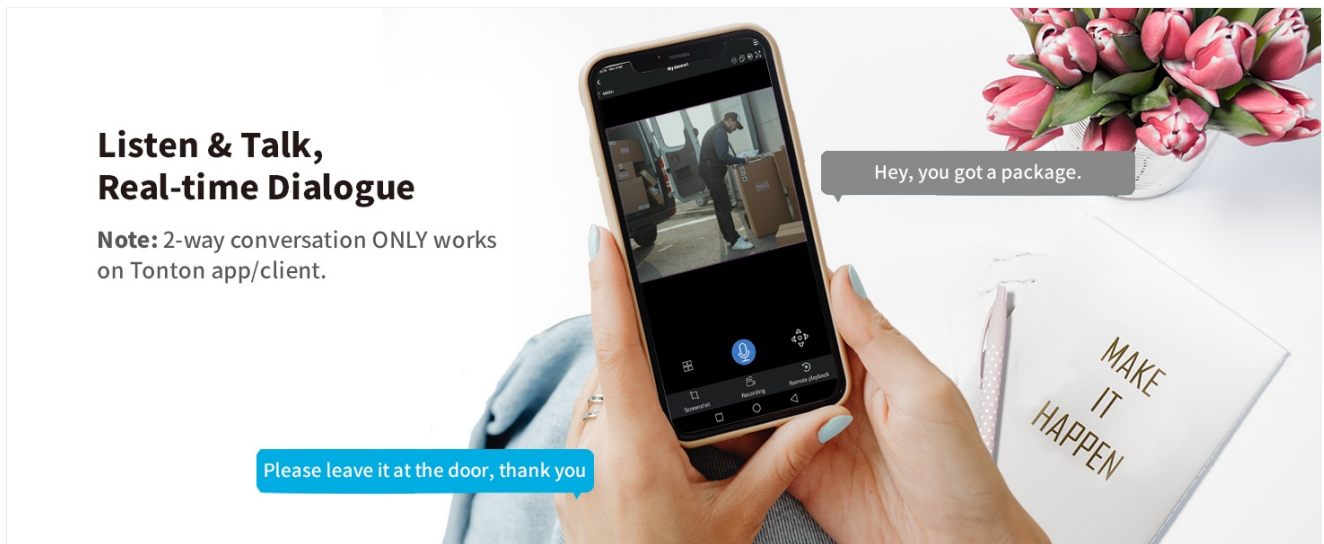


Figure 4.4: Using the two-way audio feature for real-time communication.

4.4 Smart Home Integration (Amazon Alexa)

The Tonton security camera system is compatible with Amazon Alexa. You can use voice commands to view camera feeds on compatible Alexa-enabled devices.

1. Download the Amazon Alexa App.
2. Register an Amazon Alexa user account.
3. Navigate to "Skills & Games" in the Alexa app.
4. Search for "EseeCloud camera" skill and enable it.
5. Link your IP PRO account by entering your username and password.
6. Discover devices.
7. Once discovered, you can say, for example, "Alexa, show me the [device name]" to view the camera feed.

Your browser does not support the video tag.

Video 4.2: Instructions on how to integrate and operate the system with Amazon Alexa.



Figure 4.5: The security system's compatibility with Amazon Alexa for voice control.

5. MAINTENANCE

5.1 Weather Resistance and Durability

The outdoor cameras feature a durable, high-quality metal casing with an IP66 waterproof rating, ensuring reliable operation in various weather conditions, including temperatures as low as -30°C (-22°F) and as high as 60°C (140°F). Regular visual inspection of the camera housing and connections is recommended to ensure continued weather resistance.



Figure 5.1: A weather-resistant outdoor camera mounted on a wall, demonstrating its robust design.

5.2 Storage Management

The NVR comes with a pre-installed 1TB hard drive, supporting over 30 days of continuous 24-hour video recording. The storage capacity is expandable up to 6TB. The system uses advanced H.265+ video compression technology, which saves approximately 50% of hard disk space compared to older compression methods, allowing for smoother video playback and longer recording times.

When the hard drive is full, it will automatically overwrite the oldest recordings. To maximize recording duration, consider using the Motion+PIR detection mode, which records only when activity is detected.



Figure 5.2: Comparison illustrating the efficiency of H.265+ video compression in saving storage space.

6. TROUBLESHOOTING

Problem	Possible Cause	Solution
No camera display on NVR.	Camera not powered, out of range, or not paired.	Ensure camera is powered. Check camera's proximity to NVR. If issues persist, re-pair the camera (refer to NVR manual for pairing steps).
Remote viewing not working.	NVR not connected to internet, incorrect app setup, or network issues.	Verify NVR is connected to your router (WiFi or Ethernet). Check 'EseeCloud' app settings and ensure device is added correctly. Confirm internet connectivity.
Frequent false alarms.	Motion detection sensitivity too high, environmental factors.	Adjust motion detection sensitivity in NVR settings. Utilize PIR and AI humanoid detection modes for improved accuracy. Define custom motion detection areas to exclude irrelevant zones.
Hard drive full, old recordings overwritten too quickly.	Continuous recording mode, small hard drive capacity.	Switch to Motion+PIR detection recording mode to record only events. Consider upgrading the hard drive to a larger capacity (up to 6TB).
Poor night vision quality.	Incorrect night vision mode, obstructions, or insufficient lighting.	Ensure cameras are set to the appropriate night vision mode (full color, infrared, or smart). Clear any obstructions from the camera's view. Verify spotlights are functioning if using color night vision.

7. SPECIFICATIONS

Feature	Detail
Brand	Tonton
Model Number	D5309HN8-W
Connectivity Technology	Wireless
Video Capture Resolution	4K, 2K, 3MP (2304*1296)
Number of Channels	10 (Expandable)
Memory Storage Capacity	1 TB (Expandable up to 6 TB)
Power Source	Corded Electric (12V DC)
Compatible Devices	Cameras, Personal Computers, Smartphones, TV, Tablets
Signal Format	IP Network
Camera Features	2K, PIR Sensor, Spotlight, 2 Way Audio, Metal Housing, 110 degree Viewing Angle, IP66, Color Night Vision, 360 degree adjustable bracket, works with Alexa
Night Vision Range	100 Feet
Antenna Type	Fixed
Frame Rate	15fps
Recording Mode	Event, Schedule
Optical Sensor Technology	CMOS
Total USB Ports	1
Hardware Interface	DisplayPort
Lens Type	Fixed (F=3.6mm)
Viewing Angle	110 Degrees
Item Dimensions	11.73 x 13.54 x 7.48 inches
Color	White

Easy Setup Guide

- 1 Powered & wireless-connected to router



- 2 Download Free EseeCloud App



- 3 Enjoy Live View

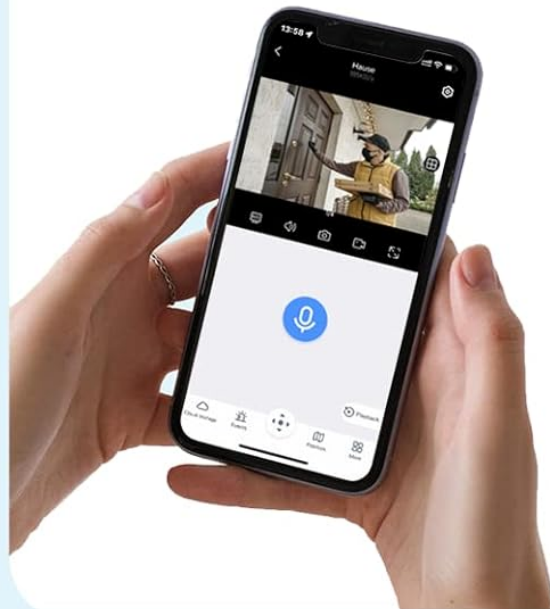


Figure 7.1: Detailed diagram of camera components and NVR connection ports.

8. WARRANTY AND SUPPORT

Tonton provides a **1-Year Warranty** for this product. Additionally, **Life-Time Tech Support** is available. For any questions or assistance, please contact us via email at sales@tontonsecurity.com.

You can also find support and resources on the Tonton store page: [Tonton Official Store](#).

