

Manuals+

[Q & A](#) | [Deep Search](#) | [Upload](#)

manuals.plus /

- › [BTF-LIGHTING](#) /
- › [BTF-LIGHTING 5M 5630 High-Density Flexible LED Strip User Manual](#)

BTF-LIGHTING 56305MNW60W30N

BTF-LIGHTING 5M 5630 High-Density Flexible LED Strip User Manual

Model: 56305MNW60W30N

1. INTRODUCTION

This manual provides comprehensive instructions for the BTF-LIGHTING 5M 5630 High-Density Flexible LED Strip. Please read this manual thoroughly before installation and use to ensure proper function and safety. This LED strip is designed for various indoor lighting applications, offering bright and efficient illumination.

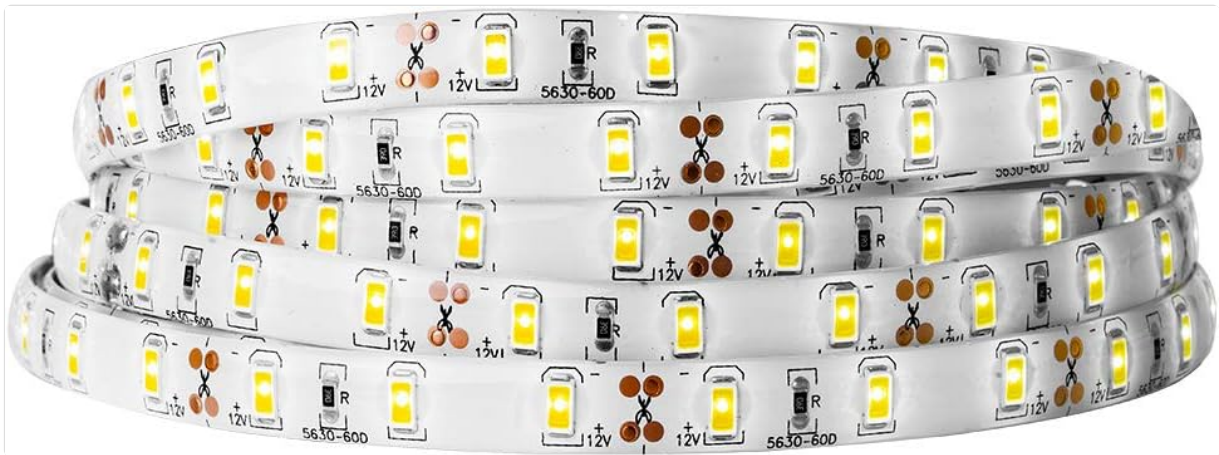


Image 1.1: The BTF-LIGHTING 5M 5630 Natural White LED Strip, coiled for packaging.

2. PRODUCT FEATURES

- High-quality 5630 SMD Top LEDs, 300 LEDs total (60 LEDs/meter), offering approximately 2 times the brightness of SMD5050 LEDs.
- Operates on DC 12V input voltage, ensuring low power consumption.
- The strip is cuttable every 3 LEDs along designated cut markers, allowing for customization without damaging the remaining sections.
- Features an IP30 rating, indicating it is not waterproof. Ideal for indoor residential and commercial lighting decoration.

- Easy and flexible installation with high-quality self-adhesive 3M backing, suitable for clean, dry, and flat surfaces.
- Long lifespan exceeding 50,000 hours.

3. SAFETY INFORMATION

Adhering to these safety guidelines is crucial for safe operation and to prevent damage to the product or injury.

- **Power Supply:** Always ensure the power supply is disconnected before installation, cutting, or any maintenance. Use only a compatible DC 12V power supply (not included). Do not connect directly to 220V/110V AC power.
- **Water Resistance:** This product has an IP30 rating, meaning it is **not waterproof**. Avoid exposure to moisture, water, or high humidity environments.
- **Bending:** Do not bend the LED strip sharply or at acute angles to prevent damage to the circuit board and LEDs. While flexible, excessive bending can cause component failure.
- **Heat:** Ensure adequate ventilation around the LED strip, especially when installed in enclosed spaces, to prevent overheating.
- **Cutting:** Only cut the LED strip at the designated cut marks. Cutting elsewhere will damage the circuit and render that section unusable.
- **Children:** Keep the product and its components out of reach of children.

4. PACKAGE CONTENTS

Verify that all items are present upon opening the package:

- 1 x 5-meter BTF-LIGHTING 5630 Natural White LED Strip

Note: A DC 12V power supply and dimmer are not included and must be purchased separately.

5. SETUP AND INSTALLATION

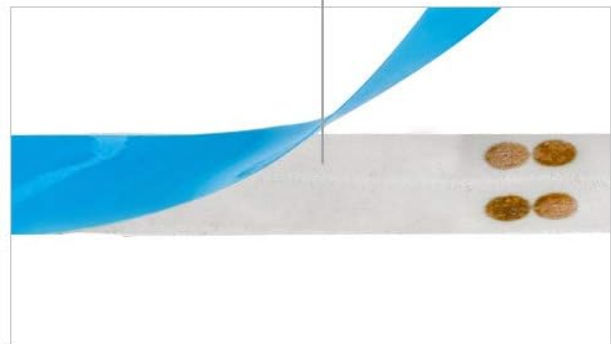
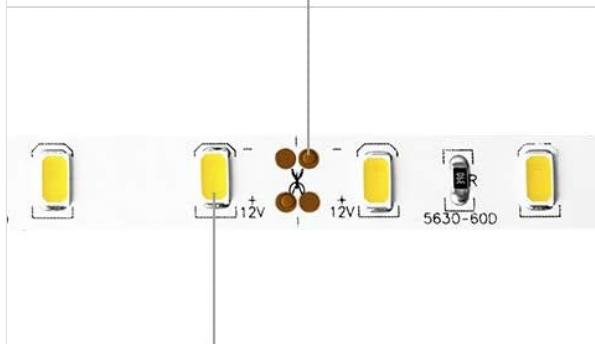
Follow these steps for proper installation of your LED strip:

1. **Prepare the Surface:** Ensure the installation surface is clean, dry, and smooth. Dust, oil, or moisture can compromise the adhesive's effectiveness.
2. **Measure and Cut (Optional):** If a shorter length is required, measure the desired length and cut the LED strip only at the designated cut marks (indicated by a copper pad and scissor icon). Each cut segment consists of 3 LEDs.
3. **Peel and Attach:** Carefully peel off the protective backing from the 3M adhesive tape on the back of the LED strip. Press the strip firmly onto the prepared surface, ensuring good contact along its entire length.
4. **Connect Power:** Connect the red wire of the LED strip to the positive (+) terminal of your DC 12V power supply and the black wire to the negative (-) terminal. Ensure correct polarity.
5. **Connect Dimmer (Optional):** If using a dimmer, connect it between the power supply and the LED strip, following the dimmer's specific instructions.
6. **Test:** Once all connections are secure, plug in the power supply to test the LED strip.



Cuttable

Flexible FPCB Design



Natural White

Double-Sided Tape

Image 5.1: Illustration of the LED strip's cuttable points, flexible FPCB design, and double-sided adhesive tape for installation.



Image 5.2: Visual guide demonstrating the two primary installation steps: cleaning the surface and then applying the LED strip.

6. OPERATING INSTRUCTIONS

Operating the BTF-LIGHTING LED strip is straightforward:

- **Power On/Off:** Connect the 12V DC power supply to a power outlet to turn on the LED strip. Disconnect or use a switch on your power supply/dimmer to turn it off.
- **Dimming:** If you have connected a compatible 12V DC dimmer (not included), use its controls to adjust the brightness level of the LED strip.

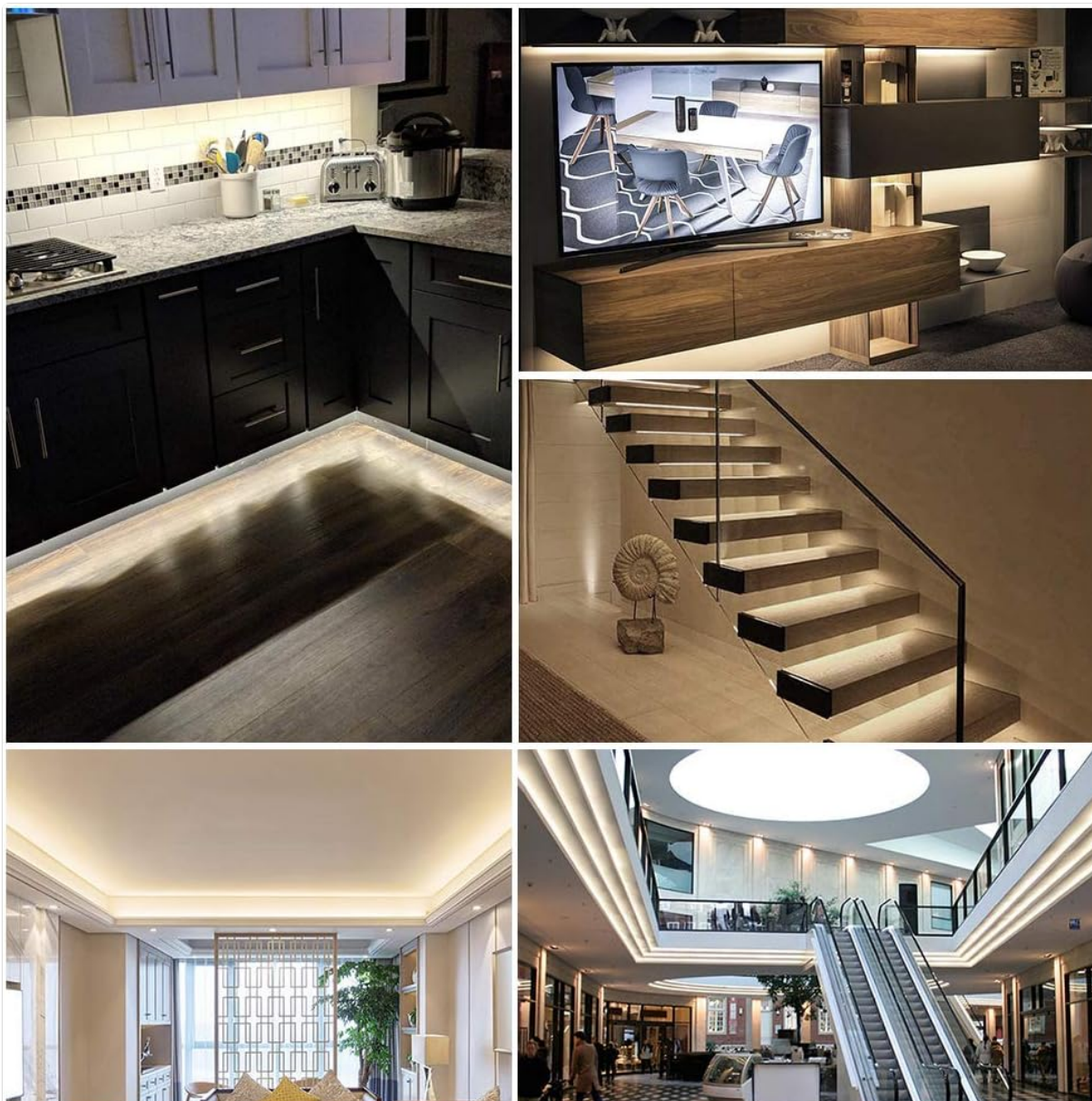


Image 6.1: Examples of the LED strip used in different indoor settings, including kitchen under-cabinet lighting, TV backlighting, stair lighting, and architectural accents.

7. MAINTENANCE

The BTF-LIGHTING LED strip requires minimal maintenance:

- **Cleaning:** Ensure the power is off before cleaning. Gently wipe the LED strip with a soft, dry cloth. Do not use abrasive cleaners or excessive moisture.
- **Inspection:** Periodically check the strip for any signs of damage, loose connections, or adhesive degradation.
- **Storage:** If storing the strip, ensure it is coiled loosely and kept in a dry, cool environment away from direct sunlight.

8. TROUBLESHOOTING

If you encounter issues with your LED strip, refer to the following common problems and solutions:

Problem	Possible Cause	Solution
---------	----------------	----------

Problem	Possible Cause	Solution
LED strip does not light up.	No power, incorrect wiring, faulty power supply.	Check power connections, ensure correct polarity (+ to +, - to -). Test power supply with another device if possible.
Only a section of the strip lights up.	Damage to the circuit after a cut, faulty segment.	Inspect the cut area for damage. If a segment is faulty, it may need replacement or isolation.
LEDs are flickering.	Unstable power supply, loose connection, incompatible dimmer.	Ensure power supply is stable and sufficient. Check all connections. If using a dimmer, ensure it is compatible with 12V DC LED strips.
Adhesive is not holding.	Surface not clean/dry, unsuitable surface material.	Ensure surface is thoroughly cleaned and dried before application. For rough or porous surfaces, consider using additional mounting clips or stronger adhesive.

9. SPECIFICATIONS

Detailed technical specifications for the BTF-LIGHTING 5M 5630 LED Strip:

Feature	Detail
Brand	BTF-LIGHTING
Model Number	56305MNMW60W30N
LED Type	SMD5630
LEDs per Meter	60 LEDs
Total LEDs	300 LEDs
Strip Length	5 meters
FPCB Width	10 mm
Input Voltage	DC 12V
Power Consumption	0.1 W/LED (Total 30W for 5M)
Recommended Power Supply	DC 12V 3A (or higher for longer strips)
Light Color	Natural White (approx. 4000K-4500K)
Lumen Output	23-25 lm/LED
Beam Angle	120 degrees
Operating Temperature	-20°C to 50°C

Feature	Detail
Protection Level	IP30 (Not waterproof)
Cutable Interval	Every 3 LEDs
Lifespan	> 50,000 hours

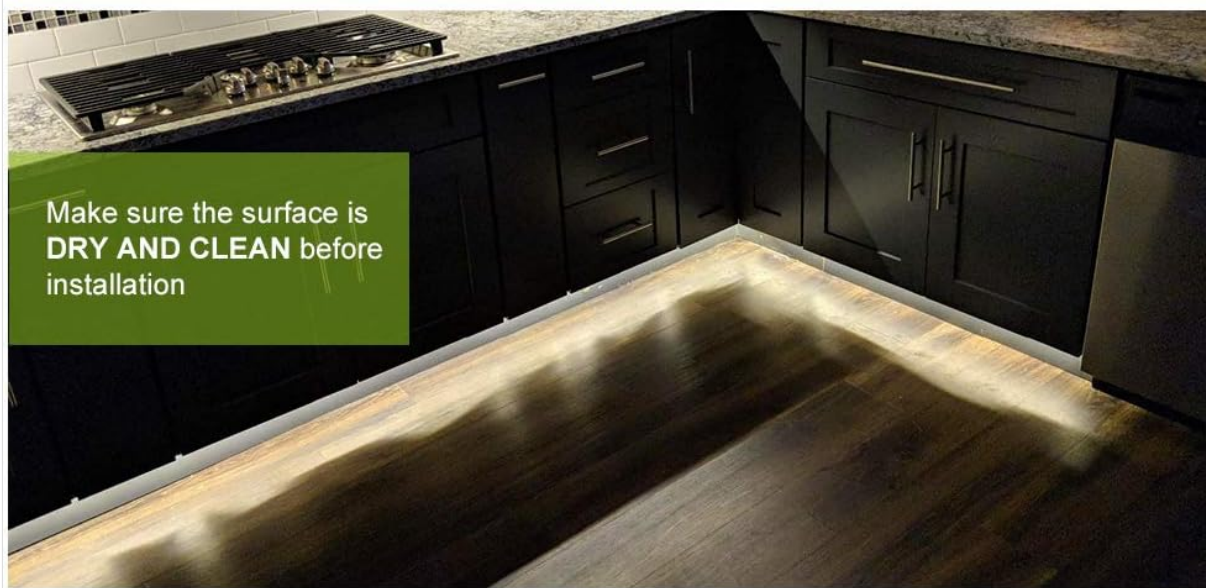


Image 9.1: This image illustrates different color temperatures of LED strips. The product covered in this manual is Natural White (4000K-4500K).

10. WARRANTY AND SUPPORT

This BTF-LIGHTING LED strip comes with a **1-year warranty** from the date of purchase, covering manufacturing defects.

For technical support, warranty claims, or any questions regarding your product, please contact BTF-LIGHTING customer service through your retailer or the official BTF-LIGHTING website. Please have your model number (56305MNW60W30N) and proof of purchase ready when contacting support.

