

LEONLITE ST7VPF-4P70W50

LEONLITE 4FT LED Vapor Tight Light Fixture User Manual

Model: ST7VPF-4P70W50

1. INTRODUCTION

Thank you for choosing the LEONLITE 4FT LED Vapor Tight Light Fixture. This manual provides essential information for the safe installation, operation, and maintenance of your new lighting fixture. Designed for durability and high performance, this 70W, 9000LM fixture features 0-10V dimming capability and an IP65 waterproof rating, making it suitable for various demanding environments.

Please read this manual thoroughly before installation and retain it for future reference.

2. SAFETY INFORMATION

To reduce the risk of death, personal injury, or property damage from fire, electric shock, falling parts, cuts/abrasions, and other hazards, please read all warnings and instructions included with and on the fixture box and all fixture labels.

- **WARNING:** Risk of electric shock. Disconnect power at the fuse or circuit breaker before installation or servicing.
- **WARNING:** Risk of fire. Minimum 90°C supply conductors. Consult a qualified electrician to ensure correct branch circuit conductor.
- **WARNING:** Risk of injury. Wear safety glasses and gloves during installation and servicing.
- This fixture must be installed in accordance with the National Electrical Code (NEC) and all applicable local codes.
- Ensure the supply voltage is compatible with the fixture's operating voltage (100-277V AC).
- Do not install near gas or electric heaters.
- Do not alter or modify the fixture.

3. PACKAGE CONTENTS

Verify that all components are present and undamaged before beginning installation.

- LEONLITE 4FT LED Vapor Tight Light Fixture
- Mounting Brackets (8 pieces)
- Plastic Expansion Tubes (16 pieces)

- Screws (16 pieces)
- Screw Shims (16 pieces)

Package Content

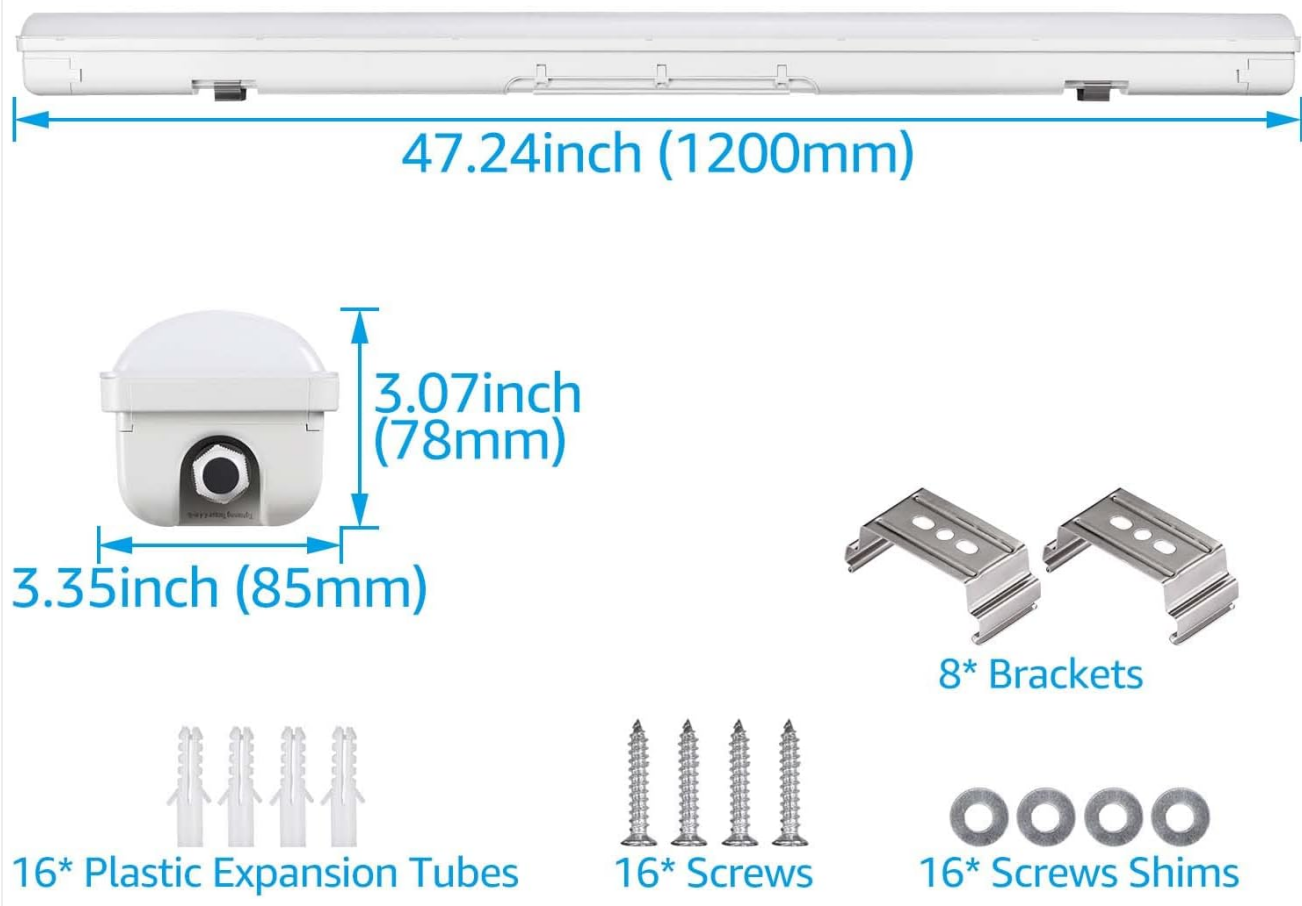


Image 3.1: Contents of the product package, including the light fixture and all necessary installation hardware.

4. SPECIFICATIONS

Feature	Detail
Model Number	ST7VPF-4P70W50
Wattage	70W
Luminous Flux	9000 Lumens
Color Temperature	5000K (Cool White)
Voltage	100-277V AC
Dimming	0-10V Dimmable (Dimmer not included)
Water Resistance	IP65 Waterproof Rating

Feature	Detail
Material	Polycarbonate (Housing & Shade), Aluminum&PC (Finish)
Product Dimensions	47.24"L x 3.35"W x 3.07"H
Lifespan	Up to 50,000 hours
Certifications	UL Listed
Operating Temperature	-20°F to 100°F
Installation Type	Semi Flush Mount (Surface Mount)



70W LED Vapor Tight Light Dimmable

Sourced from Internet



**Dimming range**
0-10V

**Voltage**
100-277VAC

**Luminous flux**
9000LM

**Beam angle**
120°

**Equivalent**
175W



Image 4.1: Key specifications and features of the LED Vapor Tight Light.

EXCELLENT SEALING NO NEED EXTRA LATCHES



Shatter Proof

Waterproof

Vapor Proof

Dustproof

Rustproof

Corrosion-resistant

Image 4.2: Illustration of the fixture's robust sealing and protective features.

5. SETUP AND INSTALLATION

Before installation, ensure the power supply is disconnected at the circuit breaker. Professional installation is recommended.

5.1 Mounting the Fixture

1. **Drill Holes:** Mark and drill four desired holes on the ceiling or mounting surface. The recommended distance between the two sets of holes is approximately 820mm (32.3 inches).
2. **Insert Expansion Tubes:** Tap the plastic expansion tubes into the drilled holes until they are flush with the surface.
3. **Secure Brackets:** Align the mounting brackets with the expansion tubes and screw through the brackets, inserting the screws into the nuts to secure them firmly.
4. **Mount Fixture and Wire:** Lift the fixture and fasten it onto the secured brackets. Connect the electrical wires according to the wiring diagram below. Ensure all connections are secure.

INSTALLATION INSTRUCTIONS

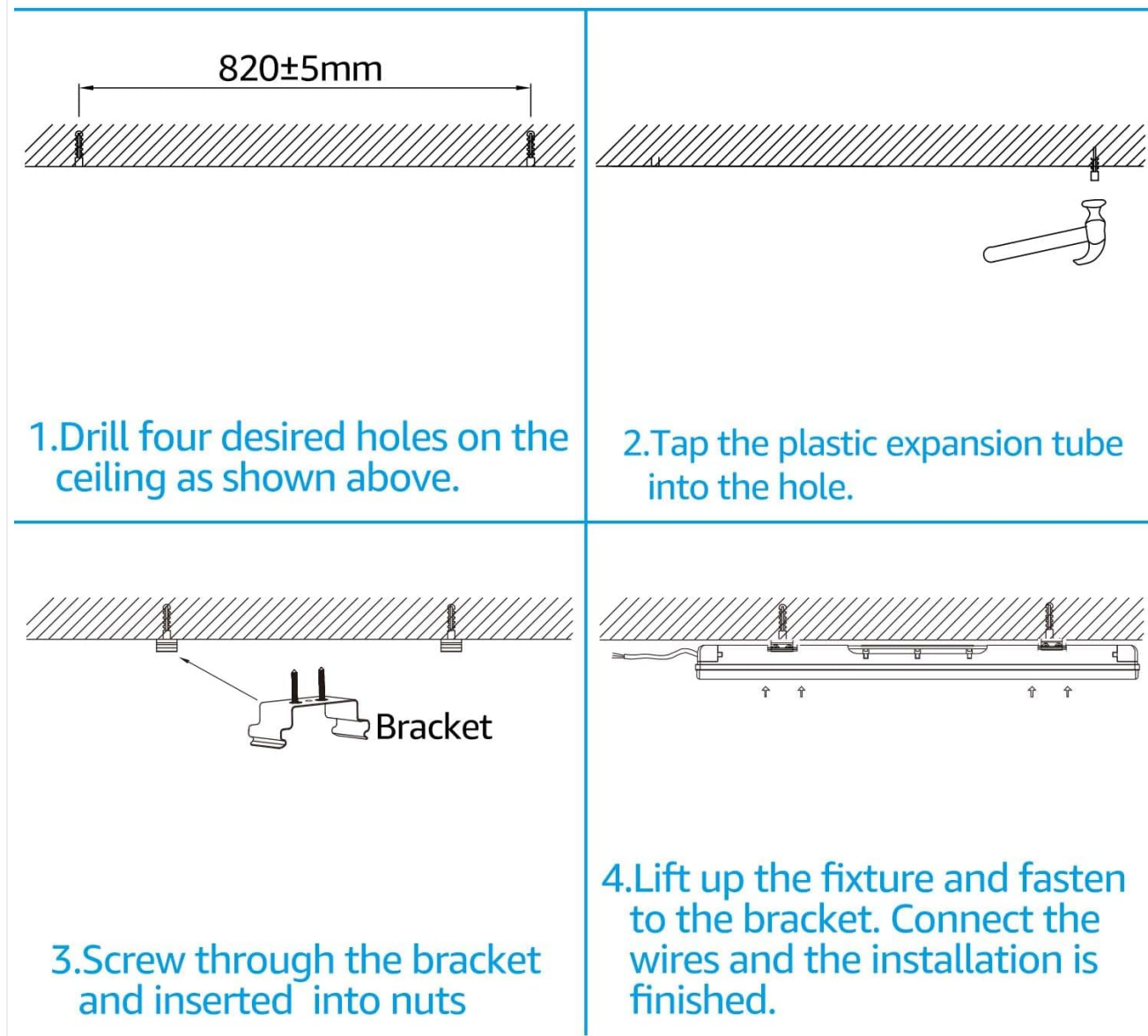


Image 5.1: Step-by-step visual guide for mounting the fixture.

5.2 Electrical Connections

This fixture supports 0-10V dimming. Connect the appropriate wires from your power supply and 0-10V dimmer (if used) to the fixture's wiring. Consult a qualified electrician if you are unsure about wiring procedures.

- **Live (Black):** Connect to the main power supply's live wire.
- **Neutral (White):** Connect to the main power supply's neutral wire.
- **Ground (Green/Yellow):** Connect to the main power supply's ground wire.
- **Dim+ (Purple):** Connect to the positive output of the 0-10V dimmer.
- **Dim- (Gray):** Connect to the negative output of the 0-10V dimmer.

Maximum Number of Connections:

- At 120V AC: Up to 5 units can be connected in series.
- At 277V AC: Up to 12 units can be connected in series.

MAXIMUM NUMBER OF CONNECTIONS

40W: 5 units (120V AC), 12units (277AC)



Image 5.2: Guidelines for connecting multiple fixtures in a series.



Image 5.3: Detailed view of the mounting bracket and waterproof cable gland.

6. OPERATING INSTRUCTIONS

Once properly installed and wired, the LEONLITE 4FT LED Vapor Tight Light Fixture is ready for operation.

- **Power On/Off:** Turn on the power at the circuit breaker or wall switch to illuminate the fixture. Turn off to extinguish.
- **Dimming Function:** If connected to a compatible 0-10V dimmer (not included), adjust the dimmer control to achieve the desired light output level. The fixture will respond to the 0-10V signal, allowing for smooth brightness adjustments.

7. MAINTENANCE

The LEONLITE LED Vapor Tight Light Fixture is designed for minimal maintenance. However, periodic cleaning and inspection are recommended to ensure optimal performance and longevity.

- **Cleaning:** Disconnect power before cleaning. Use a soft, damp cloth to wipe the exterior of the fixture. Avoid abrasive cleaners or solvents that may damage the polycarbonate housing. The IP65 rating allows for easy cleaning with water, but ensure no water enters the electrical connections.
- **Inspection:** Periodically inspect the fixture for any signs of damage, loose connections, or wear. If any issues are

found, disconnect power and consult a qualified technician.

- **No User-Serviceable Parts:** The LED light source is integrated and not user-replaceable. Do not attempt to open or repair the fixture yourself.

8. TROUBLESHOOTING

If you experience issues with your fixture, refer to the following common problems and solutions:

Problem	Possible Cause	Solution
Fixture does not light up	No power supply; Loose wiring; Faulty circuit breaker/switch	Check power supply; Verify all wiring connections; Reset circuit breaker or test switch
Light flickers or dims unexpectedly	Unstable power supply; Loose wiring; Incompatible dimmer (if used)	Check power source stability; Inspect wiring; Ensure dimmer is 0-10V compatible
Dimming function not working	Dimmer not connected; Incorrect dimmer wiring; Incompatible dimmer	Verify dimmer connections (Purple/Gray wires); Check dimmer compatibility; Ensure dimmer is functional
Reduced light output	Dust/dirt on fixture; Dimmer set too low	Clean the fixture exterior; Adjust dimmer to maximum brightness

If the problem persists after attempting these solutions, please contact customer support.

9. WARRANTY AND SUPPORT

9.1 Warranty

This LEONLITE product is covered by a **3-year warranty** from the date of purchase. This warranty covers defects in materials and workmanship under normal use. It does not cover damage resulting from improper installation, accident, misuse, abuse, or unauthorized modifications.

9.2 Customer Support

For technical assistance, warranty claims, or any questions regarding your LEONLITE product, please contact our customer support team. Please have your model number (ST7VPF-4P70W50) and purchase information ready when contacting support.

Contact Information:

- Website: www.leonlite.com (for general inquiries and product information)
- Email: Refer to your product packaging or the official LEONLITE website for the most current support email address.