

## Proster TOPPST180

# Proster TOPPST180 Sighting Compass with Clinometer User Manual

**Brand:** Proster | **Model:** TOPPST180

## 1. INTRODUCTION

This manual provides comprehensive instructions for the Proster TOPPST180 Sighting Compass with Clinometer. Designed for precision and durability, this instrument is suitable for various outdoor activities including hiking, camping, mountaineering, and boating. Please read this manual thoroughly to understand the features and proper operation of your compass.

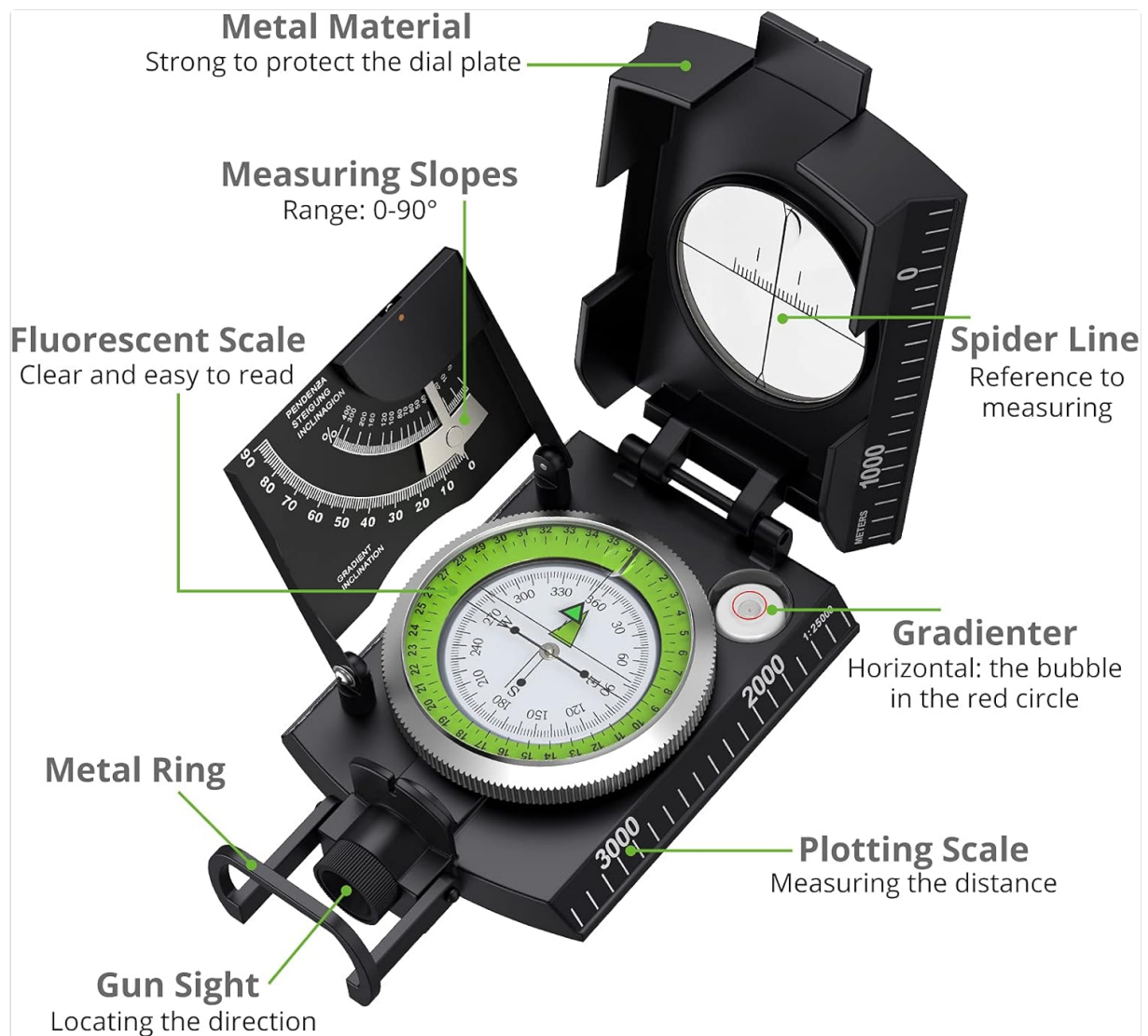


**Figure 1.1:** The Proster TOPPST180 Sighting Compass in its open configuration, showcasing the main dial, sighting optic, and clinometer.

## 2. PRODUCT FEATURES

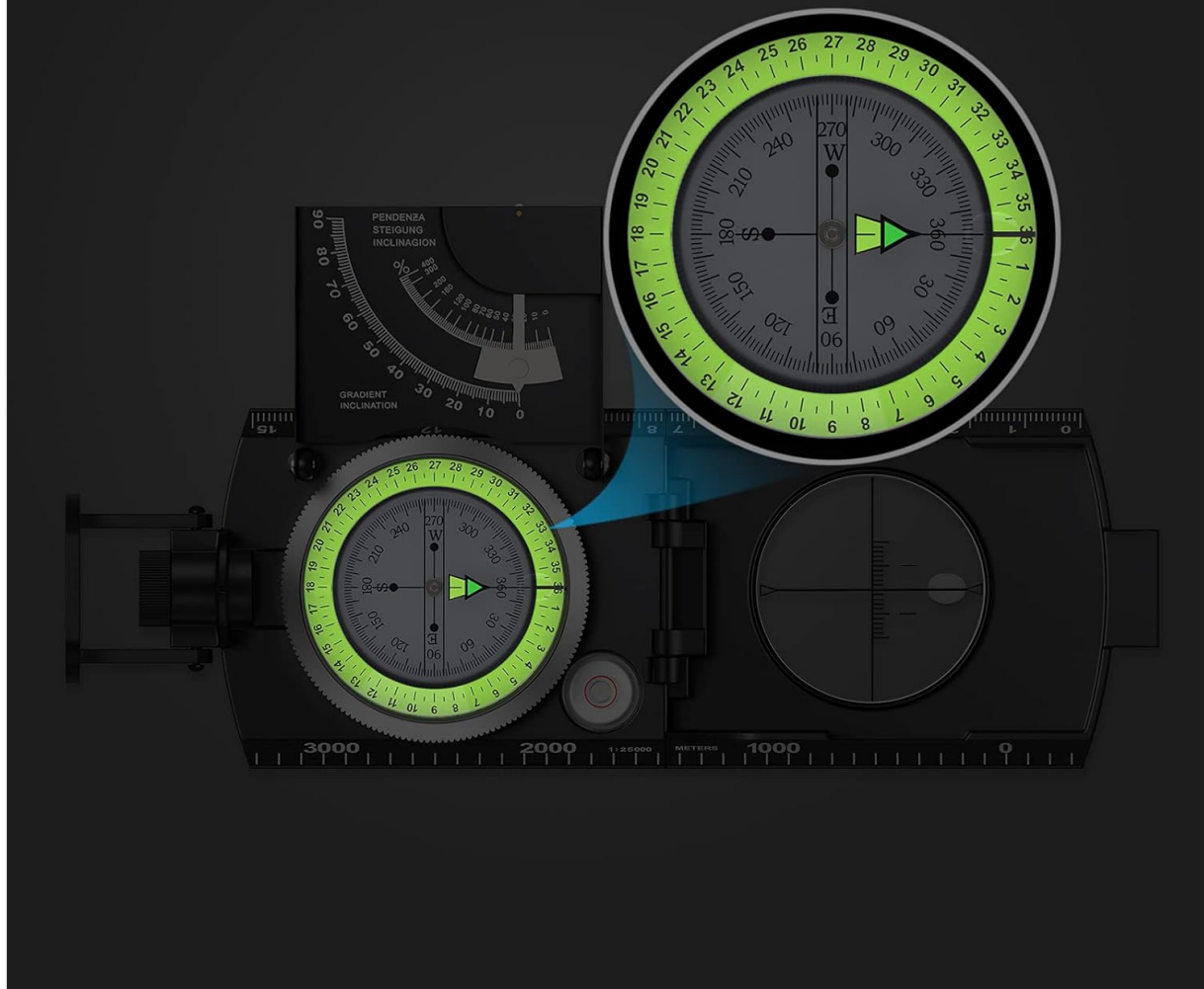
- **True Sighting Optic:** Allows for direct reading of the internal compass card, housed within a fluid-filled capsule.
- **Vertical Lubber Line:** Enhances accuracy with a 1-degree resolution on the compass card.
- **Integrated Clinometer:** Enables measurement of height differences and slopes (range 0-90°).
- **Fluorescent Scale:** Luminous magnet arrow and compass card provide readability in dark environments after absorbing sufficient light.
- **Durable Construction:** Features a foldable metal lid and is constructed from high-strength engineering metals.
- **Precision Dial:** Floating compass dial with a 360° scale and adjustable prism lens.
- **Waterproof Design:** IP65 rated, suitable for use in rainy conditions (not designed for submersion).

- **Graduated Scales:** Includes centimeter and plotting scales for distance measurement.



**Figure 2.1:** An annotated diagram highlighting key features such as the metal material, measuring slopes, fluorescent scale, spider line, gradiometer, metal ring, plotting scale, and gun sight.

# Fluorescent Light Design



**Figure 2.2:** Illustration of the fluorescent light design, showing the luminous compass dial for visibility in low-light conditions.





Mountaineering



Outdoor Activities



Exploration



Camping



## Waterproof IP65:

Can be used when it rains,  
but cannot be soaked in water.



**Figure 2.3:** Visual representation of the compass's IP65 waterproof rating, indicating its resistance to rain and splashes.

### 3. PACKAGE CONTENTS

Verify that all items are present in the package:

- 1 x Proster Metal Sighting Compass (Model: TOPPST180)
- 1 x Carry Bag
- 1 x User Manual (this document)
- 1 x Lanyard



Figure 3.1: The complete package contents, including the compass, carry bag, user manual, and lanyard.

## 4. SETUP

1. **Unpacking:** Carefully remove the compass and all accessories from the packaging.
2. **Lanyard Attachment:** Attach the included lanyard to the designated loop on the compass for secure carrying.
3. **Initial Inspection:** Check the compass for any visible damage. Ensure the dial rotates freely and the fluid capsule is clear.

## 5. OPERATING INSTRUCTIONS

### 5.1 Basic Compass Use

1. **Holding the Compass:** Hold the compass level and steady, away from any magnetic objects (e.g., phones, metal tools).
2. **Orienting the Compass:** Allow the magnetic needle to settle. The red end of the needle typically points North. Rotate the compass body until the 'N' on the dial aligns with the North-pointing needle.
3. **Reading Bearings:** Once oriented, the degree markings on the dial indicate the direction relative to North.

### 5.2 Sighting Optic Operation

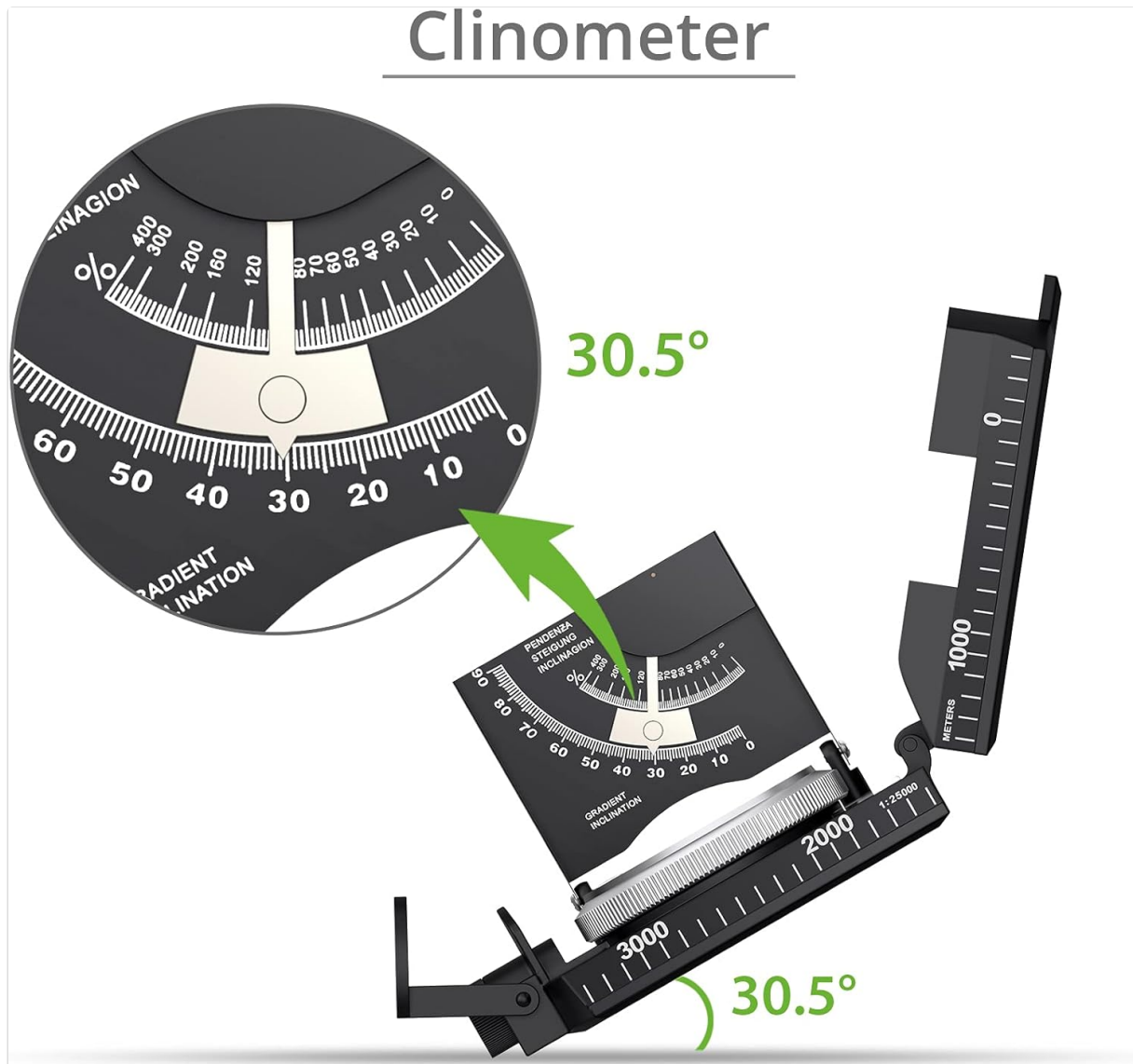
The sighting optic allows for precise bearing acquisition:

1. Open the compass fully.
2. Look through the sighting window and align the sighting line with your target.
3. Simultaneously, observe the internal compass card through the prism lens. The vertical lubber line will indicate the precise bearing to your target.

### 5.3 Clinometer Function

The clinometer measures angles of inclination or declination:

1. Hold the compass on its side, aligning the base with the slope or object you wish to measure.
2. Read the angle indicated by the clinometer needle on the dedicated scale.



**Figure 5.1:** Demonstrates how to use the clinometer to measure an angle, showing a reading of 30.5 degrees.

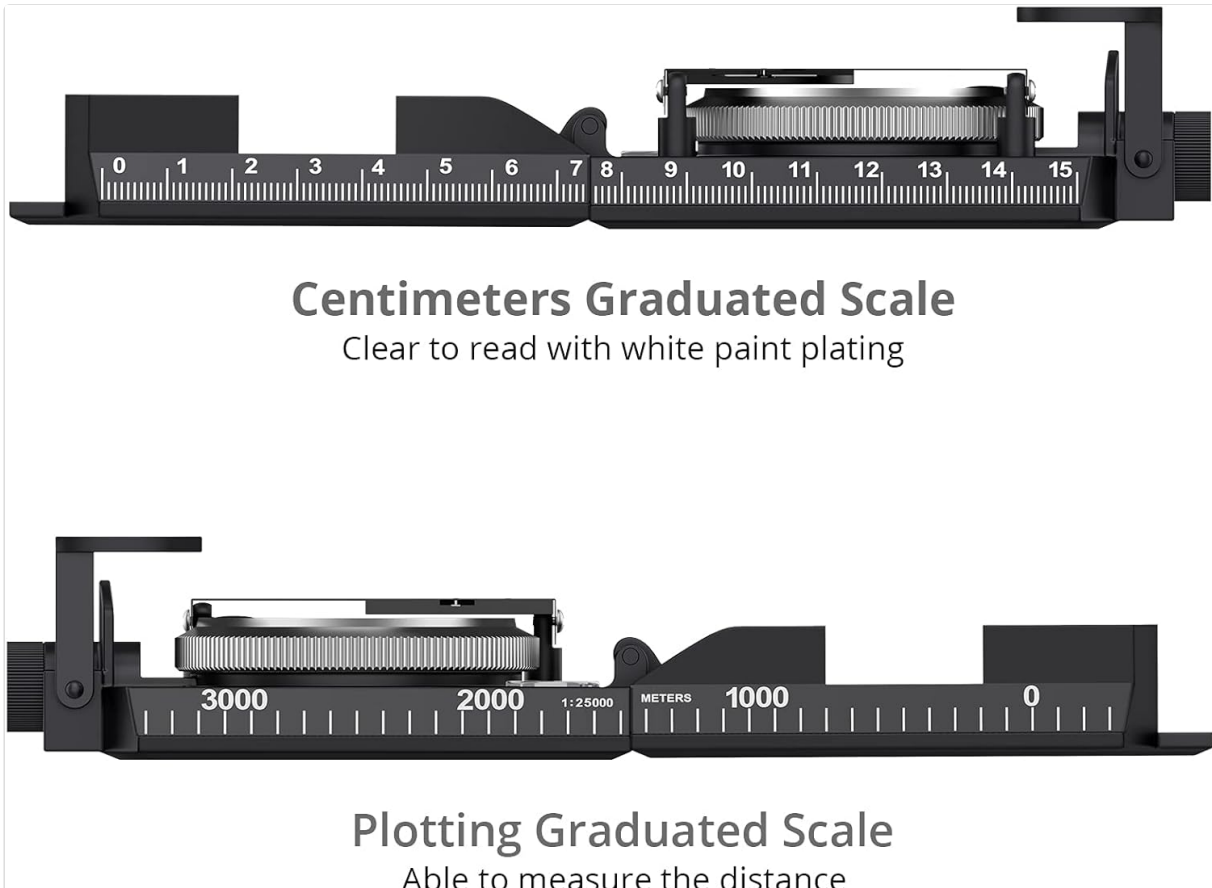
### 5.4 Fluorescent Scale Use

For use in low-light conditions, expose the compass to a light source (e.g., sunlight, flashlight) for a few minutes. The luminous markings on the magnet arrow and compass card will glow, allowing for visibility in the dark.

### 5.5 Plotting and Centimeter Scales

The compass features graduated scales along its edges for map work:

- **Centimeter Scale:** Use for direct measurements in centimeters.
- **Plotting Scale:** Designed for measuring distances on maps with specific scales (e.g., 1:25000).



**Figure 5.2:** Displays the centimeter graduated scale for direct measurement and the plotting graduated scale for map distance calculations.

## 6. MAINTENANCE

- **Cleaning:** Wipe the compass with a soft, dry cloth to remove dust and dirt. For stubborn marks, use a slightly damp cloth and dry thoroughly. Avoid abrasive cleaners or solvents.
- **Storage:** Store the compass in its protective carry bag when not in use. Keep it in a cool, dry place, away from direct sunlight and strong magnetic fields.
- **Avoid Impacts:** While durable, avoid dropping or subjecting the compass to severe impacts, which could affect its calibration and functionality.

## 7. TROUBLESHOOTING

### 7.1 Compass Pointer Disturbance

If the compass pointer appears erratic or does not settle correctly, it is likely being affected by a magnetic field.

- **Solution:** Move away from any potential sources of magnetic interference, such as electronic devices (mobile phones, GPS units), large metal objects, power lines, or magnetic rocks. The compass should be used in an area free from such disturbances for accurate readings.

## 8. SPECIFICATIONS



Specification	Value
Model Number	TOPPST180
Material	High-strength Engineering Metals
Color	Black
Item Dimensions (LxWxH)	4.33 x 3.15 x 0.04 inches
Package Dimensions (LxWxH)	5.24 x 2.36 x 1.5 inches
Package Weight	0.14 Kilograms
Minimum Score Value	1°
Working Temperature	-20°C to +50°C
Waterproof Rating	IP65 (Rain/Splash resistant, not for submersion)
Special Features	Adjustable, Foldable, Waterproof, Fluorescent Scale, Clinometer
UPC	610877355679

## 9. SAFETY INFORMATION

To ensure accurate readings and proper functioning of your compass, observe the following safety guidelines:

- **Magnetic Fields:** Keep the compass away from strong magnetic fields. Proximity to electronic devices, large metal objects, or certain types of rocks can disturb the magnetic needle and lead to inaccurate readings.
- **Temperature Extremes:** While designed for a wide temperature range, avoid prolonged exposure to extreme heat or cold beyond the specified operating temperatures to prevent damage to the fluid or internal components.
- **Water Exposure:** The compass is IP65 rated for water resistance, meaning it can withstand rain and splashes. However, it is not designed to be submerged in water. Avoid prolonged immersion.

## 10. WARRANTY AND SUPPORT

For warranty information, product support, or inquiries, please contact the manufacturer directly:

- **Manufacturer/Importer:** HongKong Proster Trading Limited
- **Address:** 9/F Silver Tower 707 Nathan RD, MONGKOK, KL,999077,HK
- **Email:** [prosterservice@outlook.com](mailto:prosterservice@outlook.com)

Please retain your proof of purchase for any warranty claims.