

Manuals+

[Q & A](#) | [Deep Search](#) | [Upload](#)

manuals.plus /

- › [Ganeed](#) /
- › [Ganeed 3-Light Branch Crystal Chandelier Instruction Manual](#)

Ganeed 1004-3C

Ganeed 3-Light Branch Crystal Chandelier Instruction Manual

Model: 1004-3C

INTRODUCTION

This instruction manual provides comprehensive guidance for the safe and effective installation, operation, and maintenance of your Ganeed 3-Light Branch Crystal Chandelier. Please read this manual thoroughly before beginning installation or use, and retain it for future reference.



Figure 1: Ganeed 3-Light Branch Crystal Chandelier (Chrome/3-light model)

SAFETY INFORMATION

To reduce the risk of electric shock, fire, or injury to persons, please adhere to the following safety precautions:

- Always turn off the main power at the circuit breaker or fuse box before beginning installation, cleaning, or maintenance.
- Consult a qualified electrician if you are unsure about the installation process or electrical wiring.
- Ensure all electrical connections are secure and comply with local codes and ordinances.
- This fixture is designed for **indoor use only**. Do not install in damp or wet locations.
- Use only bulbs of the specified type and wattage (E12 base, Max 25 Watts per bulb).
- Handle crystal components with care to prevent breakage or injury.
- Keep packaging materials away from children.

SETUP AND INSTALLATION

Assembly is required for this chandelier, including attaching the crystal strings to the fixture. While the process is designed to be straightforward, patience is recommended. All necessary mounting hardware and a detailed instructional manual are included in the package.

Included Components:

- Chandelier Frame (Chrome Finish)
- K9 Crystal Drops (various sizes)
- Steel Sling/Chain (adjustable length)
- Ceiling Canopy
- Mounting Hardware (screws, wire nuts, etc.)
- Extra replacement crystal pieces (large 2pcs, medium 4pcs, small 2pcs)



Figure 2: Key components including the metal ceiling canopy, stainless steel lamp body, transparent K9 crystals, and E12 bulb sockets.

Installation Steps:

1. **Prepare for Installation:** Turn off power at the circuit breaker. Ensure the mounting surface is secure and can support the weight of the fixture.

2. **Mount the Ceiling Canopy:** Attach the metal ceiling canopy to the junction box in your ceiling using the provided mounting hardware. Ensure it is securely fastened.

Variety Color Temperature Effect



3000K
Warm Light

4000K
Natural Light

6000K
Cold Light

Color temperature adjustment

3000K

4000K

6000K

This ceiling light is dimmable when used with compatible wall dimmer and dimmable light bulbs.
(Note: Dimmer switch and bulbs are NOT included.)

Figure 3: Detail of the durable stainless steel ceiling canopy.

3. **Wire the Fixture:** Connect the chandelier's electrical wires to your household wiring according to standard electrical codes. Typically, this involves connecting live to live, neutral to neutral, and ground to ground. If unsure, consult a qualified electrician.
4. **Attach the Chandelier Body:** Secure the chandelier body to the mounted ceiling canopy. The steel sling length is adjustable up to 39 inches to achieve your desired hanging height.
5. **Install Crystals:** Carefully attach the K9 crystal drops to the designated points on the chandelier frame. Refer to the included diagram for correct placement.
6. **Install Bulbs:** Insert three E12 base bulbs (not included) into the sockets.
7. **Restore Power:** Once all connections are secure and crystals are in place, restore power at the circuit breaker.

For a visual guide, please refer to the official installation video provided by Ganeed Lighting Store:

Your browser does not support the video tag.

Video 1: Installation guide for the Ganeed 3-Light Crystal Chandelier (Model 1004-3C).

Ceiling Compatibility:

This 3-light chandelier is suitable for installation on both flat and sloped ceilings. It is **not** compatible with vaulted ceilings.

Crystal Ceiling Light Details



Figure 4: Illustrates compatibility with flat and sloping ceilings, and incompatibility with vaulted ceilings.

OPERATING INSTRUCTIONS

Once installed, operating your Ganeed chandelier is simple. The fixture is controlled by your wall switch.

Bulb Requirements:

- Requires 3 x E12 base bulbs (US standard).
- Maximum wattage per bulb: 25 Watts.
- Compatible bulb types include Incandescent, LED, energy-saving, and halogen bulbs. LED bulbs are recommended for energy efficiency and longevity.
- Bulbs are not included with the chandelier.

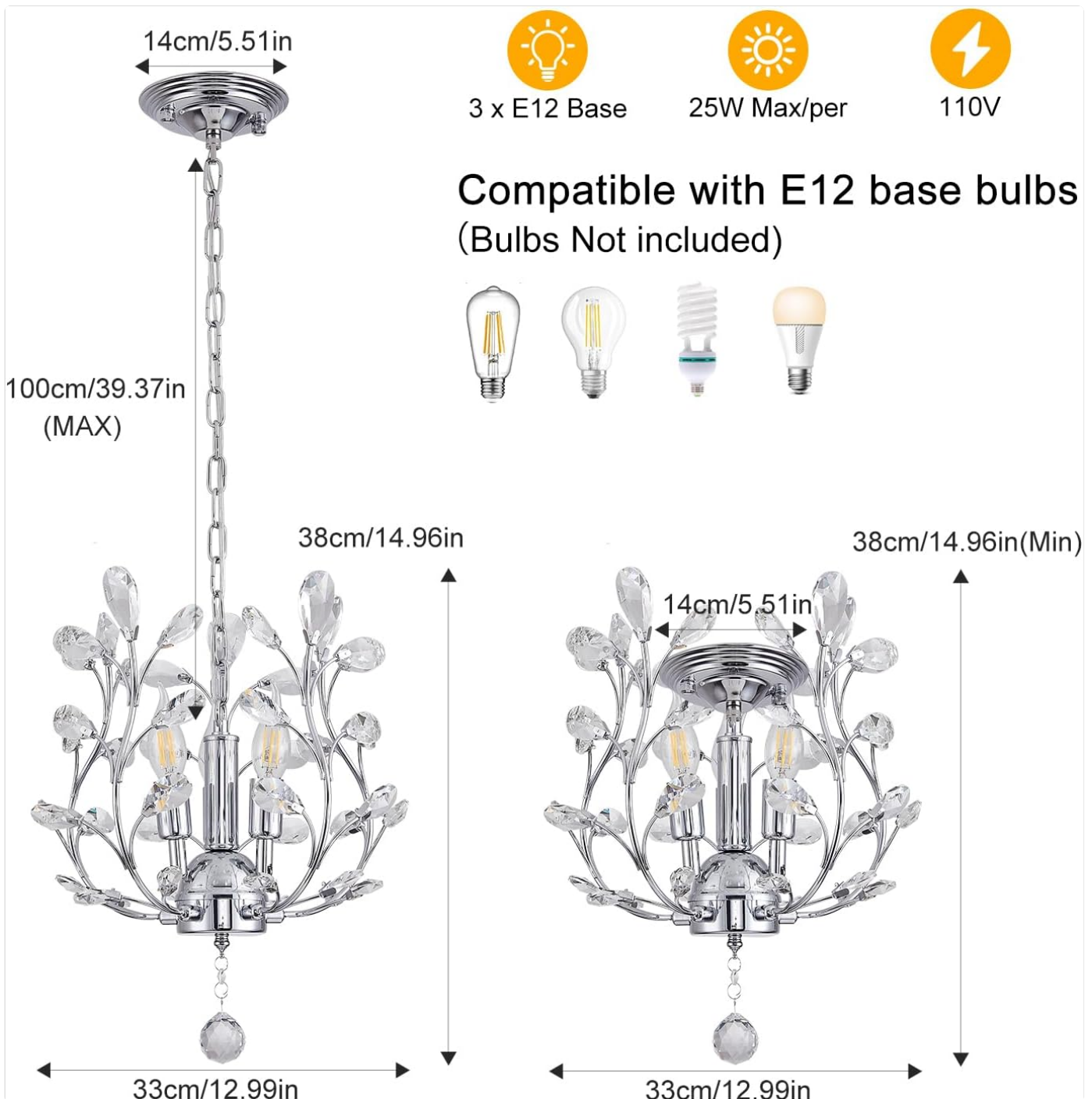


Figure 5: Shows the E12 bulb base and various compatible bulb types.

Dimmable Functionality:

The chandelier is dimmable when used with a compatible wall dimmer switch and dimmable light bulbs. Neither the dimmer switch nor dimmable bulbs are included.

Light Color Temperature:

The appearance of the chandelier's light can vary based on the color temperature of the bulbs used. Common options include:

- **3000K:** Warm Light, creating a cozy atmosphere.
- **4000K:** Natural Light, providing balanced illumination.
- **6000K:** Cold Light, offering bright, crisp illumination.

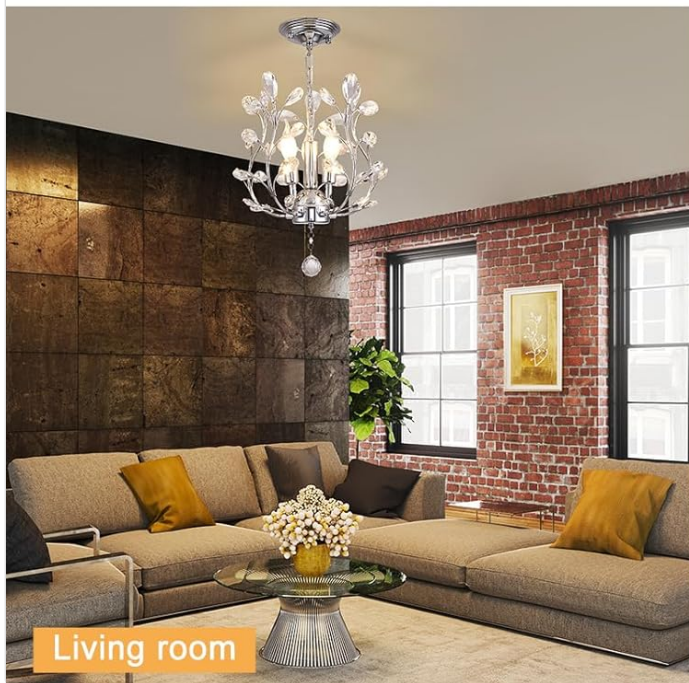
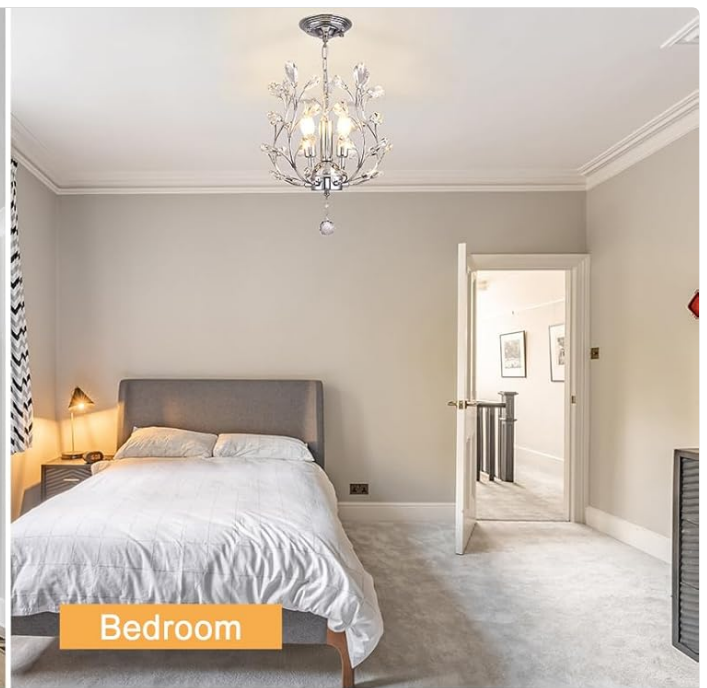
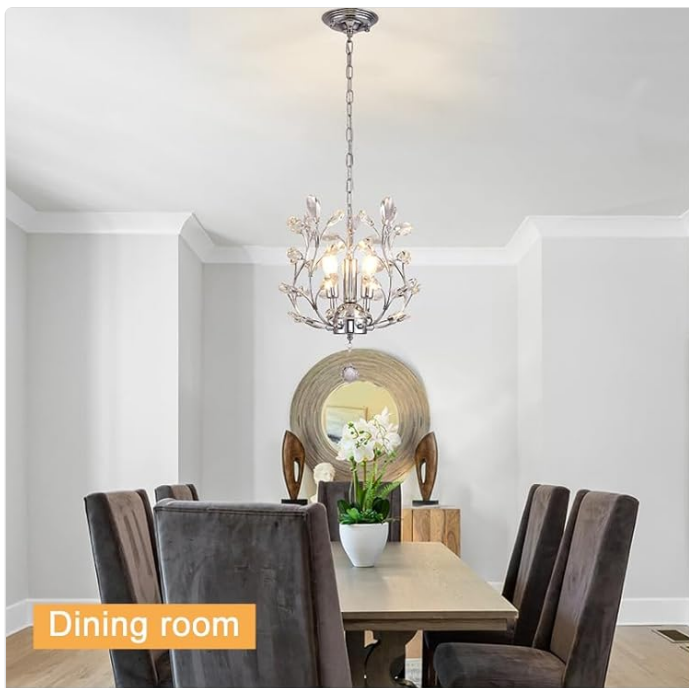


Figure 6: Visual representation of 3000K (Warm Light), 4000K (Natural Light), and 6000K (Cold Light) effects.



Figure 7: Comparison of the chandelier's appearance during daytime (off) and nighttime (on).

MAINTENANCE

Regular maintenance will help preserve the beauty and functionality of your Ganeed Crystal Chandelier.

- **Cleaning:** Turn off power before cleaning. Use a soft, dry, or slightly damp cloth to wipe the metal frame. For the K9 crystals, a soft, lint-free cloth dampened with a mild glass cleaner can be used. Avoid abrasive cleaners or harsh chemicals.
- **Crystal Care:** The chandelier features high-quality K9 crystals. Extra replacement crystal pieces (large 2pcs, medium 4pcs, small 2pcs) are included in your package for convenience in case of damage.
- **Bulb Replacement:** Always turn off power before replacing bulbs. Allow old bulbs to cool completely before removal.

TROUBLESHOOTING

If you encounter issues with your chandelier, refer to the following common troubleshooting steps:

Problem	Possible Cause	Solution
Light does not turn on.	Power is off at the switch or breaker. Loose wire connections. Bulbs are faulty or not installed correctly.	Check wall switch and circuit breaker. Turn off power, then check and secure all wire connections. Replace bulbs or ensure they are screwed in firmly.
Lights flicker.	Loose bulb. Incompatible dimmer switch or bulbs. Loose wiring.	Tighten bulbs. Ensure dimmer and bulbs are compatible (if using dimmable setup). Turn off power, then check and secure all wire connections.
Fixture appears unstable.	Improperly secured mounting.	Turn off power, then re-check and tighten all mounting hardware.
Burning smell or smoke.	Electrical issue (e.g., faulty wiring, short circuit).	Immediately turn off power at the circuit breaker. Do not attempt to fix yourself. Contact a qualified electrician.

SPECIFICATIONS

Brand	Ganeed
Model Number	1004-3C
Color	Chrome/3-light
Material	Crystal + Iron
Style	Modern & Vintage & Luxury
Light Fixture Form	Chandelier
Product Dimensions	13"L x 13"W x 14.96"H
Item Weight	6.6 pounds
Specific Uses	Indoor use only
Power Source	Corded Electric
Installation Type	Flush Mount (with adjustable chain)
Light Source Type	LED (compatible with Incandescent/Halogen/Energy Saving)
Number of Light Sources	3
Voltage	120 Volts (AC)
Max Wattage	25 Watts per bulb (75 watts total)
Bulb Base	E12
Assembly Required	Yes

WARRANTY AND SUPPORT

Your Ganeed 3-Light Branch Crystal Chandelier comes with a limited warranty. For specific details regarding warranty coverage, please refer to the documentation included with your purchase or contact Ganeed customer service.

Customer Support:

Ganeed Lighting Store is committed to providing excellent customer service. If you have any questions, require assistance with installation, or need to report a damaged component, please do not hesitate to contact us. Our customer service team is available to assist you.

- **Contact Information:** Refer to your purchase documentation or the Ganeed Lighting Store on Amazon for contact details.
- **Replacement Parts:** As noted, extra crystal pieces are provided. For other replacement parts or assistance, please reach out to customer support.