

CLE CCC Cream

CLE Cosmetics CCC Cream SPF 50 Instruction Manual

Model: CCC Cream

1. PRODUCT OVERVIEW

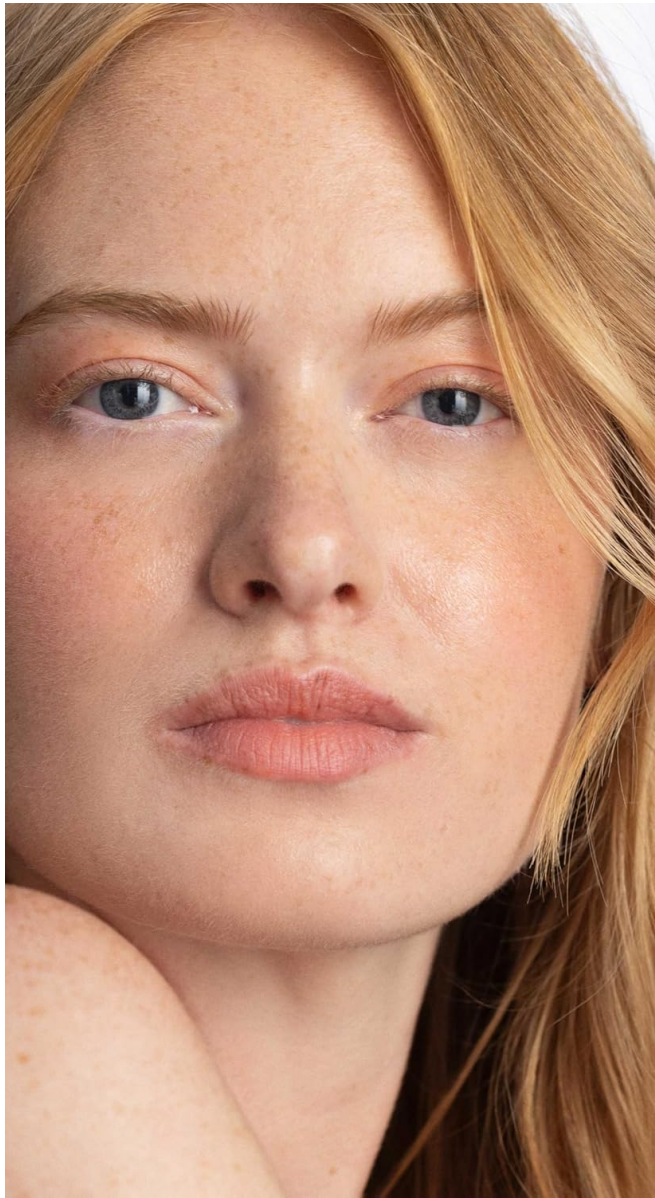
The CLE Cosmetics CCC Cream is a multi-functional beauty product designed to serve as a face primer, lightweight makeup base, and hydrating cream foundation. It is a hybrid of CC (Color Control) and BB (Blemish Balm) creams, offering light to medium coverage with SPF 50 sun protection.



Image 1: The CLE Cosmetics CCC Cream tube, showcasing the product and a swatch of its texture and color.

Key Features:

- **Multi-functional:** Acts as a primer, makeup base, and hydrating foundation.
- **SPF 50:** Provides broad-spectrum sun protection.
- **Color Correcting:** Utilizes Micro Capsules Technology to adjust to your skin tone upon blending.
- **Coverage:** Offers buildable light to medium coverage.
- **Finish:** Delivers a satiny, flawless finish without a dry or cakey appearance.
- **Lightweight:** Comfortable for all-day wear.
- **Skin-loving Ingredients:** Formulated with Niacinamide, Blueberry Fruit Extract, and Hydrolyzed Hyaluronic Acid for moisturizing and brightening benefits.
- **Conscious Formulation:** Cruelty-free, vegan, paraben-free, and free from synthetic fragrances.



CCC Cream **BENEFITS**



SPF 50



SATIN + DEWY
FINISH



HYALURONIC ACID



BB + CC CREAM
COMBINED



MICRO CAPSULE
TECHNOLOGY

Image 2: An infographic detailing the benefits of the CCC Cream, such as SPF 50, a satin and dewy finish, inclusion of hyaluronic acid, its hybrid BB and CC cream nature, and Micro Capsule Technology.

Made Without!

- ✓ PARABEN-FREE
- ✓ PHTHALATE-FREE
- ✓ GLUTEN-FREE
- ✓ CRUELTY-FREE
- ✓ VEGAN



Image 3: An infographic highlighting that the CCC Cream is free from parabens, phthalates, gluten, and is cruelty-free and vegan.

2. USAGE INSTRUCTIONS

2.1. Basic Application

1. Apply a pea-sized amount of CCC Cream to cleansed and prepped skin.
2. Using your fingertips, blend the cream from the center of your face outward. The warmth from your fingers helps activate the Micro Capsules for optimal color adjustment.
3. Allow 15 minutes for the product to fully adapt to your skin tone and provide sun protection before sun exposure.

2.2. Achieving Different Finishes

- **Matte Finish:** Apply with a buffing brush and set with powder and/or a matte setting spray.
- **Satin Finish:** Apply with your fingertips. For a more sheer coverage, mix a drop of skincare oil with the cream foundation before application.
- **Glass Skin Finish:** Use a damp makeup sponge to apply. This method enhances a dewy, hydrated look.



Image 4: A visual comparison of skin before and after applying the CCC Cream, demonstrating its coverage and natural finish.

Video 1: Demonstration of applying CCC Cream for a dewy, moisturized complexion. This video illustrates the blending process and the resulting skin finish.

3. SHADE MATCHING

The CLE Cosmetics CCC Cream features Micro Capsules Technology, which allows the white cream to adapt and blend seamlessly with your natural skin tone upon application. This ensures a personalized match for a natural look.



Image 5: A comprehensive shade chart displaying different skin tones and the corresponding CCC Cream shades to help users find their best match.



Image 6: A visual guide demonstrating the color-changing effect of the CCC Cream, showing how the initial white cream blends into different skin tones.



Image 7: Swatches of various CCC Cream shades applied to different arm skin tones, illustrating the product's ability to adapt and match.

4. INGREDIENTS

The following is a list of ingredients found in CLE Cosmetics CCC Cream:

Active Ingredients:

- Titanium Dioxide 9.03% (Sunscreen)
- Octinoxate 7.00% (Sunscreen)
- Octisalate 3.00% (Sunscreen)

Inactive Ingredients:

Water, Cyclopentasiloxane, C12-15 Alkyl Benzoate, Cyclohexasiloxane, Butylene Glycol, Isoamyl P-methoxycinnamate, Cetyl Peg/ppg-10/1 Dimethicone, Niacinamide, Dicaprylyl Carbonate, Ceresin, Diisostearyl Malate, Sodium Chloride, Iron Oxides (ci 77492), Distearidimonium Hectorite, Sorbitan Sesquioleate, Synthetic Wax, Lauryl Peg-9 Polydimethylsiloxylethyl Dimethicone, Sorbitan Olivatate, Mica, Iron Oxides (ci 77491), Chlorphenesin, Dipropylene Glycol, Dimethicone, Polyester-1, Propylene Carbonate, 1,2-hexanediol, Hydroxyacetophenone, Iron Oxides (ci 77499), Vegetable Oil, Silica Dimethyl Silylate, Citrus Aurantium Bergamia (bergamot) Fruit Oil, Citrus Aurantium Dulcis (orange) Oil, Phenyl

Trimethicone, Dimethicone Crosspolymer, Adenosine, Cananga Odorata Flower Oil, Disodium Edta, Natto Gum, Saussurea Involucrata Extract, Vaccinium Angustifolium (blueberry) Fruit Extract, Cocos Nucifera (coconut) Oil, Tocopheryl Acetate, Hydrolyzed Hyaluronic Acid, Glycerin, Melissa Officinalis Leaf Extract, Chrysanthemum Indicum Flower Extract, Camellia Sinensis Leaf Extract, Rosmarinus Officinalis (rosemary) Leaf Extract, Aspalathus Linearis Leaf Extract, Thymus Vulgaris (thyme) Flower/leaf Extract, Jasminum Officinale (jasmine) Flower Water, Veronica Officinalis Extract, Malva Sylvestris (mallow) Extract, Achillea Millefolium Extract, Alchemilla Vulgaris Extract, Alcohol, Primula Veris Extract, Mentha Piperita (peppermint) Leaf Extract, Tocopherol.

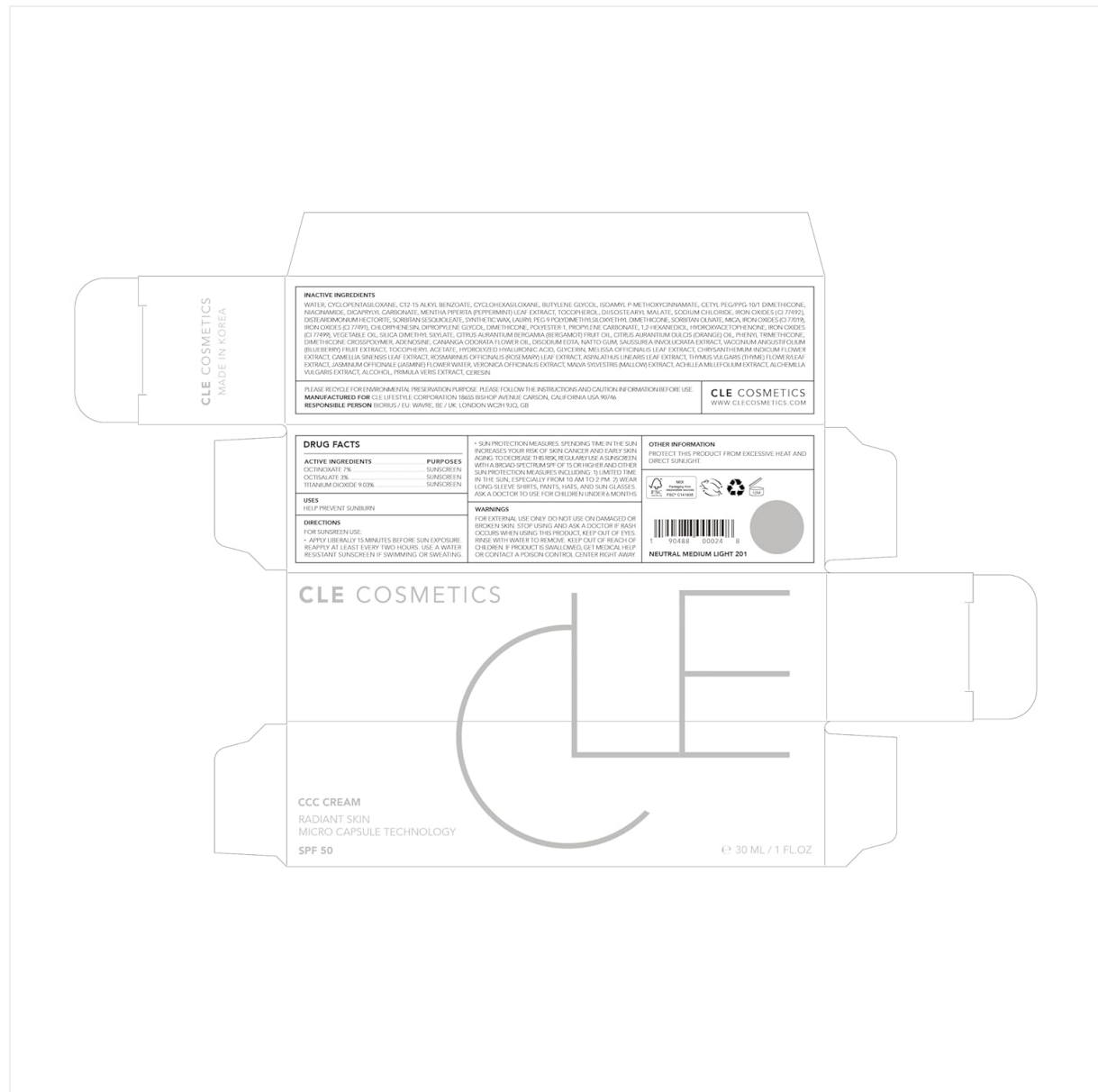


Image 8: The product packaging, detailing the drug facts, active ingredients, and full ingredient list.

5. SAFETY INFORMATION

- For external use only.
- Avoid contact with eyes. If contact occurs, rinse thoroughly with water.
- Keep away from naked flame or direct heat sources.
- Discontinue use if irritation or rash develops. Consult a doctor if irritation persists.
- Keep out of reach of children. If product is swallowed, seek medical help or contact a Poison Control Center right away.

6. SPECIFICATIONS

Attribute	Detail
Brand	CLE Cosmetics
Model	CCC Cream
Item Form	Cream
Skin Type	Normal
Recommended Uses	Hydrating, Face makeup, Sun Protection
Material Type Free	Paraben Free
Package Dimensions	5.08 x 1.42 x 1.34 inches; 1 ounces
UPC	190488000248

7. TROUBLESHOOTING

- **Product appears white:** The cream is designed to appear white initially and then adapt to your skin tone. Ensure thorough blending with fingertips to activate the color-changing micro capsules.
- **Uneven coverage:** Apply a pea-sized amount and blend evenly. For areas requiring more coverage, apply a second thin layer and blend.
- **Dry or cakey appearance:** Ensure your skin is well-hydrated before application. For a dewy finish, use a damp makeup sponge. Mixing with a drop of skincare oil can also help.
- **Skin irritation:** Discontinue use if irritation or rash occurs. Refer to the Safety Information section and consult a healthcare professional if symptoms persist.

8. SUPPORT

For further assistance or inquiries regarding your CLE Cosmetics CCC Cream, please visit the official CLE Cosmetics website or contact their customer support.
Official Website: www.clecosmetics.com