



[Manuals.plus](#) /

› [HDView](#) /

› HDView 4K 8MP PoE Dome IP Security Camera User Manual (Model 8595754691)

## HDView 8595754691

# HDView 4K 8MP PoE Dome IP Security Camera User Manual

MODEL: 8595754691



## 1. Introduction

---

This manual provides detailed instructions for the installation, operation, and maintenance of your HDView 4K 8MP PoE Dome IP Security Camera. Please read this manual thoroughly before using the product to ensure proper setup and functionality. Keep this manual for future reference.



Figure 1: HDView 4K 8MP PoE Dome IP Security Camera

The HDView 4K 8MP PoE Dome IP Security Camera is designed for both indoor and outdoor surveillance, offering high-resolution video capture and advanced features for comprehensive security monitoring.

## 2. Product Features

---

- **4K (8MP) Ultra HD Resolution:** Captures video at 3840 x 2160 pixels for clear and detailed images.
- **Power over Ethernet (PoE):** Simplifies installation by providing power and data connectivity through a single Ethernet cable.
- **IP66 Weatherproof Rating:** Ensures durability and reliable operation in various outdoor conditions.
- **Infrared Night Vision:** Equipped with infrared LEDs for clear surveillance in low-light or complete darkness, utilizing Night Color technology.
- **3.6mm Fixed Lens:** Provides a wide field of view suitable for general surveillance.
- **Advanced Video Compression (H.265/H.264):** Supports H.265 for efficient storage and bandwidth usage, reducing file sizes by approximately 50% compared to H.264 while maintaining quality.



Figure 2: Comparison of H.265 and H.264 Video Compression Efficiency

- **Intelligent Video Analytics (VCA):** Includes features like motion detection and object analysis for enhanced security monitoring.
- **Image Enhancement Technologies:** Features 3D Digital Noise Reduction (3D DNR), Digital Wide Dynamic Range (Digital WDR), Highlight Compensation (HLC), and Backlight Compensation (BLC) for optimized image quality in challenging lighting conditions.
- **Region of Interest (ROI) Coding:** Allows specific areas of the video feed to be encoded at higher quality, saving bandwidth for less critical areas.
- **SMT LED and Black Film IR Lamp:** Enhanced infrared performance for improved night vision and heat dissipation.



Figure 3: Advanced Infrared Lamp and LED Technology

### 3. Package Contents

Verify that all items are present in the package:

- HDView 4K 8MP PoE Dome IP Security Camera
- Mounting Hardware (screws, anchors)
- Quick Start Guide (this document)

### 4. Setup Guide

#### 4.1 Physical Installation

1. **Choose a Location:** Select a suitable indoor or outdoor location for surveillance. The camera is designed for

ceiling mount.

2. **Mount the Camera:** Use the provided mounting hardware to securely attach the camera to the chosen surface. Ensure the camera is positioned to cover the desired area.

## 4.2 Network Connection (PoE)

Connect an Ethernet cable from your PoE-enabled network switch or PoE injector to the camera's Ethernet port. This single cable will provide both power and network connectivity to the camera.

## 4.3 Remote Access Setup

To access the camera remotely, follow these steps:

1. **Install the Application:** Download and install the official HDView mobile application on your smartphone (iOS or Android).
2. **Scan QR Code:** Open the application and use the 'Scan QR Code' function to scan the unique QR code located on your camera or its packaging.
3. **View Camera:** Once the QR code is scanned and the camera is added, you can view the live feed and manage settings through the application.

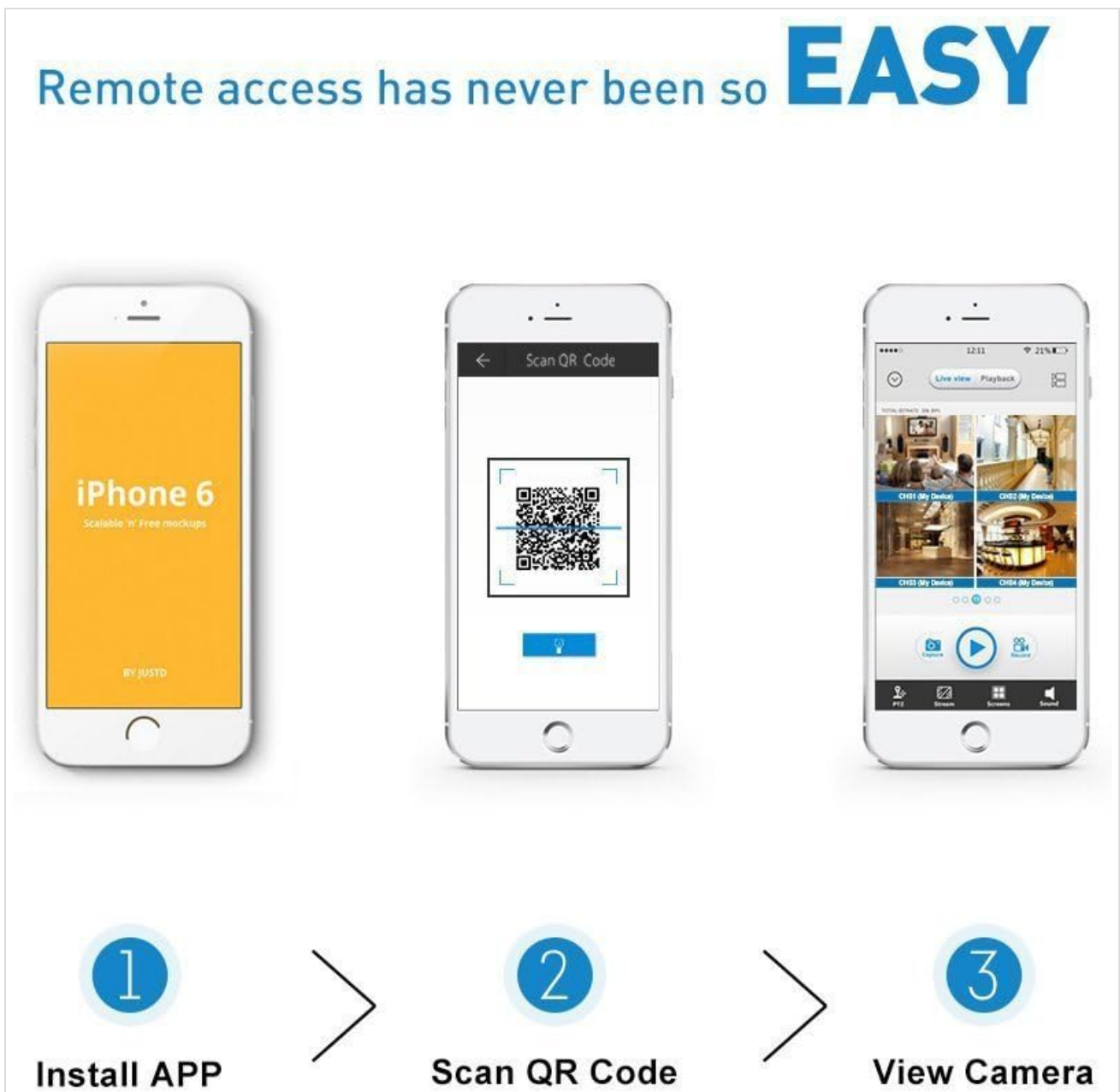


Figure 4: Steps for Remote Camera Access via Mobile Application

## 5. Operating Instructions

---

### 5.1 Accessing Live Feed

Access the live video feed through the mobile application or a compatible network video recorder (NVR) / PC software. Ensure your device is connected to the same network as the camera or has internet access for remote viewing.

### 5.2 Configuring Motion Detection

The camera supports motion-only alerts. Configure motion detection settings via the mobile application or NVR interface. You can define detection zones, sensitivity levels, and notification preferences.

### 5.3 Using Intelligent Analytics (VCA)

The camera features Video Content Analysis (VCA) for advanced monitoring. This includes capabilities such as object detection and human detection, which can trigger alerts or recordings based on specific events within the camera's field of view.



Figure 5: Example of Object Detection by VCA

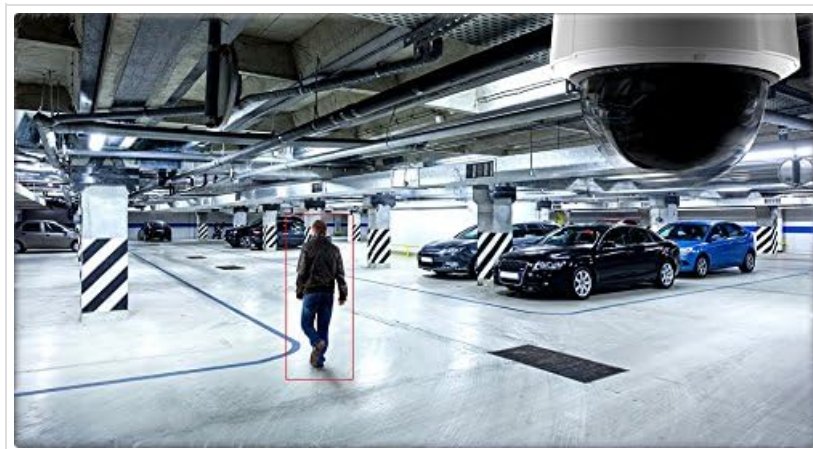


Figure 6: Example of Human Detection by VCA

### 5.4 Recording and Playback

Video footage can be recorded to a compatible NVR or local storage (if supported). Recordings are typically in MP4 format. Use the playback function in your NVR or mobile application to review recorded events.

## 5.5 Night Vision Operation

The camera automatically switches to infrared night vision mode in low-light conditions. Ensure the camera's view is not obstructed to maximize night vision effectiveness.

## 6. Maintenance

---

- **Cleaning:** Regularly clean the camera lens with a soft, dry cloth to ensure clear image quality. Avoid abrasive cleaners.
- **Firmware Updates:** Check the manufacturer's website or the mobile application periodically for firmware updates. Keeping the firmware updated ensures optimal performance and security.
- **Environmental Considerations:** While IP66 rated, avoid exposing the camera to extreme temperatures or direct high-pressure water jets.

## 7. Troubleshooting

---

- **No Power:** Ensure the Ethernet cable is securely connected to a PoE-enabled port or injector. Verify the PoE device is powered on.
- **No Video Feed:** Check network connectivity. Ensure the camera has an IP address and is accessible on the network. Verify firewall settings are not blocking communication.
- **Poor Image Quality:** Clean the camera lens. Check for obstructions in the field of view. Adjust camera settings (e.g., WDR, BLC) if lighting conditions are challenging.
- **Remote Access Issues:** Ensure your mobile device has internet access. Verify the camera is connected to the internet and its network settings allow remote access.
- **Motion Detection Not Working:** Check motion detection settings in the application/NVR. Ensure detection zones are correctly configured and sensitivity is appropriate.

## 8. Specifications

---

<b>Brand</b>	HDView
<b>Model Number</b>	8595754691
<b>Effective Still Resolution</b>	8 MP (4K)
<b>Video Capture Resolution</b>	4K
<b>Frame Rate</b>	15 fps, 30 fps
<b>Lens</b>	3.6mm
<b>Form Factor</b>	Dome
<b>International Protection Rating</b>	IP66
<b>Connectivity Technology</b>	Wired (PoE)
<b>Connectivity Protocol</b>	RTSP
<b>Power Source</b>	PoE (Power over Ethernet)

<b>Special Features</b>	Motion Sensor, Night Vision, Portable
<b>Low Light Technology</b>	Night Color
<b>Alert Type</b>	Motion Only
<b>Video Capture Format</b>	MP4
<b>Mounting Type</b>	Ceiling Mount
<b>Item Weight</b>	1.7 pounds
<b>UPC</b>	732773383591

## 9. Warranty and Support

---

For warranty information and technical support, please refer to the official HDView website or contact their customer service directly. Keep your purchase receipt as proof of purchase.

