

Uharbour EU-DPG61

Uharbour Digital Pressure Gauge User Manual

Model: EU-DPG61

INTRODUCTION

Thank you for choosing the Uharbour Digital Pressure Gauge. This manual provides essential information for the safe and effective use of your device. This digital pressure gauge is designed for high-precision measurement of gas and air pressure, offering reliability and durability for various applications.

SAFETY INFORMATION

- Always ensure the gauge is compatible with the pressure range of the system being measured.
- Do not expose the device to extreme temperatures or direct sunlight for prolonged periods.
- Avoid dropping the device or subjecting it to severe impacts, despite its shock-resistant design.
- Keep the device away from water or other liquids unless specifically designed for such environments.
- Do not attempt to disassemble or repair the device yourself. Refer to qualified personnel for service.
- Ensure proper ventilation when working with pressurized systems.

PRODUCT OVERVIEW

The Uharbour Digital Pressure Gauge features a clear digital display, intuitive controls, and a robust design for accurate pressure readings.



Figure 1: Front view of the Uharbour Digital Pressure Gauge, showing the digital display, 'ON' button, and 'FUNC' button, encased in a protective rubber boot.

Bright green backlight LCD

4 Units



0-15 Psi



0-1 Bar



0-100 Kpa



0-1 Kg/cm²

Batteries Status Display



Accuracy: $\pm 1\%$

Resolution: 0.5 psi

Figure 2: The bright green backlit LCD display showing various measurement units (Psi, Bar, Kpa, Kg/cm²), battery status, and indicating an accuracy of $\pm 1\%$ with a resolution of 0.5 psi.

Back batteries compartment

For 2 x AAA 1.5V

Easy to replace !

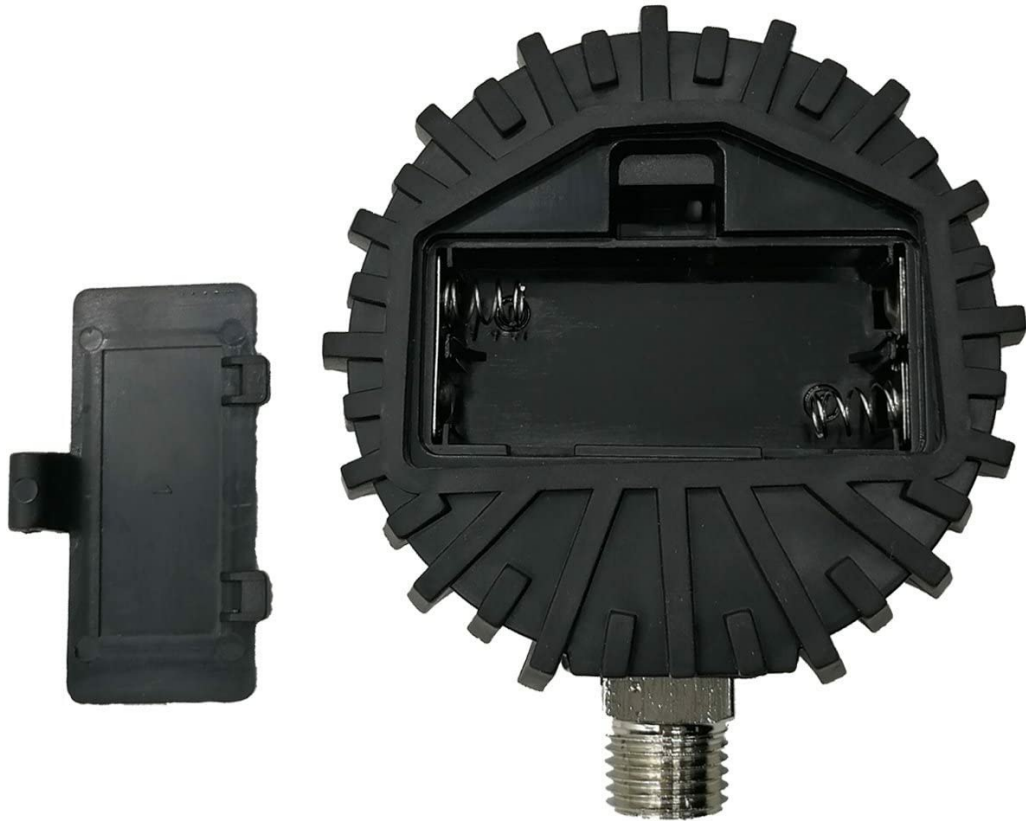


Figure 3: Rear view of the digital pressure gauge, illustrating the battery compartment designed for two AAA 1.5V batteries, highlighting its easy replacement feature.



**SOLID CONSTRUCTION
1/4" NPT THREAD**



Figure 4: Close-up view of the gauge's solid construction and the 1/4" NPT thread connector, designed for secure and reliable attachment to various systems.

SETUP

1. Battery Installation

1. Locate the battery compartment on the back of the gauge (refer to Figure 3).
2. Open the battery cover.
3. Insert two AAA 1.5V batteries, ensuring correct polarity (+/-).
4. Close the battery cover securely.

2. Connecting the Gauge

1. Ensure the system you are connecting to is depressurized or at a safe pressure level.
2. Carefully screw the 1/4" NPT connector of the gauge onto the corresponding port of your system.
3. Tighten by hand first, then use a wrench if necessary, but do not overtighten to avoid damage.

OPERATION

1. Turning On/Off

- To turn on the gauge, press the **ON** button. The display will light up.
- The gauge will automatically turn off after a period of inactivity to conserve battery life.

2. Changing Units

- With the gauge turned on, press the **FUNC** button repeatedly to cycle through the available measurement units: Psi, Bar, Kg/cm², and Kpa.
- The selected unit will be displayed on the screen.

3. Taking Measurements

- Once connected to a pressurized system and turned on, the gauge will display the current pressure reading in the selected unit.
- Allow a few seconds for the reading to stabilize for accurate measurement.



Figure 5: The Uharbour Digital Pressure Gauge connected to a tire inflation gun, demonstrating its suitability for accurate tire pressure measurement.

MAINTENANCE

1. Cleaning

- Wipe the gauge with a soft, dry cloth.
- Do not use abrasive cleaners or solvents, as they may damage the display or casing.

2. Battery Replacement

- When the battery indicator on the display shows low power, replace the batteries promptly.
- Follow the battery installation steps outlined in the Setup section.
- Dispose of used batteries according to local regulations.

TROUBLESHOOTING

No Display / Gauge Not Turning On

- Check if the batteries are installed correctly with the right polarity.
- Replace the batteries with new ones.

Inaccurate Readings

- Ensure the gauge is securely connected to the pressure source without leaks.
- Verify that the selected unit of measurement is appropriate for your application.
- Confirm the gauge's pressure range is suitable for the pressure being measured.

Gauge Error Message

- If an error message appears, disconnect the gauge, turn it off, and then turn it back on.
- If the error persists, contact customer support.

SPECIFICATIONS

Feature	Specification
Brand	Uharbour
Model Number	EU-DPG61
Product Dimensions (L x W x H)	8.38 x 6.86 x 3.56 cm
Item Dimensions (L x W x H)	8.4 x 6.9 x 3.6 centimeters
Weight	113.4 grams
Power Source	2 x AAA 1.5V Batteries (included)

Material	Plastic or aluminum
Screen Size	3 Inches
Accuracy	1% (at 25 °C)
Resolution	0.5 psi
Measurement Units	Psi, Bar, Kgf/cm ² , Kpa
Application	Gas and air pressure measurement, pressure vessels, office equipment, laboratory equipment, vehicle tires.

WARRANTY INFORMATION

Uharbour products are manufactured to high-quality standards. For specific warranty details, please refer to the product packaging or contact Uharbour customer support. Keep your purchase receipt as proof of purchase.

CUSTOMER SUPPORT

For any questions, technical assistance, or service inquiries regarding your Uharbour Digital Pressure Gauge, please contact Uharbour customer support through the retailer's platform or the official Uharbour website. Please have your model number (EU-DPG61) ready when contacting support.