



Manuals.plus /

› Zeee /

› Zeee 3S 5200mAh 11.1V 50C Lipo Battery Instruction Manual

Zeee SDL-9543125

Zeee 3S 5200mAh 11.1V 50C Lipo Battery Instruction Manual

MODEL: SDL-9543125

Brand: Zeee

Introduction

This manual provides essential information for the safe and effective use of your Zeee 3S 5200mAh 11.1V 50C Lipo Battery. Please read all instructions carefully before use to ensure optimal performance and safety. This battery is designed for various RC models including helicopters, airplanes, multirotors, boats, cars, and trucks.

Safety Warnings

Lithium Polymer (LiPo) batteries require careful handling. Failure to follow these safety guidelines can result in fire, personal injury, or property damage.

- Users must read the safety manual before using the battery.
- Use only a Lithium Polymer (LiPo) specific balance charger.
- The suggested charge rate is 0.5 - 1C. Do not exceed 5C fast charge capability.
- Never charge the battery unattended.
- Maintain ambient charging temperature between 41°F (5°C) and 95°F (35°C).
- Do not puncture, disassemble, short circuit, or expose the battery to extreme temperatures or direct sunlight.
- If the battery swells, leaks, or shows any signs of damage, discontinue use immediately and dispose of it properly.

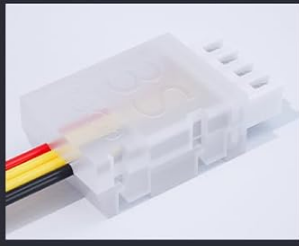
Product Overview



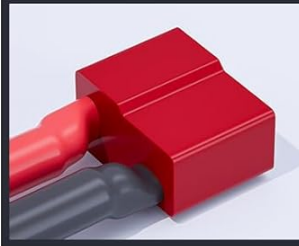
Product Details

Zee Lipo Battery, Upgraded Series for More Enjoyment

JST-XH



T Connector



Soft Case



12AWG

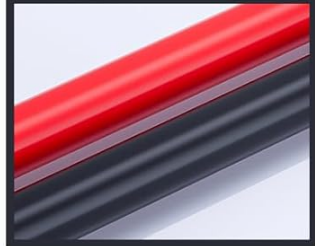


Image: Zee 3S 5200mAh Lipo Battery with Dimensions. This image displays the Zee 3S 5200mAh Lipo battery, highlighting its physical dimensions: 132mm (5.2in) length, 43mm (1.69in) width, and 25mm (0.98in) height. The battery features a 50C discharge rate, 11.1V voltage, and 3S1P configuration.

Zeee 11.1V 50C 5200mAh Lipo Battery

Specification

5200mAh

Battery Capacity

11.1V

Battery Voltage

50C

Continuous Rate

Deans T

Discharging Plug

JST-XH

Balance Connector

3S1P

Configuration

5.2*1.69*0.98in

132*43*25mm

Battery Dimension

343g/12.1oz

Battery Weight

LIPO
BATTERY

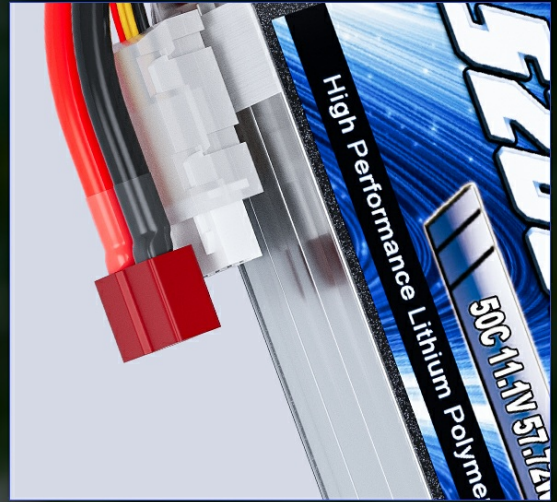


Image: Zeee Lipo Battery Product Details. This image details the key features of the Zeee Lipo battery, including the JST-XH balance connector, T-connector (Deans style), soft case design, and 12AWG wiring for efficient power transfer.

Key Features:

- **Battery Voltage:** 11.1V (3S1P Configuration)
- **Capacity:** 5200mAh
- **Discharge Rate:** 50C continuous
- **Connectors:** Soldered T Plug and XT60 Replacement Plug (not an adapter)
- **Dimensions:** 132mm x 43mm x 25mm (5.2 x 1.69 x 0.98 inches)
- **Weight:** Approximately 343g (12.1oz)
- **Construction:** Soft Case Lithium Polymer Battery

Application Compatibility:

This Zeee 3S 5200mAh Lipo battery is compatible with various RC models, including helicopters, airplanes, multirotors, boats, cars, and trucks. It is suitable for 1/10 scale vehicles or larger, such as Traxxas Slash VXL, Slash 4x4 VXL, E-Maxx Brushless, E-Revo Brushless, and Spartan models. Compatibility is ensured if the voltage, dimensions, and plug type match your specific RC model requirements.

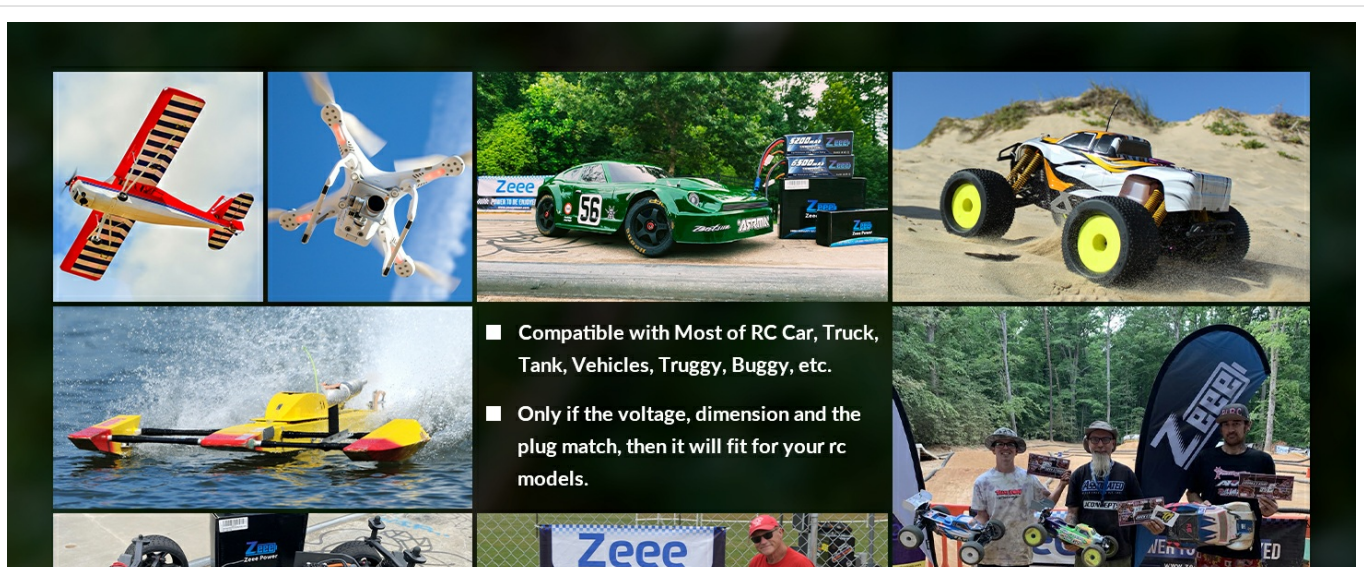


Image: Compatible RC Models. This image illustrates various RC models, including cars, planes, boats, and helicopters, demonstrating the wide range of applications for Zeee Lipo batteries. Ensure voltage, dimensions, and plug match your model.

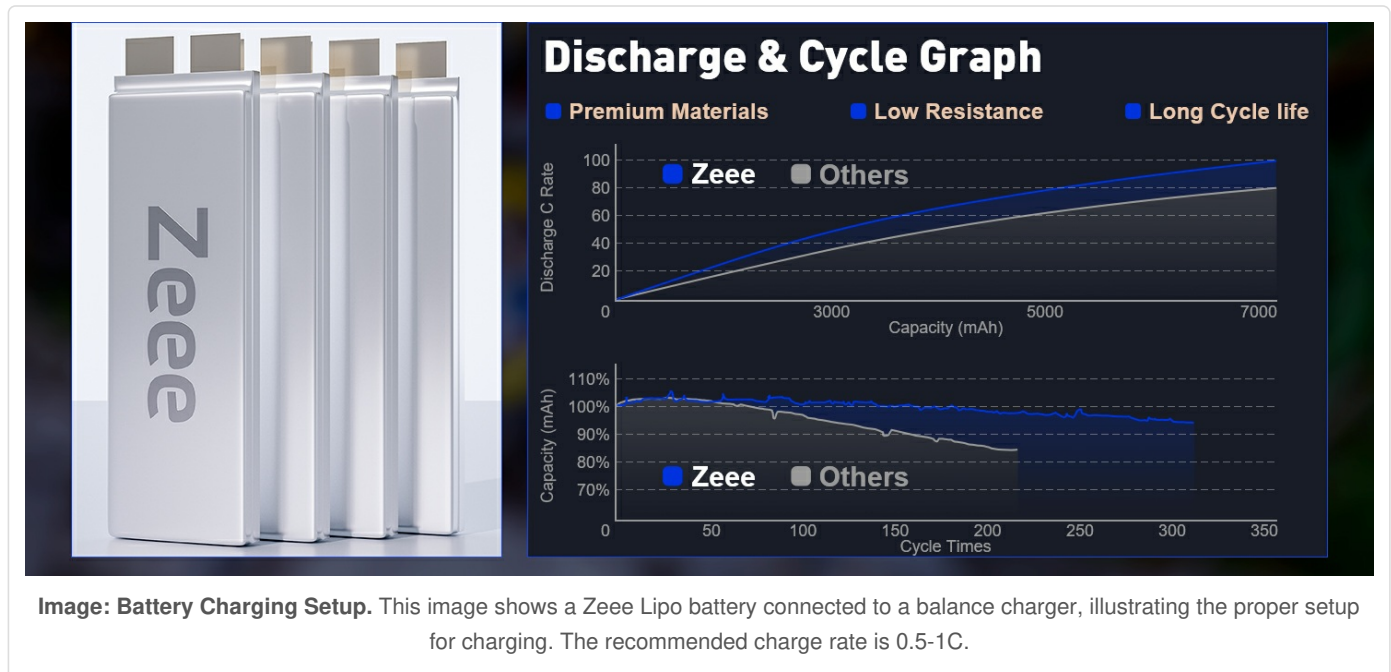
Setup and Charging

Choosing a Charger:

- The charger must have a balance charging function.
- The charger must support 3S battery charging (11.1V nominal, 12.6V fully charged).
- The recommended charging current for this battery is 2.6A to 5.2A. Ensure your charger supports this range.

Charging Process:

1. Connect the battery's main discharge plug (T Plug or XT60) to the charger's output.
2. Connect the battery's balance lead to the charger's balance port.
3. Select the LiPo balance charge program on your charger.
4. Set the correct cell count (3S) and charging current (0.5-1C, e.g., 2.6A to 5.2A for a 5200mAh battery).
5. Start the charging process and monitor the battery throughout. Never leave charging batteries unattended.



Operating Instructions

1. Ensure the battery is fully charged and balanced before use.
2. Securely install the battery in your RC model, ensuring it does not shift during operation.
3. Connect the battery's discharge plug to your RC model's ESC (Electronic Speed Controller).
4. Always monitor battery temperature during operation. If the battery becomes excessively hot, stop use immediately and allow it to cool.
5. Avoid over-discharging the battery. Most ESCs have a Low Voltage Cutoff (LVC) feature; ensure it is set correctly for 3S LiPo batteries.
6. After use, allow the battery to cool down before recharging or storing.

Maintenance and Storage

- **Storage Voltage:** For long-term storage, charge or discharge the battery to its storage voltage (typically 3.8V per cell).

- **Storage Environment:** Store batteries in a cool, dry place, away from direct sunlight, heat sources, and flammable materials. A LiPo-safe bag or container is recommended.
- **Regular Inspection:** Periodically inspect the battery for any signs of damage, swelling, or leaks. Do not use damaged batteries.
- **Disposal:** Dispose of damaged or old LiPo batteries responsibly at designated battery recycling centers. Never throw them in household trash.

Troubleshooting

Problem	Possible Cause	Solution
Battery not charging	Incorrect charger settings, faulty charger/battery, poor connection.	Verify charger settings (3S, LiPo mode, current). Check all connections. Try a different charger if available.
Battery swells or gets hot during charge/discharge	Overcharging, over-discharging, internal damage, excessive current draw.	Immediately disconnect the battery. Do not use. Dispose of safely. Ensure correct charger settings and appropriate LVC in your RC model.
Short run time	Battery degradation, high current draw from model, improper charging.	Ensure battery is fully balanced. Check for excessive load on your RC model. Consider battery age and cycle count.
Uneven cell voltage	Improper balance charging, damaged cell.	Always use a balance charger. If cells remain unbalanced after multiple balance charges, the battery may be damaged and should be replaced.

Specifications

Feature	Value
Battery Voltage	11.1V
Configuration	3S1P
Capacity	5200mAh
Discharge Rate	50C
Connectors	T Plug and XT60 Replacement Plug
Dimensions (L*W*H)	132 x 43 x 25 mm (5.2 x 1.69 x 0.98 inches)
Weight	343g (12.1oz)
Battery Cell Composition	Lithium Polymer
Recommended Uses	Remote Control Vehicles
Item Model Number	SDL-9543125

Warranty and Support

For any product-related issues or support, please contact Zeee customer service. You can reach us through the following methods:

- Access your order history and click the "Contact Seller" option.
- Visit our storefront and click "Ask a question."

We aim to respond to all inquiries within 24 hours.

Official Product Video

Video: Zeee Lipo Battery Overview. This video provides an overview of the Zeee Lipo Battery, showcasing its features and applications.
(Source: ZEEE POWER Direct)