

LDEXIN FA2-6/1BEK

LDEXIN FA2-6/1BEK DPST Hand Drill Trigger Switch User Manual

Model: FA2-6/1BEK | Brand: LDEXIN

1. INTRODUCTION

This manual provides essential information for the safe and effective use of your LDEXIN FA2-6/1BEK DPST Hand Drill Trigger Switch. This component is designed as a replacement part for electric hand drills and other power tools, offering variable speed control and a momentary contact lock function. Please read this manual thoroughly before installation and operation to ensure proper function and safety.

2. SAFETY INFORMATION

WARNING: Electrical components can cause serious injury or death. Always disconnect power before installation or maintenance.

- Ensure the power tool is unplugged from the power source before attempting any installation or replacement.
- Wear appropriate personal protective equipment (PPE), including safety glasses and gloves.
- If you are not confident in performing the installation, seek assistance from a qualified electrician or power tool technician.
- Do not use the switch if it appears damaged or if any wires are exposed.
- Ensure all connections are secure and properly insulated after installation.
- This switch is designed for specific electrical ratings (6A, 250V AC). Do not exceed these ratings.

3. PRODUCT OVERVIEW

The FA2-6/1BEK trigger switch is a crucial component for controlling the speed and operation of compatible electric hand drills. It features a durable plastic casing and integrates variable speed control electronics.



Figure 1: Front view of the FA2-6/1BEK trigger switch, showing the main trigger and speed control knob.

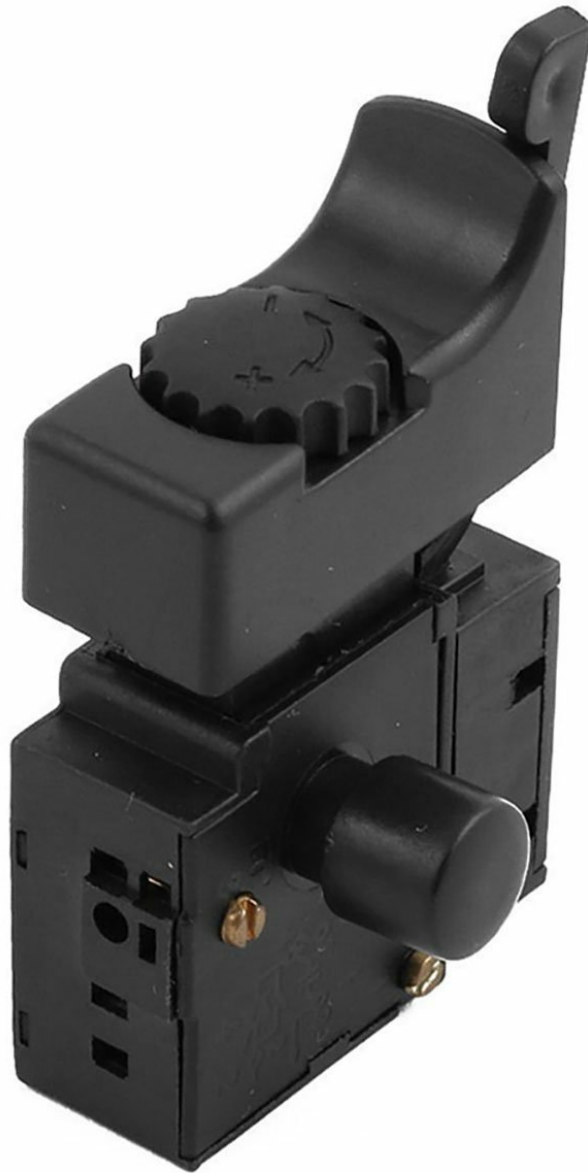


Figure 2: Side view of the FA2-6/1BEK trigger switch, highlighting the integrated reverse unit and terminal connections.

Key Features:

- Variable speed control electronics for precise operation.
- Momentary contact lock function for continuous operation.
- Optional integrated reverse unit for directional control.
- Integrated speed control knob for easy adjustment.
- Durable plastic casing.

4. SPECIFICATIONS

Attribute	Value
Manufacturer	LDEXIN
Model Number	FA2-6/1BEK

Attribute	Value
Operation Mode	Push Button
Current Rating	6 Amps
Operating Voltage	250 Volts AC
Contact Type	Normally Open
Connector Type	Screw Terminals
Switch Type	Push Button
Terminal Type	DPST (Double Pole Single Throw)
Material	Plastic, Metal
Electrical Circuit Type	2 Way
Approximate Dimensions	8.89 x 6.35 x 3.81 cm
Approximate Weight	45 grams

5. SETUP AND INSTALLATION

This trigger switch is designed for replacement in compatible electric hand drills. While installation is generally straightforward, it involves working with electrical components. Professional installation is recommended if you are unfamiliar with power tool repair.

Installation Steps:

- 1. Disconnect Power:** Ensure the power tool is completely unplugged from any power source.
- 2. Access the Old Switch:** Carefully open the casing of your power tool to access the existing trigger switch. This may require removing screws and separating housing halves.
- 3. Note Wire Connections:** Before disconnecting, take a clear photograph or draw a diagram of how the wires are connected to the old switch. This is crucial for correct re-connection.
- 4. Remove Old Switch:** Disconnect all wires from the old switch and remove it from its housing.
- 5. Install New Switch:** Place the new LDEXIN FA2-6/1BEK switch into the tool's housing.
- 6. Connect Wires:** Reconnect the wires to the new switch according to your diagram or photograph. Ensure all connections are tight and secure, utilizing the screw terminals.
- 7. Test Functionality (Unassembled):** Before fully reassembling, carefully plug in the tool (ensuring hands are clear of moving parts) and briefly test the switch's basic functionality (on/off, speed control). Unplug immediately after testing.
- 8. Reassemble Tool:** Carefully close and secure the power tool casing, ensuring no wires are pinched.
- 9. Final Test:** Plug in the tool and perform a full functional test in a safe environment.

6. OPERATING INSTRUCTIONS

Once installed, the FA2-6/1BEK trigger switch provides intuitive control over your power tool.

- **Power On/Off:** Press the main trigger button to activate the tool. Release the trigger to turn the tool off.
- **Variable Speed Control:** The trigger is pressure-sensitive. Pressing it lightly will result in lower speeds, while pressing it fully will achieve maximum speed.
- **Speed Control Knob:** Some models may feature an integrated speed control knob (refer to Figure 1). Rotate this knob to set a maximum speed limit for the trigger, allowing for more precise control at lower speeds.
- **Lock-On Function:** For continuous operation without holding the trigger, press the small lock button (if present) while the trigger is fully depressed. Release the trigger and then press it again briefly to disengage the lock.
- **Reverse Function:** If your switch includes an optional integrated reverse unit (refer to Figure 2), a small lever or button will be present near the trigger. Move this lever or press the button to switch the direction of rotation. Always ensure the tool has come to a complete stop before changing direction.

7. MAINTENANCE

Proper maintenance ensures the longevity and reliable performance of your trigger switch.

- **Keep Clean:** Regularly clean the exterior of the switch and the tool housing to prevent dust and debris buildup, which can affect performance. Use a dry cloth or compressed air.
- **Avoid Moisture:** Keep the switch and the power tool dry. Moisture can cause electrical shorts and damage.
- **Inspect for Damage:** Periodically inspect the switch for any signs of physical damage, cracks in the casing, or loose connections. Replace the switch immediately if any damage is found.
- **Do Not Lubricate:** Do not apply lubricants or oils directly to the switch mechanism, as this can attract dust and interfere with electrical contacts.

8. TROUBLESHOOTING

If you encounter issues with your trigger switch, refer to the following common problems and solutions:

Problem	Possible Cause	Solution
Tool does not turn on.	No power, loose wiring, faulty switch.	Check power supply. Inspect wire connections. If connections are secure, the switch may be faulty and require replacement.
Speed control is erratic or not working.	Damaged speed control electronics, debris in mechanism.	Ensure the speed control knob (if present) is not stuck. The internal electronics may be damaged, requiring switch replacement.
Lock-on function not engaging/disengaging.	Mechanical issue with the lock button.	Inspect the lock button for obstructions. If it's mechanically damaged, the switch may need replacement.
Reverse function not working.	Damaged reverse lever/button or internal mechanism.	Check the reverse lever/button for physical damage. If the internal mechanism is faulty, the switch requires replacement.

Problem	Possible Cause	Solution
---------	----------------	----------

If troubleshooting steps do not resolve the issue, it is recommended to consult a qualified technician or replace the switch.

9. WARRANTY AND SUPPORT

This product is a replacement part. For warranty information, please refer to the terms and conditions provided by the original seller or manufacturer at the time of purchase. If you require technical support or have questions regarding the compatibility or installation of this switch, please contact the vendor from whom you purchased the product.