



Manuals.plus /

> Advil /

> Advil Liqui-Gels minis Pain Reliever and Fever Reducer, Pain Medicine for Adults with Ibuprofen 200mg for Pain Relief - 200 Liquid Filled Capsules Liquid Gels Mini 200mg

Advil F00573176913

Advil Liqui-Gels minis Instruction Manual

MODEL: F00573176913

Product Overview

Advil Liqui-Gels minis provide the concentrated power of Advil in a 33 percent smaller capsule. These liquid-filled capsules are designed for fast absorption to deliver powerful pain relief for various conditions.

- One bottle of 200 Advil Liqui-Gels minis Pain Reliever and Fever Reducer Liquid Filled Capsules, Pain Medicine for Adults with Ibuprofen 200mg for Pain Relief.
- Liqui-Gel Minis are easy to swallow.
- Effective for headaches, back pain, muscle aches, toothaches, menstrual pain, minor arthritis, and other joint pain.
- Faster and stronger on tough pain than Tylenol Rapid Release Gels.
- Designed for fast absorption, with the same strength as regular size Advil Liqui-Gels.
- Each mini capsule contains ibuprofen 200mg, a non-steroidal anti-inflammatory drug (NSAID).
- HSA and FSA eligible product.

Safety Information and Warnings

Allergy alert:

Ibuprofen may cause a severe allergic reaction, especially in people allergic to aspirin. Symptoms may include: hives, facial swelling, asthma (wheezing), shock, skin reddening, rash, blisters. If an allergic reaction occurs, stop use and seek medical help right away.

Stomach bleeding warning:

This product contains an NSAID, which may cause severe stomach bleeding. The chance is higher if you are age 60 or older, have had stomach ulcers or bleeding problems, take a blood thinning (anticoagulant) or steroid drug, take other drugs containing prescription or nonprescription NSAIDs [aspirin, ibuprofen, naproxen, or others], have 3 or more alcoholic drinks every day while using this product, or take more or for a longer time than directed.

Heart attack and stroke warning:

NSAIDs, except aspirin, increase the risk of heart attack, heart failure, and stroke. These can be fatal. The risk is higher if you use more than directed or for longer than directed.

Do not use if:

- You have ever had an allergic reaction to any other pain reliever/fever reducer.
- Right before or after heart surgery.

Ask a doctor before use if:

- Stomach bleeding warning applies to you.
- You have problems or serious side effects from taking pain relievers or fever reducers.
- You have a history of stomach problems, such as heartburn.
- You have high blood pressure, heart disease, liver cirrhosis, kidney disease, asthma or had a stroke.
- You are taking a diuretic.

Ask a doctor or pharmacist before use if you are:

- Under a doctor's care for any serious condition.
- Taking aspirin for heart attack or stroke, because ibuprofen may decrease this benefit of aspirin.
- Taking any other drug.

When using this product:

Take with food or milk if stomach upset occurs.

Ingredients

Active ingredient: Solubilized ibuprofen equal to 200 mg ibuprofen (NSAID).

Inactive ingredients: FD&C green no. 3, gelatin, medium-chain triglycerides, pharmaceutical ink, polyethylene glycol, potassium hydroxide, purified water, sorbitol sorbitan solution.

Directions for Use

Do not take more than directed. The smallest effective dose should be used.

- **Adults and children 12 years and over:** Take 1 capsule every 4 to 6 hours while symptoms persist. If pain or fever does not respond to 1 capsule, 2 capsules may be used. Do not exceed 6 tablets in 24 hours, unless directed by a doctor.
- **Children under 12 years:** Ask a doctor.

Product Specifications

Feature	Detail
Product Dimensions	2.5 x 2.5 x 4.75 inches; 4.66 ounces
Item Model Number	F00573176913
Manufacturer	Haleon US Services Inc.
Country of Origin	USA
Product Benefits	Pain Relief
Specific Uses For Product	Muscle Pain, Headache, Toothache, Backache, Menstrual Cramps, Minor Arthritis Pain, Fever





Image: Front view of the Advil Liqui-Gels minis bottle, highlighting the 200-count and 200mg ibuprofen dosage.

Advil

FAST, POWERFUL RELIEF

-  **HEADACHES & MIGRAINES**
-  **JOINT & MINOR ARTHRITIS PAIN**
-  **DENTAL PAIN**
-  **PAIN FROM COMMON COLD & FEVER**
-  **MUSCLE & BODY ACHES**
-  **BACK PAIN**
-  **MENSTRUAL PAIN**

Image: Infographic detailing the types of pain Advil Liqui-Gels minis relieve, including headaches, muscle aches, joint pain, back pain, dental pain, menstrual pain, and pain from common cold & fever.



Advil

***LONGER
LASTING
THAN
TYLENOL
LIQUID
GELS***

Image: A person stretching, with text emphasizing that Advil Liqui-Gels minis provide longer-lasting relief than Tylenol Liquid Gels.

EASY TO SWALLOW

UNBEATABLE STRENGTH

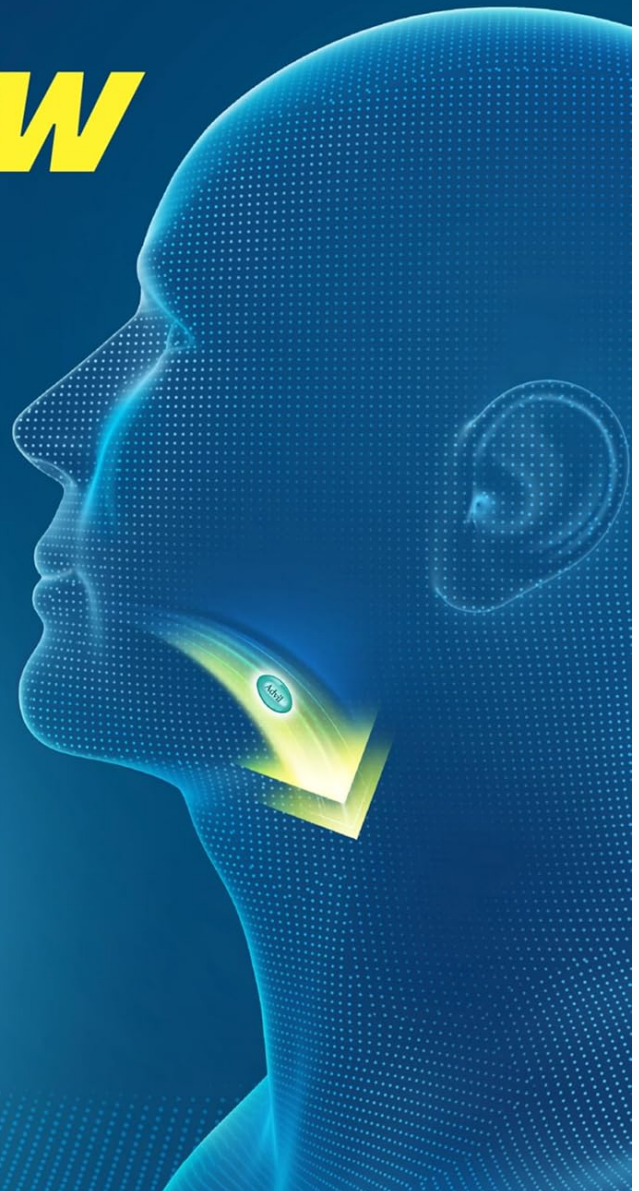


Image: Diagram showing a capsule being swallowed, illustrating the ease of swallowing Advil Liqui-Gels minis and their unbeatable strength.

Advil

***THE SAME STRENGTH
OF ADVIL IN A
33% SMALLER CAPSULE***



Image: A visual representation of the Advil Liqui-Gels mini capsule, highlighting its 33% smaller size compared to regular Advil Liqui-Gels while maintaining the same strength.

Advil
LIQUI-GELS *minis*

**GET FAST
LIQUID RELIEF
AT THE SOURCE
OF PAIN**



Image: A graphic showing the liquid gel capsule with a splash effect, emphasizing fast liquid relief at the source of pain.



Advil



***REDUCES
FEVER***
**& RELIEVES
MINOR ACHES
& PAINS
DUE TO THE
COMMON COLD**

Image: A person gardening, with text indicating that Advil Liqui-Gels minis reduce fever and relieve minor aches and pains associated with the common cold.

<p>Drug Facts</p> <p>Active ingredient (in each capsule) Solubilized ibuprofen equal to 200 mg ibuprofen (NSAID)*Pain reliever/fever reducer <small>(present as the free acid and potassium salt)</small> <small>*nonsteroidal anti-inflammatory drug</small></p> <p>Uses</p> <ul style="list-style-type: none"> temporarily relieves minor aches and pains due to: <ul style="list-style-type: none"> headache toothache backache menstrual cramps the common cold muscular aches minor pain of arthritis temporarily reduces fever <p>Warnings</p> <p>Allergy alert: Ibuprofen may cause a severe allergic reaction, especially in people allergic to aspirin. Symptoms may include:</p> <ul style="list-style-type: none"> hives facial swelling asthma (wheezing) shock skin reddening rash blisters <p>If an allergic reaction occurs, stop use and seek medical help right away.</p> <p>Stomach bleeding warning: This product contains an NSAID, which may cause severe stomach bleeding. The chance is higher if you</p> <ul style="list-style-type: none"> are age 60 or older have had stomach ulcers or bleeding problems take a blood thinning (anticoagulant) or steroid drug take other drugs containing prescription or nonprescription NSAIDs (aspirin, ibuprofen, naproxen, or others) have 3 or more alcoholic drinks every day while using this product take more or for a longer time than directed <p>Heart attack and stroke warning: NSAIDs, except aspirin, increase the risk of heart attack, heart failure, and stroke. These can be fatal. The risk is higher if you use more than directed or for longer than directed.</p> <p>Do not use</p> <ul style="list-style-type: none"> if you have ever had an allergic reaction to any other pain reliever/fever reducer right before or after heart surgery <p>Ask a doctor before use if</p> <ul style="list-style-type: none"> stomach bleeding warning applies to you you have problems or serious side effects from taking pain relievers or fever reducers you have a history of stomach problems, such as heartburn you have high blood pressure, heart disease, liver cirrhosis, kidney disease, asthma, or had a stroke you are taking a diuretic <p>Ask a doctor or pharmacist before use if you are</p> <ul style="list-style-type: none"> under a doctor's care for any serious condition taking aspirin for heart attack or stroke, because ibuprofen may decrease this benefit of aspirin taking any other drug 	
<p>Drug Facts (continued)</p> <p>When using this product</p> <ul style="list-style-type: none"> take with food or milk if stomach upset occurs <p>Stop use and ask a doctor if</p> <ul style="list-style-type: none"> you experience any of the following signs of stomach bleeding: <ul style="list-style-type: none"> feel faint vomit blood have bloody or black stools have stomach pain that does not get better you have symptoms of heart problems or stroke: <ul style="list-style-type: none"> chest pain trouble breathing weakness in one part or side of body slurred speech leg swelling pain gets worse or lasts more than 10 days fever gets worse or lasts more than 3 days redness or swelling is present in the painful area any new symptoms appear <p>If pregnant or breast-feeding, ask a health professional before use. It is especially important not to use ibuprofen at 20 weeks or later in pregnancy unless definitely directed to do so by a doctor because it may cause problems in the unborn child or complications during delivery.</p> <p>Keep out of reach of children. In case of overdose, get medical help or contact a Poison Control Center right away.</p> <p>Directions</p> <ul style="list-style-type: none"> do not take more than directed the smallest effective dose should be used adults and children 12 years and over: take 1 capsule every 4 to 6 hours while symptoms persist if pain or fever does not respond to 1 capsule, 2 capsules may be used do not exceed 6 capsules in 24 hours, unless directed by a doctor children under 12 years: ask a doctor <p>Other information</p> <ul style="list-style-type: none"> each capsule contains: potassium 20 mg read all warnings and directions before use. store at 20-25°C (68-77°F) avoid excessive heat above 40°C (104°F) <p>Inactive ingredients</p> <p>FD&C green no. 3, gelatin, medium-chain triglycerides, pharmaceutical ink, polyethylene glycol, potassium hydroxide, purified water, sorbitol sorbitan solution</p> <p>Questions or comments? call toll free 1-800-88-ADVIL</p> <p>For most recent product information, visit www.Advil.com Distributed by: GSK Consumer Healthcare, Warren, NJ 07059 Trademarks are owned by or licensed to the GSK group of companies ©2023 GSK group of companies or its licensor LIQUI-GELS® is a trademark or registered trademark of Catalent Pharma Solutions. Patents: www.productpats.com</p> <p>202554</p>	

Image: A detailed view of the "Drug Facts" label from the Advil Liqui-Gels minis packaging, showing active ingredients, purpose, uses, warnings, and directions.

MANAGE ACHES & PAINS FOLLOWING YOUR VACCINATION



HEADACHE



**FEVER,
CHILLS**



**PAIN,
SWELLING**



Image: Icons representing headache, fever/chills, and pain/swelling, with text stating that Advil Liqui-Gels minis can help manage aches and pains following vaccination.

*Tough on pain,
not on the planet*



Advil stands behind sustainability. Our commitment is to continue using the same green technology we developed in 2022.

Image: The Advil Liqui-Gels minis bottle with green leaves, promoting the product's commitment to sustainability and reduced plastic use.



ALL **Advil** ITEMS ARE

FSA  **HSA**

ELIGIBLE

Image: A person sitting by a river, with text highlighting that all Advil items, including Liqui-Gels minis, are FSA and HSA eligible.

*Relief for **you.**
Relief for the
Environment.*



**ADVIL REDUCED THE PLASTIC IN
OVER 80 MILLION BOTTLES BY 20%***

*In 2022, Advil changed its technology to keep more plastic out of the environment resulting in 20% reduction compared to the previous 2021 bottle.

Image: An aerial view of a person in a kayak, with text stating "Relief for you. Relief for the Environment." and "ADVIL REDUCED THE PLASTIC IN OVER 80 MILLION BOTTLES BY 20%*".



Image: Side view of the Advil Liqui-Gels minis bottle, showing the barcode and a "Lift Here for More Drug Facts" tab.



Image: Top-down view of the blue bottle cap of Advil Liqui-Gels minis, showing the child-resistant mechanism.

Official Product Videos

The following video is provided by the seller and offers additional information about the product.

Your browser does not support the video tag.

Video: "Advil Project Green stock" - This video highlights Advil's commitment to sustainability and reduction of plastic in their packaging.

Troubleshooting

If you experience any of the following signs of stomach bleeding, stop use and ask a doctor immediately:

- Feeling faint
- Vomiting blood
- Having bloody or black stools

- Stomach pain that does not get better

If you have symptoms of heart problems or stroke, stop use and ask a doctor immediately:

- Chest pain
- Trouble breathing
- Weakness in one part or side of body
- Slurred speech
- Leg swelling

Also, stop use and ask a doctor if:

- Pain gets worse or lasts more than 10 days.
- Fever gets worse or lasts more than 3 days.
- Redness or swelling is present in the painful area.
- Any new symptoms appear.

In case of overdose, get medical help or contact a Poison Control Center right away.

Support Information

For most recent product information, visit the official Advil website: www.advil.com

For questions or comments, call toll-free: **1-800-88-ADVIL**

Advil is a registered trademark of Haleon US Services Inc. or its licensor. ©2023 GSK group of companies or its licensor.

Distributed by Haleon US Services Inc., Parsippany, NJ 07054.