

## RICOO S3811

# RICOO S3811 TV Wall Mount Instruction Manual

Model: S3811 | Brand: RICOO

## 1. INTRODUCTION

This manual provides detailed instructions for the safe and proper installation, operation, and maintenance of your RICOO S3811 TV Wall Mount. Please read this manual thoroughly before installation to ensure correct setup and to prevent damage or injury.



Image: The RICOO S3811 TV Wall Mount, a black, articulated arm mount designed for flat-panel displays.

## 2. SAFETY INFORMATION

**WARNING: Failure to read and follow these instructions may result in serious personal injury, property damage, or voiding of your warranty.**

- Ensure the mounting surface can safely support the combined weight of the mount and the display.
- Do not exceed the maximum load capacity of 20 kg (44 lbs).
- This mount is designed for VESA patterns 75x75mm and 100x100mm. Verify your display's VESA pattern before installation.
- Use appropriate tools and follow all drilling instructions carefully.
- Always use a stud finder to locate wooden studs or ensure you are drilling into solid concrete/brick walls.
- Keep children and pets away during installation.
- If you are unsure about any part of the installation process, consult a qualified professional.

### 3. PACKAGE CONTENTS

---

Verify that all components are present and undamaged before beginning installation.

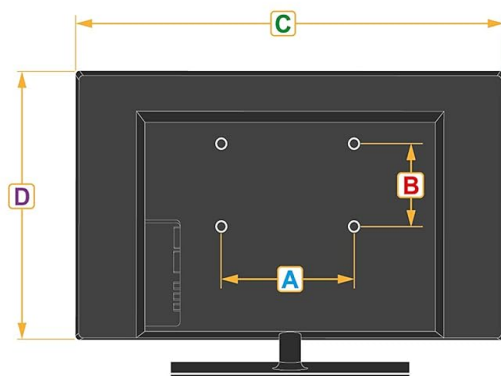
- Pre-assembled Wall Mount Unit (1)
- Wall Plugs for Concrete Walls (Quantity as needed)
- Screws for TV/Monitor Attachment (Various sizes)
- Wall Mounting Screws (Quantity as needed)
- Installation Hardware and Accessories (Washers, spacers, etc.)

### 4. INSTALLATION GUIDE

---

#### 4.1 Pre-Installation Checks

- **VESA Compatibility:** Ensure your TV or monitor has a VESA mounting pattern of 75x75mm or 100x100mm.
- **Weight Capacity:** Confirm your display's weight does not exceed 20 kg (44 lbs).
- **Wall Type:** Identify your wall type (solid concrete, brick, wood stud). Use appropriate anchors/screws.



<b>A</b>	75 100 mm	<b>B</b>	75 100 mm
<b>C</b>	min.: 150 mm	<b>D</b>	min.: 150 mm

VESA A x B (mm)	
50 x 50	✗
75 x 75	✓
100 x 100	✓
100 x 200	✗
200 x 100	✗
200 x 200	✗
300 x 100	✗
300 x 200	✗
300 x 300	✗
400 x 200	✗
400 x 400	✗
500 x 300	✗
600 x 200	✗
600 x 400	✗
660 x 330	✗
700 x 400	✗
800 x 400	✗
1000 x 600	✗

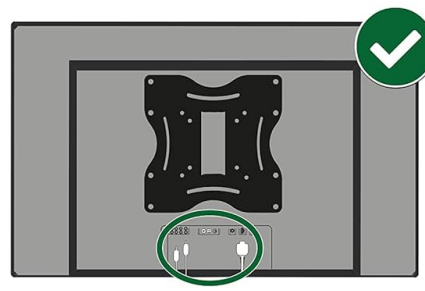
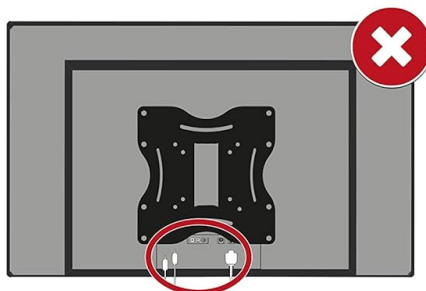


Image: A diagram illustrating VESA compatibility, showing supported (green check) and unsupported (red X) VESA patterns. The S3811 supports 75x75mm and 100x100mm.

## 4.2 Mounting the Wall Plate

1. Determine the desired height and position for your display.
2. Place the wall plate against the wall and mark the drilling holes. Use a level to ensure it is straight.
3. Drill pilot holes at the marked locations. For wood studs, drill directly. For concrete/brick, insert wall plugs.
4. Secure the wall plate to the wall using the provided wall mounting screws. Ensure it is firmly attached.

## 4.3 Attaching the Bracket to the Display

1. Carefully place your TV/monitor face down on a soft, clean surface to prevent scratches.
2. Align the mounting bracket of the S3811 to the VESA holes on the back of your display.
3. Select the appropriate screws from the provided hardware kit that fit your display's VESA holes. Use washers and spacers if necessary to ensure a secure fit without overtightening.
4. Tighten the screws firmly, but do not overtighten.

## 4.4 Mounting the Display to the Wall Plate

1. With assistance, carefully lift the display with the attached bracket.
2. Hook the bracket onto the wall plate. Ensure it is securely seated.
3. Secure the display to the wall plate using any locking mechanisms or screws provided with the mount.

## 5. OPERATION AND ADJUSTMENTS

---

The RICOO S3811 offers various adjustment options for optimal viewing.

- **Tilt Adjustment:** The display can be tilted  $+12^{\circ}/-5^{\circ}$  to reduce glare and achieve a comfortable viewing angle. Loosen the tilt knobs, adjust, and then retighten.
- **Swivel Adjustment:** The mount allows for  $180^{\circ}$  swivel (left/right) depending on screen width, providing flexible viewing from different positions in the room.
- **Rotation:** The front panel can be rotated  $\pm 3^{\circ}$  for fine-tuning the horizontal level of your display after installation.
- **Distance from Wall:** The distance from the wall can be adjusted between 50mm and 180mm by extending or retracting the arm.

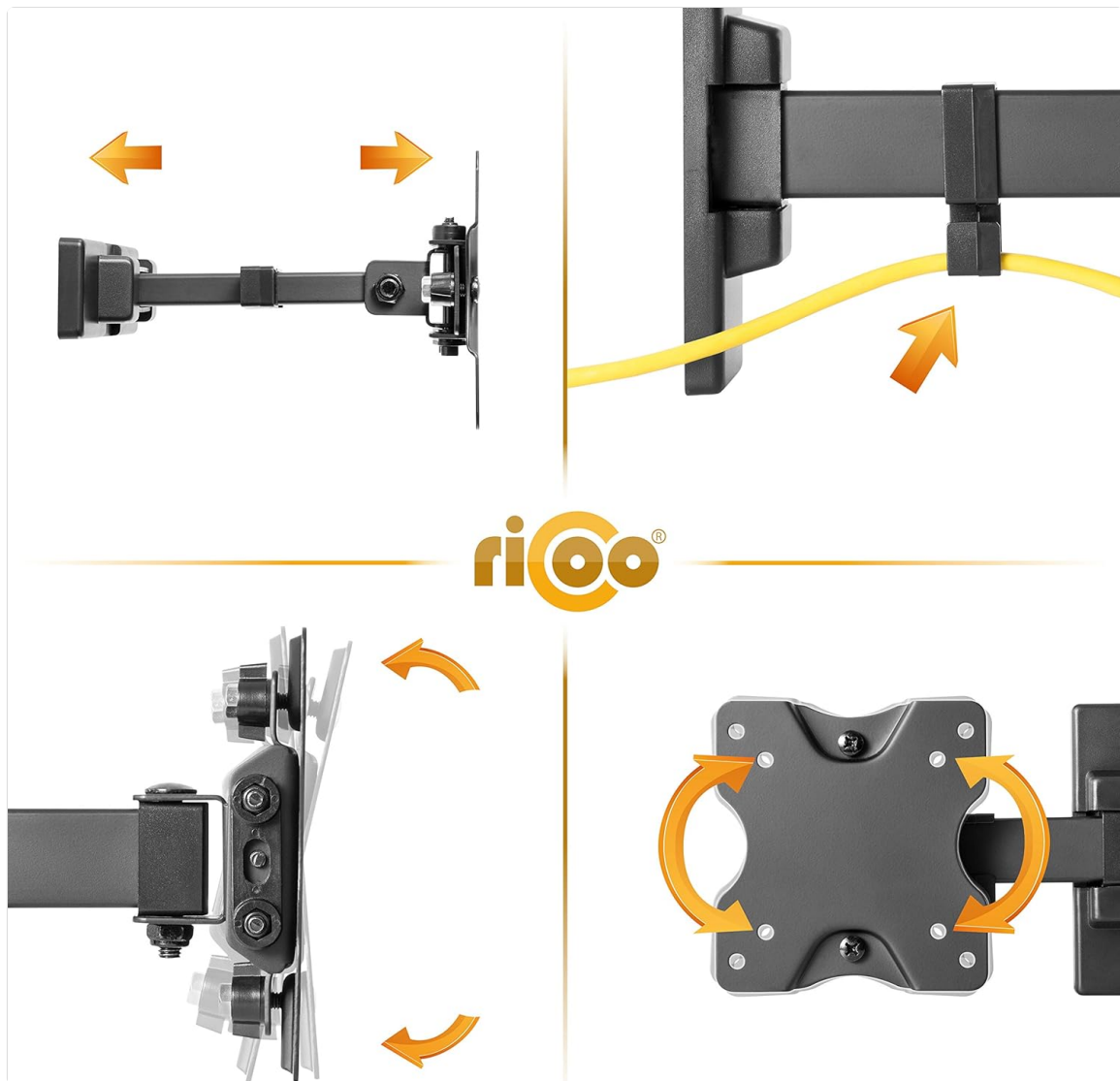


Image: A composite image demonstrating the various adjustment capabilities of the mount, including tilt, swivel, rotation, and cable management.

## 5.1 Cable Management

The mount includes integrated cable management clips or channels to keep cables tidy and out of sight. Route your display cables through these features for a clean installation.

## 6. MAINTENANCE

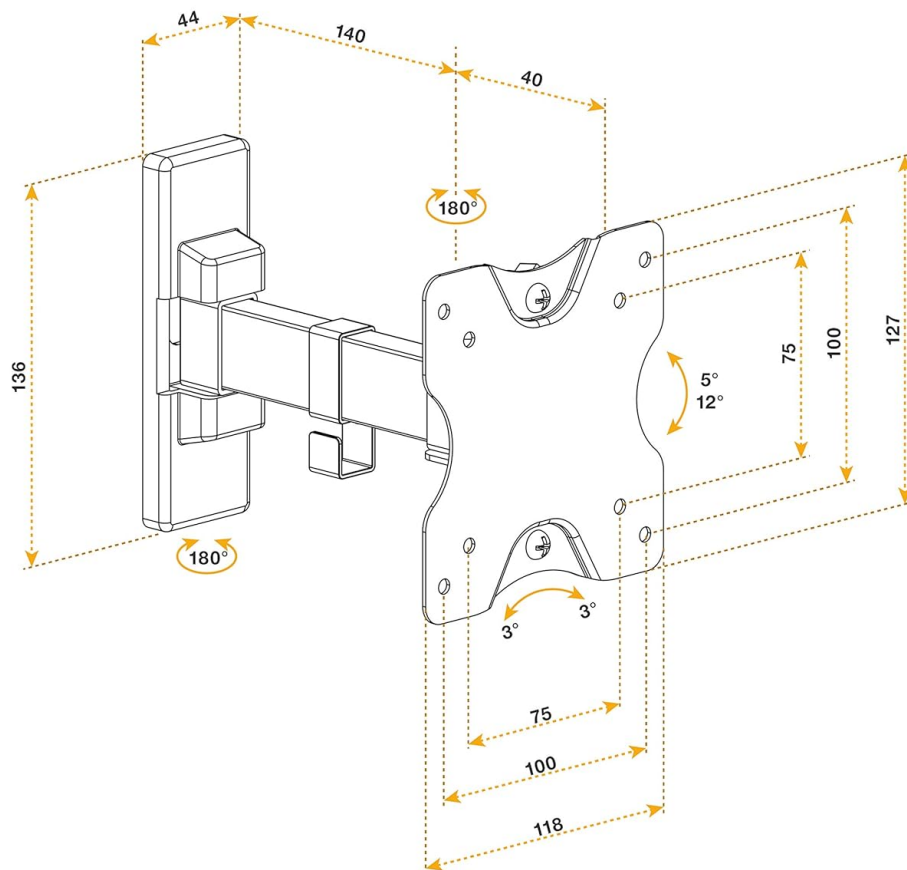
- Periodically check all screws and connections to ensure they remain tight and secure.
- Clean the mount with a soft, dry cloth. Do not use abrasive cleaners or solvents.
- Do not lubricate any parts of the mount.

## 7. TROUBLESHOOTING

Problem	Possible Cause	Solution
Mount feels unstable after installation.	Screws not fully tightened; incorrect wall anchors used; wall not strong enough.	Re-tighten all screws. Ensure correct anchors for your wall type. Consult a professional if wall strength is a concern.
Display is not level.	Wall plate not level; front panel rotation needs adjustment.	Use the $\pm 3^\circ$ rotation feature to level the display. If the wall plate is significantly off, re-install.
Difficulty adjusting tilt/swivel.	Adjustment knobs/screws are too tight.	Loosen the relevant adjustment knobs/screws slightly, make the adjustment, then re-tighten.

## 8. SPECIFICATIONS

Model Number	S3811
Brand	RICOO
Compatible Screen Sizes	13 - 27 inches (33 - 69 cm)
VESA Compatibility	75x75mm, 100x100mm
Maximum Load Capacity	20 kg (44 lbs)
Tilt Angle	$+12^\circ$ / $-5^\circ$
Swivel Angle	$180^\circ$ (screen dependent)
Rotation	$\pm 3^\circ$
Distance from Wall	50mm - 180mm
Material	Alloy Steel
Color	Black



\* mm

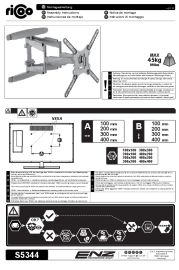
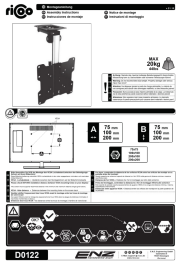
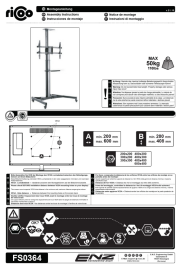



Image: A technical diagram showing the detailed dimensions and adjustable angles of the RICOO S3811 wall mount in millimeters.

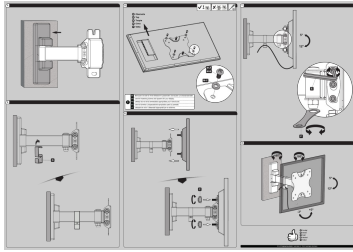
## 9. WARRANTY AND SUPPORT

RICOO products are manufactured with quality and durability in mind. For specific warranty information, please refer to the warranty card included with your product or visit the official RICOO website.

If you encounter any issues or have questions regarding your RICOO S3811 TV Wall Mount, please contact RICOO customer support for assistance. Contact details can typically be found on the product packaging or the official brand website.



	<p><a href="#">RICO S5344 TV Wall Mount Assembly Instructions</a></p> <p>Comprehensive assembly instructions for the RICO S5344 TV wall mount, detailing installation steps, VESA compatibility, and safety precautions for various wall types.</p>
	<p><a href="#">RICO D0122 TV Ceiling Mount Assembly Instructions</a></p> <p>Comprehensive assembly instructions for the RICO D0122 TV ceiling mount. Learn how to safely install your TV, adjust height and swivel, and understand VESA compatibility. Includes parts list and safety guidelines.</p>
	<p><a href="#">RICO FS0364 Mobile TV Stand Assembly Instructions</a></p> <p>A comprehensive guide to assembling the RICO FS0364 mobile TV stand with adjustable height, tilt, and swivel features, including a shelf. This manual provides step-by-step instructions and safety warnings for proper installation.</p>
	<p><a href="#">RICO TRH-12 Swivel Under-Desk Mount Assembly Instructions</a></p> <p>Comprehensive assembly instructions for the RICO TRH-12 swivel under-desk mount, detailing parts, steps, and safety precautions for installation.</p>
	<p><a href="#">RICO SE0564 Electric Tilting Ceiling TV Mount Assembly Instructions</a></p> <p>Detailed assembly instructions for the RICO SE0564 electric tilting ceiling TV mount, covering installation, parts, remote functions, and troubleshooting. Supports VESA up to 600x400mm and a maximum load of 35kg.</p>
	<p><a href="#">RICO TRH-01 Mounting Bracket Assembly Instructions and User Guide</a></p> <p>Comprehensive assembly instructions and user guide for the RICO TRH-01 mounting bracket. Learn how to safely install and use your new mounting solution.</p>



[\[pdf\]](#) User Manual

Gebrauchs Montageanleitung Manual TV Wandhalterung mit Schwenk und Neigefunktion S3811 RICOO

v2111 Bedienungsanleitung cdn03 plentymarkets 5yuwdqupu22p propertyItems 720 |||

3 4 D 5 7 DE Oberseite EN Top FR Toupie ES Cima IT Vetta M-A M-B M-C DE

Benutzen Sie die fr Ihre ... it ES Hecho IT Fatto E.N.Z. Engineering GmbH,

Salzmatten 6, 79341 Kenzingen Germany v.21.11 **S3811** DE EN FR ES IT E-Mail:

support ricoo.de www.ricoo.eu E.N.Z. Engineering GmbH Salzmatten 6 ...

lang:de **score:30** filesize: 1.29 M page\_count: 2 document date: 2022-02-08