

## Manuals+

[Q & A](#) | [Deep Search](#) | [Upload](#)

manuals.plus /

› [Samsung](#) /

› [Samsung 32-inch UJ59 Series 4K UHD Monitor \(LU32J590UQNXZA\) - User Manual](#)

## Samsung LU32J590UQNXZA

# Samsung 32-inch UJ59 Series 4K UHD Monitor User Manual

Model: LU32J590UQNXZA

## 1. INTRODUCTION

This manual provides essential information for the safe and efficient use of your Samsung 32-inch UJ59 Series 4K UHD Monitor. Please read these instructions thoroughly before operating the device and retain them for future reference. This monitor is designed to deliver a high-quality visual experience for various applications, including productivity, entertainment, and gaming.



Image: Front view of the Samsung 32-inch UJ59 Series 4K UHD Monitor.

## 2. SAFETY INFORMATION

To reduce the risk of electric shock, do not remove the cover. No user-serviceable parts inside. Refer servicing to qualified service personnel. Do not expose this appliance to rain or moisture. Do not block ventilation openings. Use only attachments/accessories specified by the manufacturer. Disconnect the apparatus during lightning storms or when unused for long periods.

## 3. SETUP

### 3.1 Unpacking and Assembly

Carefully remove the monitor and its components from the packaging. Ensure all parts are present: monitor panel, stand base, stand neck, power cable, and HDMI cable. Assemble the two-piece Y-shaped stand by attaching the stand neck to the stand base, then securely mount the monitor panel to the assembled stand. For VESA mount compatibility, refer to the specifications section for mounting hole dimensions.



① HDMI IN 1   ② HDMI IN 2   ③ DP IN   ④ DC 19V

Image: Rear view of the Samsung UJ59 monitor, highlighting the input ports.

### 3.2 Connecting Cables

1. **Power:** Connect the power cable to the monitor's DC 19V input and then to a power outlet.
2. **Video Input:** Connect the provided HDMI cable to one of the HDMI IN ports (HDMI IN 1 or HDMI IN 2) on the monitor and to your computer's HDMI output. Alternatively, use a DisplayPort cable to connect to the DP IN port.

Ensure all connections are secure before powering on the monitor.

## 4. OPERATING

### 4.1 Basic Controls and OSD Menu

The monitor features a single joystick-style button located on the rear of the monitor for power control and OSD (On-Screen Display) menu navigation. Press the button to power on/off or access the OSD menu. Move the joystick up, down, left, or right to navigate through menu options and adjust settings.

Your browser does not support the video tag. Please update your browser.

Video: A brief product overview demonstrating the monitor's features and controls.

### 4.2 Key Features

- **4K UHD Resolution (3840x2160):** Experience stunning visual clarity with four times the pixels of Full HD.
- **1 Billion Color Shades:** The UJ59 delivers incredibly vivid and realistic images with accurate and true-to-life colors, ideal for photo and video editing.

# Delivers incredibly vivid and realistic images

A Billion Color Shades



Image: Visual comparison of color depth on a conventional monitor versus the Samsung UJ59 monitor.

- **AMD FreeSync:** Synchronizes the refresh rate of your graphics card and monitor to reduce image tear and stutter, providing smoother gameplay.
- **Game Mode:** Instantly optimizes screen contrast to reveal more detail in dark areas, enhancing your competitive edge in games.

# Smoother Gameplay

AMD FreeSync™

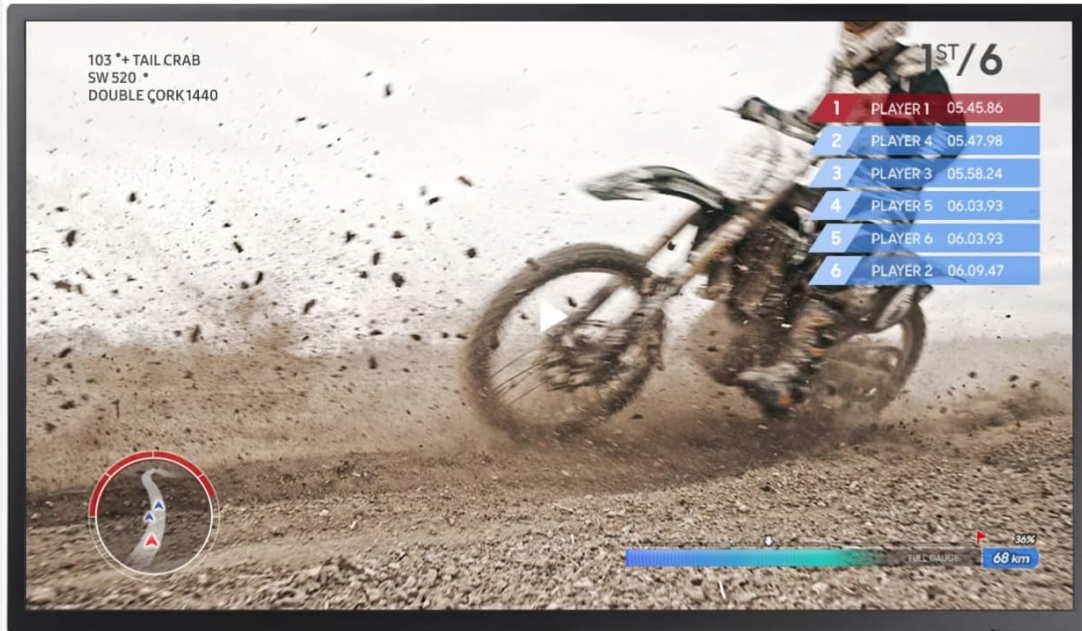


Image: A gaming scene displayed on the Samsung UJ59 monitor, illustrating the benefit of smoother gameplay.

- **Eye Saver Mode / Flicker Free:** Reduces blue light emissions and eliminates screen flickering to minimize eye strain during extended use.

Your browser does not support the video tag. Please update your browser.

Video: Demonstration of Eye Saver and Flicker Free features on a Samsung monitor.

- **Picture-by-Picture (PBP) & Picture-in-Picture (PIP):** Connect two different input sources to the monitor simultaneously. PBP displays both sources side-by-side, while PIP allows you to resize and position a secondary source window anywhere on the screen.
- **Seamless Upscaling:** Samsung's UHD upscaling technology enhances lower-resolution content (SD, HD, Full HD) to near UHD-level picture quality.

## 5. MAINTENANCE

### 5.1 Cleaning the Monitor

To clean the screen, gently wipe it with a soft, lint-free cloth. For stubborn marks, lightly dampen the cloth with water or a mild, non-abrasive screen cleaner. Avoid using alcohol, ammonia, or abrasive cleaners. For the monitor casing, use a soft, dry cloth.

### 5.2 General Care

Avoid placing heavy objects on the monitor. Do not expose the monitor to direct sunlight or heat sources. Ensure adequate ventilation around the monitor to prevent overheating.

## 6. TROUBLESHOOTING

- **No Display:** Check if the power cable is securely connected and the monitor is powered on. Verify that the video input cable (HDMI/DisplayPort) is correctly connected to both the monitor and the computer. Ensure the correct input source is selected via the OSD menu.
- **Flickering Screen:** Enable Eye Saver Mode or Flicker Free mode in the OSD settings. Check for loose video cable connections.
- **Color Issues:** Adjust color settings (contrast, brightness, color temperature) through the OSD menu. Ensure your graphics card drivers are up to date.
- **No Sound:** If using external speakers connected to the monitor's audio output, ensure they are properly connected and powered. Adjust the volume via the OSD menu or your computer's settings.

## 7. SPECIFICATIONS

Feature	Specification
Screen Size	31.5 Inches
Resolution	3840 x 2160 (4K UHD)
Panel Type	VA Panel
Aspect Ratio	16:9
Refresh Rate	60Hz
Response Time	4ms
Color Support	1 Billion Colors
Connectivity	2x HDMI, 1x DisplayPort
Special Features	AMD FreeSync, Game Mode, Eye Saver Mode, Flicker Free, PBP/PIP
VESA Mount Compatible	Yes
Dimensions (LxWxH)	9.9 x 28.72 x 21.04 inches
Weight	16.61 pounds

## 8. WARRANTY AND SUPPORT

For warranty information and technical support, please refer to the documentation included with your product or visit the official Samsung support website. You can also find additional resources and FAQs online.