

Conair CD701GNR

Conair Double Ceramic 1-Inch Curling Iron User Manual

Model: CD701GNR

INTRODUCTION

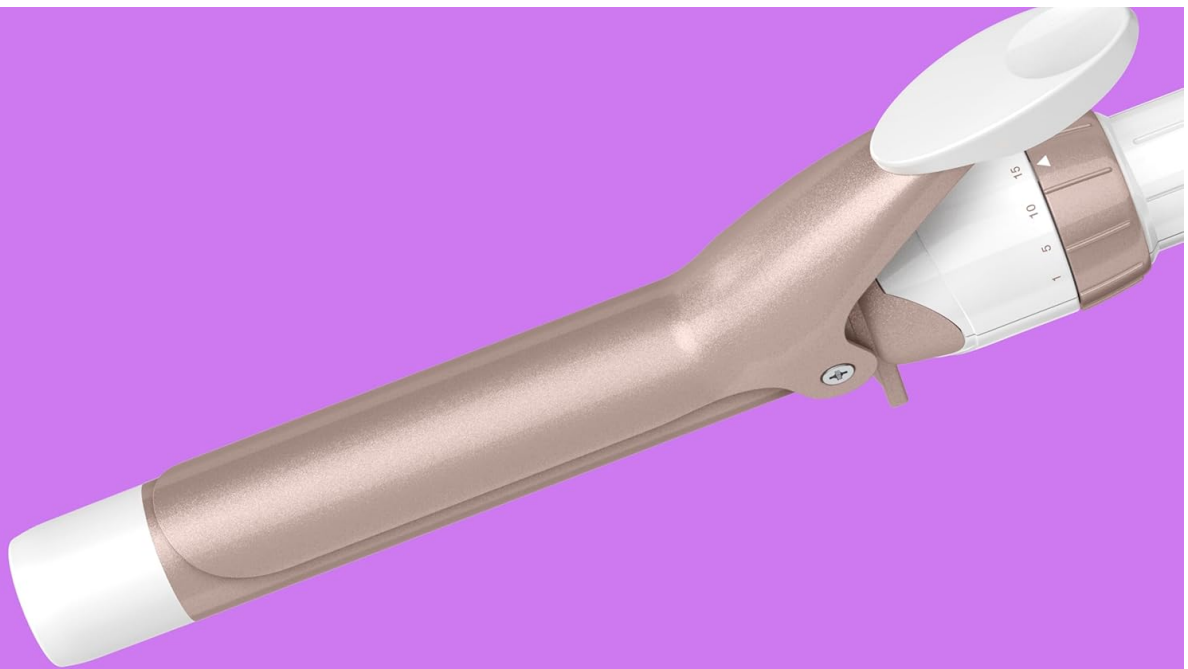
The Conair Double Ceramic 1-Inch Curling Iron is designed to create classic, frizz-free curls and waves. Featuring a 1-inch barrel, 30 heat settings up to 400°F, and a Turbo Heat boost, this tool offers versatile styling for various hair types. Its cool tip and auto-off feature enhance user safety and convenience.

SAFETY INFORMATION

- Keep away from water. Do not use near bathtubs, showers, basins, or other vessels containing water.
- Do not use on damp or wet hair. Ensure hair is completely dry before use.
- Unplug the appliance immediately after use.
- Keep out of reach of children.
- Always place the hot iron on a heat-resistant surface when not in use.
- Do not wrap the power cord around the appliance.

PRODUCT FEATURES

- **1-Inch Double Ceramic Barrel:** Provides even heat distribution for consistent, long-lasting curls and reduced frizz.
- **30 Heat Settings:** Adjustable temperature control for various hair types and styling needs.
- **Turbo Heat Boost:** Delivers an extra burst of heat for faster styling.
- **Up to 400°F High Heat:** Achieves professional-level styling results.
- **Cool Tip:** Ensures safe handling during styling.
- **Auto-Off Feature:** Automatically shuts off for safety and peace of mind.
- **Dual Voltage:** Ideal for international travel.
- **Recessed Buttons:** Prevents accidental shutoffs during use.



Fast styling,
long-lasting styles.
Higher ceramic
content* makes
it happen

*As compared to standard
Conair® ceramic coating.

Image: Conair Double Ceramic 1-Inch Curling Iron with callouts for 1-inch barrel, cool tip, 30 heat settings, 400°F high heat turbo function, 30-second heat-up, and dual voltage.

SETUP

1. Unpack the curling iron and remove all packaging materials.
2. Ensure the appliance is clean and free from any debris.
3. Place the curling iron on a heat-resistant surface.
4. Plug the curling iron into a suitable electrical outlet.

OPERATING INSTRUCTIONS

1. **Power On:** Plug the curling iron in and press the **On** button. The indicator light will illuminate.
2. **Select Heat Setting:** Rotate the dial to select your desired heat temperature from 1 to 30. Refer to the Heat Guide below for recommendations.
3. **Turbo Heat (Optional):** For an extra boost of heat up to 400°F, press the **Turbo Heat** button.
4. **Prepare Hair:** Section dry hair evenly. Comb each section to ensure it is tangle-free before curling.
5. **Position Iron:** Once the iron has reached the desired heat setting, open the clamp and place the barrel midway up the hair section.

- 6. **Curl Hair:** Spread the hair evenly between the clamp and the barrel. Release the automatic curl release to hold the hair in place. Gently slide the curling iron down towards the ends of your hair. Wind the hair as far up as desired and hold for 8-12 seconds.
- 7. **Adjust Curl Intensity:** For tighter, bouncier curls, roll less hair. For looser, free-flowing curls, roll more hair.
- 8. **Release Curl:** To remove the curl, unwind the hair and press the automatic curl release.
- 9. **Power Off:** After styling, press the **Off** button and unplug the appliance.



Image: A woman's hair before and after using the 1-inch curling iron, demonstrating the creation of flawless classic curls.

HEAT SETTINGS GUIDE

The Conair Double Ceramic 1-Inch Curling Iron offers 30 heat settings. Use the following guide to select the appropriate temperature for your hair type:

Heat Setting Range	Hair Type
1-5	Fragile Fine hair
6-10	Thin hair
11-15	Medium hair

Heat Setting Range	Hair Type
16-20	Wavy Curly hair
21-30	Coily Thick hair



The image shows a close-up of the curling iron's control panel. It features a large, white, oval-shaped heat dial with a gold-colored ring around it. The dial has numbers 1, 5, 25, and 30. Below the dial are two buttons: a 'TURBO' button with three dots and an 'ON/OFF' button with a single dot. The background is a solid purple color.

Heat Guide

- 21-30** Coily | Thick hair
- 16-20** Wavy | Curly hair
- 11-15** Medium hair
- 6-10** Thin hair
- 1-5** Fragile | Fine hair

Up to 400°F
for fast styling
and long-lasting
styles

Image: Close-up of the curling iron's heat dial and buttons, with a visual heat guide for different hair types.

MAINTENANCE

- **Cleaning:** Ensure the appliance is unplugged and completely cool before cleaning. Wipe the barrel and handle with a soft, damp cloth. Do not use abrasive cleaners or solvents.
- **Storage:** Store the curling iron in a cool, dry place. Do not wrap the cord around the appliance, as this can damage the cord.
- **Inspection:** Regularly inspect the cord for any signs of damage. If the cord is damaged, discontinue use and contact customer support.

TROUBLESHOOTING

- **Appliance not heating:** Ensure the curling iron is properly plugged into a working electrical outlet and the power button is pressed. Check if the outlet is functional by plugging in another appliance.
- **Curls not holding:** Ensure your hair is completely dry before curling. Use an appropriate heat setting for your hair type (refer to the Heat Settings Guide). Hold the hair on the barrel for the recommended duration (8-12 seconds). Consider using a heat protectant spray before curling and a light hairspray after for better hold.
- **Hair getting caught:** Ensure hair sections are combed and tangle-free. Avoid wrapping too much hair around the barrel at once.

SPECIFICATIONS

- **Model Number:** CD701GNR
- **Barrel Size:** 1 inch
- **Material:** Double Ceramic
- **Heat Settings:** 30
- **Maximum Heat:** 400°F (with Turbo Heat)
- **Features:** Cool Tip, Auto-Off, Dual Voltage, Turbo Heat Boost
- **Product Dimensions:** 3.9 x 1.69 x 1.69 inches
- **Item Weight:** 1.13 ounces
- **Color:** White/Rose Gold

WARRANTY AND SUPPORT

For warranty information or customer support, please refer to the documentation included with your product or visit the official Conair website. The product typically includes a manufacturer's warranty covering defects in materials and workmanship.