

## Manuals+

[Q & A](#) | [Deep Search](#) | [Upload](#)

[manuals.plus](#) /

› [JOINLGO](#) /

› [JOINLGO 4 Channel 256GB 1080P AHD HD Mobile Vehicle Car DVR Black Box Video Recorder Kit with 4pcs Waterproof Side Rear View Backup Night Vision Metal IR 2.0MP Car Camera 7" HD Car Monitor User Manual](#)

## JOINLGO J12

# JOINLGO 4 Channel Mobile Vehicle DVR Kit User Manual

Model: J12

## 1. INTRODUCTION

This manual provides detailed instructions for the installation, operation, and maintenance of your JOINLGO 4 Channel 256GB 1080P AHD HD Mobile Vehicle Car DVR Black Box Video Recorder Kit. Please read this manual thoroughly before using the product to ensure proper functionality and safety.

### Package Contents

Verify that all items listed below are included in your package. If any items are missing or damaged, please contact customer support.

- 1 x SD 1080P 4-Channel Mobile DVR (MDVR)
- 1 x 7-inch VGA Monitor
- 4 x 1080P AHD Cameras
- 1 x Accessory Kit (includes remote control, keys, various cables)
- Cables (1 x 16.4 ft, 2 x 32.8 ft, 1 x 49.2 ft)
- Memory Card (capacity up to 256GB, actual card may vary or be sold separately)

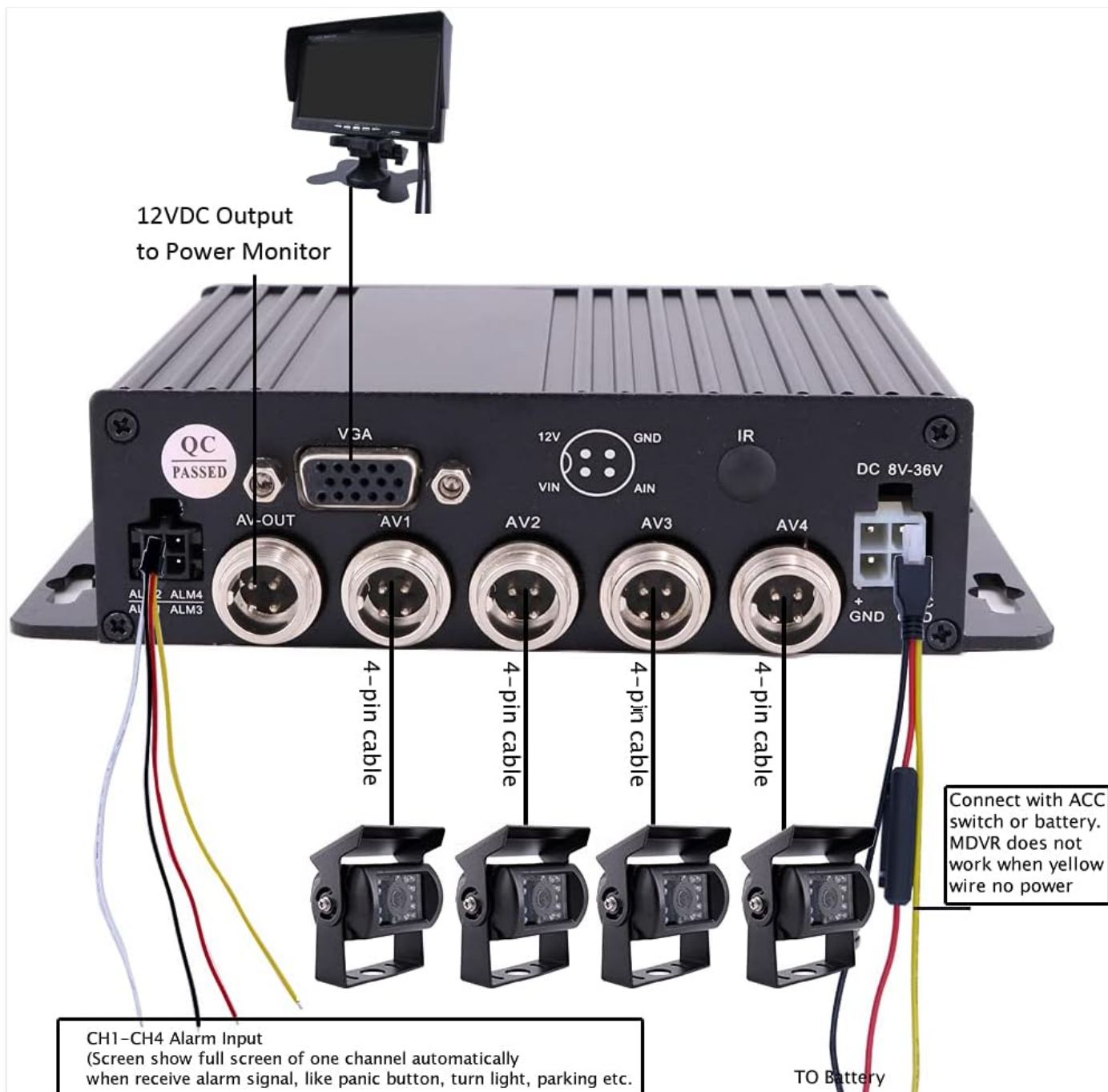


Complete JOINLGO 4 Channel Mobile DVR Kit components.

## 2. SETUP AND INSTALLATION

### Wiring Diagram

The system features a plug-and-play design with 4-pin connectors for secure, waterproof connections. Follow the diagram below for correct wiring.



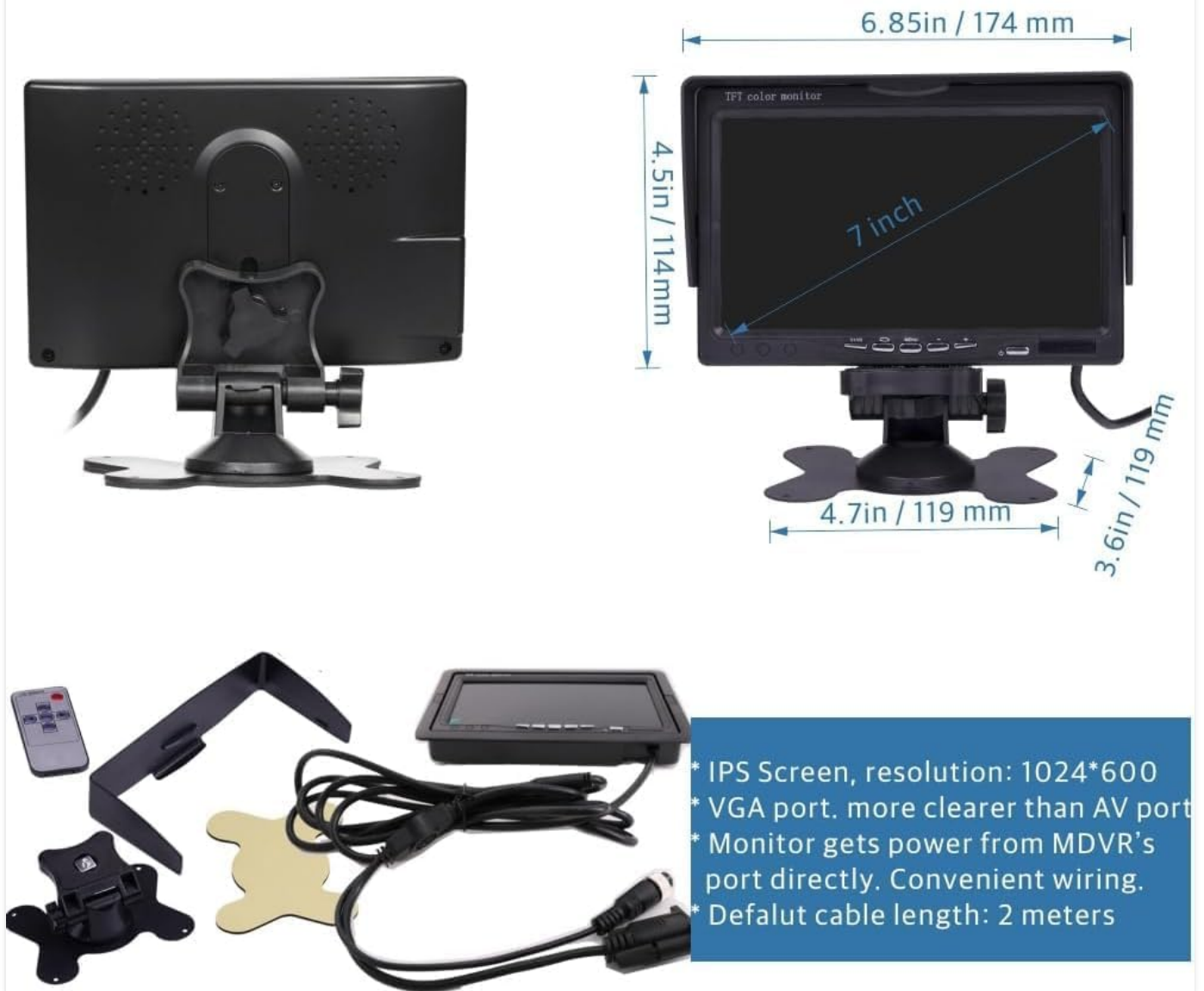
Detailed wiring connections for the MDVR system.

- Connect the 12VDC output from the MDVR to the power input of the monitor.
- Connect each of the four cameras to the AV1, AV2, AV3, and AV4 inputs on the MDVR using the provided 4-pin cables.
- Connect the MDVR's power input (DC 8V-36V) to your vehicle's power source. Ensure the yellow wire is connected to a constant power source (ACC switch or battery) for the MDVR to function.
- The alarm input wires (ALM1-ALM4) can be connected to trigger signals (e.g., turn light, parking sensor) to automatically display a full screen of the corresponding camera.

## Camera Installation

The cameras are designed for outdoor use with an IP68 waterproof rating and full metal casing. Choose appropriate mounting locations for optimal viewing angles.

## Details of Monitor



Example of camera mounting for side or rear view.

Ensure the camera is securely mounted and its position provides the desired field of view (120 degrees). The cameras feature 18 IR pieces for enhanced night vision.

### 3. OPERATION

#### Recording Features

- **Loop Record:** The MDVR records continuously, overwriting the oldest footage when the memory card is full. It supports up to 256GB capacity.
- **Delay Record:** The system can record footage for up to 24 hours after the vehicle is turned off, drawing power from the vehicle's battery.
- **Alarm Input:** Supports 4-channel alarm inputs. When a trigger signal is received (e.g., reverse gear, turn signal), the monitor will automatically display the full screen of the corresponding camera. Associated footage can be marked as overwrite-protected.

#### Monitor and Camera Features





IP69



-40F



176F

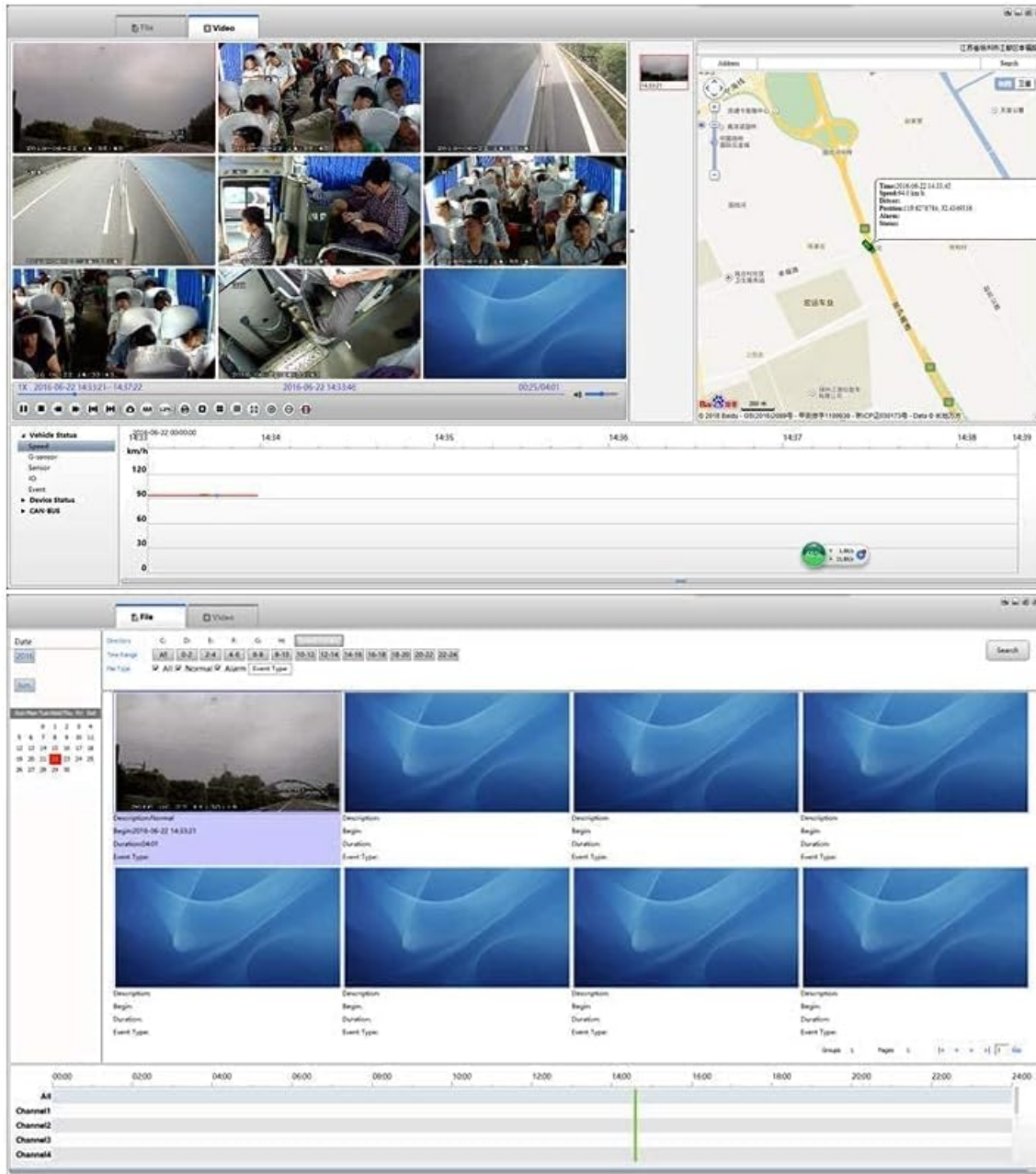
1. Full **1080P/2.0MP** AHD.
2. **2.8mm** lens, about **120°** viewing angle.
3. **IP69** waterproof, can work outside car directly..
4. Excellent low-light performance. **with IR LED.**  
Show clear B/W image in night vision.
5. Full metal material



Camera specifications including IP69 waterproof rating, temperature resistance, and 1080P resolution.

# Playback Video on PC

We provide a software on PC, it supports to palyback all the video files, and also shows the location information if the mdvr supports GPS.



The 7-inch IPS VGA monitor with 1024x600 resolution and direct power from the MDVR.

- **Monitor:** The 7-inch IPS VGA screen has a resolution of 1024\*600, providing clear video display.
- **Camera:** Real 1080p resolution cameras with 2.8mm lens and approximately 120° viewing angle. IP68 waterproof rating ensures durability in various weather conditions.
- **Mirror Image:** You can horizontally or vertically flip any channel's image via the menu settings on the monitor.

## Video Playback

The MDVR supports direct video playback on the monitor. It also includes a video searching function to easily locate files from specific periods. A free software is provided for playback of recording files on a Windows PC.

## Dimension



## Package



1 x SD 1080P 4-CH mdvr



1 x accessory



1 x 7" VGA monitor



4 x 1080P AHD Camera



1 x 16.4 ft  
2 x 32.8 ft  
1 x 49.2 ft

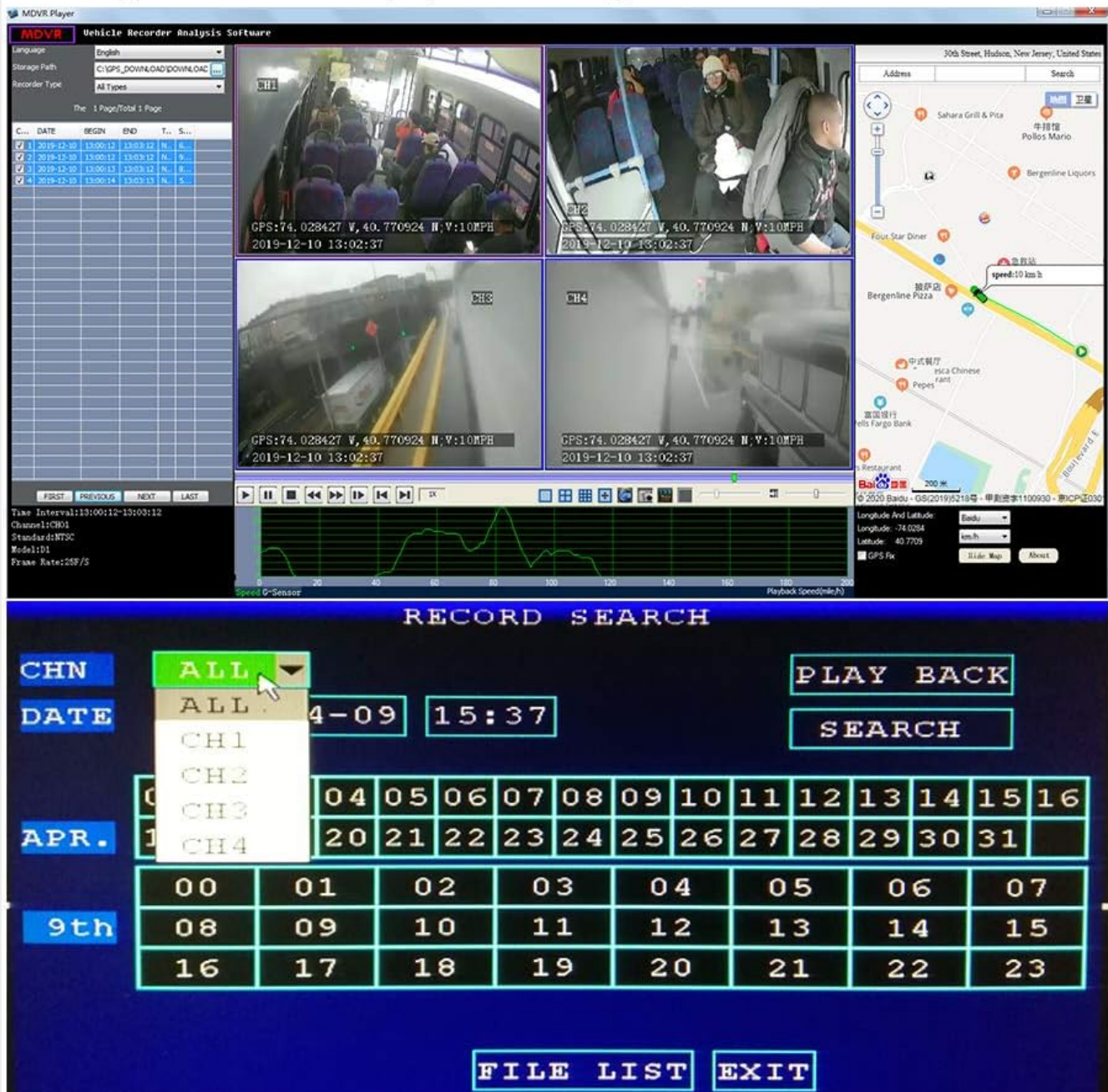
(30m/25m/20m/15m/10m/5m for selection)

PC software interface for viewing recorded video files, including location information if GPS is supported.



# Playback Video

We provide a software on PC. It supports to playback all the video files. and also shows the location information if MDVR supports GPS. It also supports to search and playback recording files on MDVR .



PC software interface for searching and playing back recording files on the MDVR.

## 4. MAINTENANCE

- **Cleaning:** Use a soft, dry cloth to clean the monitor and camera lenses. Avoid abrasive cleaners or solvents.
- **Cable Inspection:** Periodically check all cables and connectors for signs of wear or damage. Ensure connections remain secure and waterproof.
- **Firmware Updates:** Check the manufacturer's website for any available firmware updates to ensure optimal performance and new features.
- **Memory Card:** Regularly back up important footage and format the memory card periodically to maintain performance and prevent data corruption.

## 5. TROUBLESHOOTING



Problem	Possible Cause	Solution
No power to MDVR/Monitor	Loose power connection; vehicle battery low; incorrect wiring.	Check all power cables and connections. Ensure the yellow wire is connected to a constant power source. Verify vehicle battery voltage.
No video signal from camera	Loose camera cable; damaged camera; incorrect camera input selected on monitor.	Ensure camera cables are securely connected to the MDVR. Check camera for physical damage. Cycle through monitor inputs.
Poor video quality/Flickering	Dirty camera lens; poor cable connection; interference.	Clean camera lens. Re-seat cable connections. Ensure cables are not near strong electromagnetic sources.
Recording not working	Memory card full; memory card not inserted or faulty; MDVR settings incorrect.	Check memory card capacity and format if necessary. Ensure card is properly inserted. Verify recording settings in MDVR menu.
Alarm input not triggering display	Alarm wire not connected correctly; trigger signal not strong enough.	Verify alarm wire connections to the correct trigger source. Ensure the trigger signal is active.

## 6. SPECIFICATIONS

Dimensions



Package



Physical dimensions of the MDVR unit and a visual representation of package contents.

Feature	Detail
Product Dimensions	11.02 x 7.87 x 11.81 inches
Item Weight	8.78 pounds
Model Number	J12
Batteries	2 Lithium Metal batteries required (for remote control, etc.)
Manufacturer	JOINLGO
Orientation	Rear (cameras can be used for side/rear view)

Feature	Detail
Vehicle Service Type	Car
Connectivity Technology	Powerline (Wired)
Special Features	Loop Recording, Motion Sensing, Delayed Power Off, Waterproof Cameras
Video Capture Resolution	1080p (also supports 720P/960H/D1)
Color	Black
Field Of View	120 Degrees (Camera)

## 7. WARRANTY AND SUPPORT

This JOINLGO product comes with a**2-Year Warranty**. In case of a defective item, a new replacement will be provided without the need to return the defective unit. This ensures a worry-free experience for our customers.

### Quality Assurance

JOINLGO is committed to providing high-quality products. All items undergo rigorous testing, including 72-hour aging tests, high-temperature tests, and waterproof tests for cameras, to ensure reliability and durability.

Your browser does not support the video tag.

Video demonstrating JOINLGO's quality assurance process, including aging, high-temperature, and waterproof testing for their products.

### Additional Resources

For further details or a downloadable version of the manual, please refer to the official User Manual (PDF) available online: [Download User Manual \(PDF\)](#)

