



Manuals.plus /

› EAPP /

› EAPP 24380-5RB0A Fuse Link Fuse Holder Instruction Manual for Nissan Kicks and Versa

## EAPP 24380-5RB0A

# EAPP 24380-5RB0A Fuse Link Fuse Holder Instruction Manual

**Model:** 24380-5RB0A | **Brand:** EAPP

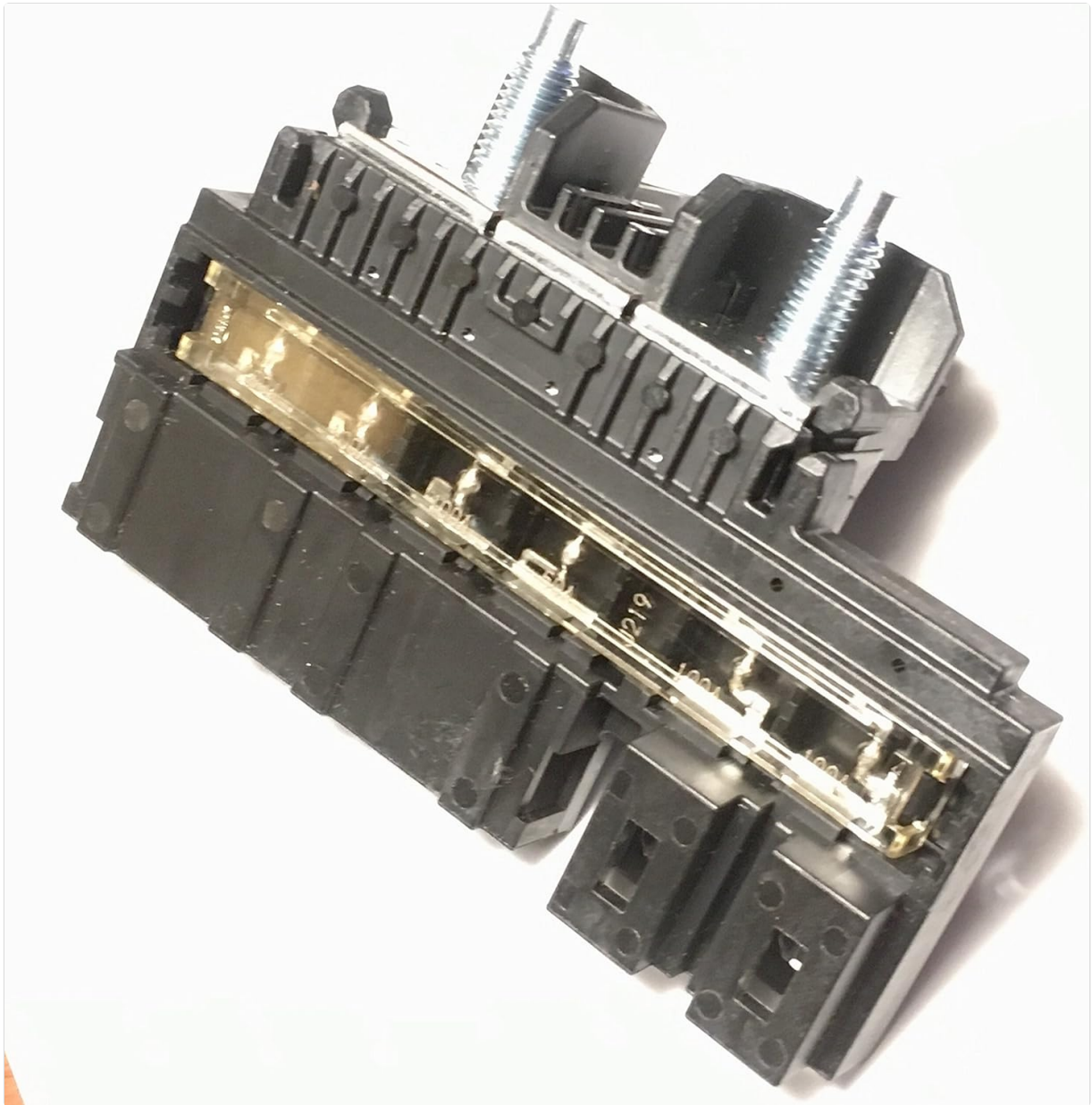
## 1. INTRODUCTION

This instruction manual provides essential information for the proper installation, operation, and maintenance of the EAPP 24380-5RB0A Fuse Link Fuse Holder. This component is designed as a direct replacement part for specific Nissan vehicle models. Please read this manual thoroughly before proceeding with installation or any related procedures.

## 2. PRODUCT OVERVIEW

The EAPP 24380-5RB0A is a multi-pole fuse link fuse holder designed to protect the electrical systems in compatible Nissan vehicles. It features an 8-pole configuration with varying current ratings to manage different circuits effectively. This unit ensures proper electrical distribution and protection against overcurrent conditions.

- **Direct Fit:** Engineered for precise compatibility with specified vehicle models.
- **Easy to Install:** Designed for straightforward replacement. Professional installation is recommended.
- **8-Pole Configuration:** Includes current ratings of 450Amp, 450Amp, 100Amp, 100Amp, 100Amp, 50Amp, 100Amp, 100Amp.



*Figure 2.1: Main view of the EAPP 24380-5RB0A Fuse Link Fuse Holder. This image shows the overall structure of the fuse link, highlighting its compact design and the visible fuse elements.*

### 3. WHAT'S IN THE BOX

---

Upon opening the package, verify that all components are present and undamaged:

- 1x EAPP 24380-5RB0A Fuselink Fuse Holder
- 3x M8 Nuts

### 4. COMPATIBILITY

---

This fuse link fuse holder is a compatible replacement for the following Nissan vehicle models:

- Nissan Kicks (Model Years: 2018-2024)
- Nissan Versa (Model Years: 2020-2025)

It is recommended to confirm vehicle fitment with a qualified technician or by cross-referencing the part number with your vehicle's specifications before installation.

## 5. SPECIFICATIONS

Attribute	Detail
Brand	EAPP
Model	Battery Fuselink
Item Model Number	24380-5RB0A
Manufacturer Part Number	EDS-2766543W
Item Weight	5.6 ounces
Package Dimensions	6 x 6 x 4 inches
Pole Configuration	8 Pole
Current Ratings	450A, 450A, 100A, 100A, 100A, 50A, 100A, 100A

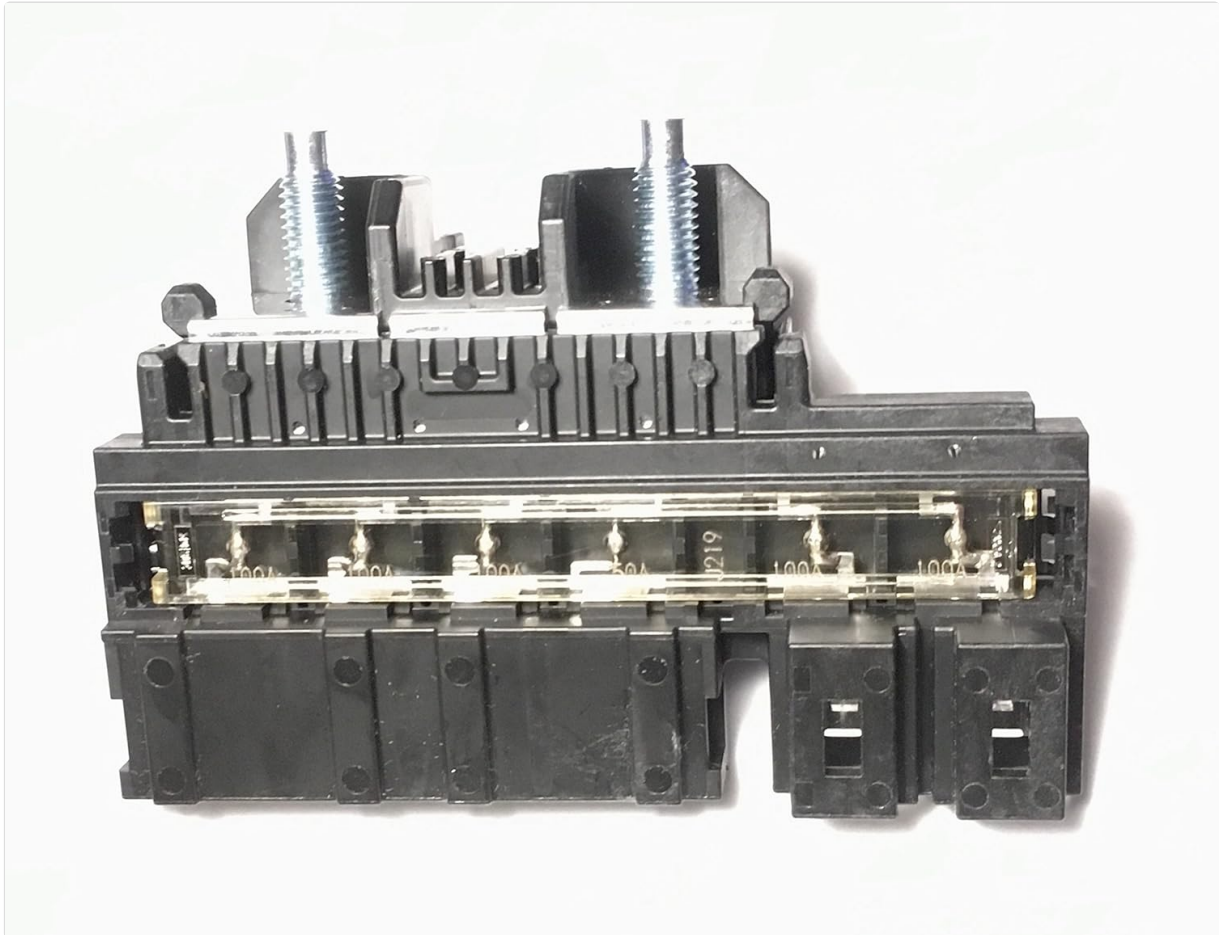
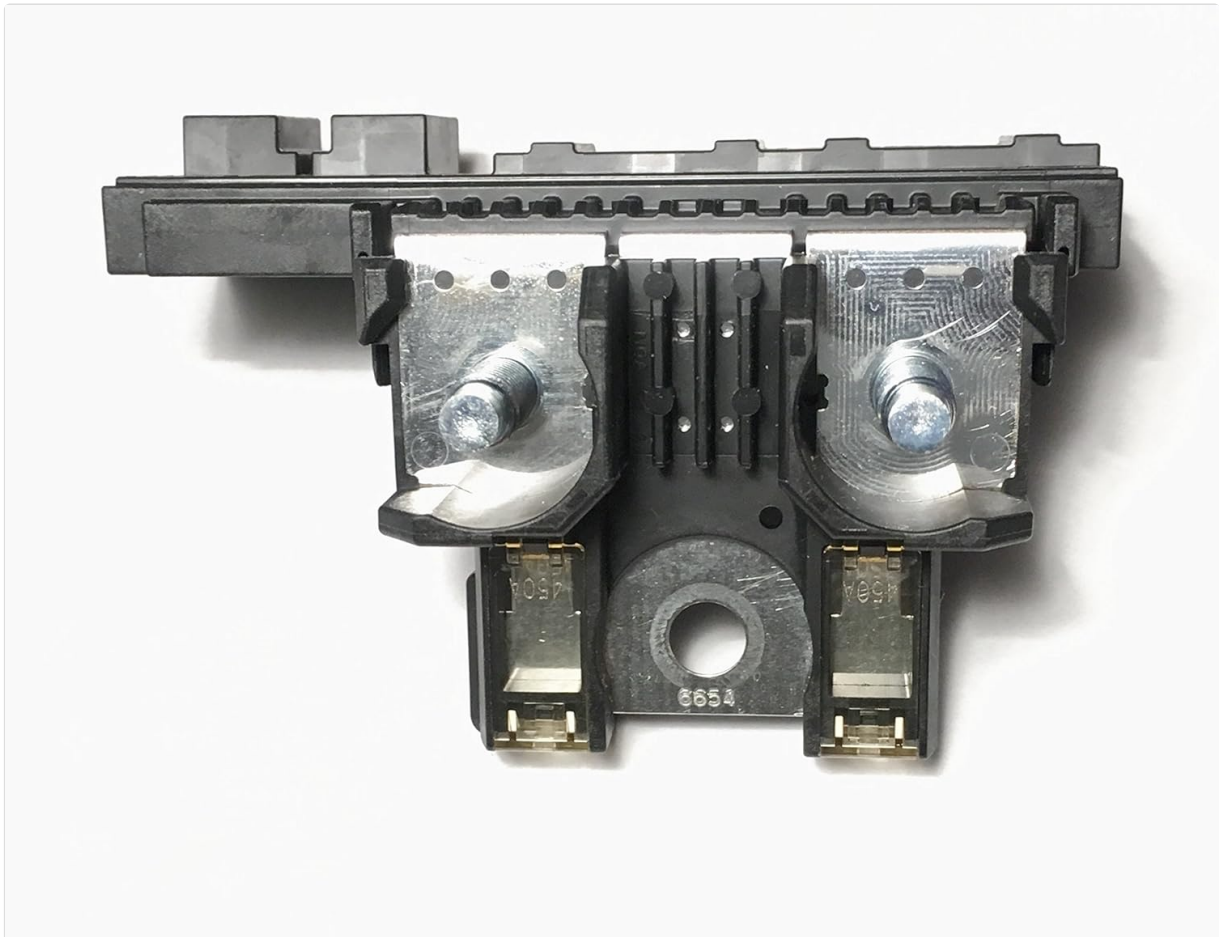


Figure 5.1: Top view of the fuse link, showing the individual fuse elements and their respective current ratings. This perspective helps in identifying the specific fuse values.

## 6. INSTALLATION INSTRUCTIONS

**Warning: Electrical work can be dangerous. Improper installation may lead to vehicle damage, electrical system failure, or personal injury. It is highly recommended that installation be performed by a qualified automotive technician.**

1. **Safety First:** Before beginning any work, ensure the vehicle's battery is disconnected to prevent electrical shorts or accidental activation of electrical components.
2. **Locate Existing Fuse Link:** Identify the location of the existing fuse link fuse holder in your vehicle. This is typically found near the battery or in the main fuse box.
3. **Disconnect Wiring:** Carefully disconnect all wiring harnesses and battery cables attached to the old fuse link. Note the position and orientation of each connection for correct reinstallation.
4. **Remove Old Unit:** Unmount and remove the old fuse link fuse holder from its position.
5. **Install New Unit:** Position the EAPP 24380-5RB0A Fuse Link Fuse Holder in the designated mounting location. Secure it firmly.
6. **Connect Wiring:** Reconnect all wiring harnesses and battery cables to the new fuse link, ensuring each connection is secure and correctly oriented. Use the provided M8 nuts where applicable to secure connections.
7. **Reconnect Battery:** Once all connections are verified, reconnect the vehicle's battery.
8. **Test System:** Start the vehicle and test all electrical systems to ensure proper functionality. Check for any warning lights or unusual behavior.



*Figure 6.1: Underside view of the fuse link, showing the main connection points and mounting hardware. This view is crucial for understanding how the unit connects to the vehicle's electrical system.*

## 7. OPERATING INSTRUCTIONS

The EAPP 24380-5RB0A Fuse Link Fuse Holder operates automatically once correctly installed. Its primary function is to protect the vehicle's electrical circuits by interrupting current flow if an overload or short circuit occurs. No user intervention is required for its operation under normal conditions.

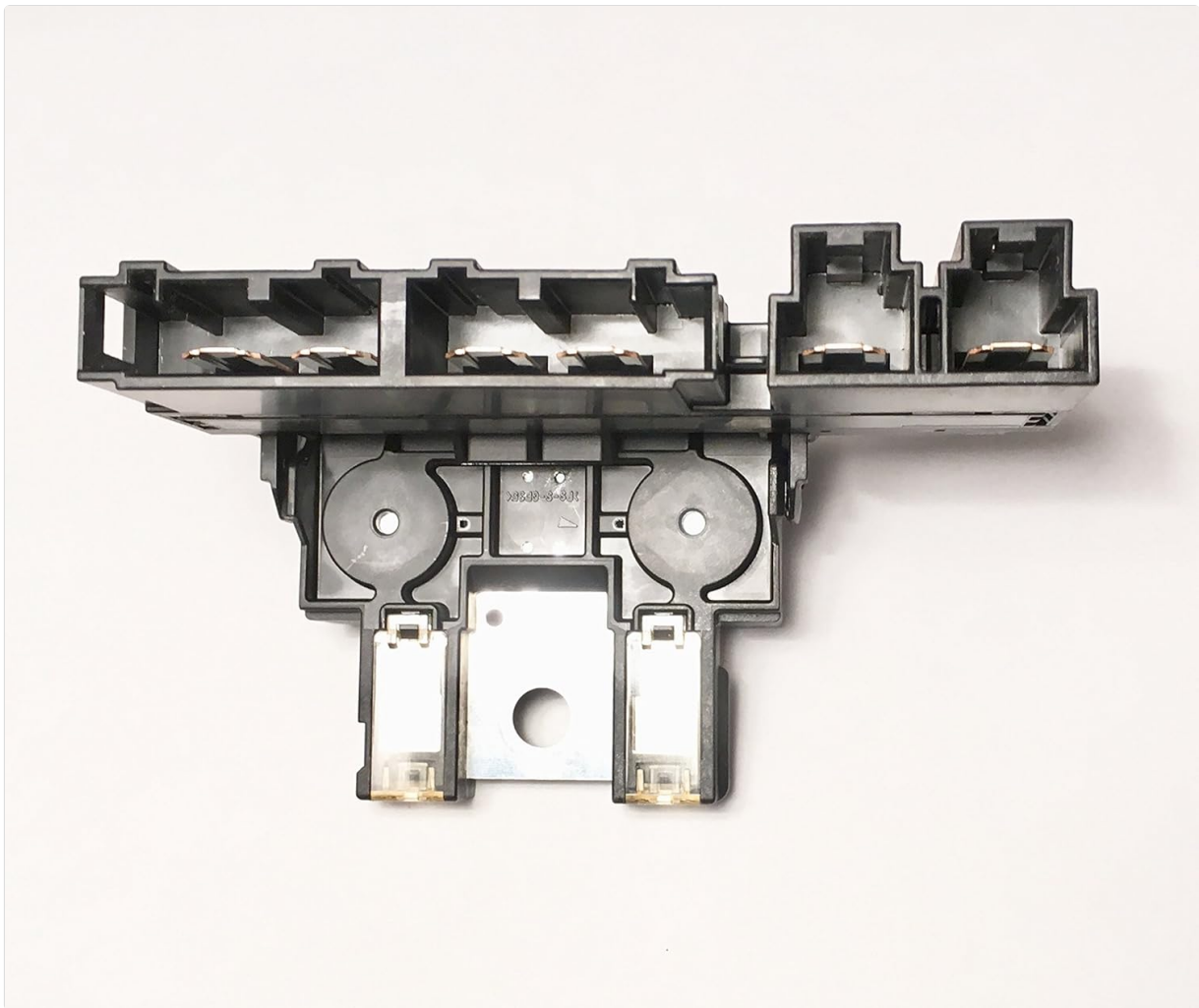


Figure 7.1: Side view of the fuse link, illustrating its profile and the arrangement of internal components. This angle provides insight into the physical dimensions and construction.

## 8. MAINTENANCE

---

The fuse link fuse holder is generally a maintenance-free component. However, periodic inspection is recommended:

- **Visual Inspection:** Annually, or during routine vehicle maintenance, visually inspect the fuse link and its connections for any signs of corrosion, loose wiring, or physical damage.
- **Cleaning:** If dust or debris accumulates, gently clean the exterior with a dry, soft cloth. Avoid using liquid cleaners directly on electrical components.
- **Replacement:** If any fuse element within the holder appears blown (broken filament) or if the unit shows signs of damage, it must be replaced as a complete unit. Do not attempt to repair individual fuse elements.

## 9. TROUBLESHOOTING

---

If you experience electrical issues after installation or suspect a problem with the fuse link:

- **No Power to Specific Circuits:** If certain electrical components (e.g., headlights, radio) are not functioning, visually inspect the corresponding fuse element within the fuse link for a break in the filament.
- **Vehicle Not Starting / No Power:** If the entire vehicle electrical system is dead, check the main high-amperage fuse elements within the fuse link.

- **Loose Connections:** Ensure all connections to the fuse link are tight and free from corrosion. Loose connections can cause intermittent power loss or overheating.
- **Professional Diagnosis:** If the issue persists after basic checks, consult a qualified automotive technician for diagnosis and repair.

## 10. WARRANTY AND SUPPORT

---

For information regarding product warranty, returns, or technical support, please refer to the seller's policies or contact EAPP customer service. When contacting support, please have your product model number (24380-5RB0A) and purchase details available.

## 11. IMPORTANT SAFETY INFORMATION

---

- Always disconnect the vehicle's battery before working on any electrical components.
- Wear appropriate personal protective equipment, including safety glasses and gloves.
- Do not attempt to bypass or modify the fuse link. This can lead to severe electrical damage or fire.
- Ensure replacement parts are compatible with your vehicle's specifications.
- Keep children and pets away from the work area.