



[Manuals.plus](#) /

> [Medistrom](#) /

> Medistrom Car Charger for Pilot-12 Lite, Pilot-24 Lite and Pilot Flex - Instruction Manual

Medistrom P99ACCPCC

Medistrom Car Charger Instruction Manual

Model: P99ACCPCC

INTRODUCTION

This instruction manual provides essential information for the safe and effective use of your Medistrom Car Charger. This adapter is designed to provide reliable power to your Medistrom Pilot-12 Lite, Pilot-24 Lite, and Pilot Flex CPAP batteries directly from a vehicle's cigarette lighter outlet. Please read this manual thoroughly before use.



Figure 1: Medistrom Car Charger Cable. This image displays the car charger cable, featuring a cigarette lighter plug on one end and a DC output connector on the other, designed for charging Medistrom CPAP batteries.

COMPATIBILITY

The Medistrom Car Charger is specifically designed for use with the following Medistrom CPAP battery models:

- Medistrom Pilot-12 Lite
- Medistrom Pilot-24 Lite
- Medistrom Pilot Flex (Charcoal and Navy models)

This charger is compatible with standard 12V vehicle cigarette lighter outlets found in sedans, SUVs, caravans, and other vehicles.

Compatible with

Pilot 12-Lite, Pilot 24-Lite and Pilot Flex



Pilot-12 Lite



Pilot Flex Charcoal



Pilot-24 Lite



Pilot Flex Navy



Figure 2: Compatibility overview. This image illustrates the car charger alongside various Medistrom Pilot battery models (Pilot-12 Lite, Pilot-24 Lite, Pilot Flex Charcoal, Pilot Flex Navy), demonstrating its broad compatibility.

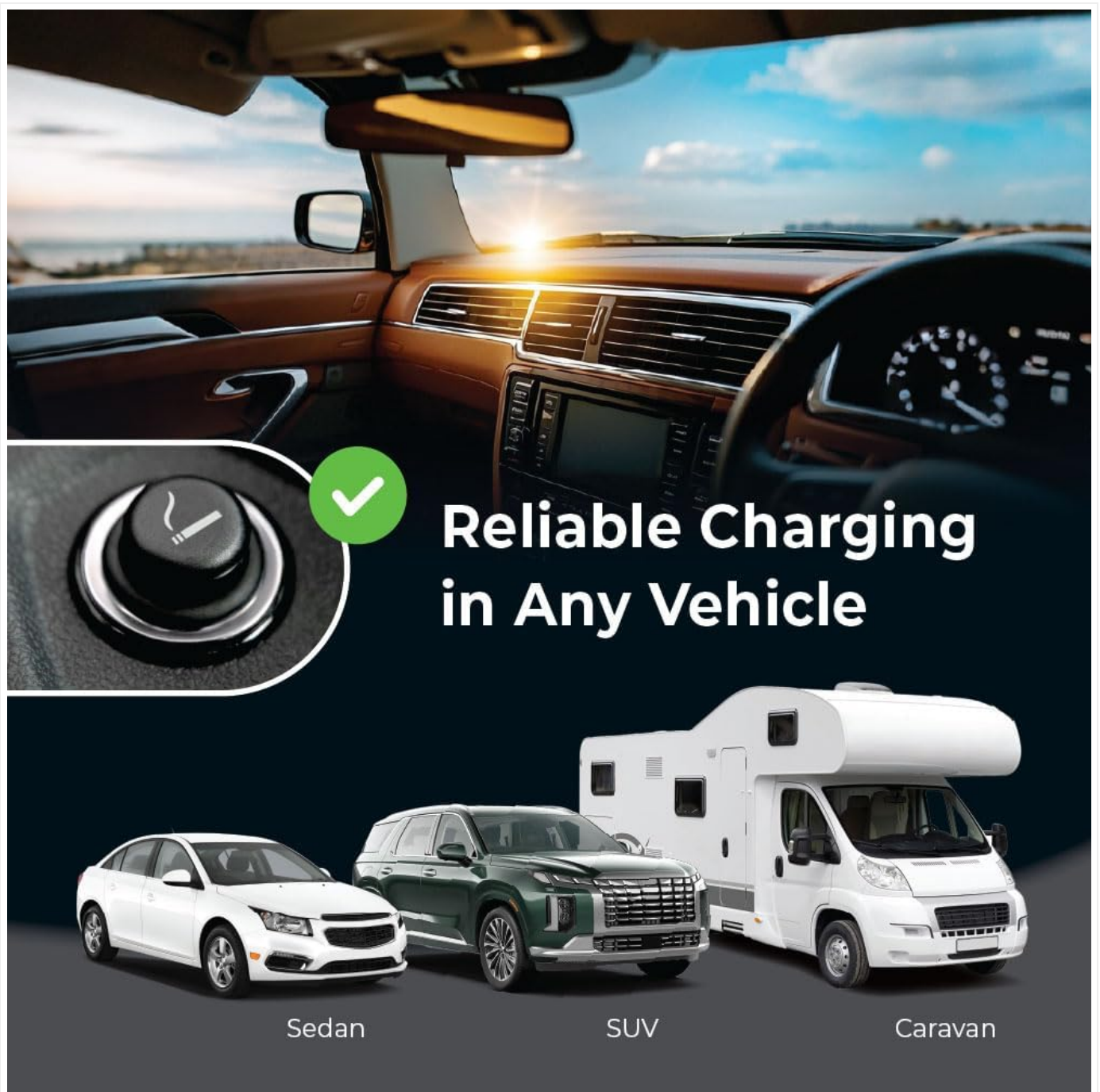


Figure 3: Vehicle compatibility. This image shows the car charger being used in a vehicle, with illustrations of a sedan, SUV, and caravan, indicating its suitability for various vehicle types.

SETUP AND CONNECTION

1. Ensure your vehicle's engine is running or the ignition is in the accessory position to provide power to the cigarette lighter outlet.
2. Locate the cigarette lighter or 12V accessory outlet in your vehicle.
3. Insert the cigarette lighter plug end of the Medistrom Car Charger firmly into the vehicle's 12V outlet. The indicator light on the charger should illuminate, confirming power connection.
4. Connect the DC output connector of the car charger into the designated charging port on your Medistrom Pilot battery. Ensure the connection is secure.

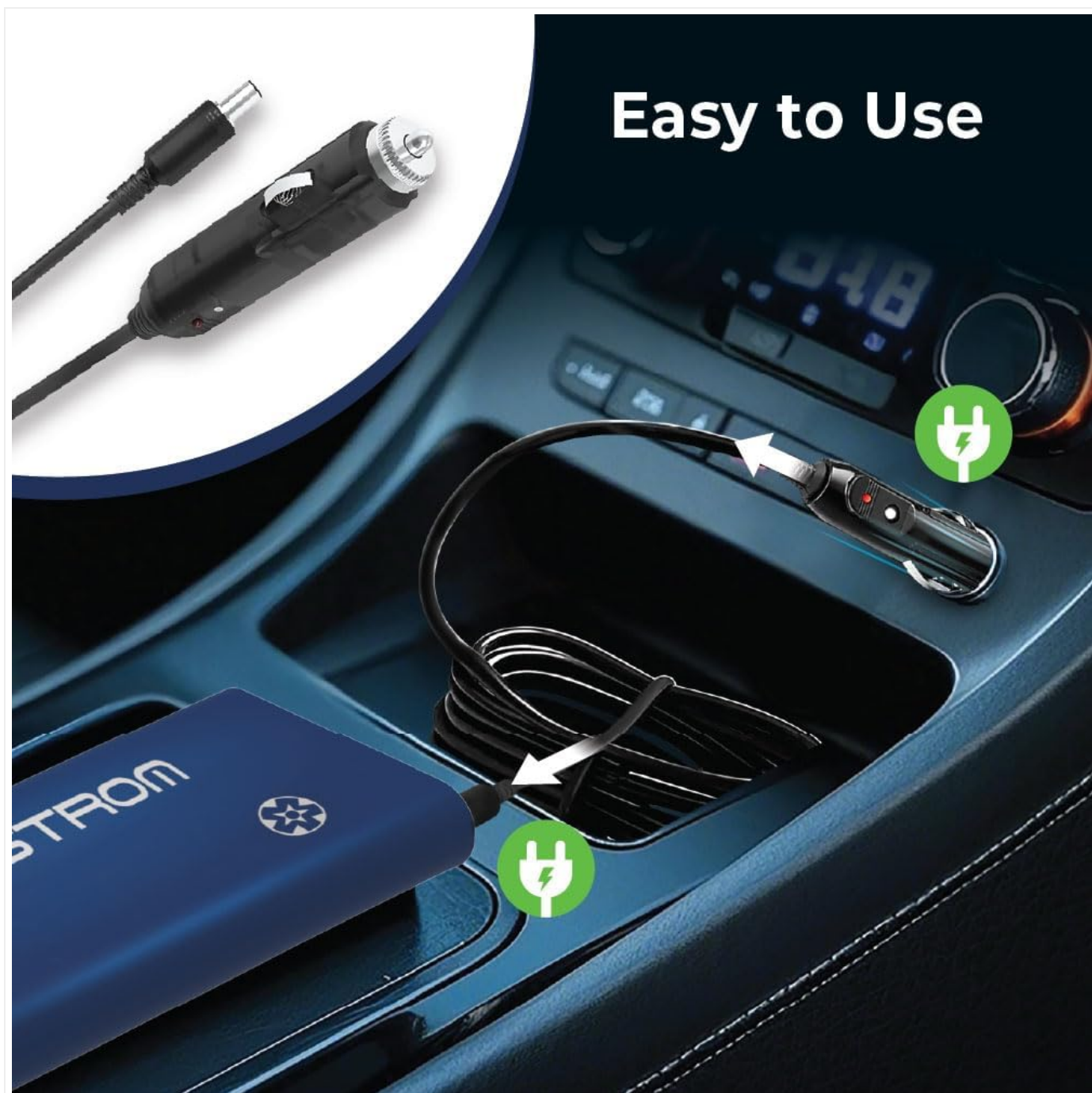


Figure 4: Connection process. This image demonstrates the ease of connecting the car charger: inserting the cigarette lighter plug into the vehicle's outlet and the DC connector into the Medistrom battery.

OPERATING INSTRUCTIONS

Once connected, the Medistrom Car Charger will begin charging your Pilot battery. The charging time typically ranges from 3 to 5 hours for a full charge, depending on the vehicle's battery condition and the specific Pilot model.

- Monitor the charging indicator lights on your Medistrom Pilot battery to track the charging progress.
- For optimal charging, ensure the vehicle's engine is running, especially during longer charging sessions, to prevent draining the vehicle's battery.
- The charger is designed for continuous use during travel, providing a reliable power source for your CPAP battery on the go.

100%
in 3-5 hours

Charge times may vary based on vehicle make, model and vehicle battery condition

No More Power Worries During Road Trips

Charge Your CPAP Battery Anytime!

Figure 5: Charging efficiency. This image highlights that the battery can reach 100% charge in 3-5 hours when connected via the car charger, emphasizing the convenience for road trips.

Enjoy Your Trip Without the Power Worry

Charge Your CPAP Batteries on the Go!



Figure 6: In-car charging scenario. This image shows a Medistrom battery being charged by the car charger inside a vehicle, illustrating how users can maintain power for their CPAP devices during travel.

CARE AND MAINTENANCE

- Keep the charger clean and free from dust and debris. Use a soft, dry cloth for cleaning.
- Avoid exposing the charger to extreme temperatures, direct sunlight, or moisture.
- Do not attempt to disassemble or repair the charger. Refer to qualified service personnel for any issues.
- Store the charger in a cool, dry place when not in use.

TROUBLESHOOTING

Problem	Possible Cause	Solution
---------	----------------	----------

Problem	Possible Cause	Solution
Charger indicator light not on.	No power from vehicle outlet; loose connection; blown fuse in vehicle.	Ensure vehicle ignition is on. Check connection firmness. Inspect vehicle's cigarette lighter fuse. Try another 12V outlet if available.
Battery not charging or charging slowly.	Vehicle engine off; low vehicle battery voltage; incorrect battery connection.	Start vehicle engine. Ensure secure connection to Pilot battery. Verify Pilot battery is compatible with the charger.
Charger feels hot during use.	Normal operation; poor ventilation.	A slight warmth is normal. Ensure charger is not covered and has adequate ventilation. If excessively hot, disconnect immediately and contact support.

SPECIFICATIONS

Feature	Detail
Model Number	P99ACCPCC
Input Voltage	12V DC (from vehicle cigarette lighter)
Output Wattage	36 watts
Dimensions (L x W x H)	4.5 x 2.65 x 1.9 inches
Weight	3.26 ounces (approx. 92.4 grams)
Manufacturer	Choice One Medical
First Available Date	June 1, 2018

WARRANTY AND SUPPORT

Medistrom products are manufactured to high standards. For information regarding warranty coverage and customer support, please refer to the documentation included with your Medistrom Pilot battery or visit the official Medistrom website. The product typically comes with a 1-year warranty.

For further assistance, you may contact Medistrom customer service through their official channels. Please have your product model number (P99ACCPCC) and purchase details ready when contacting support.

Manufacturer: Choice One Medical

Brand: Medistrom

Official Medistrom Store: [Visit Store](#)

